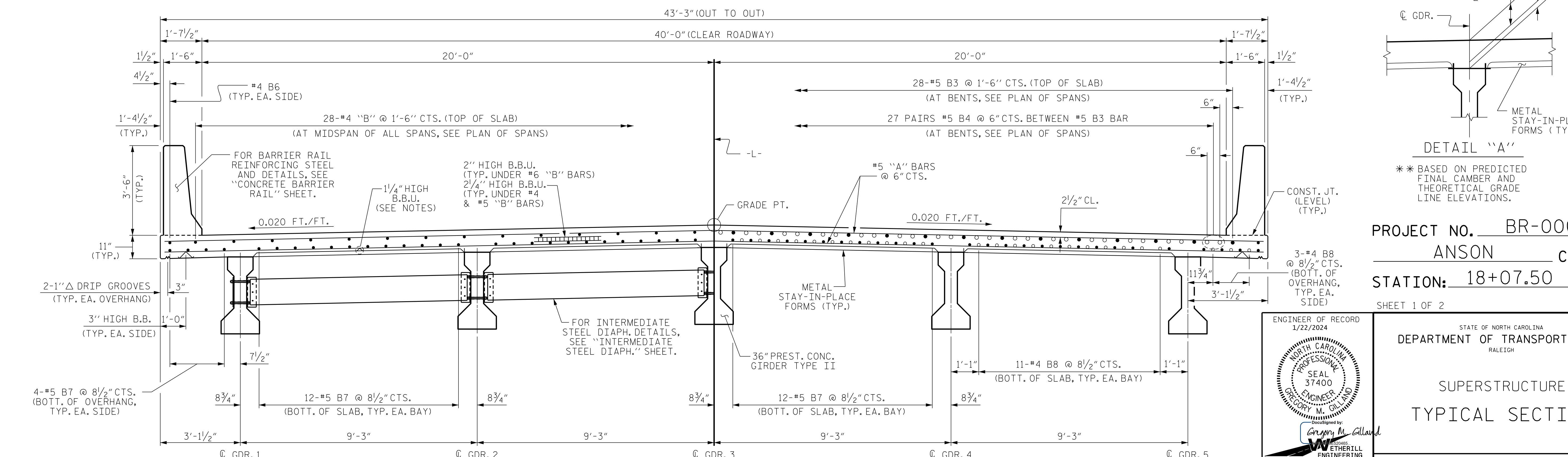


TYPICAL SECTION AT INTEGRAL END BENT



TYPICAL HALF SECTION

TYPICAL HALF SECTION

(SHOWING INTERMEDIATE STEEL DIAPHRAGM)

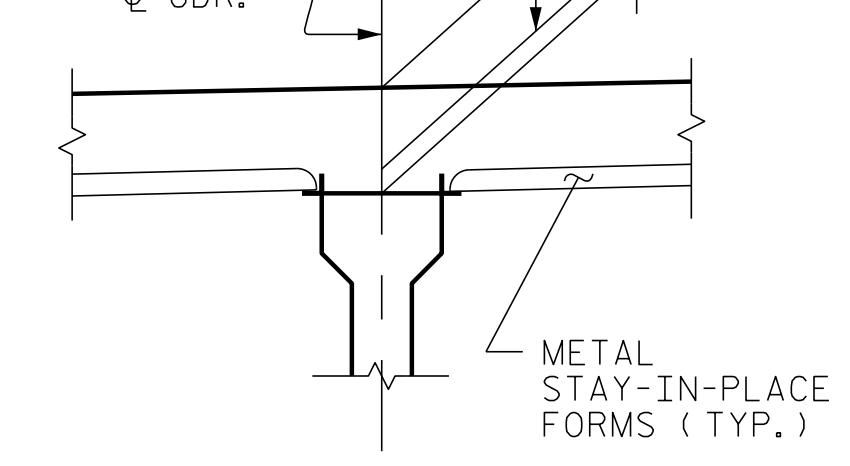
(THRU LINK SLAB @ INTERIOR BENT)

NOTE * THESE BARS ARE TO MATCH #4 "V" BARS IN END BENT

10 3/4" TOP OF SLAB TO TOP OF PREST. CONC. GDR. AT C BRG.

2" BUILD-UP AT C BRG. ** 1 3/4" MAX. @ MID-SPAN (SPAN A & C, INTERIOR GDR.'S) 1 1/8" MAX. @ MID-SPAN (SPAN B, INTERIOR GDR.'S)

8 3/4" TOP OF SLAB TO TOP OF S.I.P. FORMS @ C BRG.



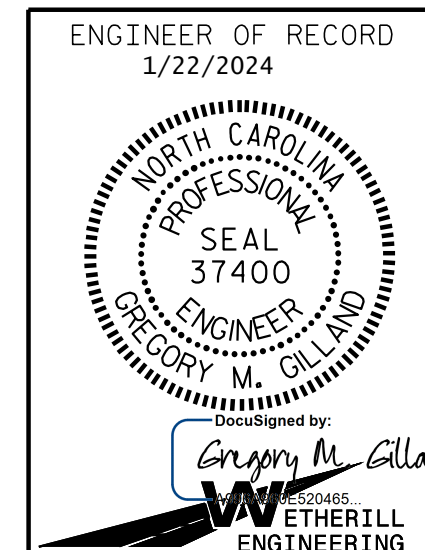
DETAIL "A" ** BASED ON PREDICTED FINAL CAMBER AND THEORETICAL GRADE LINE ELEVATIONS.

PROJECT NO. BR-0062

ANSON COUNTY

STATION: 18+07.50 -L-

SHEET 1 OF 2



STATE OF NORTH CAROLINA DEPARTMENT OF TRANSPORTATION RALEIGH					
SUPERSTRUCTURE TYPICAL SECTION					
REVISIONS					
NO.	BY:	DATE:	NO.	BY:	DATE:
1			3		
2			4		

1223 Jones Franklin Rd.
Raleigh, N.C. 27606
Bus: 919 851 8077
Fax: 919 851 8107
LICENSE NO. F-0377

DOCUMENT NOT CONSIDERED FINAL UNLESS ALL SIGNATURES COMPLETED

P:\2020\20130.01_BR-0062\Structures\DWG\BR-0062-SD_TS_0300 14.dgn
1/19/2024 8:42:12 AM

DRAWN BY: D. HODGE DATE: 4/23
CHECKED BY: G. GILLAND DATE: 5/23

SHEET NO. S-06
TOTAL SHEETS 35