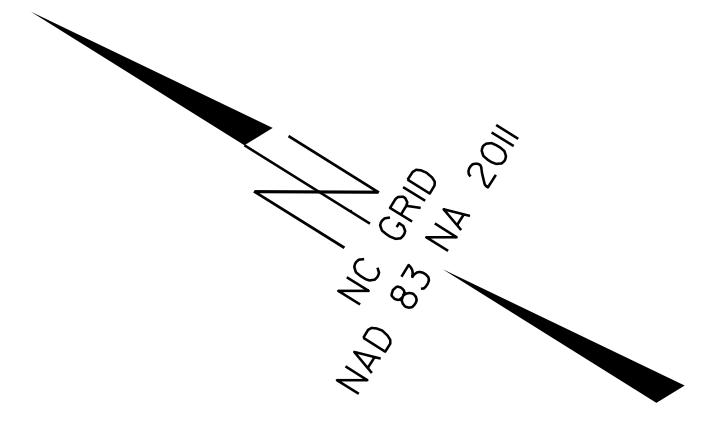
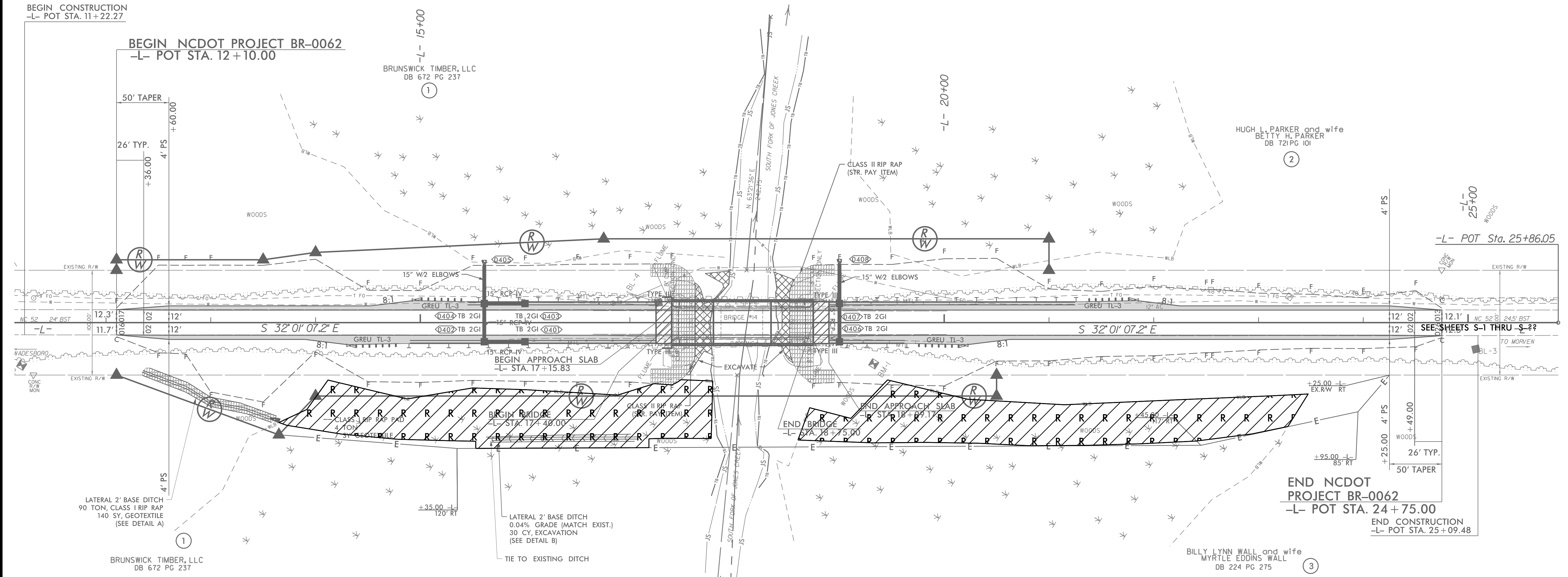


PROJECT REFERENCE NO.	SHEET NO.
BR-0062	RF-2
RW SHEET NO.	HYDRAULICS ENGINEER
ROADWAY DESIGN ENGINEER	

 REFORESTATION



REVISIONS



BEGIN CONSTRUCTION  
-L- POT STA. 11+22.27

BEGIN NCDOT PROJECT BR-0062  
-L- POT STA. 12+10.00

BRUNSWICK TIMBER, LLC  
DB 672 PG 237

HUGH L. PARKER and wife  
BETTY H. PARKER  
DB 721 PG 101

LATERAL 2' BASE DITCH  
90 TON, CLASS I RIP RAP  
140 SY, GEOTEXTILE  
(SEE DETAIL A)

LATERAL 2' BASE DITCH  
0.04% GRADE (MATCH EXIST.)  
30 CY, EXCAVATION  
(SEE DETAIL B)

END NCDOT PROJECT BR-0062  
-L- POT STA. 24+75.00  
END CONSTRUCTION  
-L- POT STA. 25+09.48

BILLY LYNN WALL and wife  
MYRTLE EDDINS WALL  
DB 224 PG 275

8/17/99

3/18/2024  
L:\SH\20130.01\_07\_RF-2\_psh.dgn  
L:\SH\20130.01\_07\_RF-2\_psh.dgn