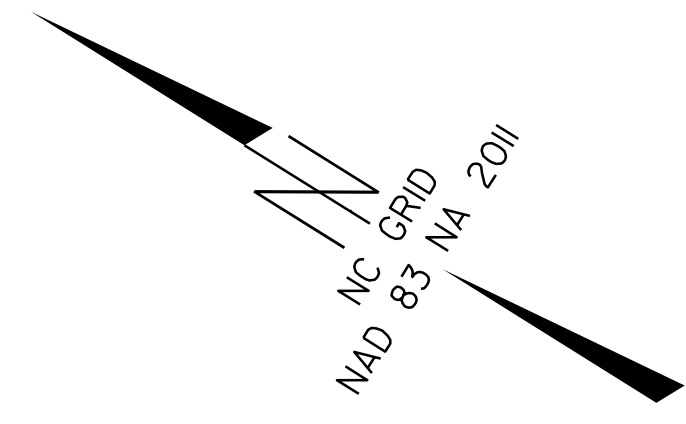
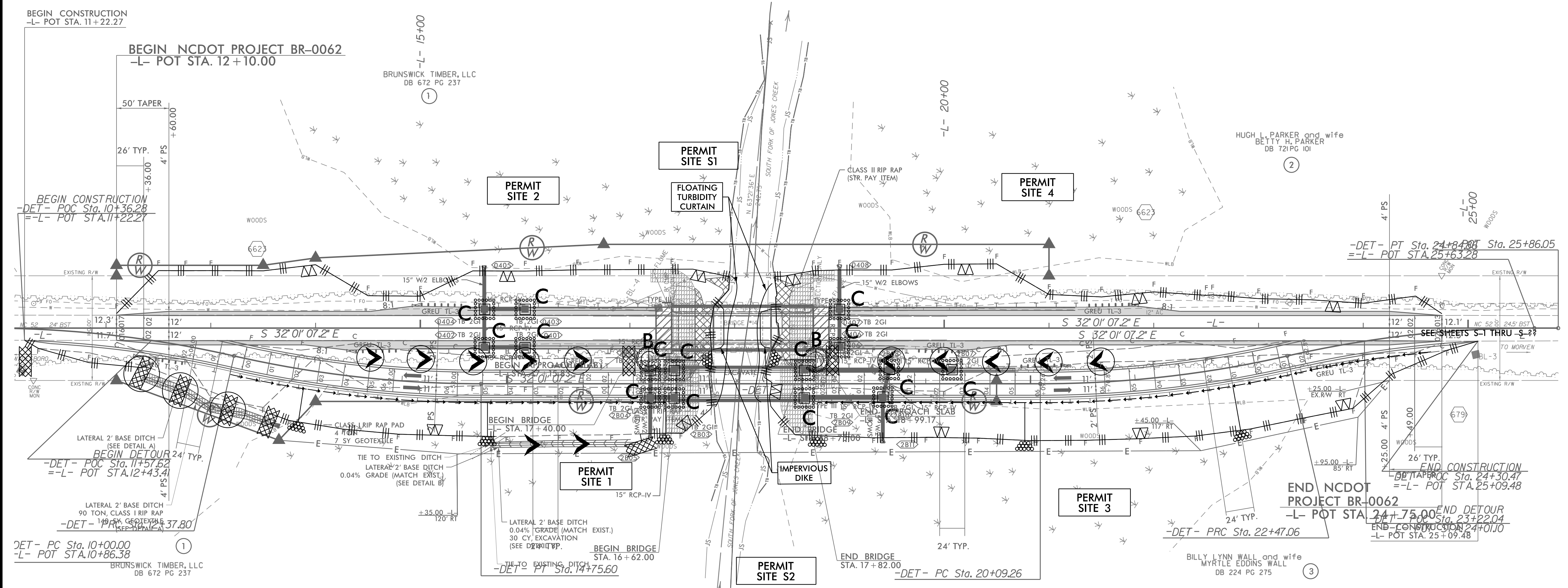


PROJECT REFERENCE NO.	SHEET NO.
BR-0062	EC-5/ CONSTR.4
RW SHEET NO.	
ROADWAY DESIGN ENGINEER	HYDRAULICS ENGINEER



REVISIONS



BEGIN CONSTRUCTION  
-L- POT STA. 11+22.27

BEGIN NCDOT PROJECT BR-0062  
-L- POT STA. 12+10.00

BEGIN CONSTRUCTION  
-DET- POC Sta. 10+36.28  
-L- POT STA. 11+22.27

BEGIN DETOUR 24' TYP.  
-DET- POC Sta. 11+57.62  
-L- POT STA. 12+43.4

LATERAL 2' BASE DITCH  
90 TON, CLASS 1 RIP RAP  
-DET- POC Sta. 13+37.80  
-L- POT STA. 14+00.00

DET- PC Sta. 10+00.00  
-L- POT STA. 10+86.38

BEGIN BRIDGE  
STA. 16+62.00  
-DET- PT Sta. 14+75.60

END BRIDGE  
STA. 17+82.00  
-DET- PC Sta. 20+09.26

-DET- PRC Sta. 22+47.06

END NCDOT PROJECT BR-0062  
-L- POT STA. 24+75.00

END DETOUR  
-DET- POC Sta. 23+22.04  
-L- POT STA. 25+09.48

-DET- PT Sta. 24+84.88  
-L- POT STA. 25+63.28