

8/17/99

3/20/2024
11:58:00
DET_PSH_2B-1.dgn

REVISIONS

BRUNSWICK TIMBER, LLC
DB 672 PG 237

BRUNSWICK TIMBER, LLC
DB 672 PG 237

BRUNSWICK TIMBER, LLC
DB 672 PG 237

BRUNSWICK TIMBER, LLC
DB 672 PG 237

BRUNSWICK TIMBER, LLC
DB 672 PG 237

BRUNSWICK TIMBER, LLC
DB 672 PG 237

BRUNSWICK TIMBER, LLC
DB 672 PG 237

BRUNSWICK TIMBER, LLC
DB 672 PG 237

BRUNSWICK TIMBER, LLC
DB 672 PG 237

BRUNSWICK TIMBER, LLC
DB 672 PG 237

BRUNSWICK TIMBER, LLC
DB 672 PG 237

BRUNSWICK TIMBER, LLC
DB 672 PG 237

BRUNSWICK TIMBER, LLC
DB 672 PG 237

BRUNSWICK TIMBER, LLC
DB 672 PG 237

BRUNSWICK TIMBER, LLC
DB 672 PG 237

BRUNSWICK TIMBER, LLC
DB 672 PG 237

BRUNSWICK TIMBER, LLC
DB 672 PG 237

BRUNSWICK TIMBER, LLC
DB 672 PG 237

BRUNSWICK TIMBER, LLC
DB 672 PG 237

BRUNSWICK TIMBER, LLC
DB 672 PG 237

BRUNSWICK TIMBER, LLC
DB 672 PG 237

BRUNSWICK TIMBER, LLC
DB 672 PG 237

BRUNSWICK TIMBER, LLC
DB 672 PG 237

BRUNSWICK TIMBER, LLC
DB 672 PG 237

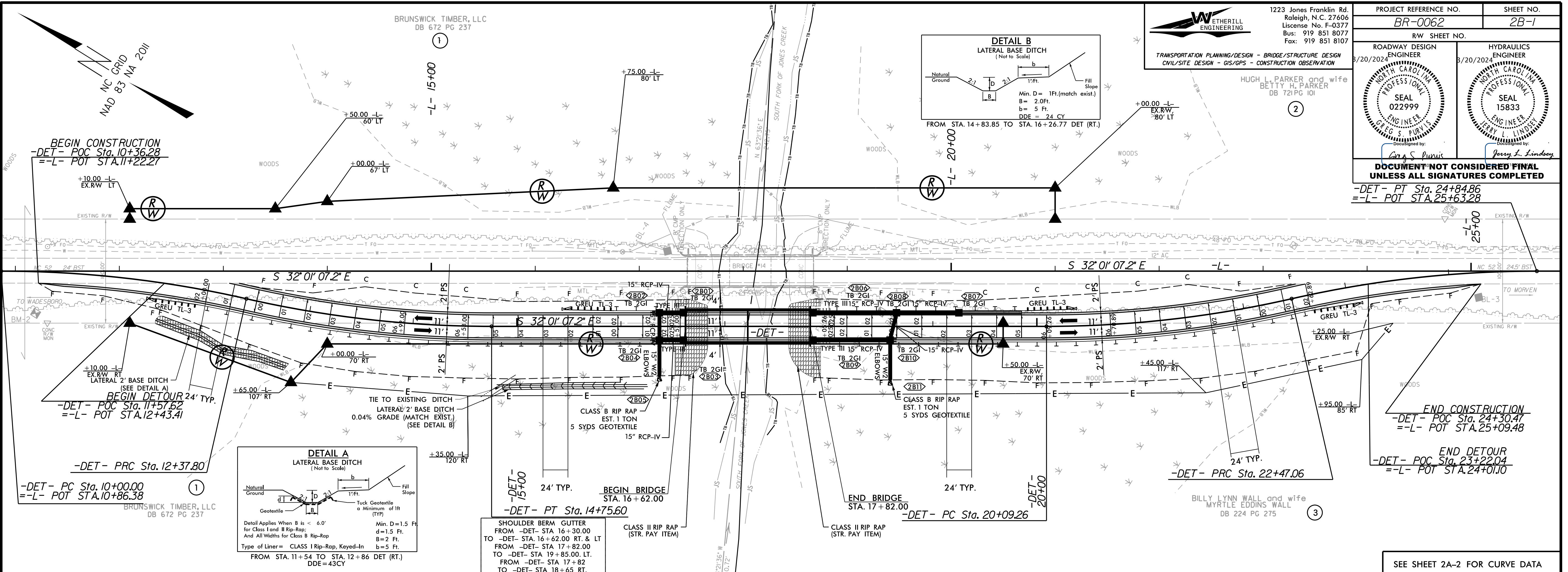
BRUNSWICK TIMBER, LLC
DB 672 PG 237

BRUNSWICK TIMBER, LLC
DB 672 PG 237

BRUNSWICK TIMBER, LLC
DB 672 PG 237

BRUNSWICK TIMBER, LLC
DB 672 PG 237

BRUNSWICK TIMBER, LLC
DB 672 PG 237



ETHERILL ENGINEERING
1223 Jones Franklin Rd.
Raleigh, N.C. 27606
License No. F-0377
Bus: 919 851 8077
Fax: 919 851 8107

TRANSPORTATION PLANNING/DESIGN - BRIDGE/STRUCTURE DESIGN
CIVIL/SITE DESIGN - GIS/GPS - CONSTRUCTION OBSERVATION

HUGH L. PARKER and wife
BETTY H. PARKER
DB 721 PG 101

3/20/2024
3/20/2024

ROADWAY DESIGN ENGINEER
SEAL 022999
G.E.G. & P.V.V.
G.E.G. & P.V.V.

HYDRAULICS ENGINEER
SEAL 15833
TERRY L. LINDSEY
TERRY L. LINDSEY

PROJECT REFERENCE NO. BR-0062
SHEET NO. 2B-1
RW SHEET NO.

DOCUMENT NOT CONSIDERED FINAL UNLESS ALL SIGNATURES COMPLETED
-DET- PT Sta. 24+84.86
=-L- POT STA. 25+63.28

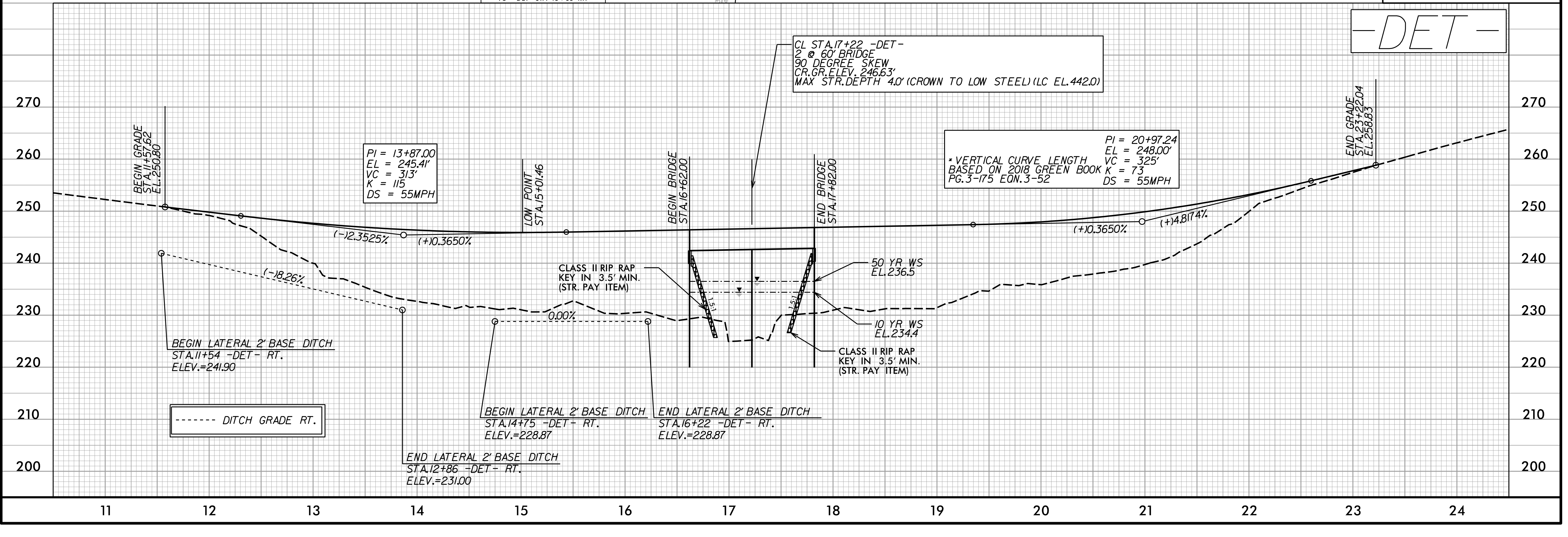
SEE SHEET 2A-2 FOR CURVE DATA

CL STA. 17+22 -DET- 2 @ 60' BRIDGE 90 DEGREE SKEW CR. GR. ELEV. 246.63' MAX STR. DEPTH 4.0' (CROWN TO LOW STEEL) (LC EL. 442.0)	PI = 13+87.00 EL = 245.41' VC = 313' K = 115 DS = 55MPH	PI = 20+97.24 EL = 248.00' VC = 325' K = 73 DS = 55MPH
---	---	--

Vertical Curve Data:
* VERTICAL CURVE LENGTH VC = 325'
BASED ON 2018 GREEN BOOK K = 73
PG. 3-175 EQN. 3-52

GRADES:
(-)12.3525%
(+)10.3650%
(-)18.26%
0.00%
(+)10.3650%
(+)4.8174%

Other Labels:
BEGIN LATERAL 2' BASE DITCH STA. 11+54 -DET- RT. ELEV.=241.90
END LATERAL 2' BASE DITCH STA. 12+86 -DET- RT. ELEV.=231.00
BEGIN BRIDGE STA. 16+62.00
END BRIDGE STA. 17+82.00
CLASS II RIP RAP KEY IN 3.5' MIN. (STR. PAY ITEM)
50 YR WS EL. 236.5
10 YR WS EL. 234.4
CLASS II RIP RAP KEY IN 3.5' MIN. (STR. PAY ITEM)



3/20/2024
11:58:00
DET_PSH_2B-1.dgn