

NOTES

FOR BRIDGE APPROACH FILL, SEE ROADWAY PLANS.
 APPROACH SLAB SHALL NOT BE CONSTRUCTED PRIOR TO COMPLETION OF THE BRIDGE DECK.
 AREA BETWEEN THE WINGWALL AND APPROACH SLAB SHALL BE GRADED TO DRAIN THE WATER AWAY FROM THE FILL FACE OF THE BRIDGE AND SHALL BE PAVED. SEE ROADWAY PLANS.
 THE JOINT OPENING AT THE APPROACH SLAB/DECK INTERFACE SHALL BE SAWS NO MORE THAN 12 HOURS AFTER THE APPROACH SLAB IS CAST. THE JOINT SHALL BE CLEANED OF ALL DEBRIS BEFORE THE SEALANT IS APPLIED. THE JOINT SEALER MATERIAL SHALL CONFORM TO THE REQUIREMENTS OF SECTION 1028-3 OF THE STANDARD SPECIFICATIONS.
 AT THE CONTRACTORS OPTION "TYPE 1A - ALTERNATE APPROACH FILL" (ROADWAY STD. 423.02) MAY BE CONSTRUCTED AT NO ADDITIONAL COST TO THE DEPARTMENT IN LIEU OF "TYPE 1 - APPROACH FILL".

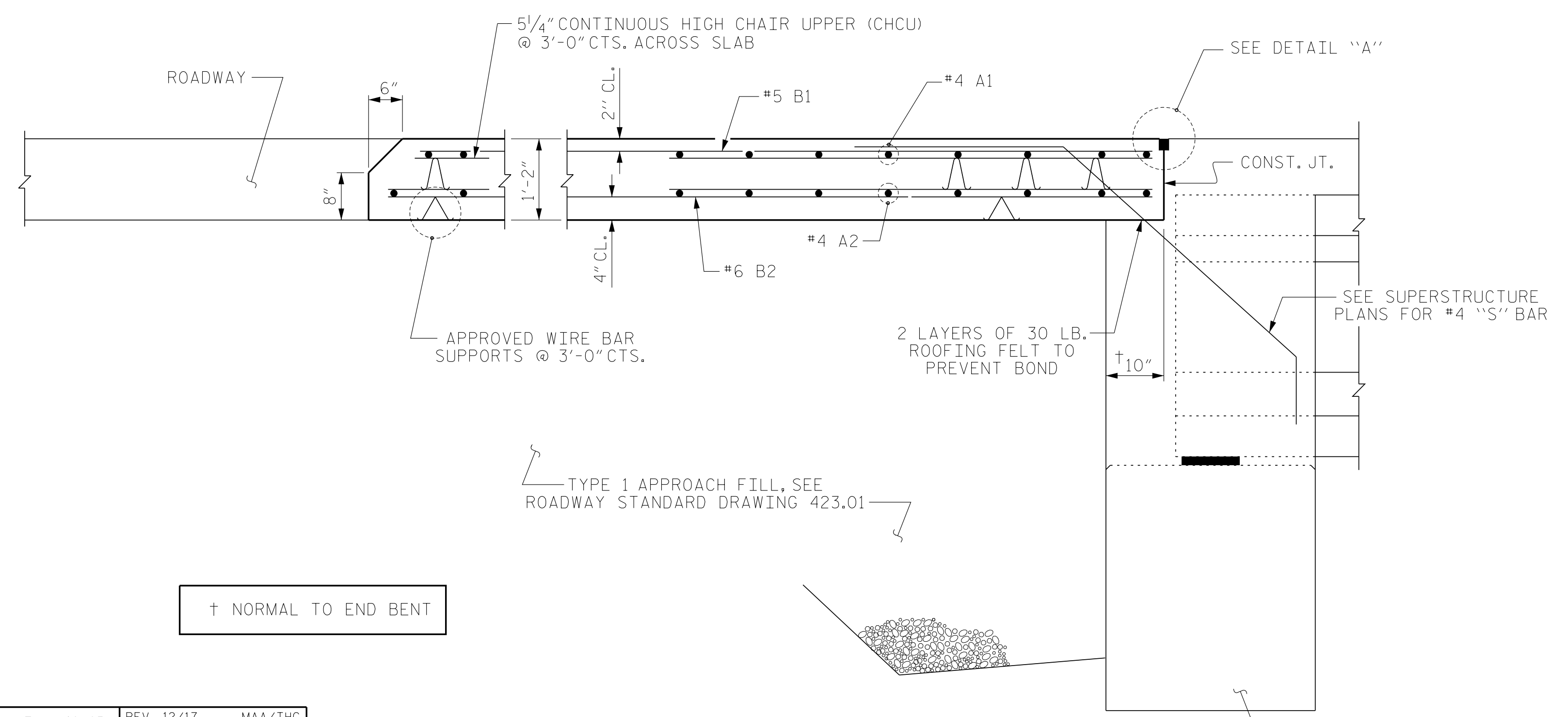
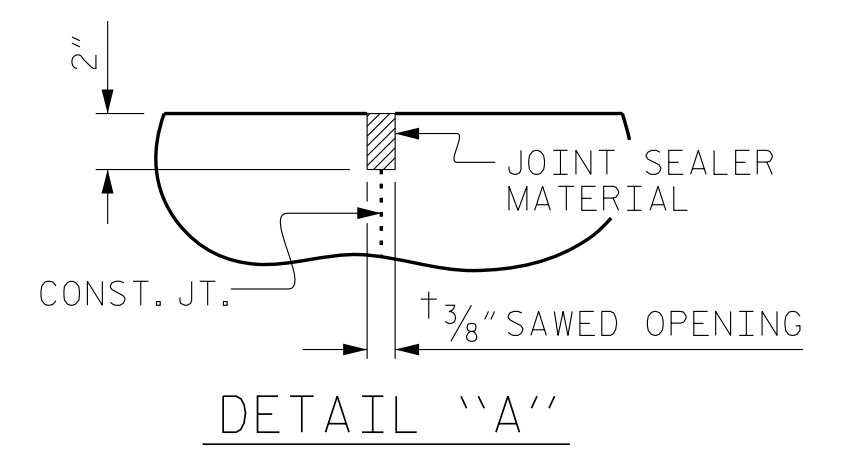
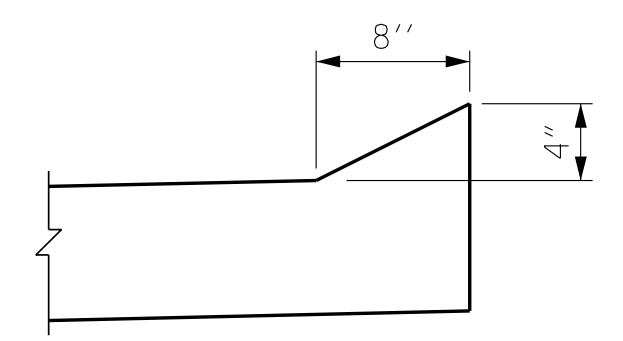
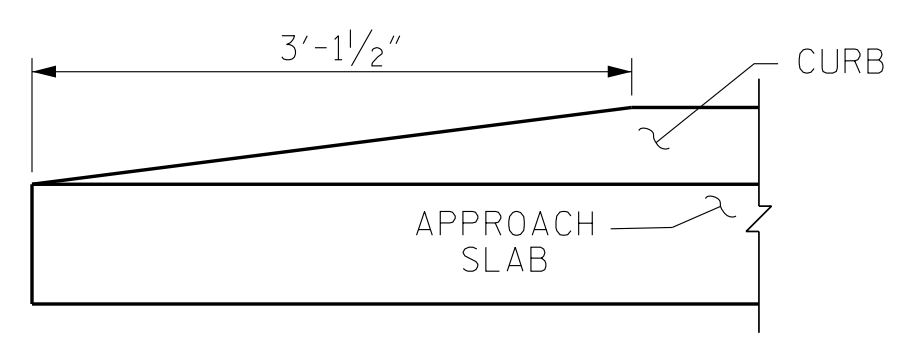
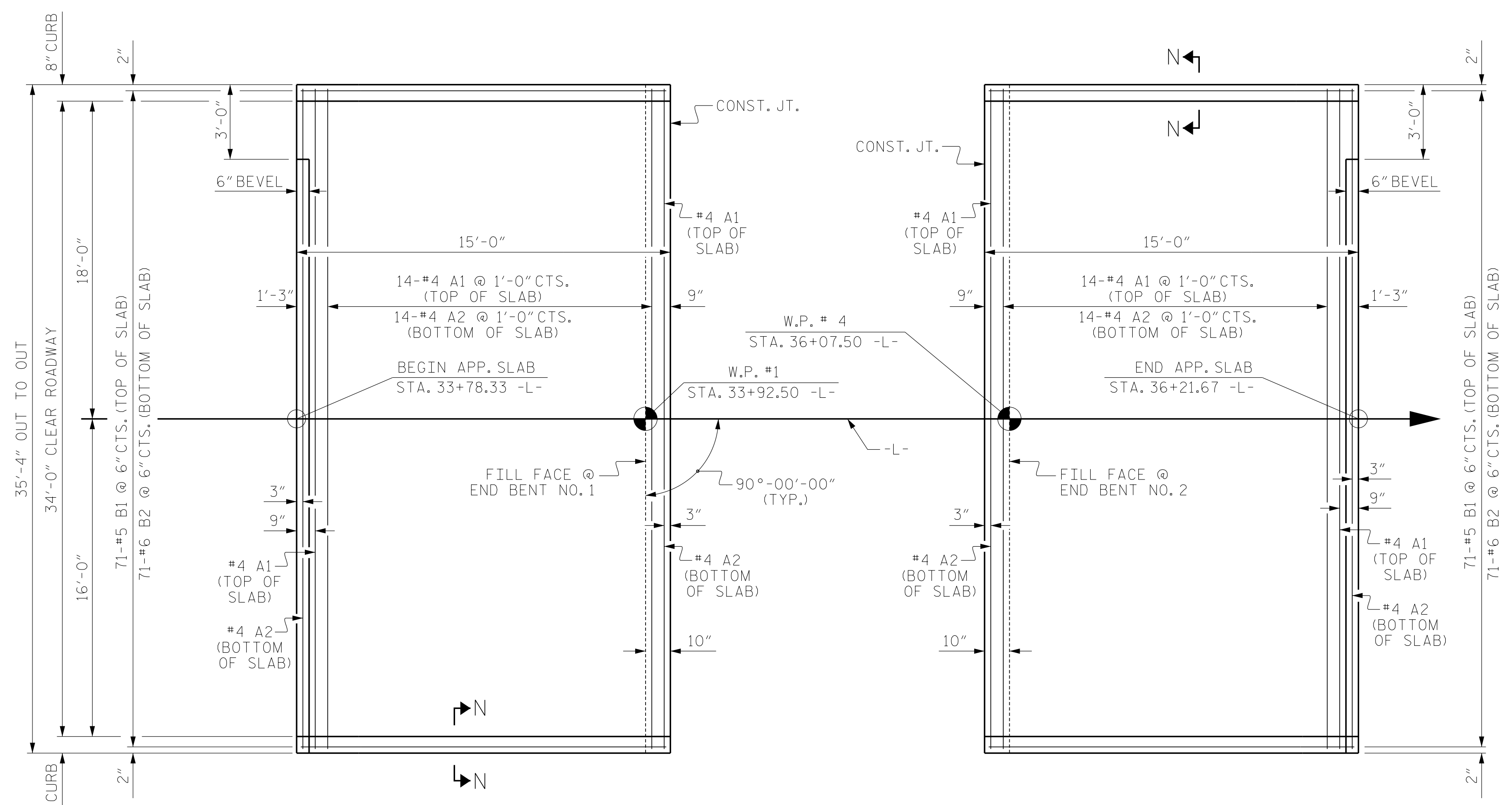
BILL OF MATERIAL

FOR ONE APPROACH SLAB
(2 REQ'D)

| BAR | NO. | SIZE | TYPE | LENGTH | WEIGHT |
|----------------------------------|-----|------|------|-----------|--------|
| * A1 | 16 | #4 | STR | 35'-0" | 374 |
| A2 | 16 | #4 | STR | 35'-0" | 374 |
| * B1 | 71 | #5 | STR | 14'-2" | 1049 |
| B2 | 71 | #6 | STR | 14'-8" | 1564 |
| REINFORCING STEEL | | | | 1938 LBS. | |
| * EPOXY COATED REINFORCING STEEL | | | | 1423 LBS. | |
| CLASS AA CONCRETE | | | | 22.7 C.Y. | |

SPLICE LENGTHS

| BAR SIZE | EPOXY COATED | UNCOATED |
|----------|--------------|----------|
| #4 | 1'-11" | 1'-7" |
| #5 | 2'-5" | 2'-0" |
| #6 | 3'-7" | 2'-5" |



PROJECT NO. B-4926
 LENOIR COUNTY
 STATION: 35+00.00 -L-

SHEET 1 OF 2

STATE OF NORTH CAROLINA
 DEPARTMENT OF TRANSPORTATION
 RALEIGH
 STANDARD
 BRIDGE APPROACH SLAB
 FOR INTEGRAL ABUTMENT
 WITH FLEXIBLE PAVEMENT



DOCUMENT NOT CONSIDERED FINAL
 UNLESS ALL SIGNATURES COMPLETED

JMT Johnson, Mirmiran, & Thompson Inc.
 4700 Falls of Neuse Rd, Suite 100,
 Raleigh, NC, 27609
 License No: C-3097

REVISIONS

| NO. | BY: | DATE: | NO. | BY: | DATE: |
|-----|-----|-------|-----|-----|-------|
| 1 | | | 3 | | |
| 2 | | | 4 | | |

SHEET NO. S2-38
 TOTAL SHEETS 39

W:\Projects\2023\B-4926\Lenoir\20_834\Structures\Lenoir_3A\Drawings\2023_07_25_10_49_26_SML_ASO_L38.dgn
 DATE: 05/12/2023 10:52 AM on Monday, October 02, 2023

| | | | |
|--------------------------|---------------|------------|---------|
| DRAWN BY : TLA | 10/05 | REV. 12/17 | MAA/THC |
| CHECKED BY : GM | 5/06 | REV. 06/19 | BNB/THC |
| | | REV. 07/23 | BNB/SNM |
| DWN. BY: WDC | DATE: 03/2023 | | |
| CHKD. BY: PRG | DATE: 03/2023 | | |
| DES. EGR. OF RECORD: PRG | DATE: 03/2023 | | |