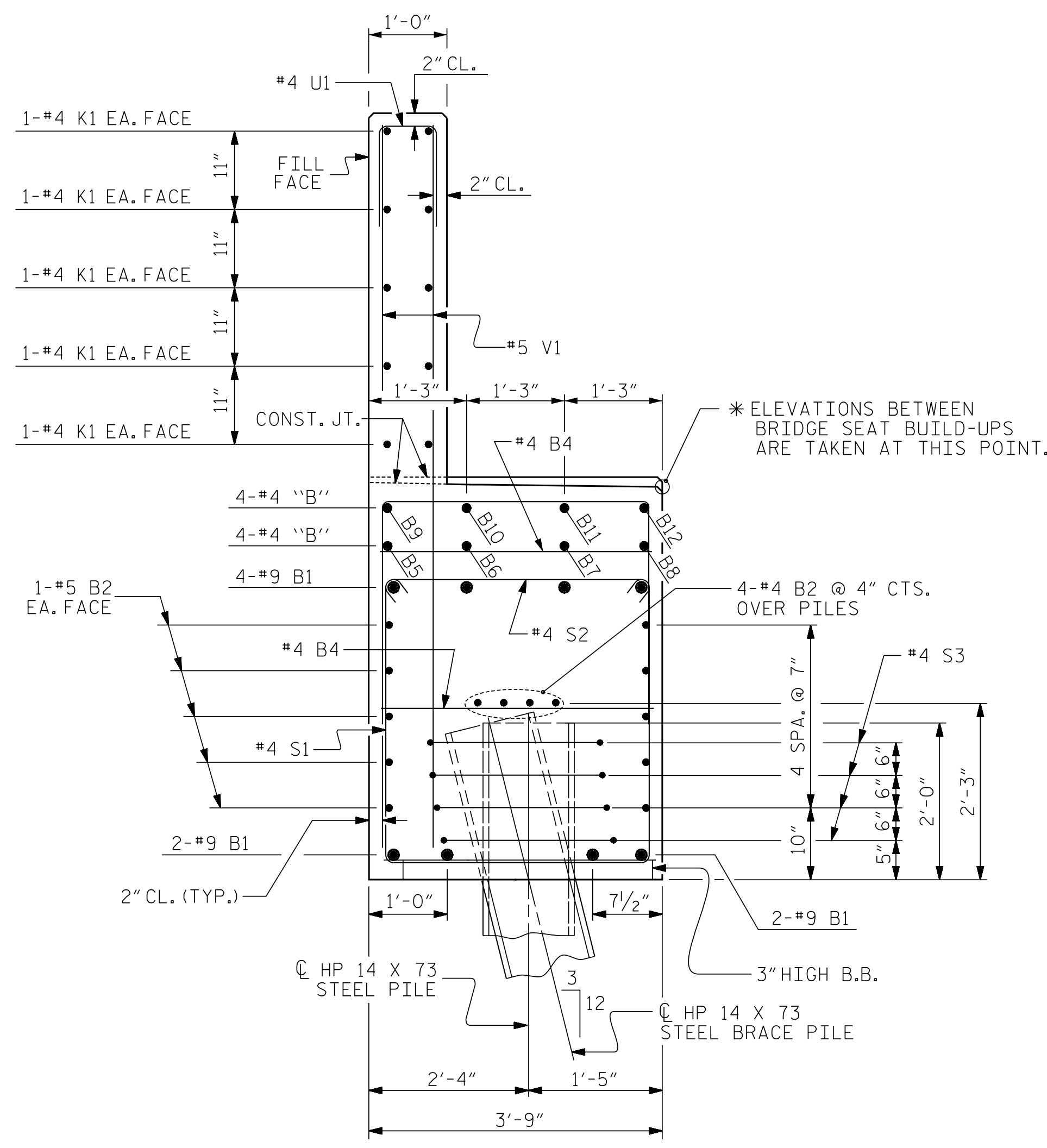


BAGGED STONE AND PIPE SHALL BE PLACED IMMEDIATELY AFTER COMPLETION OF END BENT EXCAVATION. PIPE MAY BE EITHER CONCRETE, CORRUGATED STEEL, CORRUGATED ALUMINUM ALLOY, OR CORRUGATED PLASTIC. PERFORATED PIPE WILL NOT BE ALLOWED.

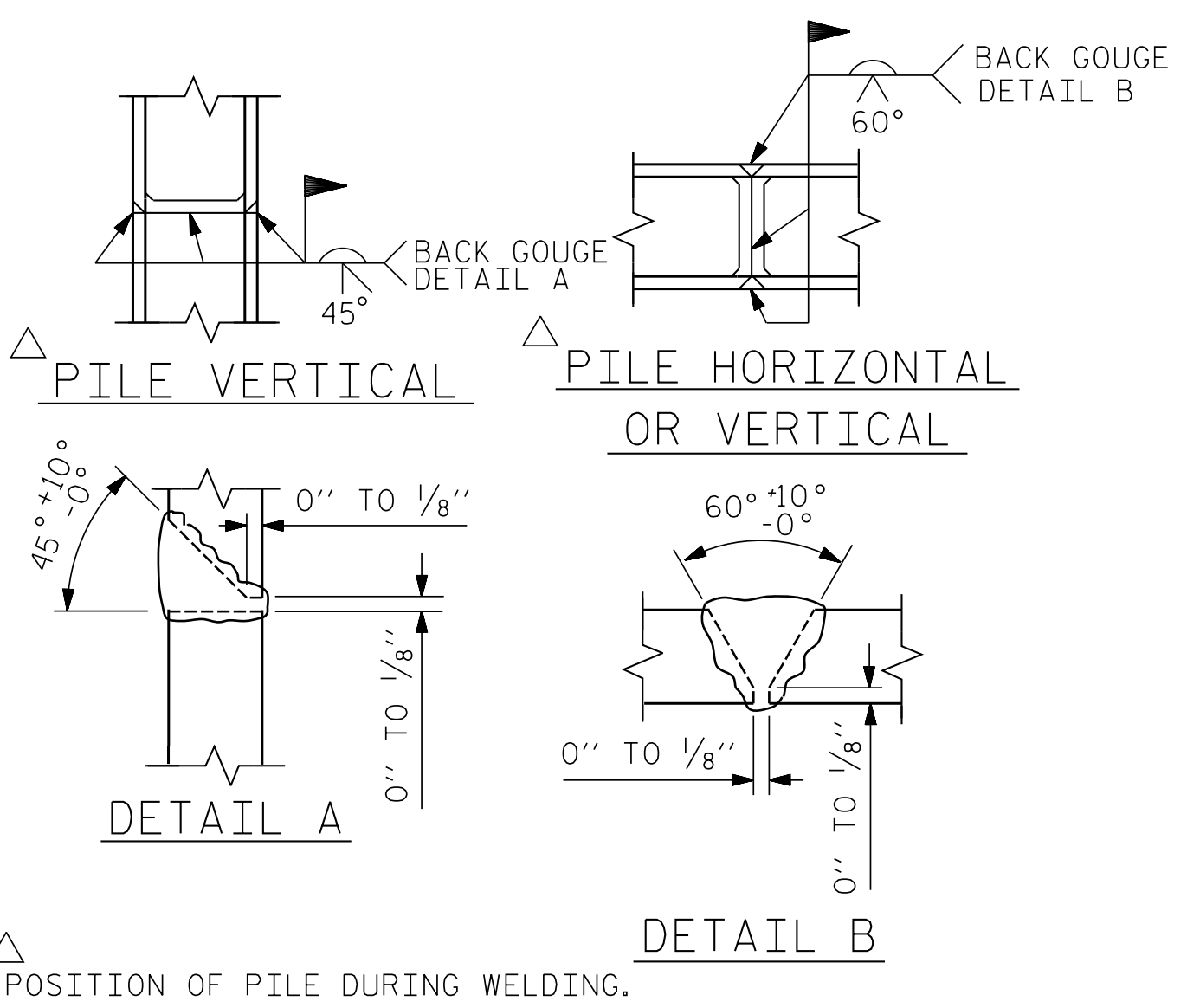
BAGGED STONE SHALL REMAIN IN PLACE UNTIL THE ENGINEER DIRECTS THAT IT BE REMOVED. THE CONTRACTOR SHALL REMOVE AND DISPOSE OF SILT ACCUMULATIONS AT BAGGED STONE WHEN SO DIRECTED BY THE ENGINEER. BAGS SHALL BE REMOVED AND REPLACED WHENEVER THE ENGINEER DETERMINES THAT THEY HAVE DETERIORATED AND LOST THEIR EFFECTIVENESS.

NO SEPARATE PAYMENT WILL BE MADE FOR THIS WORK AND THE ENTIRE COST OF THIS WORK SHALL BE INCLUDED IN THE UNIT CONTRACT PRICE BID FOR THE SEVERAL PAY ITEMS.

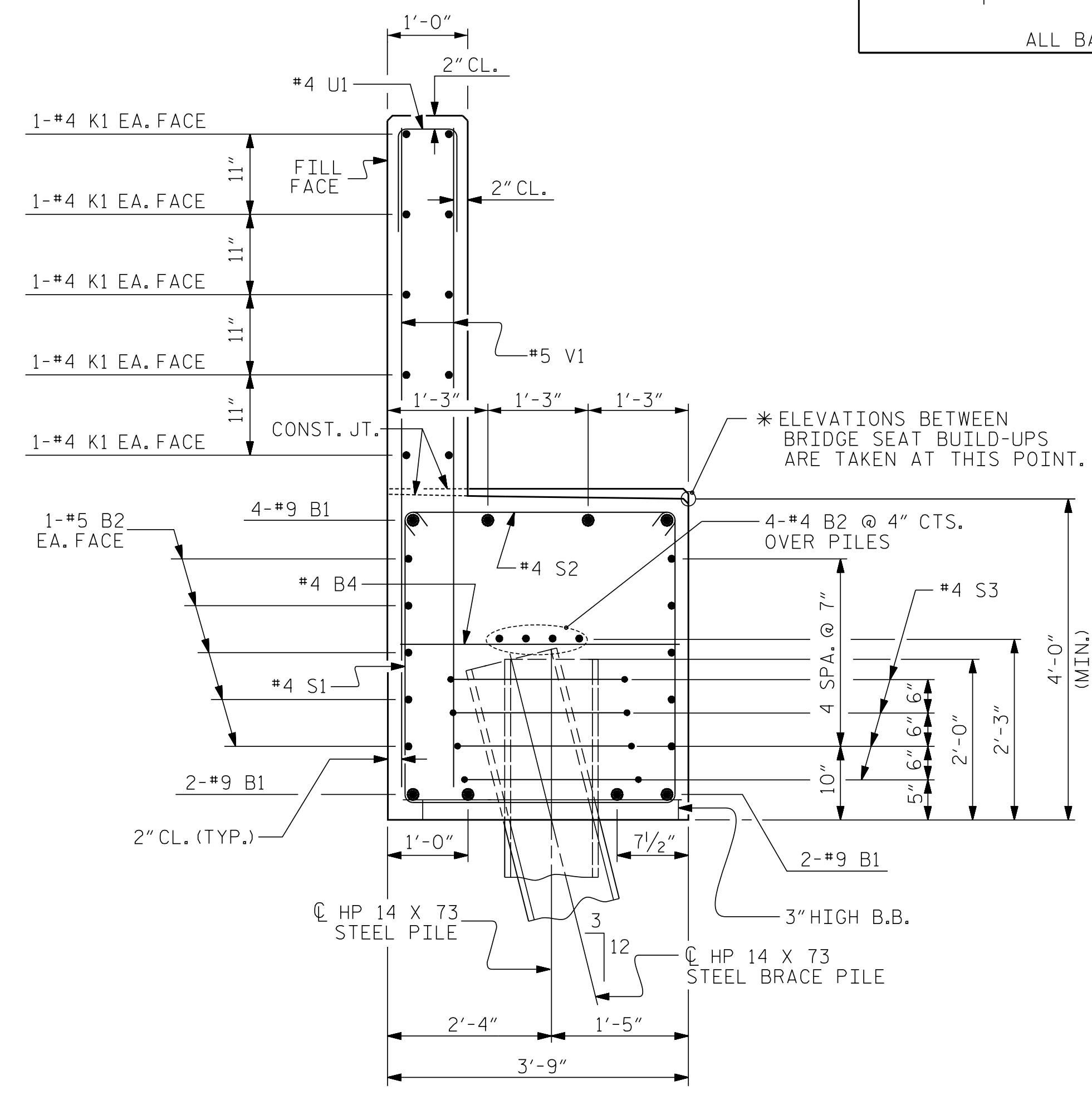
### TEMPORARY DRAINAGE AT END BENT



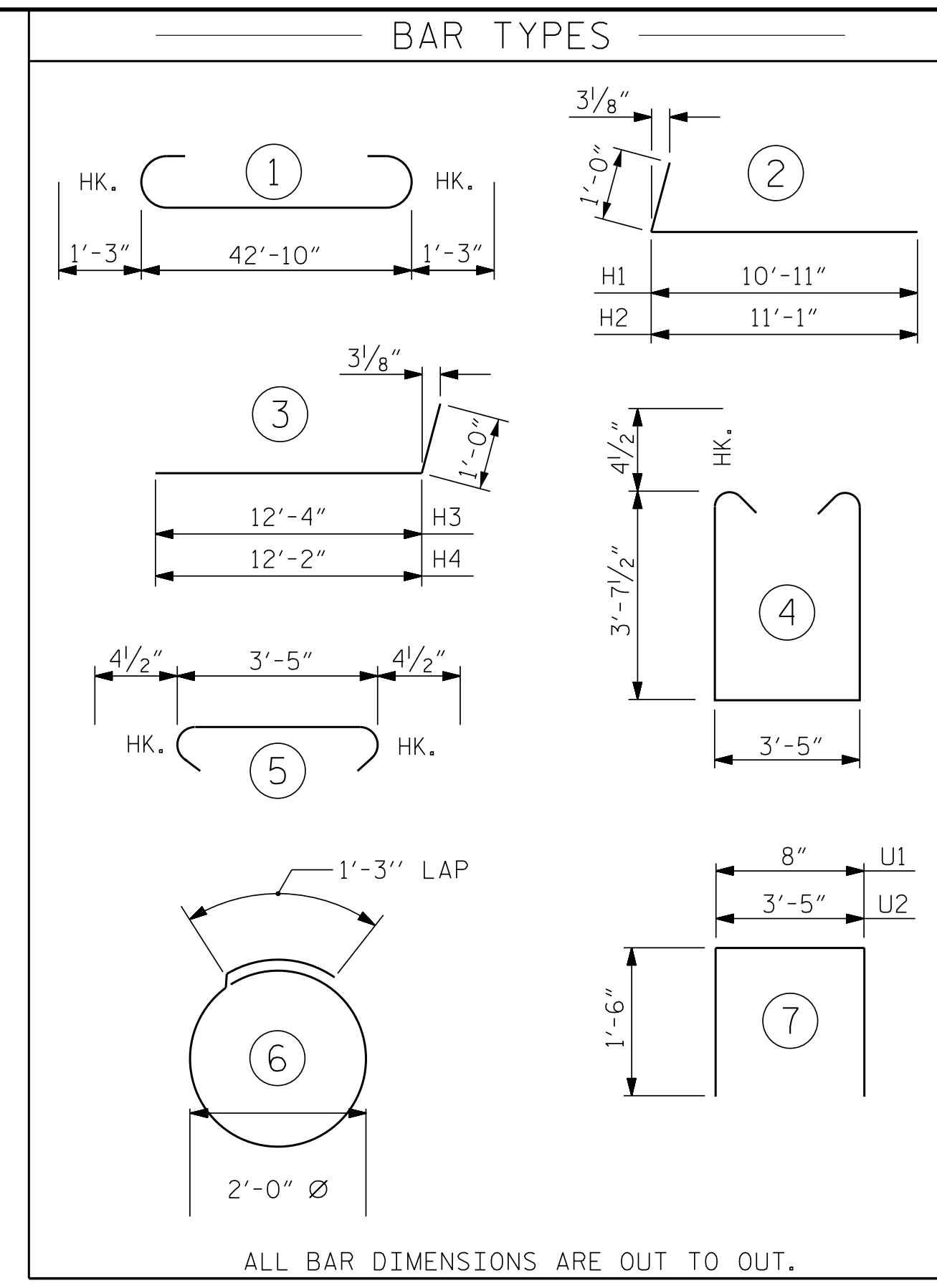
**SECTION B-B**  
(CONCRETE COLLAR NOT SHOWN FOR CLARITY. SEE SHEET 1 OF 3 FOR DETAILS)



### PILE SPLICE DETAILS



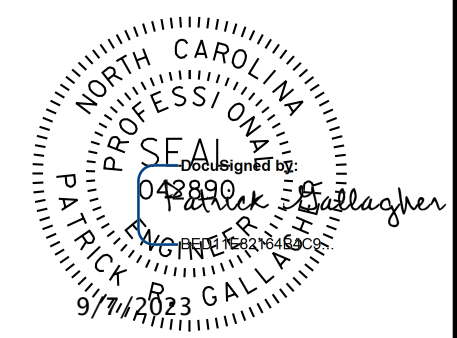
**SECTION A-A**  
(CONCRETE COLLAR NOT SHOWN FOR CLARITY. SEE SHEET 1 OF 3 FOR DETAILS)



BILL OF MATERIAL					
END BENT NO. 2					
BAR	NO.	SIZE	TYPE	LENGTH	WEIGHT
B1	8	#9		45'-4"	1233
B2	10	#5	STR	42'-10"	447
B3	8	#4	STR	22'-8"	121
B4	14	#4	STR	3'-5"	32
B5	1	#4	STR	23'-10"	16
B6	1	#4	STR	23'-6"	16
B7	1	#4	STR	23'-2"	15
B8	1	#4	STR	22'-11"	15
B9	1	#4	STR	8'-10"	6
B10	1	#4	STR	8'-6"	6
B11	1	#4	STR	8'-2"	5
B12	1	#4	STR	7'-11"	5
H1	20	#6	2	11'-11"	358
H2	20	#6	2	12'-1"	363
H3	23	#6	3	13'-4"	460
H4	23	#6	3	13'-2"	455
K1	20	#4	STR	22'-8"	303
K2	12	#4	STR	3'-4"	27
S1	52	#4	4	11'-5"	397
S2	52	#4	5	4'-2"	145
S3	32	#4	6	7'-7"	162
U1	36	#4	7	3'-8"	88
U2	16	#4	7	6'-5"	69
V1	72	#5	STR	8'-0"	601
V2	32	#5	STR	9'-8"	323
V3	10	#5	STR	10'-7"	110
V4	8	#5	STR	10'-6"	88
V5	8	#5	STR	10'-5"	87
V6	8	#5	STR	10'-4"	86

REINFORCING STEEL	6039 LBS.
CLASS A CONCRETE BREAKDOWN	
POUR #1 CAP, LOWER PART OF WINGS & COLLARS	31.6 C.Y.
POUR #2 BACKWALL & UPPER PART OF WINGS	12.8 C.Y.
<b>TOTAL CLASS A CONCRETE</b>	<b>44.4 C.Y.</b>

PROJECT NO. B-4926  
LENOIR COUNTY  
 STATION: 25+45.00 -L-  
 SHEET 3 OF 3



STATE OF NORTH CAROLINA  
 DEPARTMENT OF TRANSPORTATION  
 RALEIGH

**SUBSTRUCTURE**

**END BENT No. 2**

**DETAILS**

**DOCUMENT NOT CONSIDERED FINAL UNLESS ALL SIGNATURES COMPLETED**

**JWT** Johnson, Mirmiran, & Thompson Inc.  
 4700 Falls of Neuse Rd, Suite 100,  
 Raleigh, NC, 27609  
 License No: C-3097

REVISIONS					
NO.	BY:	DATE:	NO.	BY:	DATE:
1			3		
2			4		

SHEET NO.	S1-46
TOTAL SHEETS	49

W:\CADD\Structures\0317-01 - B-4926 Lenoir\_20\Drawings\031\_B4926\_S1\_U1\_E201\_046.dgn  
 DATE: 03/2023 10:33 AM on Wednesday, September 06, 2023  
 TIME: 03:33 PM

DWN. BY: WDC DATE: 03/2023  
 CHKD. BY: PRG DATE: 03/2023  
 DES. EGR. OF RECORD: PRG DATE: 03/2023