

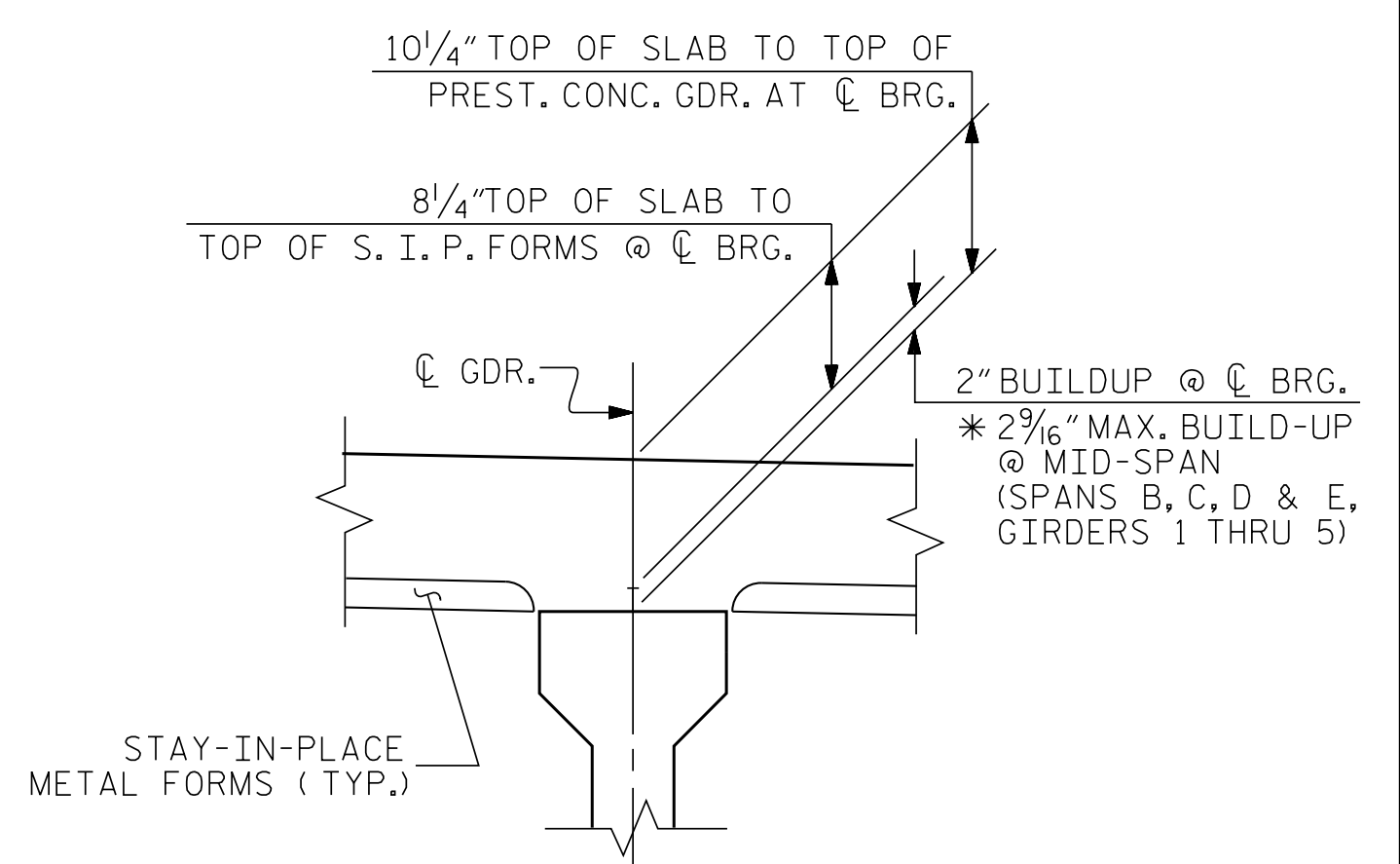
NOTES

PROVIDE 1/4" HIGH BEAM BOLSTERS UPPER AT 4'-0" CTS. ATOP THE METAL STAY-IN-PLACE FORMS TO SUPPORT THE BOTTOM MAT OF "A" BARS. WHEN USING REMOVABLE FORMS, PROVIDE CONTINUOUS HIGH CHAIRS FOR METAL DECK (C.H.C.M.) @ 4'-0" CTS. WITH A HEIGHT TO SUPPORT THE BOTTOM MAT OF 'A' BARS A CLEAR DISTANCE OF 2 1/2" ABOVE THE TOP OF THE REMOVABLE FORM.

LONGITUDINAL STEEL MAY BE SHIFTED SLIGHTLY, AS NECESSARY, TO AVOID INTERFERENCE WITH STIRRUPS IN PRESTRESSED CONCRETE GIRDERS.

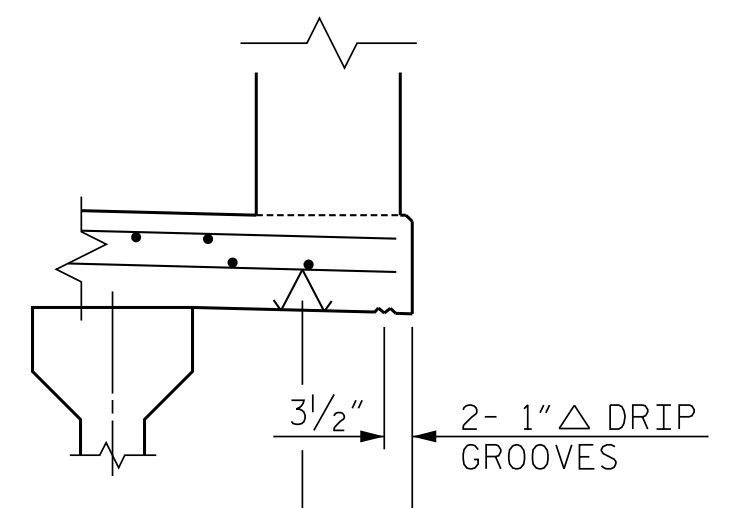
PREVIOUSLY CAST CONCRETE IN A CONTINUOUS UNIT SHALL HAVE ATTAINED A MINIMUM COMPRESSIVE STRENGTH OF 3,000 PSI BEFORE ADDITIONAL CONCRETE IS CAST IN THE UNIT.

METAL STAY-IN-PLACE FORMS SHALL NOT BE WELDED TO THE SUPPORT ANGLES WITHIN THE LINK SLAB AREAS. SEE "PLAN OF SPAN" SHEETS FOR LOCATION.



DETAIL "A"

* BASED ON PREDICTED FINAL CAMBER AND THEORETICAL GRADE LINE ELEVATIONS.



OVERHANG DETAIL

(RIGHT SIDE SHOWN, LEFT SIDE SIMIAR)

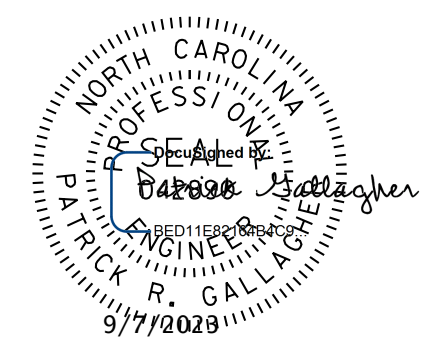
PROJECT NO. B-4926

LENOIR COUNTY

STATION: 25+45.00 -L-

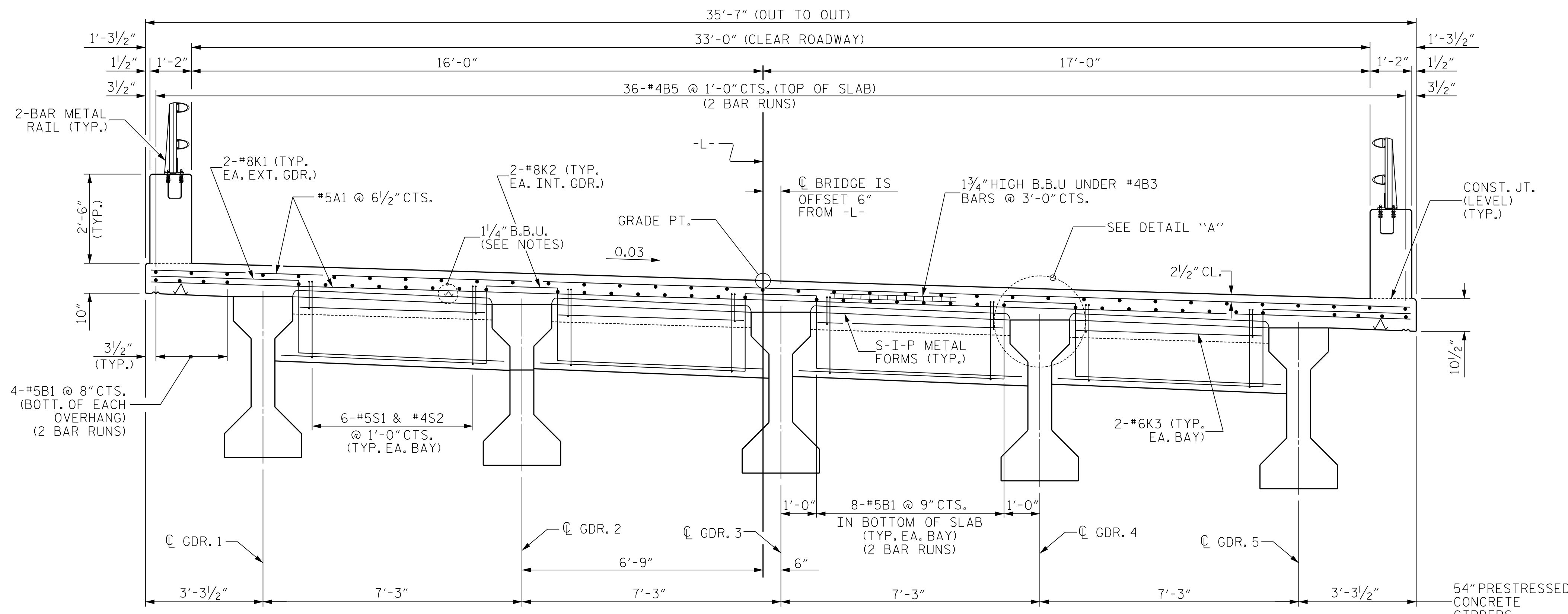
SHEET 1 OF 2

STATE OF NORTH CAROLINA
DEPARTMENT OF TRANSPORTATION
RALEIGH
SUPERSTRUCTURE
TYPICAL SECTION

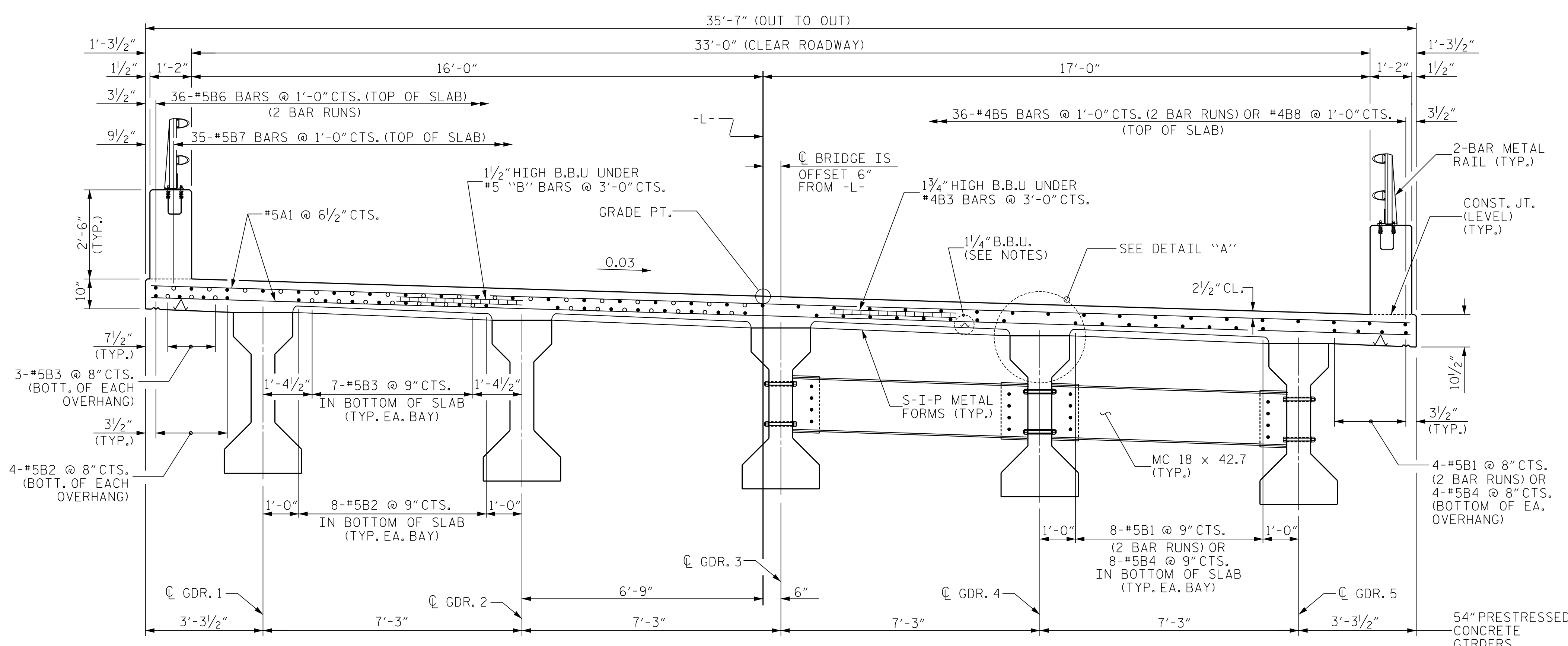


DOCUMENT NOT CONSIDERED FINAL UNLESS ALL SIGNATURES COMPLETED
JMT Johnson, Mirmiran, & Thompson Inc.
4700 Falls of Neuse Rd, Suite 100,
Raleigh, NC, 27609
License No: C-3097

REVISIONS						SHEET NO.	
NO.	BY:	DATE:	NO.	BY:	DATE:	S1-9	
1			3			TOTAL SHEETS	
2			4			49	



TYPICAL SECTION AT END BENT DIAPHRAGM



TYPICAL HALF-SECTION LINK SLAB AT BENT

TYPICAL HALF-SECTION AT INTERMEDIATE DIAPHRAGM

TYPICAL SECTION

DWN. BY: WDC DATE: 03/2023
CHKD. BY: PRG DATE: 03/2023
DES. EGR. OF RECORD: PRG DATE: 03/2023

\\cnc\proj\15\VC\Structures\0317-01 - B-4926 Lenoir_20 & 3A\Structures\Lenoir_20\Drawings\DOT_BA926_SML_T_S01_009.dgn
DATE: 03/23 PM on Wednesday, September 06, 2023