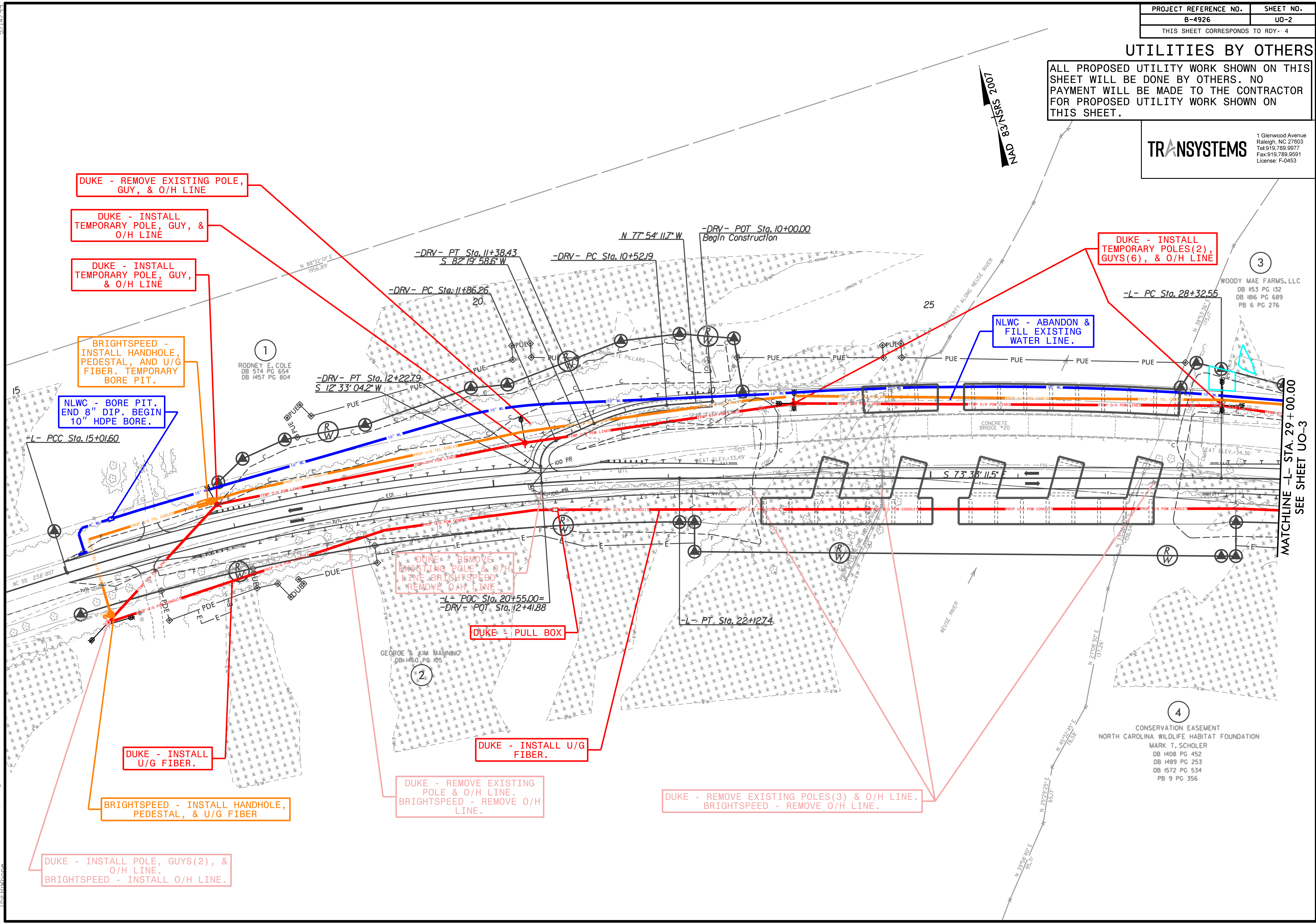


UTILITIES BY OTHERS

ALL PROPOSED UTILITY WORK SHOWN ON THIS SHEET WILL BE DONE BY OTHERS. NO PAYMENT WILL BE MADE TO THE CONTRACTOR FOR PROPOSED UTILITY WORK SHOWN ON THIS SHEET.

TRANSYSTEMS
 1 Glenwood Avenue
 Raleigh, NC 27603
 Tel: 919.789.9977
 Fax: 919.789.9591
 License: F-0453



DUKE - REMOVE EXISTING POLE, GUY, & O/H LINE

DUKE - INSTALL TEMPORARY POLE, GUY, & O/H LINE

DUKE - INSTALL TEMPORARY POLE, GUY, & O/H LINE

BRIGHTSPEED - INSTALL HANDHOLE, PEDESTAL, AND U/G FIBER. TEMPORARY BORE PIT.

NLWC - BORE PIT. END 8" DIP. BEGIN 10" HDPE BORE.

DUKE - INSTALL TEMPORARY POLES(2), GUYS(6), & O/H LINE

NLWC - ABANDON & FILL EXISTING WATER LINE.

DUKE - REMOVE EXISTING POLE & O/H LINE. BRIGHTSPEED - REMOVE O/H LINE.

DUKE - PULL BOX

DUKE - INSTALL U/G FIBER.

DUKE - REMOVE EXISTING POLE & O/H LINE. BRIGHTSPEED - REMOVE O/H LINE.

DUKE - REMOVE EXISTING POLES(3) & O/H LINE. BRIGHTSPEED - REMOVE O/H LINE.

DUKE - INSTALL U/G FIBER.

BRIGHTSPEED - INSTALL HANDHOLE, PEDESTAL, & U/G FIBER

DUKE - INSTALL POLE, GUYS(2), & O/H LINE. BRIGHTSPEED - INSTALL O/H LINE.

5/14/99
 1/9/2016 4:26:49 PM Ut_4_UO2_psh.dgn

3

WOODY MAE FARMS, LLC
 DB 153 PG 132
 DB 186 PG 689
 PB 6 PG 276

1

RODNEY E. COLE
 DB 574 PG 654
 DB 1457 PG 804

2

GEORGE & KIM MANNING
 DB 1460 PG 185

4

CONSERVATION EASEMENT
 NORTH CAROLINA WILDLIFE HABITAT FOUNDATION
 MARK T. SCHOLER
 DB 1408 PG 452
 DB 1489 PG 253
 DB 1572 PG 534
 PB 9 PG 356

MATCHLINE -L- STA. 29+00.00
 SEE SHEET UO-3