

| | |
|--|--|
| PROJECT REFERENCE NO. B-4926 | SHEET NO. 6 |
| ROADWAY DESIGN ENGINEER DAVID W. GARDNER, JR. SEAL 033871 ENGINEER | HYDRAULICS ENGINEER ANDREW M. HOWELL SEAL 035621 ENGINEER |
| <p>DOCUMENT NOT CONSIDERED FINAL UNLESS ALL SIGNATURES COMPLETED</p> <p>TRANSYSTEMS</p> <p>1 Glenwood Avenue Raleigh, NC 27603 Tel: 919.789.9977 Fax: 919.789.9591 License: F-0453</p> | |

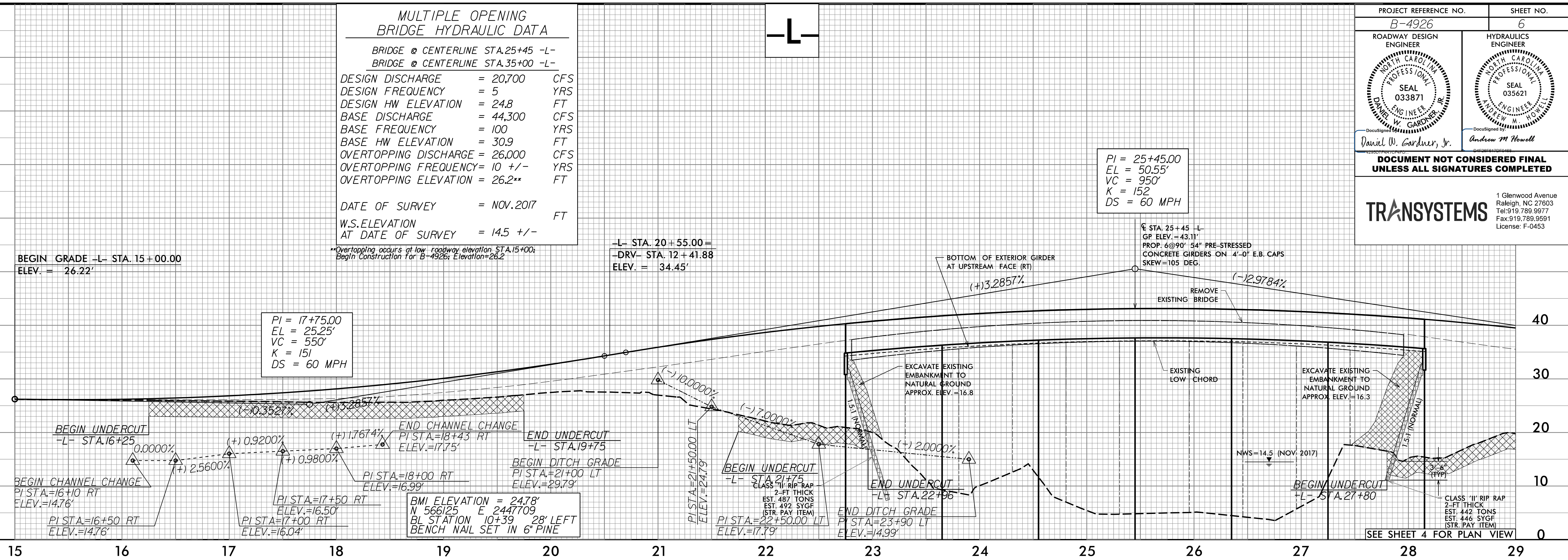
**MULTIPLE OPENING
BRIDGE HYDRAULIC DATA**

BRIDGE @ CENTERLINE STA.25+45 -L-
BRIDGE @ CENTERLINE STA.35+00 -L-

DESIGN DISCHARGE = 20,700 CFS
DESIGN FREQUENCY = 5 YRS
DESIGN HW ELEVATION = 24.8 FT
BASE DISCHARGE = 44,300 CFS
BASE FREQUENCY = 100 YRS
BASE HW ELEVATION = 30.9 FT
OVERTOPPING DISCHARGE = 26,000 CFS
OVERTOPPING FREQUENCY = 10 +/- YRS
OVERTOPPING ELEVATION = 26.2** FT

DATE OF SURVEY = NOV.2017 FT
W.S.ELEVATION AT DATE OF SURVEY = 14.5 +/-

**Overtopping occurs at low roadway elevation STA.15+00; Begin Construction For B-4926; Elevation=26.2



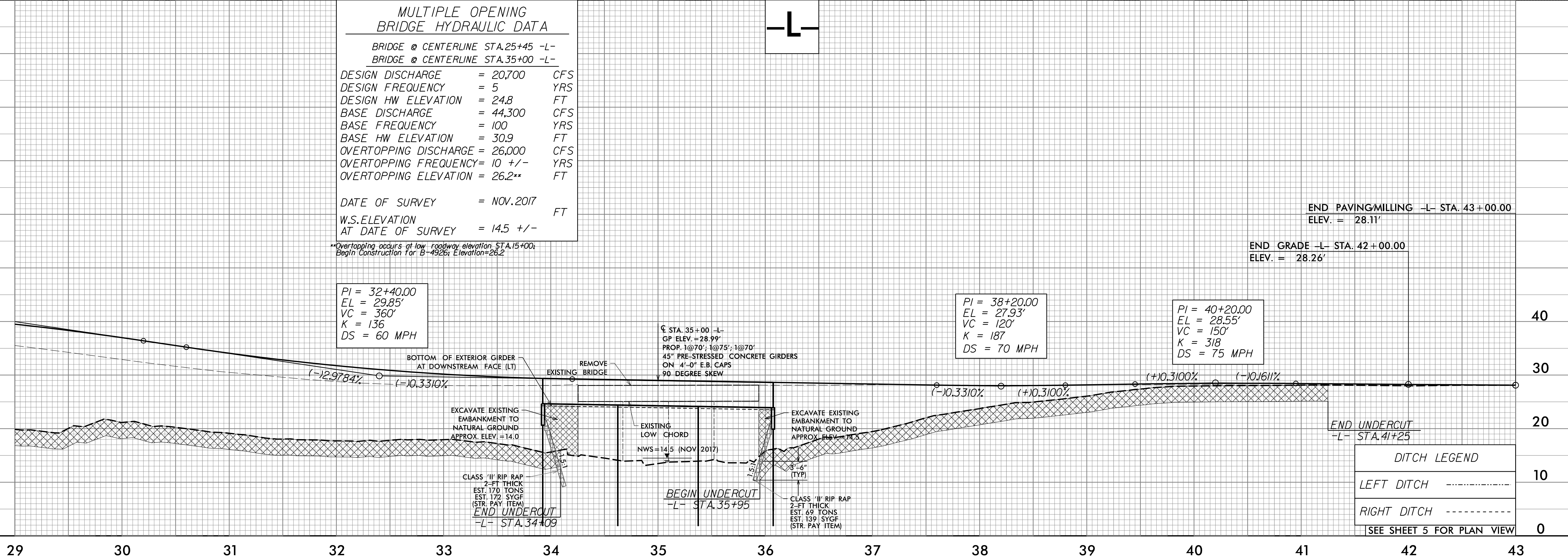
**MULTIPLE OPENING
BRIDGE HYDRAULIC DATA**

BRIDGE @ CENTERLINE STA.25+45 -L-
BRIDGE @ CENTERLINE STA.35+00 -L-

DESIGN DISCHARGE = 20,700 CFS
DESIGN FREQUENCY = 5 YRS
DESIGN HW ELEVATION = 24.8 FT
BASE DISCHARGE = 44,300 CFS
BASE FREQUENCY = 100 YRS
BASE HW ELEVATION = 30.9 FT
OVERTOPPING DISCHARGE = 26,000 CFS
OVERTOPPING FREQUENCY = 10 +/- YRS
OVERTOPPING ELEVATION = 26.2** FT

DATE OF SURVEY = NOV.2017 FT
W.S.ELEVATION AT DATE OF SURVEY = 14.5 +/-

**Overtopping occurs at low roadway elevation STA.15+00; Begin Construction For B-4926; Elevation=26.2



DITCH LEGEND

| | |
|-------------|-------|
| LEFT DITCH | ----- |
| RIGHT DITCH | ----- |

SEE SHEET 5 FOR PLAN VIEW

5/28/99
2/12/2016 B-4926_Rdy_psh6.dgn
115:16:00:00