

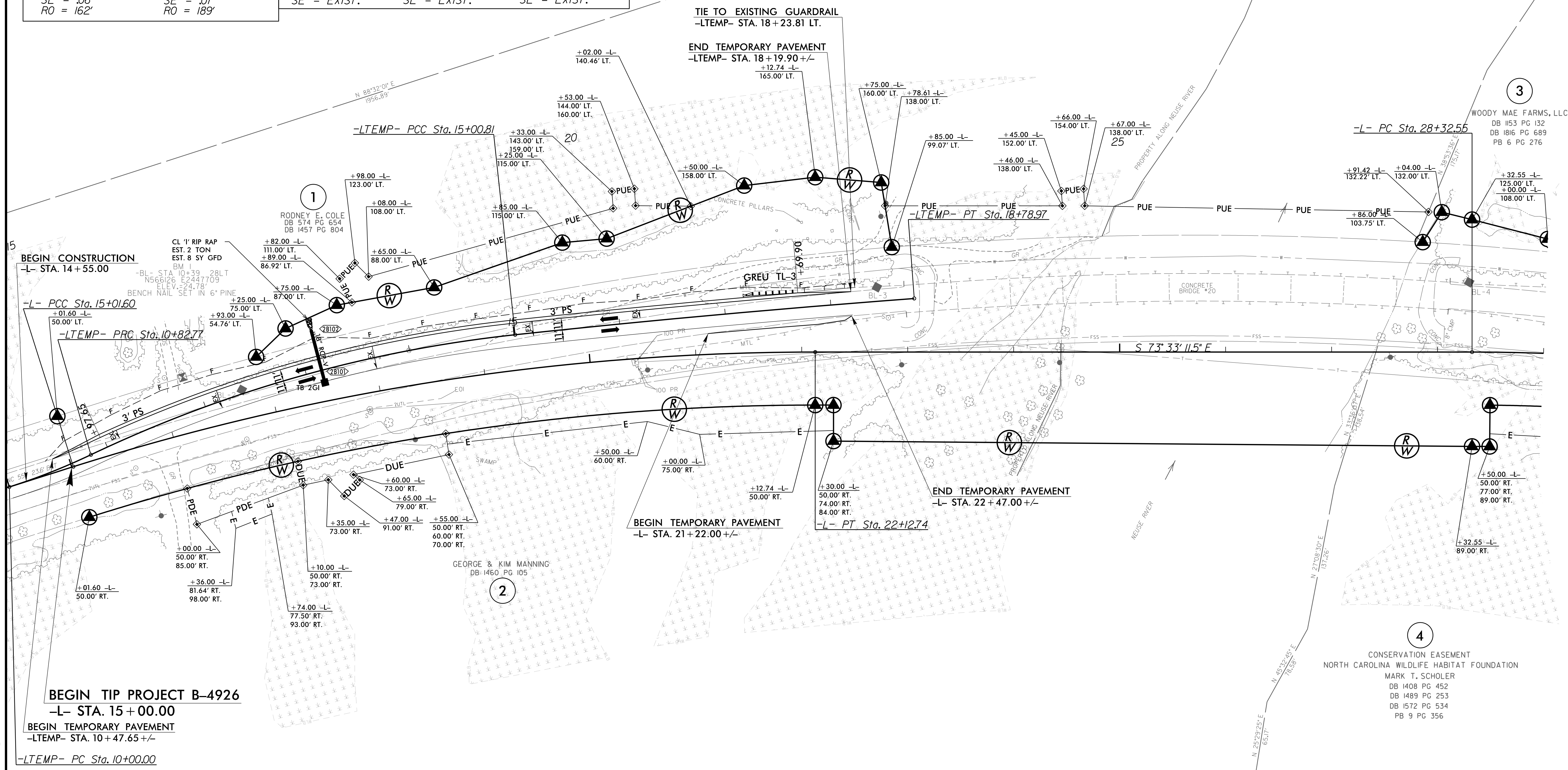
# TEMPORARY PAVEMENT WIDENING DETAIL (-LTEMP-)

**TRANSYSTEMS**

1 Glenwood Avenue  
Raleigh, NC 27603  
Tel: 919.789.9977  
Fax: 919.789.9561  
License: F-0453

PROJECT REFERENCE NO. B-4926	SHEET NO. 2B-1
RW SHEET NO.	
ROADWAY DESIGN ENGINEER SEAL 033871 DANIEL W. GARDNER, JR.	HYDRAULICS ENGINEER SEAL 035621 ANDREW M. HOWELL
DOCUMENT NOT CONSIDERED FINAL UNLESS ALL SIGNATURES COMPLETED	

-L-		-LTEMP-		
PI Sta 18+59.98	PI Sta 30+02.07	PI Sta 10+41.45	PI Sta 12+93.81	PI Sta 16+89.91
$\Delta = 17^{\circ} 33' 45.4''$ (RT)	$\Delta = 10^{\circ} 38' 32.4''$ (RT)	$\Delta = 7^{\circ} 54' 15.5''$ (LT)	$\Delta = 19^{\circ} 23' 23.1''$ (RT)	$\Delta = 1^{\circ} 48' 20.2''$ (RT)
D = 2' 28" 10.7"	D = 3' 08" 53.2"	D = 9' 32" 57.5"	D = 4' 38" 18.0"	D = 0' 28" 38.9"
L = 711.4'	L = 338.05'	L = 82.77'	L = 418.03'	L = 378.17'
T = 358.38'	T = 169.51'	T = 41.45'	T = 211.03'	T = 189.10'
R = 2,320.00'	R = 1,820.00'	R = 600.00'	R = 1,235.27'	R = 12,000.00'
SE = .06	SE = .07	SE = EXIST.	SE = EXIST.	SE = EXIST.
RO = 162'	RO = 189'			



NOTE: SEE TMP-4 FOR ADDITIONAL DETAILS INCLUDING SHORING AND PORTABLE CONCRETE BARRIER.  
SEE X-2 THRU X-5 FOR TEMPORARY PAVEMENT CROSS SECTIONS.

2/7/2024 B-4926-Rdy...dt...2B-1.dgn