

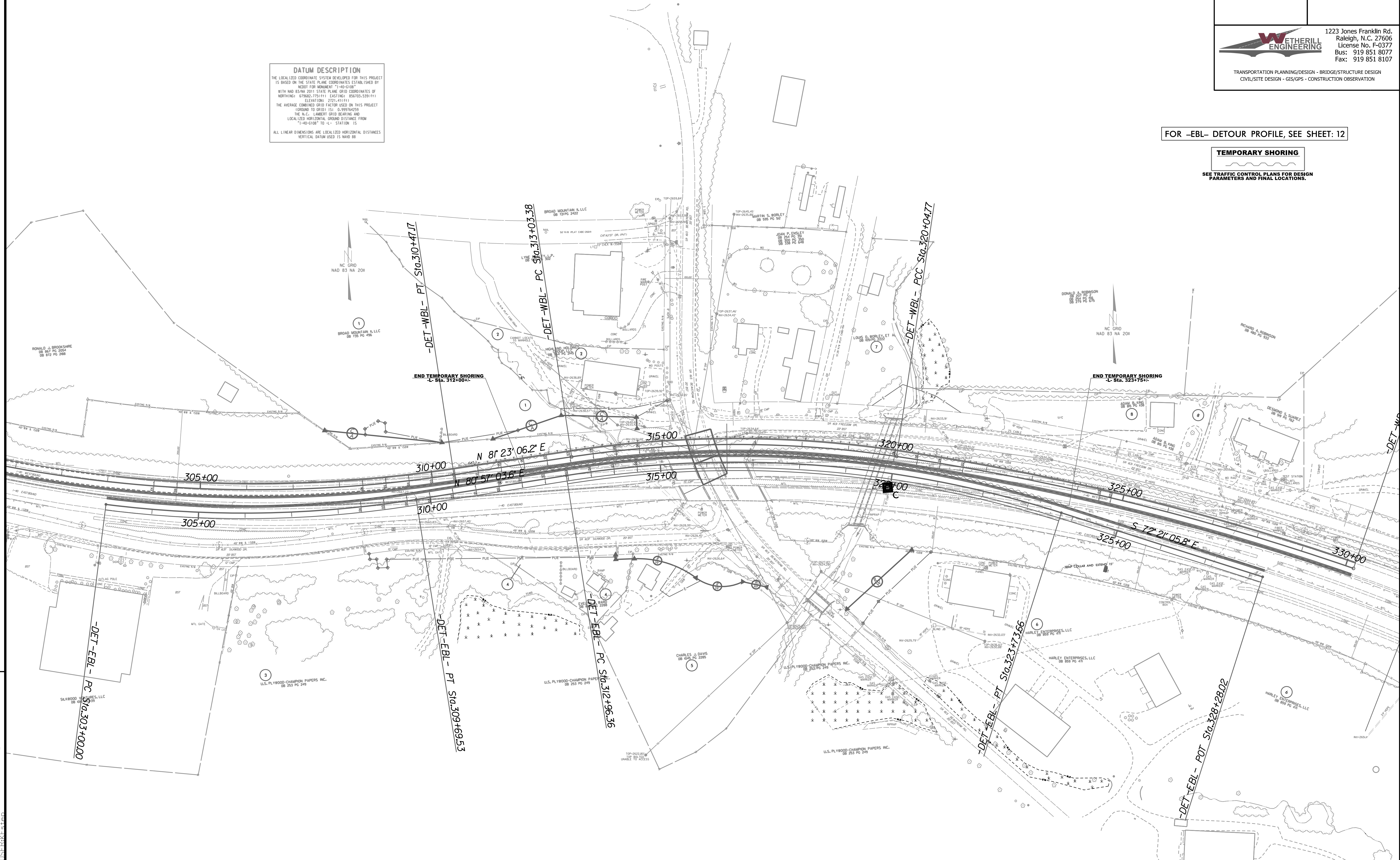


PROJECT REFERENCE NO. <i>HB-0002</i>	SHEET NO. <i>EC-8/CONST.2B-2</i>
RW SHEET NO.	
ROADWAY DESIGN ENGINEER	HYDRAULICS ENGINEER
 1223 Jones Franklin Rd. Raleigh, N.C. 27606 License No. F-0377 Bus: 919 851 8077 Fax: 919 851 8107	
TRANSPORTATION PLANNING/DESIGN - BRIDGE/STRUCTURE DESIGN CIVIL/SITE DESIGN - GIS/GPS - CONSTRUCTION OBSERVATION	

DATUM DESCRIPTION
 THE LOCALIZED COORDINATE SYSTEM DEVELOPED FOR THIS PROJECT IS BASED ON THE STATE PLANE COORDINATES ESTABLISHED BY NAD83 FOR MONUMENT "I-40-C108" WITH NAD 83/NA 2011 STATE PLANE GRID COORDINATES OF NORTHING: 879627254.111; EASTING: 8057023384.411; ELEVATION: 2721.411411'. THE AVERAGE CORNER GRID FACTOR USED ON THIS PROJECT (GROUND TO GRID) IS: 0.999764259. THE N.C. LAMBERT GRID BEARING AND LOCALIZED HORIZONTAL GROUND DISTANCE FROM "I-40-C108" TO "I-40" STATION 15. ALL LINEAR DIMENSIONS ARE LOCALIZED HORIZONTAL DISTANCES. VERTICAL DATUM USED IS NAVD 83.

FOR -EBL- DETOUR PROFILE, SEE SHEET: 12

TEMPORARY SHORING

 SEE TRAFFIC CONTROL PLANS FOR DESIGN PARAMETERS AND FINAL LOCATIONS.



REVISIONS

11/21/2023
 HB-0002-EC-8.dgn
 TSS:KAT

8/17/99