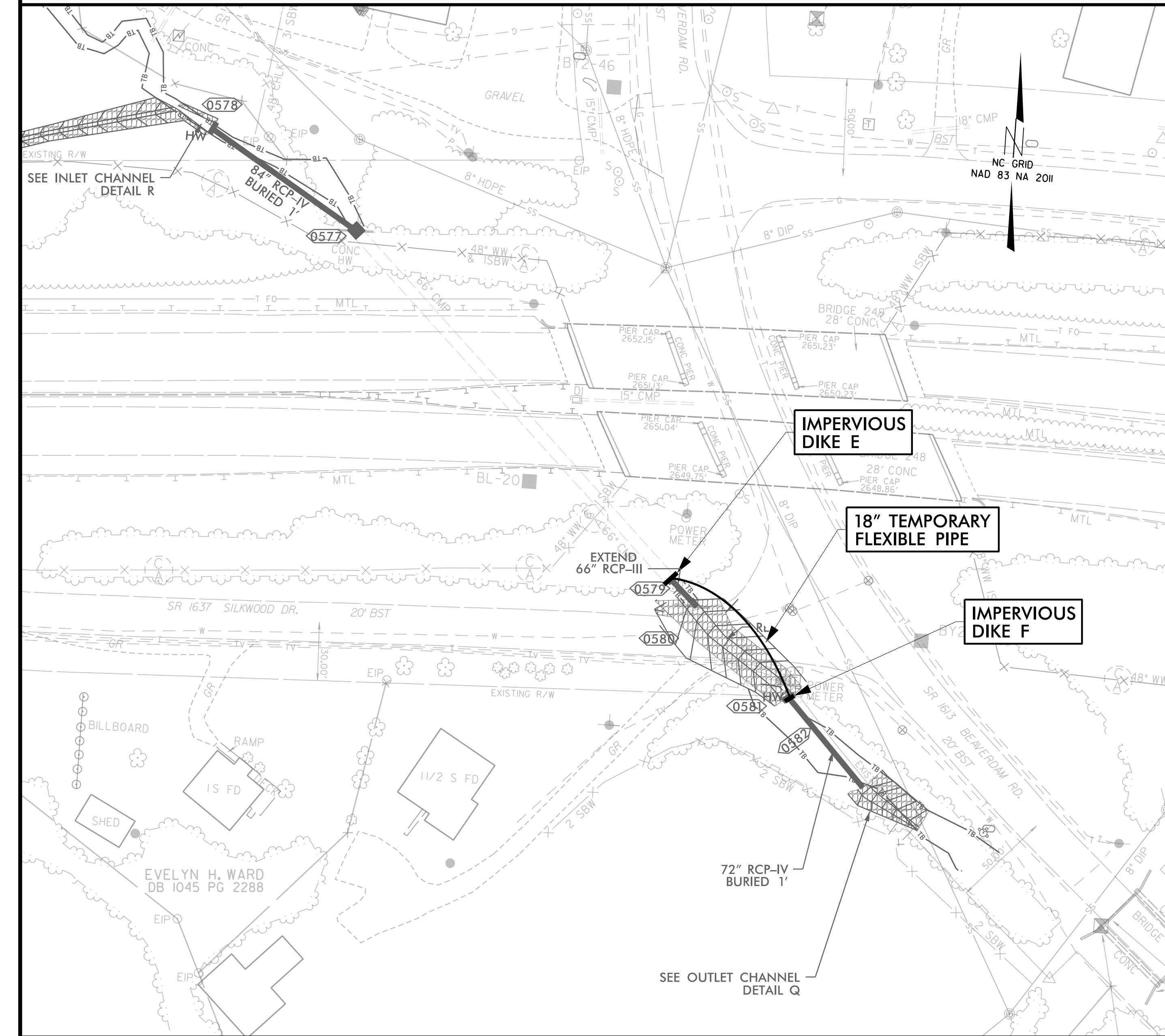


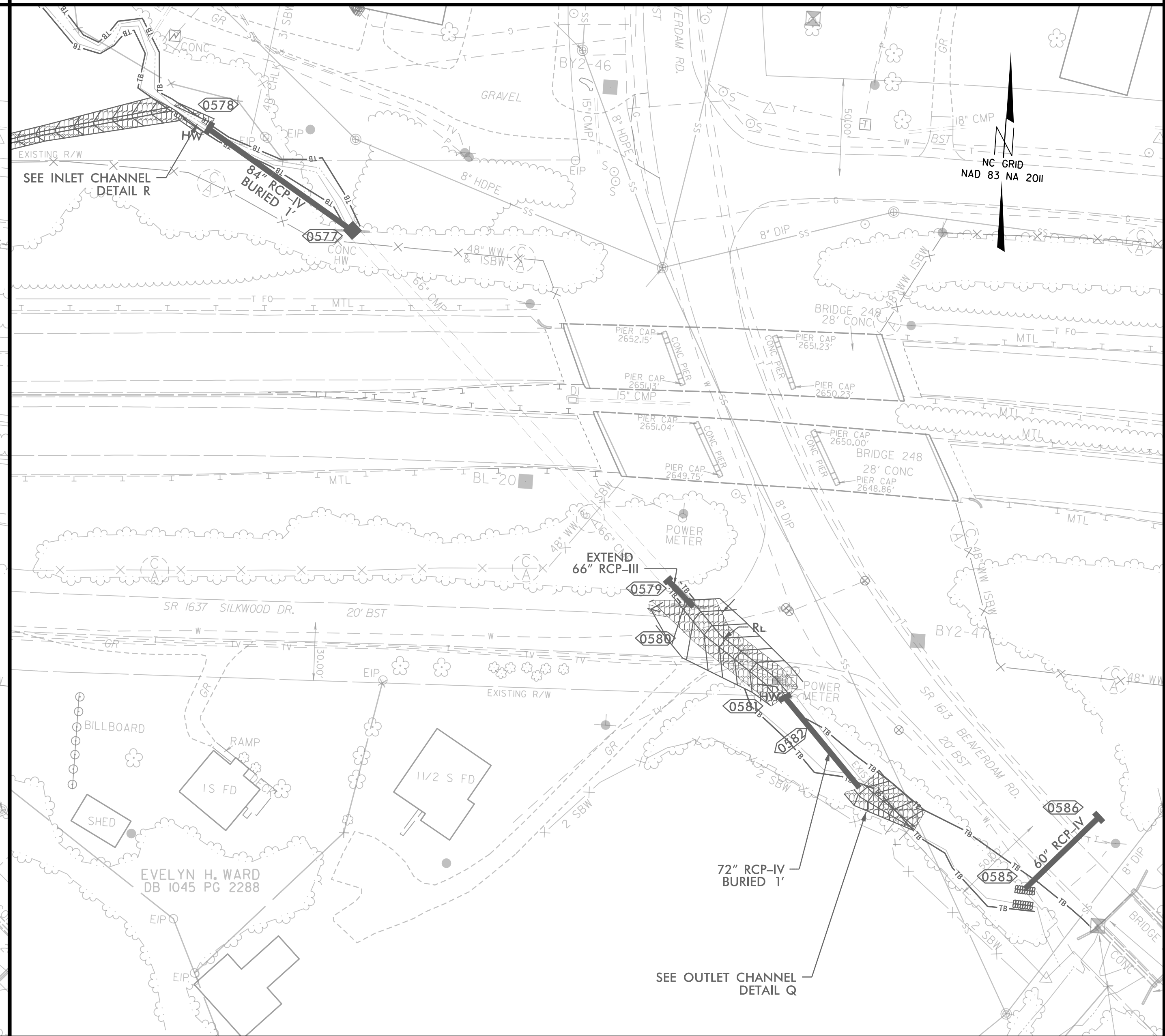
PROJECT REFERENCE NO. <i>HB-0002</i>	SHEET NO. <i>EC-5B/CONST.5</i>
RW SHEET NO.	
ROADWAY DESIGN ENGINEER	HYDRAULICS ENGINEER

# STA -L- 315 + 00 PIPE CONSTRUCTION SEQUENCE

## PHASE III



## PHASE IV



1. UTILIZE SPECIAL STILLING BASIN(S) AS NECESSARY DURING PHASE III PIPE INSTALLATION
2. INSTALL IMPERVIOUS DIKES E AND F, AND 18" TEMPORARY PIPE TO DIVERT FLOW
3. REMOVE 72" CMP, COMPLETE 6' BASE DITCH (SEE DETAIL H) AND INSTALL RIPRAP
4. REMOVE TEMPORARY PIPE, INSTALL 66" RCP-III

1. UTILIZE SPECIAL STILLING BASIN(S) AS NECESSARY DURING PHASE IV PIPE INSTALLATION
2. INSTALL 60" RCP-IV
3. INSTALL RIPRAP AT OUTLET
4. REMOVE SPECIAL STILLING BASIN(S)
5. COMPLETE ROADWAY