

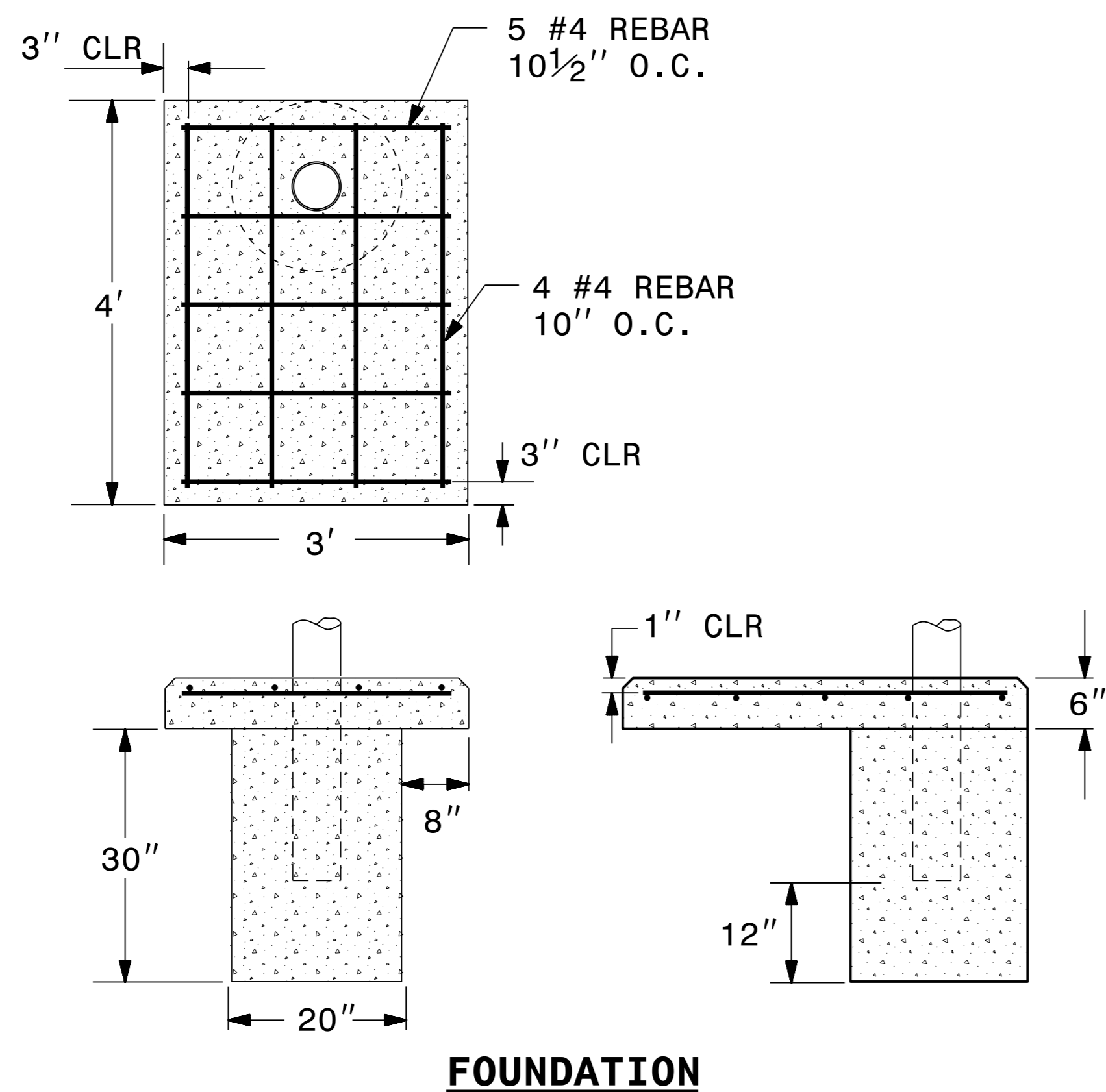


DocuSigned by:
Nathan Dominguez
4C869565A5834

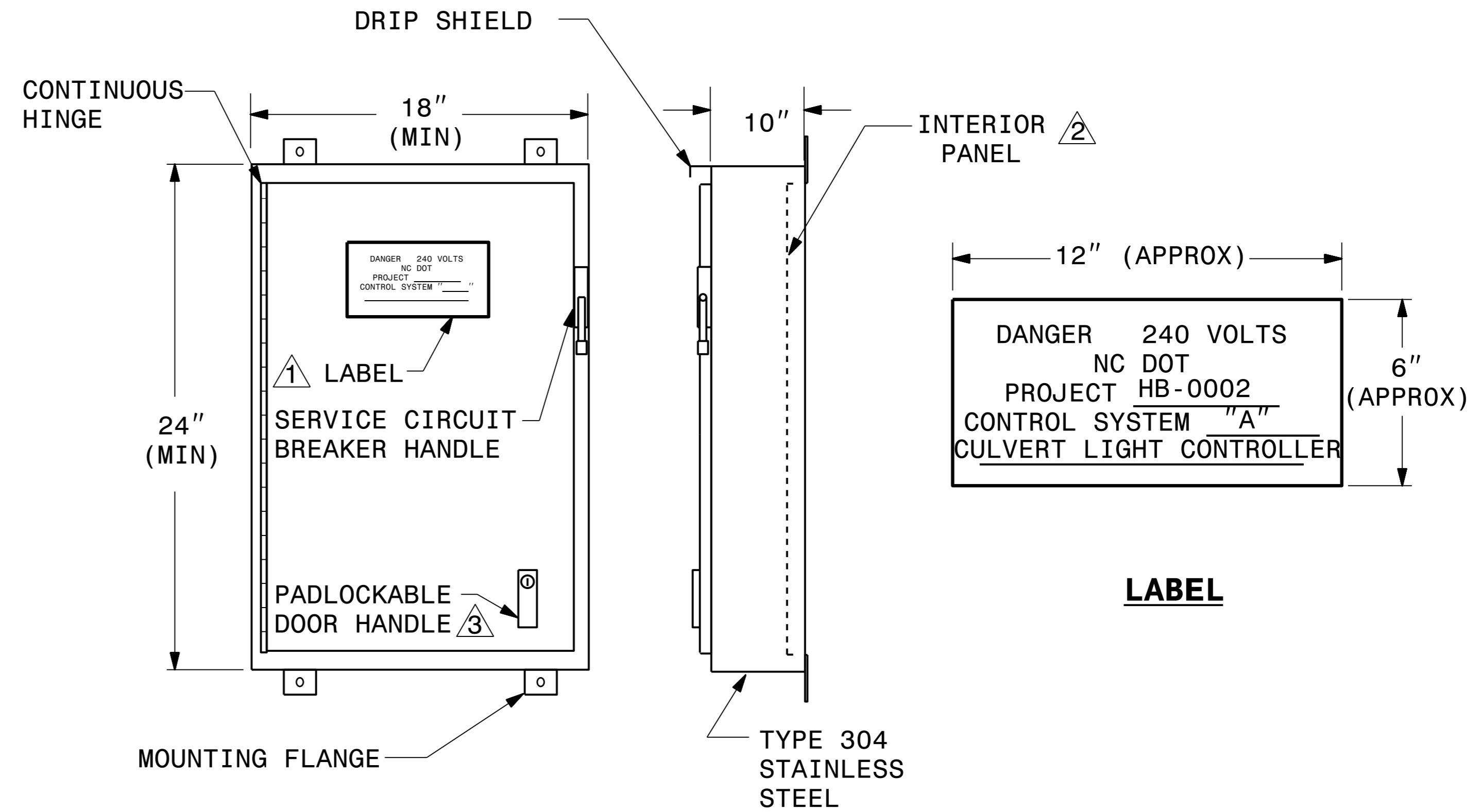
**DOCUMENT NOT CONSIDERED FINAL
UNLESS ALL SIGNATURES COMPLETED**

△ NOTES

- 1 PERMANENTLY ATTACH A LABEL TO THE ENCLOSURE DOOR SHOWING THE WORK ORDER NUMBER, CONTROL SYSTEM LETTER DESIGNATION AND LOCATION DESCRIPTION SHOWN IN THE LOAD SCHEDULE AT EACH CONTROL SYSTEM IN THE PLANS.
- 2 SEE SHEET E-4 FOR INTERIOR PANEL AND COMPONENT LAYOUT.
- 3 PROVIDE DOOR CLOSING MECHANISM INTERLOCKED WITH SERVICE CIRCUIT BREAKER HANDLE. SEE STANDARD SPECIFICATIONS FOR DETAILS.
- 4 PHOTOCELL NOT SHOWN.
- 5 INCLUDE ARC FLASH AND SHOCK HAZARD WARNING LABEL IN ACCORANCE WITH NEC ARTICLE 110.16.



FOUNDATION



NEMA TYPE 3R STAINLESS STEEL ENCLOSURE △ △

2			
1			
Rev.	Date	Description	Approved
NORTH CAROLINA DEPARTMENT OF TRANSPORTATION ROADWAY DESIGN LIGHTING/ELECTRICAL SECTION CONTROL PANEL DETAILS SHEET 3 OF 3 FOUNDATION AND ENCLOSURE HAYWOOD COUNTY			
Drawn By:	RGH	Approved By:	Dwg No.:

I9-DEC-2023 2:40 PM C:\Projects\HB0002\Lighting\Plan SP Est\Plan\HB0002.LE_PSH.E6.dgn
rgghall AT RD-329781L