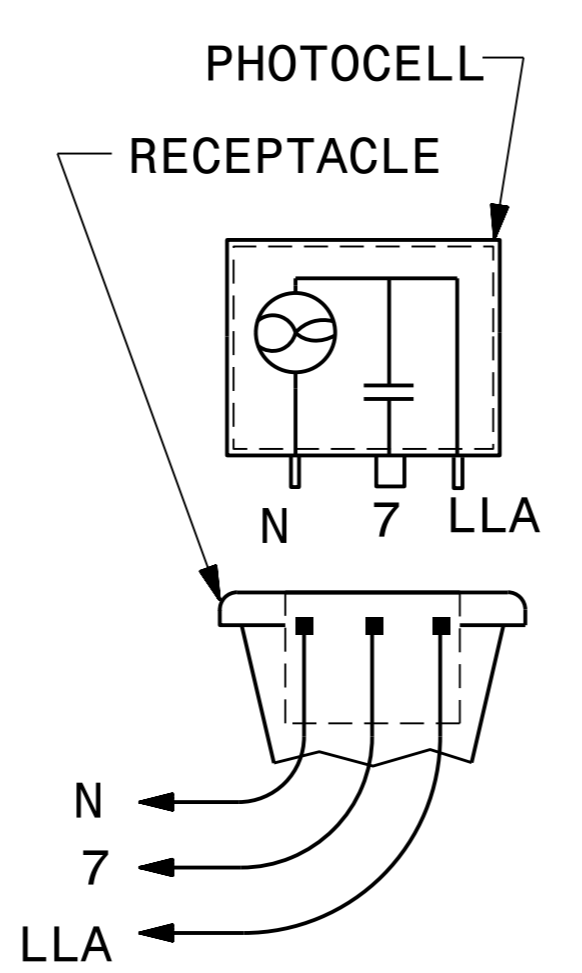
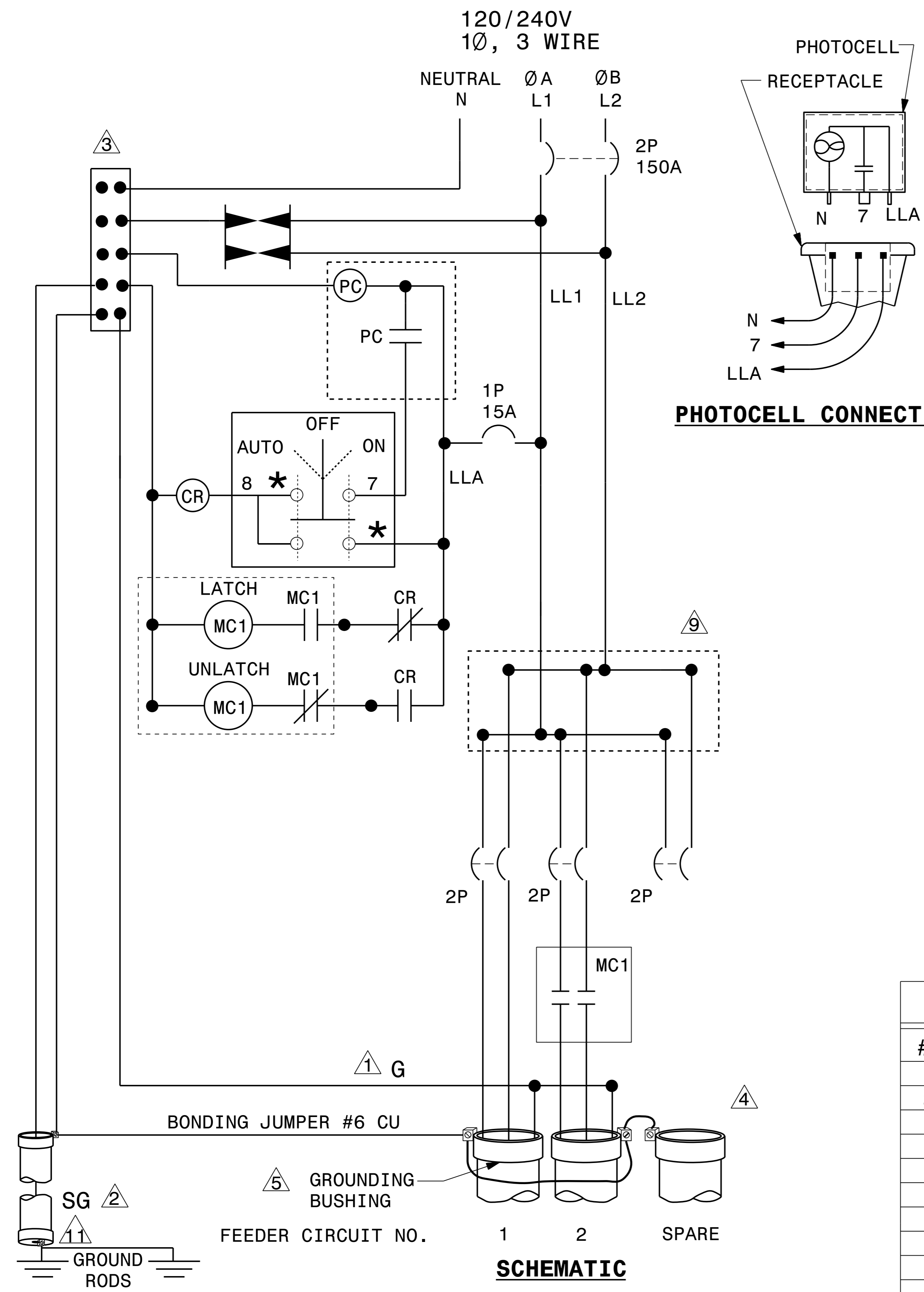


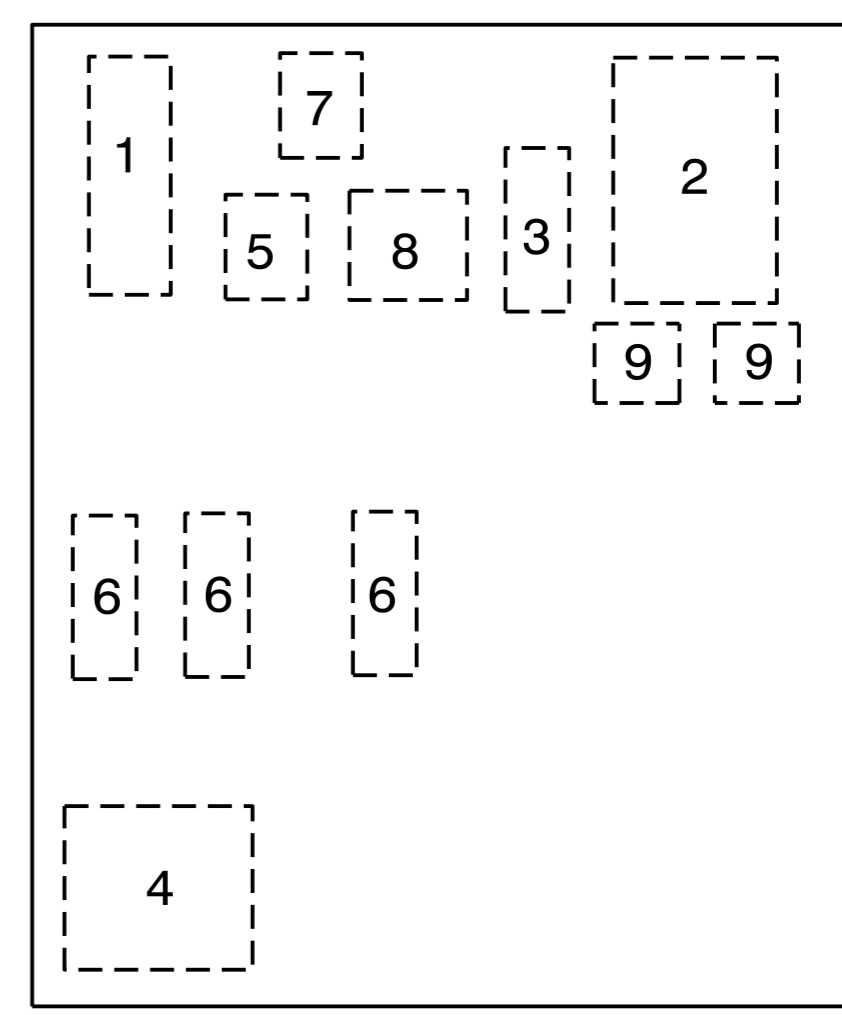
DOCUMENT NOT CONSIDERED FINAL UNLESS ALL SIGNATURES COMPLETED



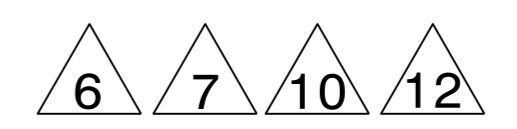
PHOTOCELL CONNECTIONS

- NOTES**
- 1 EQUIPMENT GROUNDS (G) SHALL BE SIZED ACCORDING TO CIRCUIT DESCRIPTION. SEE PLANS.
  - 2 SYSTEM GROUND (SG) SHALL BE CONTINUOUS FROM THE NEUTRAL BAR TO THE GROUNDING ELECTRODE (GROUND ROD).
  - 3 THE NEUTRAL BAR SHALL BE BONDED TO THE PANEL.
  - 4 INSTALL 3 CONDUITS AS SHOWN. UNUSED CONDUIT SHALL BE CAPPED IN THE CONTROL SYSTEM JUNCTION BOX.
  - 5 INSTALL A GROUNDING BUSHING ON EACH METAL CONDUIT. CONNECT BONDING JUMPER AS REQUIRED BY NEC.
  - 6 SEE SHEET E-6 FOR ENCLOSURE.
  - 7 THE CONTROL SYSTEM MUST BE LABELED "SUITABLE FOR USE AS SERVICE EQUIPMENT." REFER TO STANDARD SPECIFICATION 1408-2 FOR OTHER REQUIREMENTS.
  - 8 REMOVED
  - 9 PROVIDE MULTI-TAP LOAD LUGS OR POWER DISTRIBUTION BLOCKS.
  - 10 PROVIDE MANUFACTURER SUPPLIED MOUNTING BRACKETS OR SCREW STUDS PERMANENTLY ATTACHED TO THE BACK PANEL, FOR MOUNTING COMPONENTS.
  - 11 PROVIDE AND INSTALL A CONDUIT CHOKE ON THE UNDERGROUND END OF THE 3/4" RGS SYSTEM GROUND CONDUIT.

12 INCLUDE SERVICE BARRIERS AS REQUIRED BY THE NEC.



INTERIOR PANEL COMPONENT LAYOUT



COMPONENT LIST			
#	QTY	DESCRIPTION	SPECIFICATIONS
1	1	NEUTRAL BAR	
2	1	SERVICE CIRCUIT BREAKER	2P, 240V, 150A
3	1	CONTROL CIRCUIT BREAKER	1P, 120V, 15A
4	1	MECHANICALLY HELD CONTACTORS	2P, 240V, 60A W/120V COIL
5	1	CONTROL RELAY W/NC & NO CONTACT	120V, 10A, W/120V COIL
6	3	FEEDER CIRCUIT BREAKERS	2P, 240V, 50A
7	1	TYPE 1 SURGE PROTECTION DEVICE	20,000A RATED
8	1	SELECTOR SWITCH (ON-OFF-AUTO)	240V, 10A
9	2	POWER DISTRIBUTION LUGS OR BLOCKS	
		MOUNTING BRACKETS OR SCREW STUDS	

2			
1			
Rev.	Date	Description	Approved
<b>NORTH CAROLINA DEPARTMENT OF TRANSPORTATION</b> ROADWAY DESIGN LIGHTING/ELECTRICAL SECTION <b>CONTROL PANEL DETAILS</b>  SHEET 1 OF 3 PANEL SCHEMATIC  HAYWOOD COUNTY			
Drawn By:	RGH	Approved By:	Dwg No.:

I9-DEC-2023 2:40 PM Projects\HB0002\Lighting\Plan SP\_Est\Plan\HB0002\_LE\_PSH\_E4.dgn  
 rghall RD-329781L