


CLEARING AND GRUBBING
EROSION CONTROL FOR
CONSTRUCTION SHEET 4

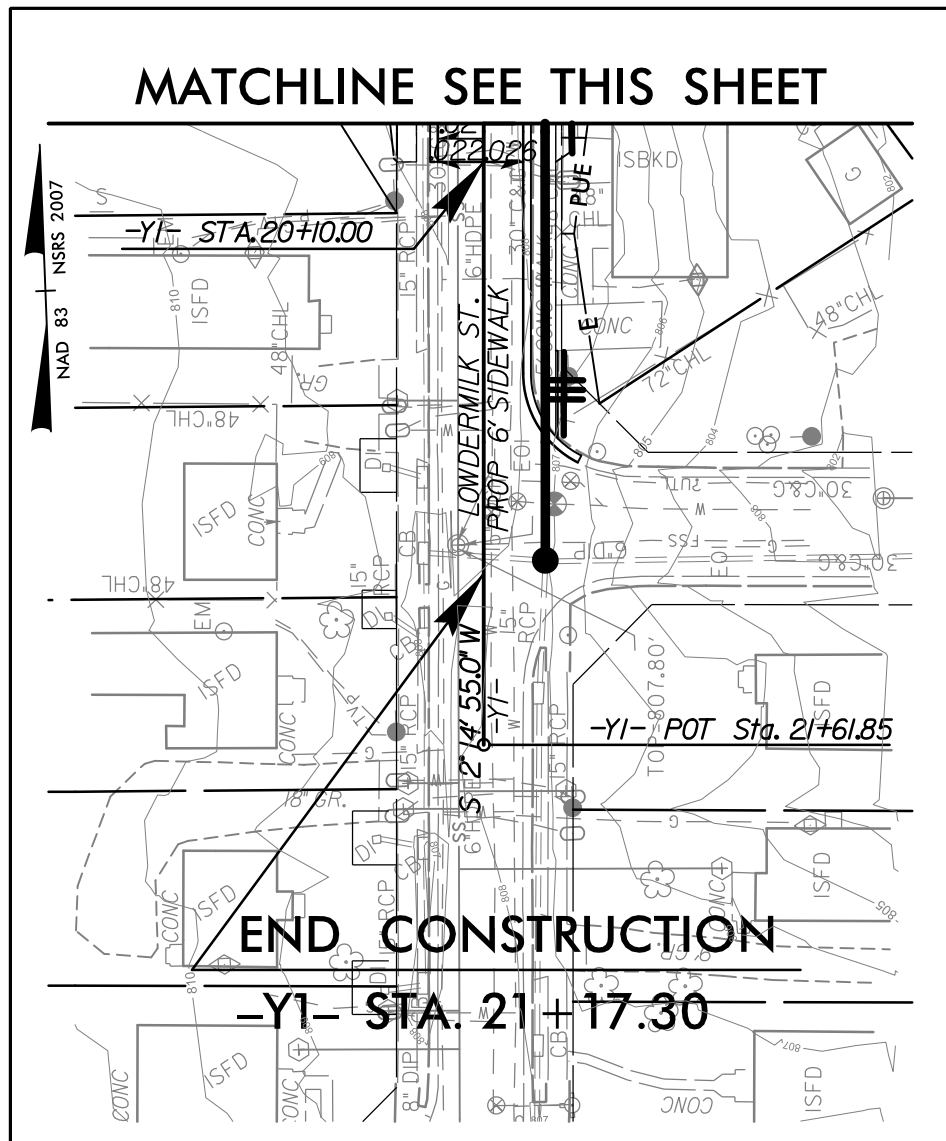
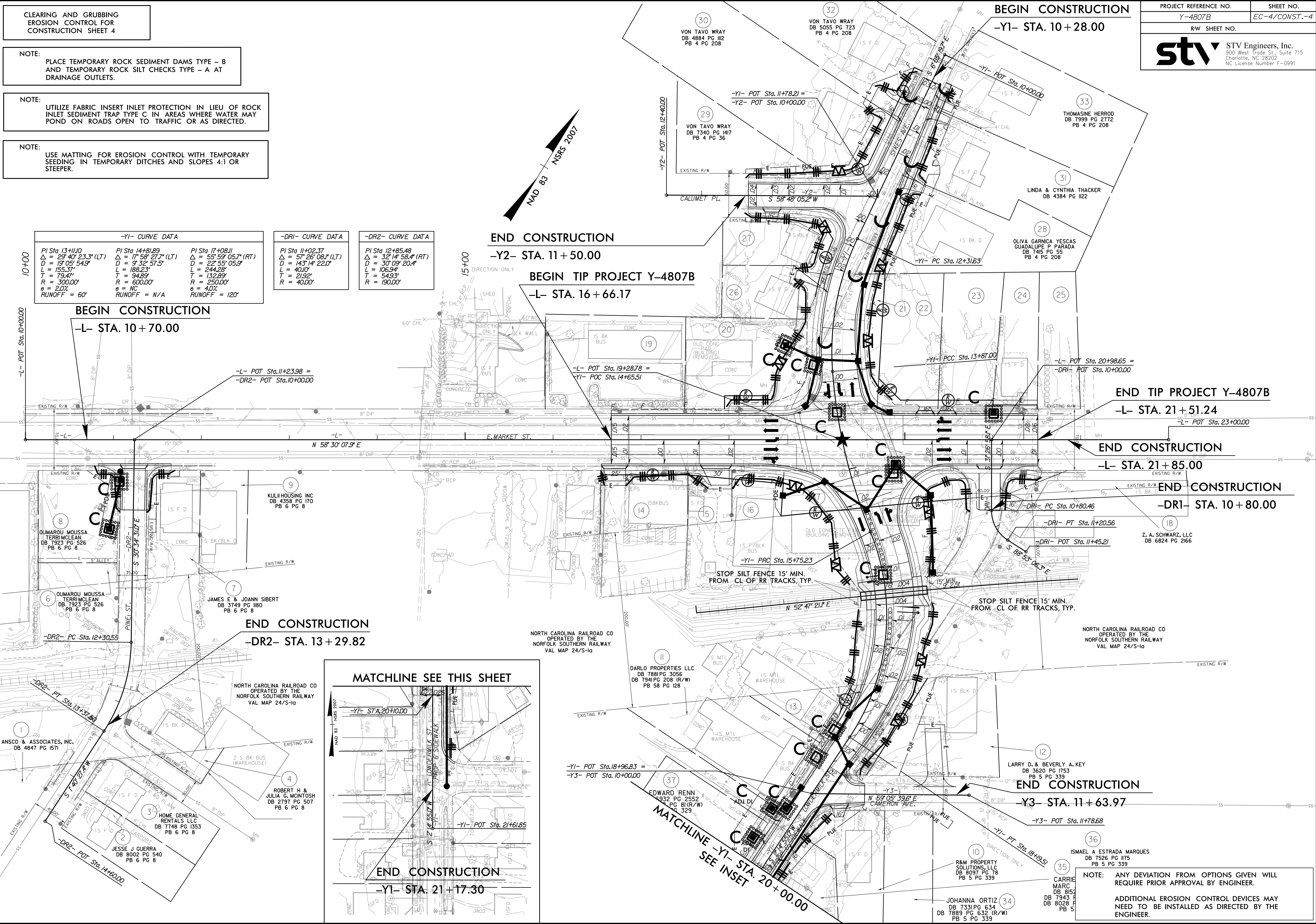
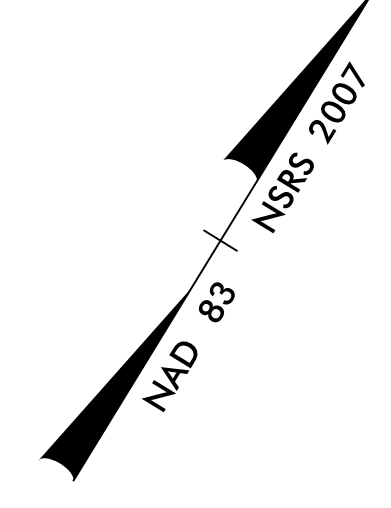
NOTE:
PLACE TEMPORARY ROCK SEDIMENT DAMS TYPE - B
AND TEMPORARY ROCK SILT CHECKS TYPE - A AT
DRAINAGE OUTLETS.

NOTE:
UTILIZE FABRIC INSERT INLET PROTECTION IN LIEU OF ROCK
INLET SEDIMENT TRAP TYPE C IN AREAS WHERE WATER MAY
POND ON ROADS OPEN TO TRAFFIC OR AS DIRECTED.

NOTE:
USE MATTING FOR EROSION CONTROL WITH TEMPORARY
SEEDING IN TEMPORARY DITCHES AND SLOPES 4:1 OR
STEEPER.

PROJECT REFERENCE NO. Y-4807B	SHEET NO. EC-4/CONST.-4
RW SHEET NO.	
 STV Engineers, Inc. 900 West Trade St., Suite 715 Charlotte, NC 28202 NC License Number F-0991	

-Y1- CURVE DATA			-DRI- CURVE DATA		-DR2- CURVE DATA	
PI Sta 13+11.00 Δ = 29° 40' 23.3" (LT) D = 19' 05' 54.9" L = 155.37' T = 79.47' R = 300.00' e = 2.0% RUNOFF = 60'	PI Sta 14+81.89 Δ = 17° 58' 27.7" (LT) D = 9' 32' 57.5" L = 188.23' T = 94.89' R = 600.00' e = NC RUNOFF = N/A	PI Sta 17+08.11 Δ = 55° 59' 05.7" (RT) D = 22' 55' 05.9" L = 244.28' T = 132.89' R = 250.00' e = 4.0% RUNOFF = 120'	PI Sta 11+02.37 Δ = 57° 26' 08.1" (LT) D = 143' 14' 22.0" L = 401.0' T = 219.2' R = 40.00'	PI Sta 12+85.48 Δ = 32° 14' 58.4" (RT) D = 30' 09' 20.4" L = 106.94' T = 54.93' R = 150.00'		



3/5/2024
R:\Roadway\Proj\EC\Y4807B_ec_pst04_c&g.dgn
mbdelacruz

NOTE:
ANY DEVIATION FROM OPTIONS GIVEN WILL
REQUIRE PRIOR APPROVAL BY ENGINEER.

ADDITIONAL EROSION CONTROL DEVICES MAY
NEED TO BE INSTALLED AS DIRECTED BY THE
ENGINEER.