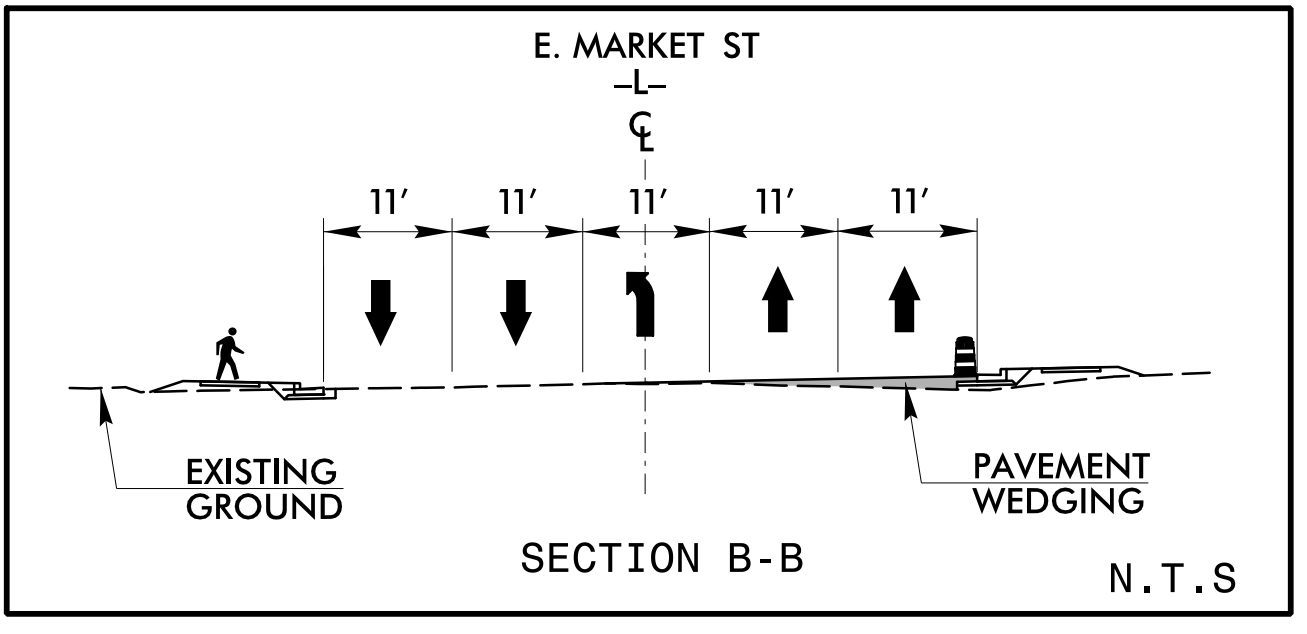


NOTES:
SEE SHEET TMP-7 FOR DETOUR ROUTE AND
SIGNING FOR LOWDERMILK STREET CLOSURE

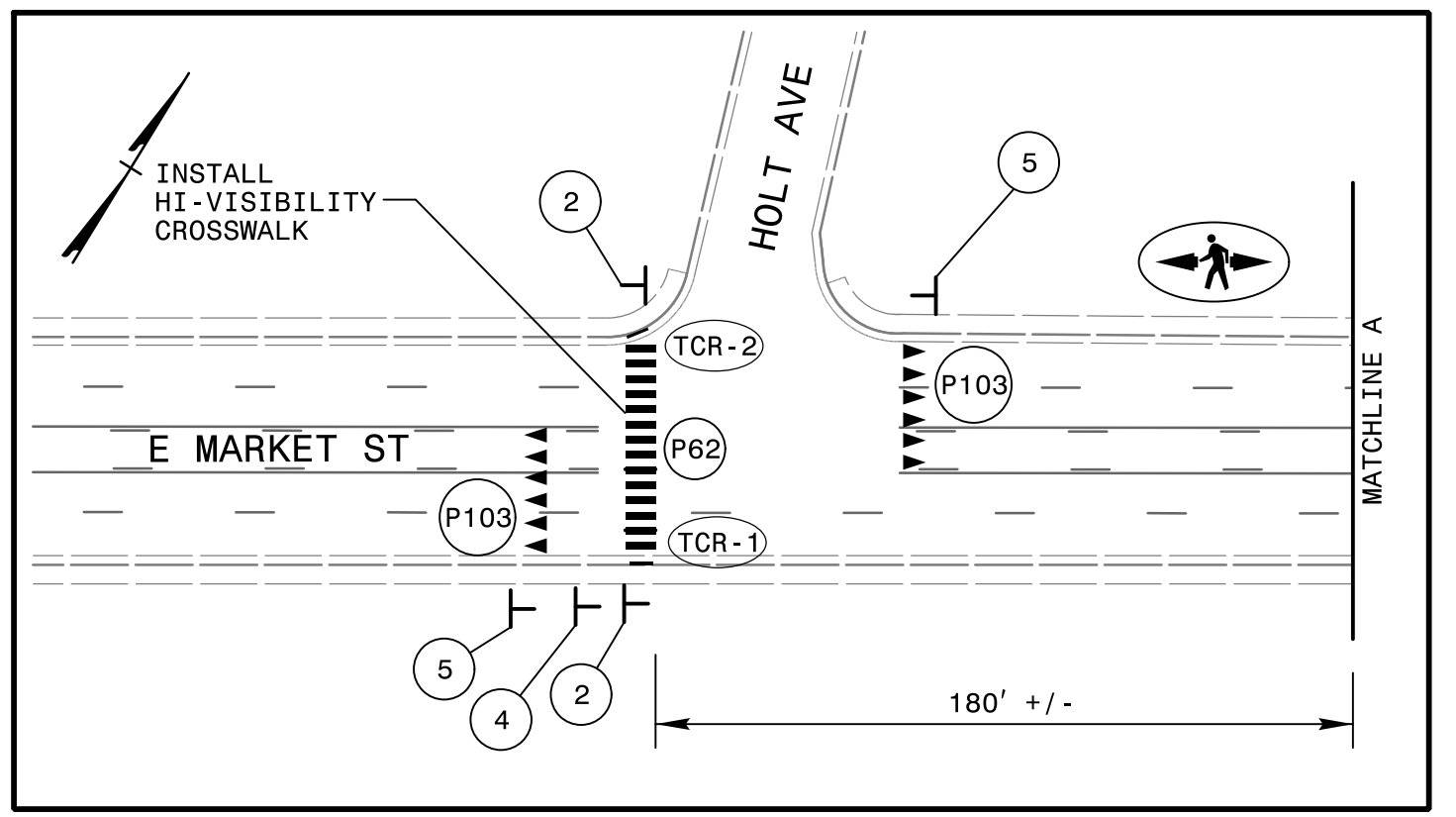
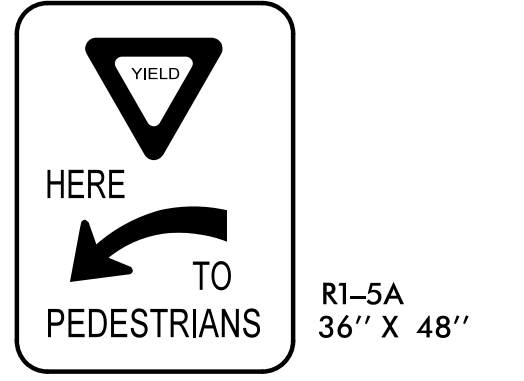
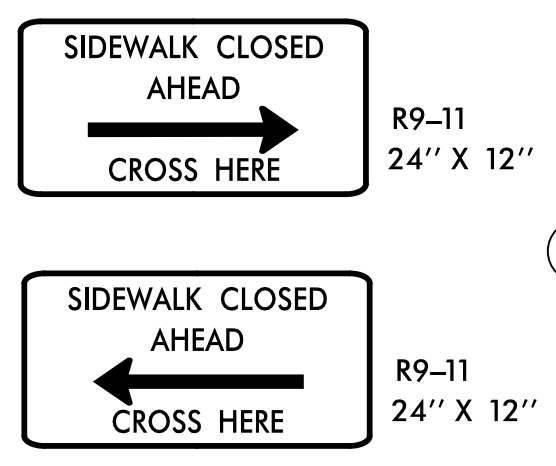
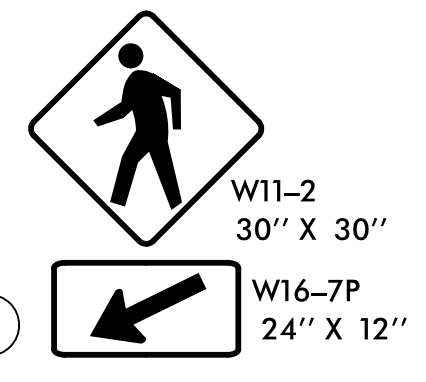
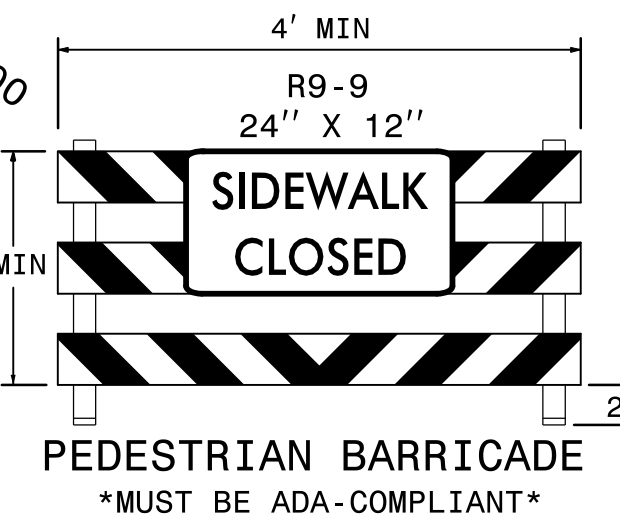
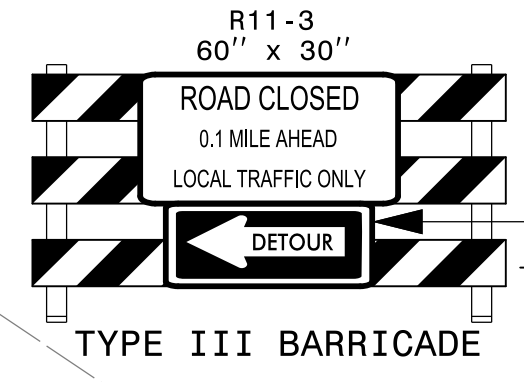
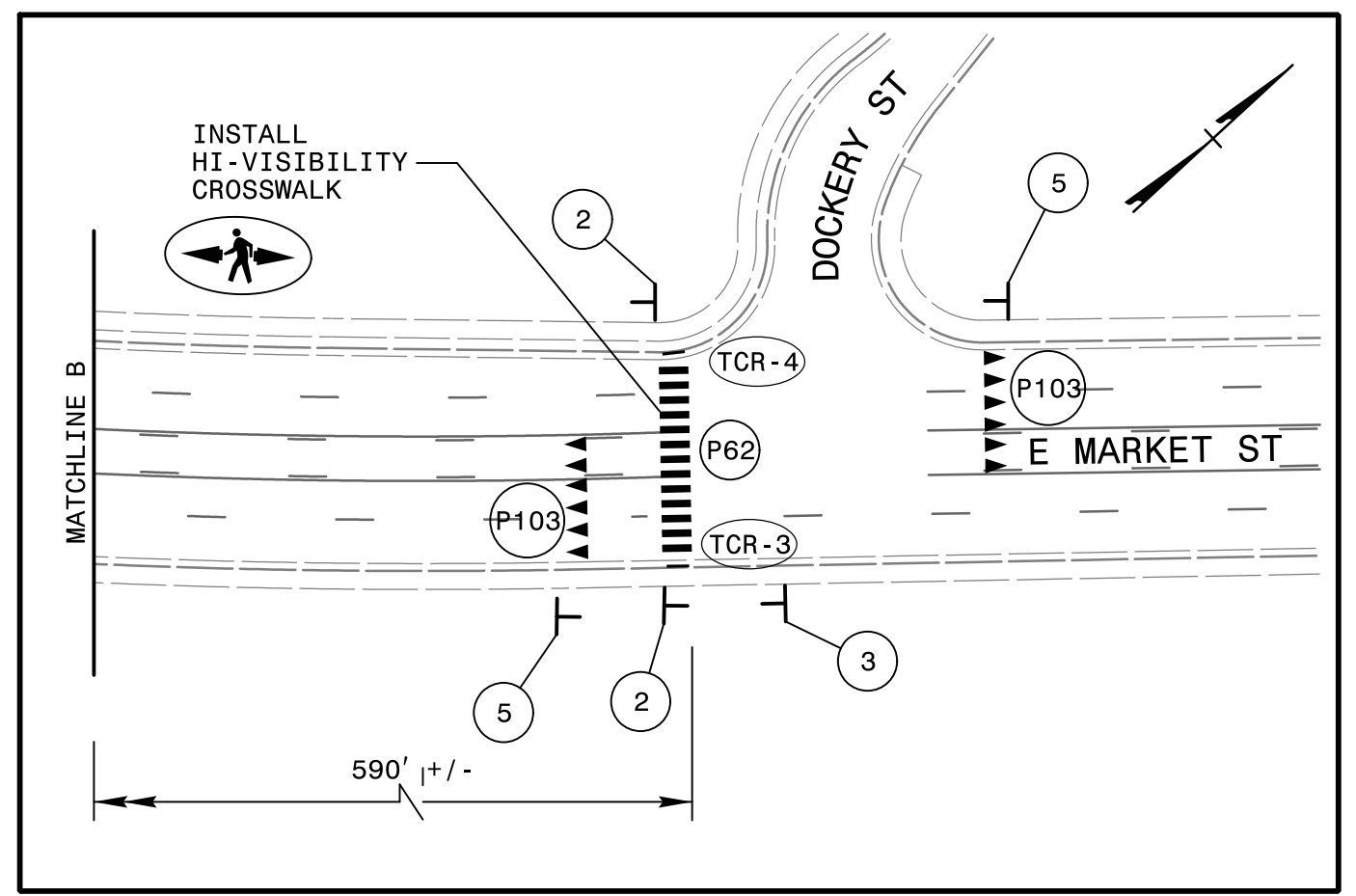
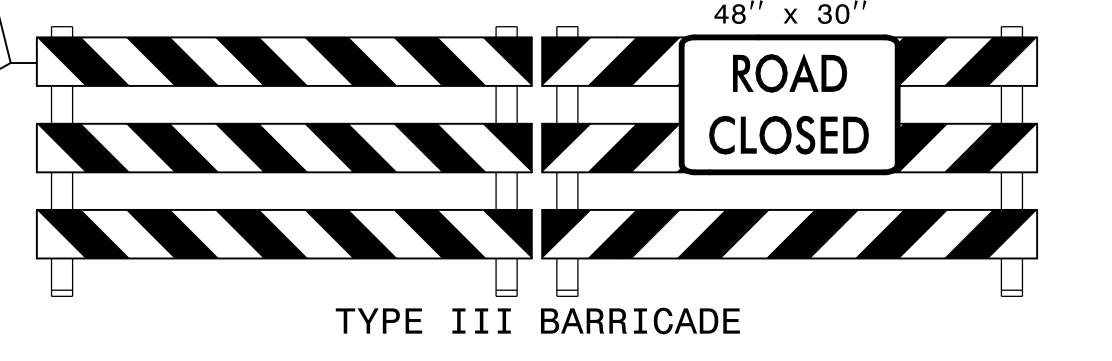
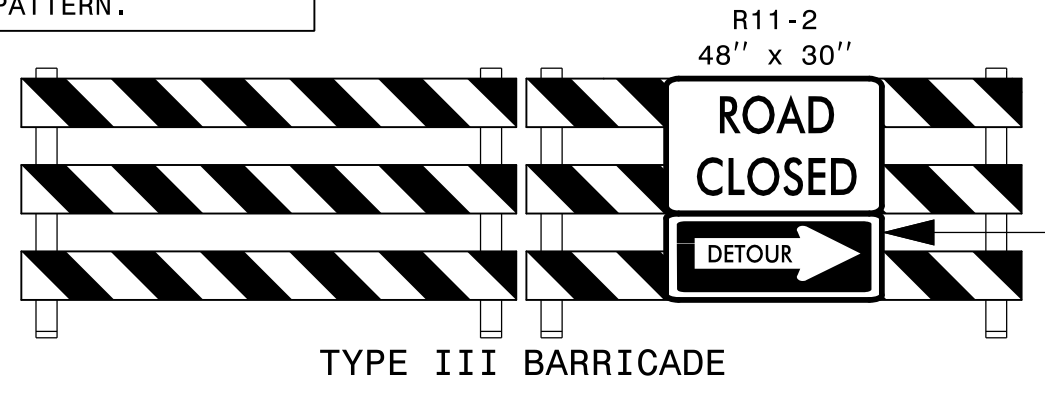


CHANGEABLE MESSAGE SIGN

| | |
|--|---|
| MESSAGE NO. 1 LOWDER-MILK ST. CLOSED | MESSAGE NO. 2 USE PINE ST. DETOUR |
|--|---|

CHANGEABLE MESSAGE SIGN

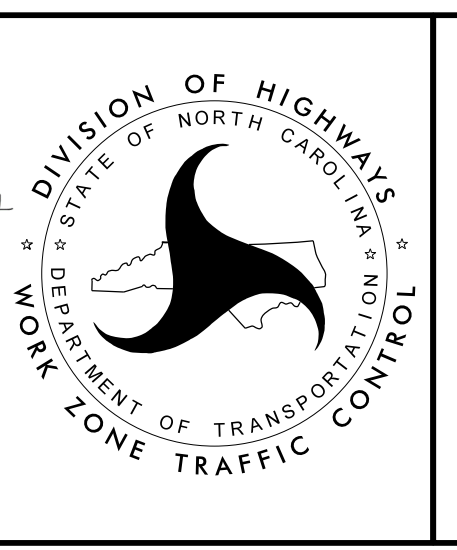
| | |
|--|-----------------------------------|
| MESSAGE NO. 1 LOWDER-MILK ST. CLOSED | MESSAGE NO. 2 FOLLOW DETOUR |
|--|-----------------------------------|



SEE SHEET TMP-1A FOR TEMPORARY PAVEMENT MARKING LEGEND
AUDIBLE WARNING DEVICE TO BE ADDED 100' BEFORE EACH PEDESTRIAN BARRICADE.

APPROVED: _____
DATE: 3/6/2024

SEAL



stv STV Engineers, Inc.
900 West Trade St., Suite 715
Charlotte, NC 28202
NC License Number F-0991

PHASE IV DETAIL

3/5/2024
c:\projects\trafficcontrol\tcp_sht\Y4807B_TMP_sht-08.dgn
mdg@stviz