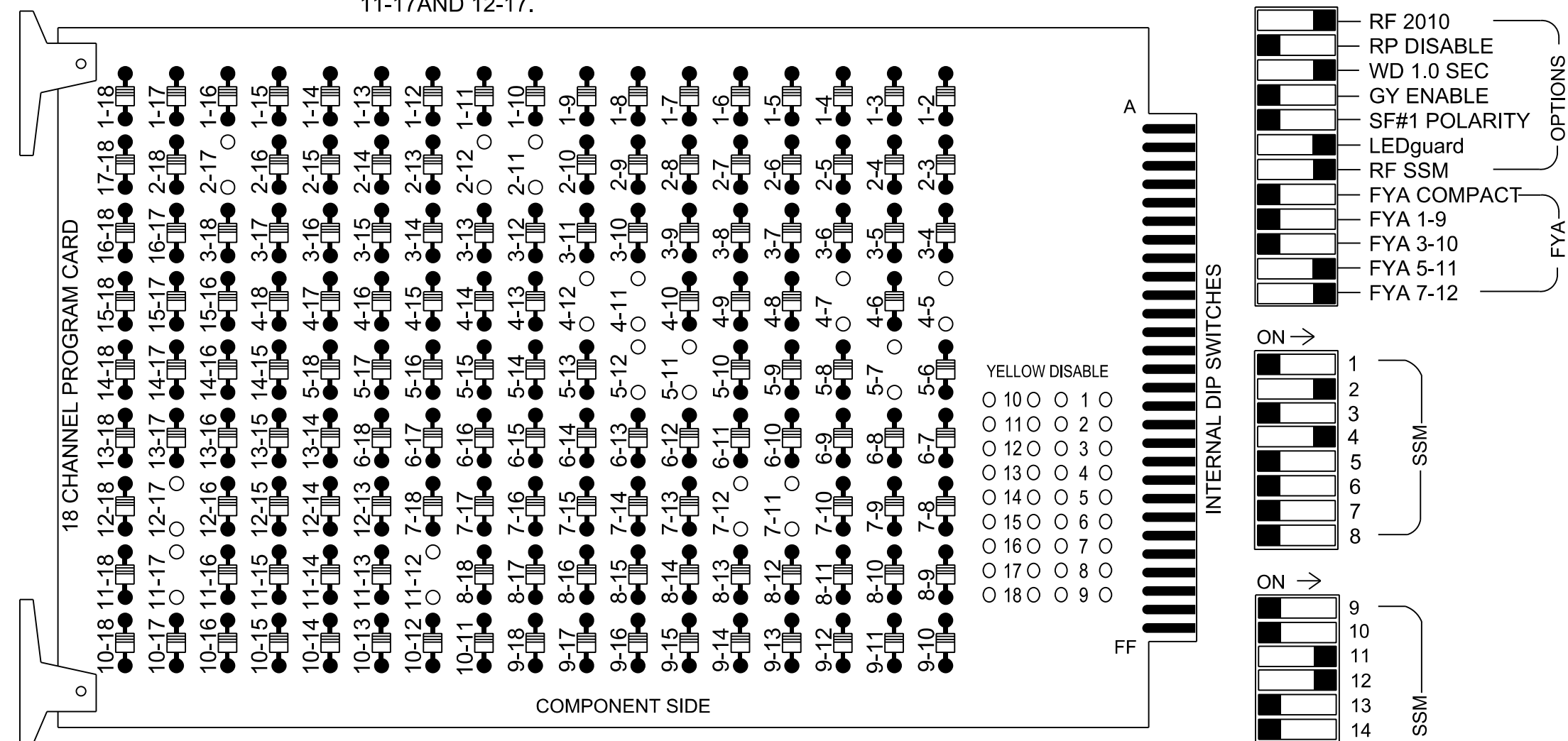


18 CHANNEL IP CONFLICT MONITOR PROGRAMMING DETAIL

(remove jumpers and set switches as shown)

REMOVE DIODE JUMPERS 2-11, 2-12, 2-17, 4-5, 4-7, 4-11, 4-12, 5-7, 5-11, 5-12, 7-11, 7-12, 11-12, 11-17 AND 12-17.



REMOVE JUMPERS AS SHOWN

NOTES:

1. Card is provided with all diode jumpers in place. Removal of any jumper allows its channels to run concurrently.
2. Ensure jumpers SEL2-SEL5 and SEL9 are present on the monitor board.
3. Ensure that the Red Enable is active at all times during normal operation.
4. Connect serial cable from conflict monitor to comm. port 1 of 2070 controller. Ensure conflict monitor communicates with 2070.

NOTES

1. To prevent "flash-conflict" problems, insert red flash program blocks for all unused vehicle load switches in the output file. The installer shall verify that signal heads flash in accordance with the signal plan.
2. Return controller to Factory Defaults before programming per this electrical detail.
3. Program controller to start up in phase 2 Green No Walk.
4. If this signal will be managed by an ATMS software, enable controller and detector logging for all detectors used at this location.

EQUIPMENT INFORMATION

Controller.....2070LX
 Cabinet.....332 w/ Aux
 Software.....Q-Free MAXTIME
 Cabinet Mount.....Base
 Output File Positions.....18 With Aux. Output File
 Load Switches Used.....S2, S5, S7, S10, AUX S3, AUX S4, AUX S5
 Phases Used.....2, 4, 7
 Overlap "1".....NOT USED
 Overlap "2".....NOT USED
 Overlap "3".....*
 Overlap "4".....*
 Overlap "5".....*
 Overlap "7".....*

*See overlap programming detail on sheet 2.

SIGNAL HEAD HOOK-UP CHART

LOAD SWITCH NO.	S1	S2	S3	S4	S5	S6	S7	S8	S9	S10	S11	S12	AUX S1	AUX S2	AUX S3	AUX S4	AUX S5	AUX S6
CMU CHANNEL NO.	1	2	13	3	4	14	5	6	15	7	8	16	9	10	17	11	12	18
PHASE	1	2	2 PED	3	4	4 PED	OL7	6	6 PED	7	8	8 PED	OL1	OL2	OL5	OL3	OL4	SPARE
SIGNAL HEAD NO.	NU	21	22	NU	41,42,43	NU	72*	NU	NU	71*	NU	NU	NU	NU	23*	72*	71*	NU
RED		128	128		101										A111			
YELLOW		129	129				*		*									
GREEN		130																
RED ARROW															A114	A101		
YELLOW ARROW					102										A112	A115	A102	
FLASHING YELLOW ARROW															A113	A116	A103	
GREEN ARROW		130			103		133			124								

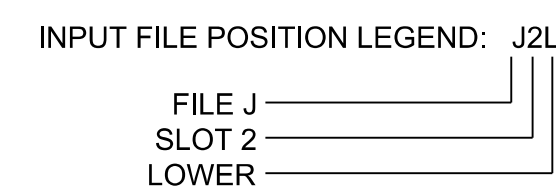
NU = Not Used

- * Denotes install load resistor. See load resistor installation detail this sheet.
- * See pictorial of head wiring in detail this sheet.

INPUT FILE CONNECTION & PROGRAMMING CHART

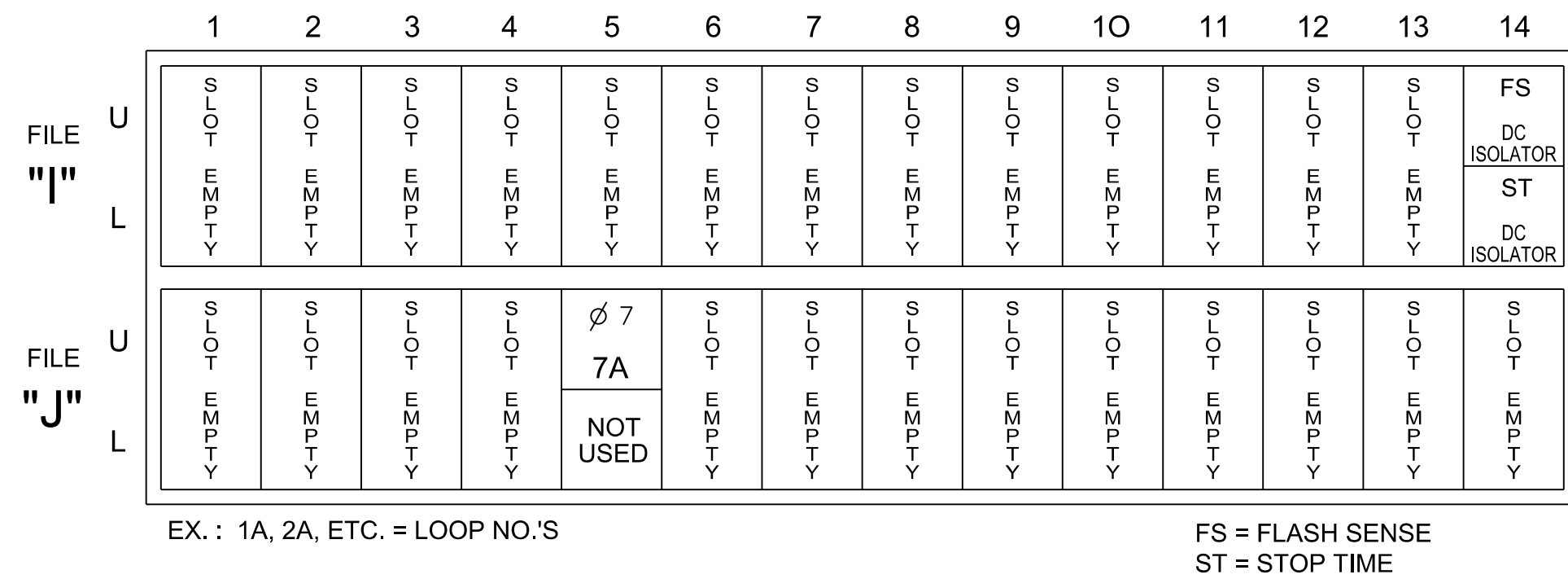
LOOP NO.	LOOP TERMINAL	INPUT FILE POS.	PIN NO.	INPUT POINT	DETECTOR NO.	CALL PHASE	DELAY TIME	EXTEND TIME	EXTEND	ADDED INITIAL	CALL	DELAY DURING GREEN
7A	TB5-5,6	J5U	57	19	21*	7	15		X		X	

* For the detector to work as shown on the signal design plan, see the vehicle detector setup programming detail for alternate phasing on sheet 2.



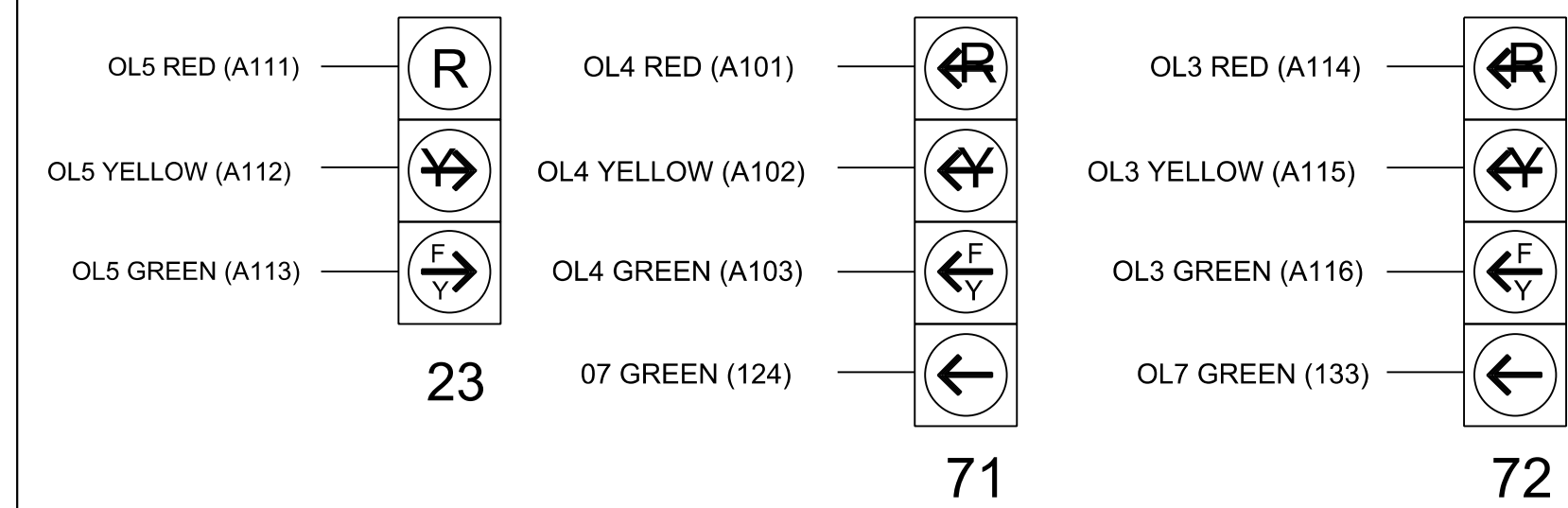
INPUT FILE POSITION LAYOUT

(front view)



FYA SIGNAL WIRING DETAIL

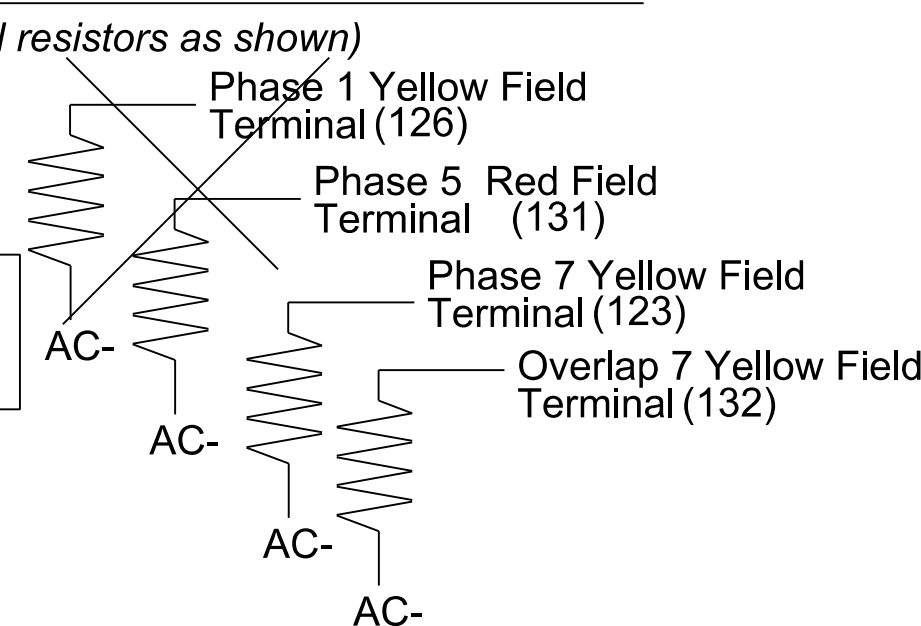
(wire signal heads as shown)



LOAD RESISTOR INSTALLATION DETAIL

ACCEPTABLE VALUES	
Value (ohms)	Wattage
1.5K - 1.9K	25W (min)
2.0K - 3.0K	10W (min)

Remove Phase 1 Yellow Field Terminal (126) and Phase 5 Red Field Terminal (131), if present.



SPECIAL DETECTOR NOTE

Install a video detection system for vehicle detection for zones. 2A, 4A and 7A. Perform installation according to manufacturer's directions and NCDOT engineer-approved mounting locations to accomplish the detection schemes shown on the Signal Design Plans.

For Detection Zone 7A, the equipment placement and slots are typical for a NCDOT installation. Inputs associated with these slots are compatible with time of day instructions located on sheet 2 of this electrical detail.

THIS ELECTRICAL DETAIL IS FOR THE SIGNAL DESIGN: 09-1100T5
 DESIGNED: February 2024
 SEALED: February 12, 2024
 REVISED:

Signal Upgrade - Temporary Design 5 (TMP Phase III Step 3) - Electrical Detail - Sheet 1 of 2

Electrical and Programming Details For: US 158 EB (Reidsville Rd.) at SR 2014 (Vance Rd.)

Division 9 Forsyth County Walkertown
 PLAN DATE: February 2024 REVIEWED BY: DT Sears
 PREPARED BY: WP Erickson-Jones REVIEWED BY:

REVISIONS: INIT. DATE

750 N. Greenfield Pkwy, Gamer, NC 27529
 (919) 878-8560
 8801 Six Forks Road Suite 700 | Raleigh, North Carolina 27615-2965
 NC License No. F-0112
 www.rk.com
 Responsive People | Creative Solutions

DOCUMENT NOT CONSIDERED FINAL UNLESS ALL SIGNATURES COMPLETED

SEAL NORTH CAROLINA PROFESSIONAL ENGINEER PORTER JONES
 SEAL 056142
 DocuSigned by: Porter Jones 2/12/2024
 DATE DATE
 SIG. INVENTORY NO. 09-1100T5