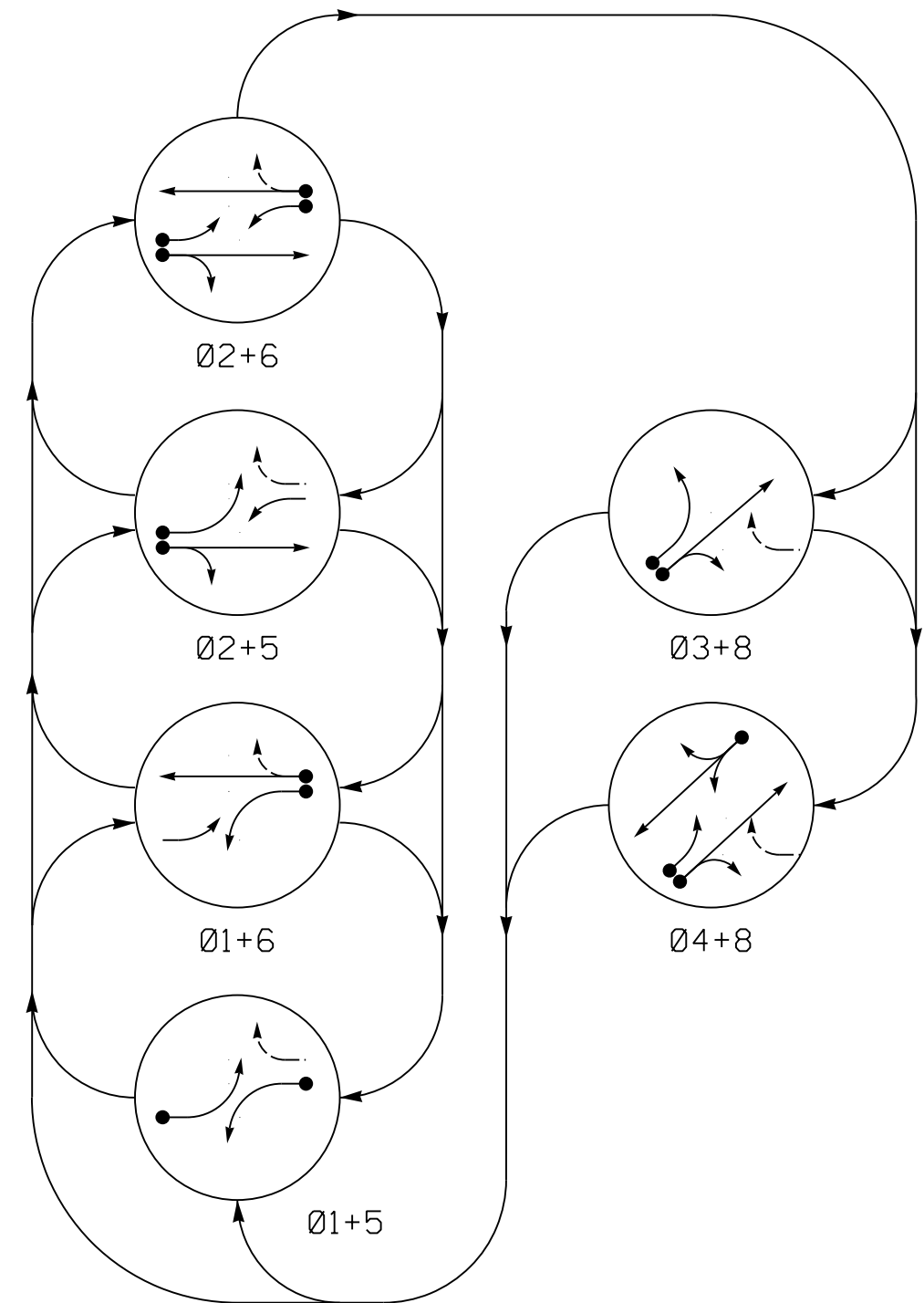


PHASING DIAGRAM



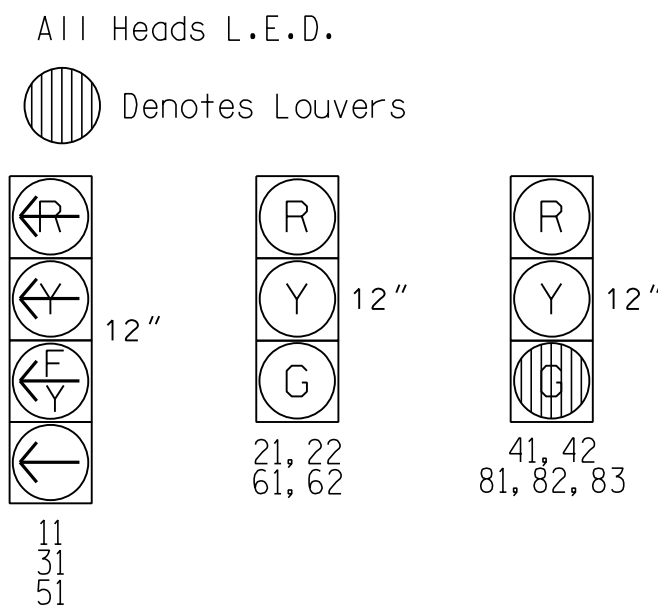
PHASING DIAGRAM DETECTION LEGEND

- DETECTED MOVEMENT
- UNDETECTED MOVEMENT (OVERLAP)
- UNSIGNALIZED MOVEMENT
- PEDESTRIAN MOVEMENT

TABLE OF OPERATION

SIGNAL FACE	PHASE					
	Ø 1+5	Ø 1+6	Ø 2+5	Ø 2+6	Ø 3+8	Ø 4+8
11	←	←	←	←	←	←
21, 22	R	R	G	G	R	Y
31	←	←	←	←	←	←
41, 42	R	R	R	R	R	G
51	←	←	←	←	←	←
61, 62	R	G	R	G	R	Y
81, 82, 83	R	R	R	R	G	G

SIGNAL FACE I.D.



MAXTIME DETECTOR INSTALLATION CHART

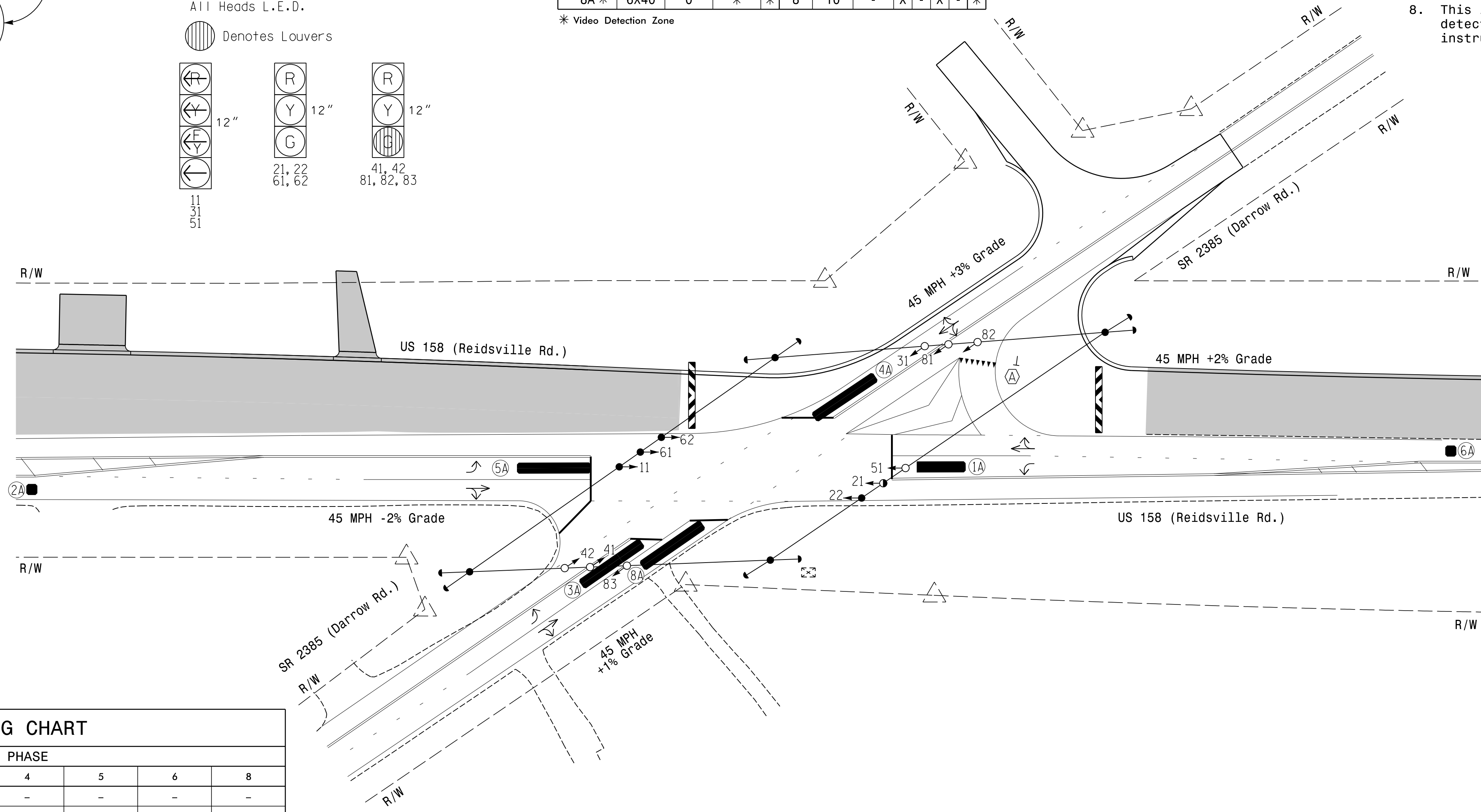
ZONE	SIZE (FT)	DISTANCE FROM STOPBAR (FT)	TURNS	NEW LOOP	PROGRAMMING							
					CALL PHASE	DELAY TIME	EXTEND TIME	EXTEND	ADDED INITIAL	CALL	DELAY DURING GREEN	NEW CARD
1A *	6X40	0	*	*	1	15	-	X	-	X	-	*
2A *	6X6	300	*	*	2	-	-	X	X	X	-	*
3A *	6X40	0	*	*	3	15	-	X	-	X	-	*
4A *	6X40	0	*	*	8	3	-	X	-	X	-	*
5A *	6X40	0	*	*	5	15	-	X	-	X	-	*
6A *	6X6	300	*	*	2	3	-	X	-	X	X	*
8A *	6X40	0	*	*	6	-	-	X	X	X	-	*

* Video Detection Zone

6 Phase Fully Actuated (Isolated)

NOTES

- Refer to "Roadway Standard Drawings NCDOT" dated January 2024 and "Standard Specifications for Roads and Structures" dated January 2024.
- Do not program signal for late night flashing operation unless otherwise directed by the Engineer.
- Omit phase 3 during phase 4 on.
- Phase 1 and/or phase 5 may be lagged.
- Reposition existing signal heads numbered 81 and 82.
- Modify existing signal head 21.
- Set all detector units to presence mode.
- This intersection uses video detection. Install detectors according to the manufacturer's instructions to achieve the desired detection.



LEGEND

- | PROPOSED | EXISTING |
|--|----------|
| ○ Traffic Signal Head | ● N/A |
| ○ Modified Signal Head | ○ N/A |
| ○ Sign | ○ N/A |
| ○ Pedestrian Signal Head With Push Button & Sign | ○ N/A |
| ○ Signal Pole with Guy | ○ N/A |
| ○ Signal Pole with Sidewalk Guy | ○ N/A |
| ○ Inductive Loop Detector | ○ N/A |
| ○ Controller & Cabinet | ○ N/A |
| ○ Junction Box | ○ N/A |
| ○ 2-in Underground Conduit | ○ N/A |
| ○ Right of Way | ○ N/A |
| ○ Directional Arrow | ○ N/A |
| ○ Construction Zone | ○ N/A |
| ○ Video Detection Zone | ○ N/A |
| ○ Barricade | ○ N/A |
| ○ "YIELD" Sign (R1-2) | ○ N/A |

MAXTIME TIMING CHART

FEATURE	PHASE							
	1	2	3	4	5	6	8	
Walk *	-	-	-	-	-	-	-	
Ped Clear *	-	-	-	-	-	-	-	
Min Green	7	12	7	7	7	12	7	
Passage *	2.0	6.0	2.0	2.0	2.0	6.0	2.0	
Max I *	15	100	20	30	15	100	30	
Yellow Change	3.0	4.7	3.0	4.3	3.0	4.7	4.3	
Red Clear	3.5	2.2	1.9	2.4	3.7	2.2	2.4	
Added Initial *	-	2.5	-	-	-	2.5	-	
Maximum Initial *	-	34	-	-	-	34	-	
Time Before Reduction *	-	15	-	-	-	15	-	
Time To Reduce *	-	30	-	-	-	30	-	
Minimum Gap	-	3.0	-	-	-	3.0	-	
Advance Walk	-	-	-	-	-	-	-	
Non Lock Detector	X	-	X	X	X	-	X	
Vehicle Recall	-	MIN RECALL	-	-	-	MIN RECALL	-	
Dual Entry	-	-	-	X	-	-	X	

* These values may be field adjusted. Do not adjust Min Green and Extension times for phases 2 and 6 lower than what is shown. Min Green for all other phases should not be lower than 4 seconds.

Signal Upgrade - Temporary Design 2 (TMP Phase I Step 2)

RK&K
 PL (919) 878-8560
 8801 Six Forks Road Suite 700 | Raleigh, North Carolina 27615-2965
 NC License No. F-0112
 www.rk.com
 Responsive People | Creative Solutions

Prepared for the Offices of:
 TRANSPORTATION MOBILITY AND SAFETY DIVISION
 DEPARTMENT OF TRANSPORTATION
 NORTH CAROLINA
 SIGNAL DESIGN SECTION

US 158 (Reidsville Rd.) at SR 2385 (Darrow Rd.)
 Division 9 Forsyth County Walkertown
 PLAN DATE: February 2024 REVIEWED BY: WP Erickson-Jones
 PREPARED BY: H Townsend REVIEWED BY:

REVISIONS	INIT.	DATE

DOCUMENT NOT CONSIDERED FINAL UNLESS ALL SIGNATURES COMPLETED

SEAL
 NORTH CAROLINA PROFESSIONAL ENGINEER
 SEAL 056142
 W. PORTER JONES
 PORTER JONES
 2/12/2024
 SIGNATURE DATE
 SIG. INVENTORY NO. 09-099612

2/12/2024 6:11:00 PM C:\Users\jones1\OneDrive\Documents\Signal Design\23.0\sig_den_XXXXXXX.dgn wp1 Jones