

Location and Surveys

PROJECT SURVEYOR

ANGELES RANGEL SANDOVAL & JULIO SANDOVAL GARCIA
DB 3475 PG 3436
PB 50 PG 116

JULIO SANDOVAL GARCIA & ANGELES PAULINA SANDOVAL
DB 3603 PG 4291
PB 50 PG 116

MANSFIELD CATO INVESTMENTS LLC
DB 2737 PG 2179
PB 50 PG 116

GREGORY BOCK AND WIFE, KAYLA LOMBARDI
DB 3470 PG 1598
PB 50 PG 116

CONSTANCE C LOWERY
DB 3464 PG 2363
PB 50 PG 116

ALVIN FREEMAN JR. & WIFE, JAMEELAH NEWTON FREEMAN
DB 3375 PG 3780
PB 50 PG 116

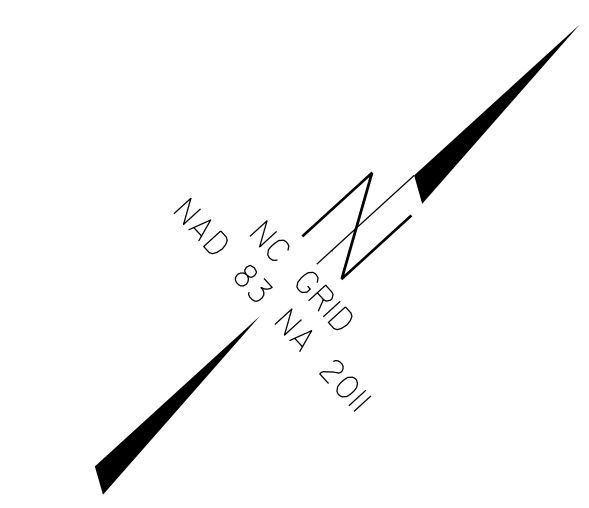
MCKELVIN L ROBERTS
DB 3240 PG 1408
PB 50 PG 116

VENABLE & SON LLC
DB 2591 PG 807
PB 50 PG 116

VENABLE & SON LLC
DB 2591 PG 807
PB 50 PG 116

DOCUMENT NOT CONSIDERED FINAL UNLESS ALL SIGNATURES COMPLETED

-Y23-	-Y24-	-D5-
PI Sta 14+77.82 Δ = 42° 08' 08.4" (LT) D = 11° 27' 33.0" L = 367.70' T = 192.61' R = 500.00' SE = 0.04 DS = 35 MPH	PI Sta 13+04.32 Δ = 0° 17' 21.9" (RT) D = 0° 02' 51.2" L = 608.65' T = 304.32' R = 120,490.00' SE = NC DS = 55 MPH	PI Sta 18+12.85 Δ = 28° 38' 20.09" (RT) D = 7° 09' 43.1" L = 399.87' T = 204.21' R = 800.00' SE = 0.06 DS = 45 MPH
PI Sta 22+29.54 Δ = 72° 45' 32.8" (LT) D = 19° 05' 54.9" L = 380.97' T = 221.01' R = 300.00' SE = 0.06 DS = 30 MPH	PI Sta 11+10.20 Δ = 90° 00' 00.0" (LT) D = 136° 25' 06.7" L = 65.97' T = 42.00' R = 42.00' SE = 0.02 DS = 15 MPH	PI Sta 13+79.63 Δ = 89° 37' 55.7" (RT) D = 136° 25' 06.7" L = 65.70' T = 41.73' R = 42.00' SE = 0.02 DS = 15 MPH



I, Michael L. Motsinger, certify that the right of way and permanent easement monumentation for this project shown herein was completed under my direct and responsible charge from an actual survey made under my supervision; that all horizontal closures had a minimum ratio of precision of 1:10,000 (Class A). Field work was performed from March 2021 to November 2021, and all coordinates are based on NAD83/2011; That this survey was performed to meet the requirements of 21NCA 56.1600 as applicable.

This 19th day of December, 2023.

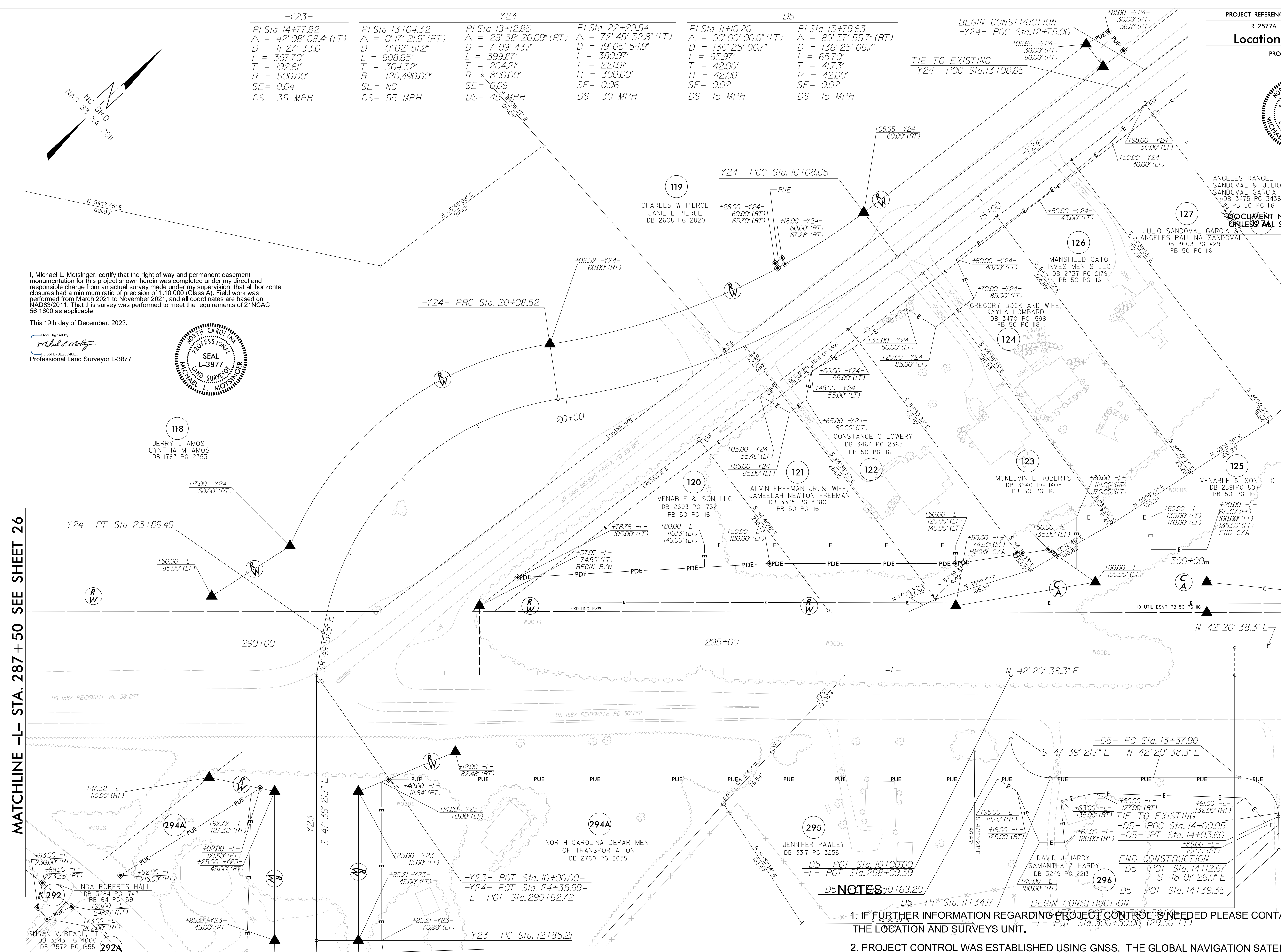
Designed by: *Michael L. Motsinger*

Professional Land Surveyor L-3877

MATCHLINE -L- STA. 287 + 50 SEE SHEET 26

MATCHLINE -Y23- STA. 13 + 00 SEE SHEET 30

MATCHLINE -L- STA. 301 + 00 SEE SHEET 28



- NOTES:**
- IF FURTHER INFORMATION REGARDING PROJECT CONTROL IS NEEDED PLEASE CONTACT THE LOCATION AND SURVEYS UNIT.
 - PROJECT CONTROL WAS ESTABLISHED USING GNSS, THE GLOBAL NAVIGATION SATELLITE SYSTEM.
 - RIGHT OF WAY MONUMENTATION ESTABLISHED _____ TO _____.

I:\DEC-2023\14371\Winston_Ruths Computer\Real\2577A\Right of Way\Contr-olSheets.231214\Files Pulled 2023-12-13\N-R-2577A_rdy_psh27.dgn
 S:\Users\motsinger\OneDrive\Documents\2577A\Right of Way\Contr-olSheets.231214\Files Pulled 2023-12-13\N-R-2577A_rdy_psh27.dgn
 AT 11:53:24 AM 12/13/2023
 11/13/2023 11:53:24 AM