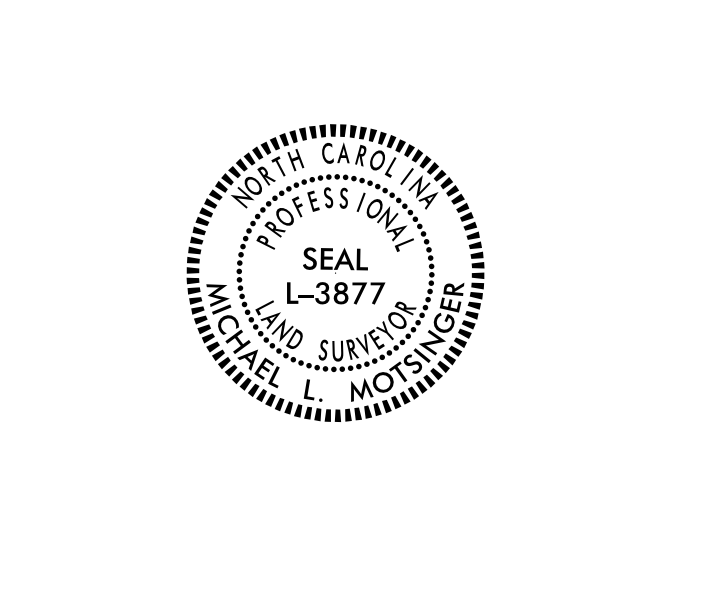


Location and Surveys

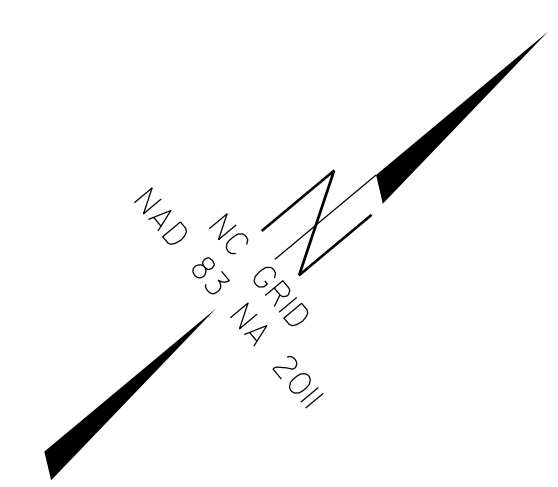
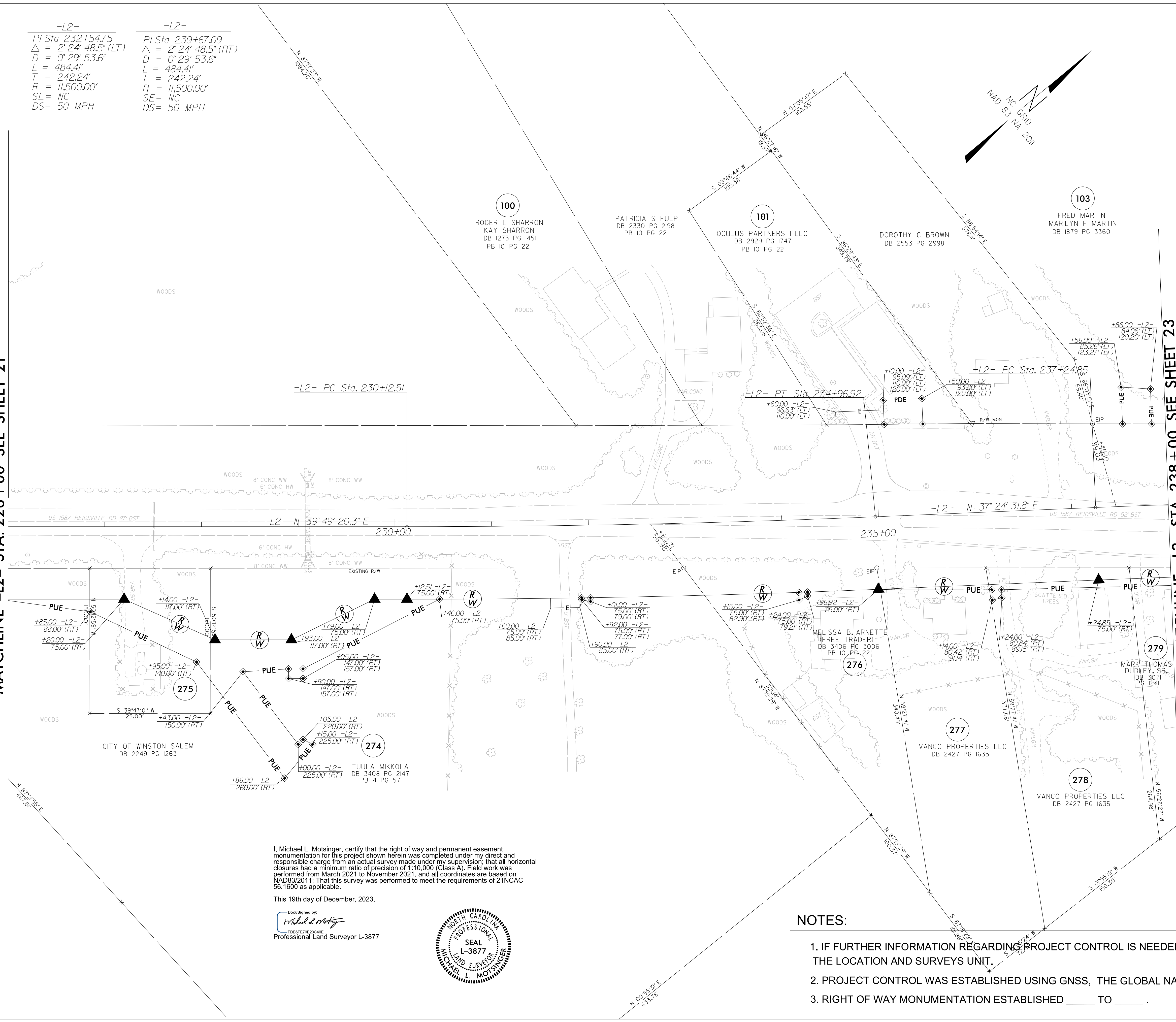


DOCUMENT NOT CONSIDERED FINAL UNLESS ALL SIGNATURES COMPLETED

-L2-	-L2-
PI Sta. 232+54.75	PI Sta. 239+67.09
Δ = 2° 24' 48.5" (LT)	Δ = 2° 24' 48.5" (RT)
D = 0° 29' 53.6"	D = 0° 29' 53.6"
L = 484.4'	L = 484.4'
T = 242.24'	T = 242.24'
R = 11,500.00'	R = 11,500.00'
SE = NC	SE = NC
DS = 50 MPH	DS = 50 MPH

MATCHLINE -L2- STA. 226 + 00 SEE SHEET 21

MATCHLINE -L2- STA. 238 + 00 SEE SHEET 23



REVISIONS

IS:\DEC-2023\1331\Winston\Rights Computer\Reel\R-2577A\Right of Way\Control\Sheets\231214\Files Pulled 2023-12-13\N-2577A\_rdy\_psh22.dgn AT LS-3286081

I, Michael L. Molsinger, certify that the right of way and permanent easement monumentation for this project shown herein was completed under my direct and responsible charge from an actual survey made under my supervision; that all horizontal closures had a minimum ratio of precision of 1:10,000 (Class A). Field work was performed from March 2021 to November 2021, and all coordinates are based on NAD83/2011; That this survey was performed to meet the requirements of 21NCAC 56.1600 as applicable.

This 19th day of December, 2023.

DocuSigned by:  
  
 F0B8F7E23C4DE  
 Professional Land Surveyor L-3877



NOTES:

1. IF FURTHER INFORMATION REGARDING PROJECT CONTROL IS NEEDED PLEASE CONTACT THE LOCATION AND SURVEYS UNIT.
2. PROJECT CONTROL WAS ESTABLISHED USING GNSS, THE GLOBAL NAVIGATION SATELLITE SYSTEM.
3. RIGHT OF WAY MONUMENTATION ESTABLISHED \_\_\_\_ TO \_\_\_\_.