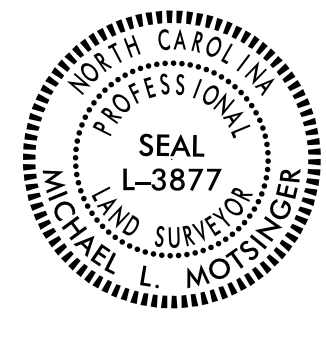


Location and Surveys

PROJECT SURVEYOR

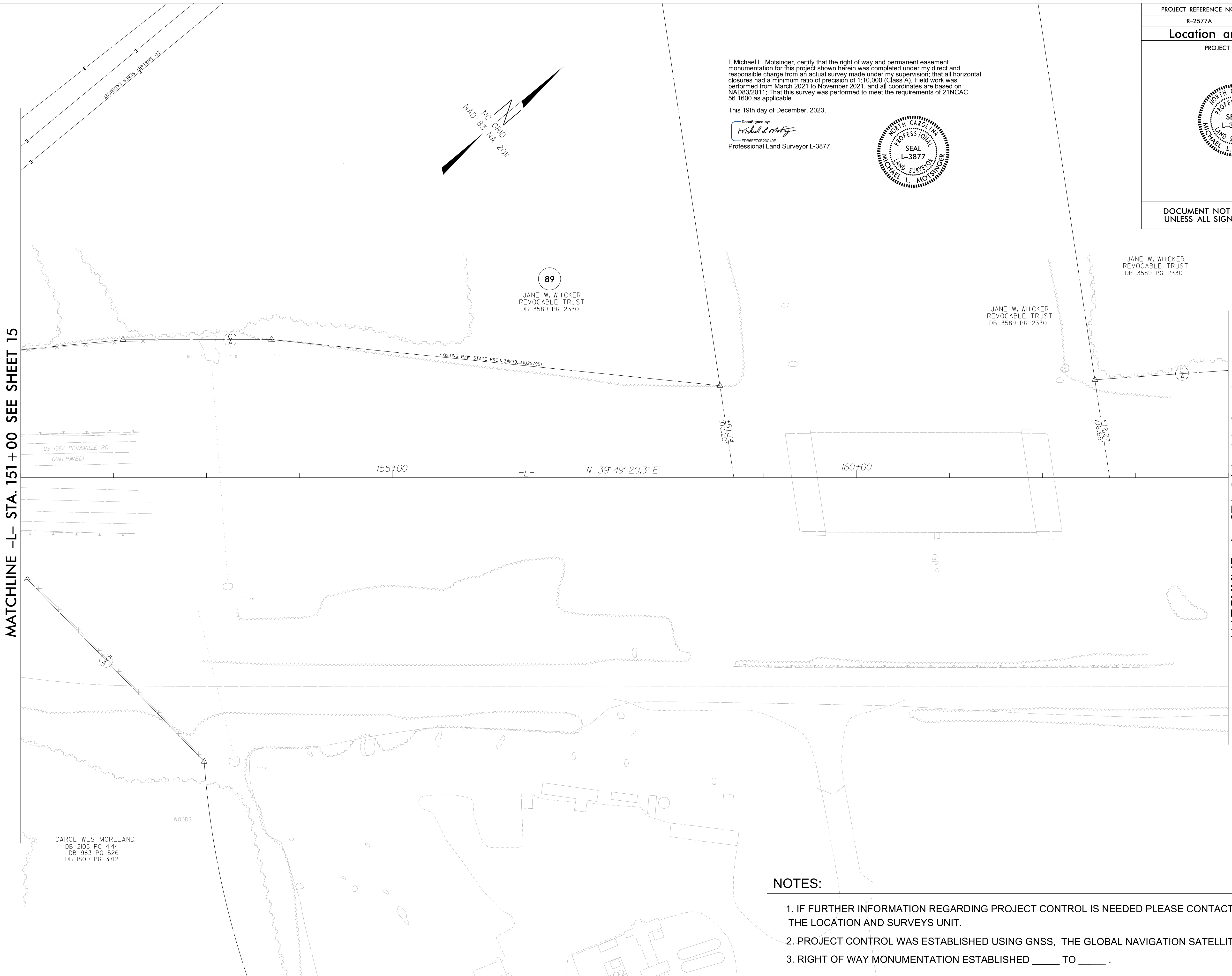
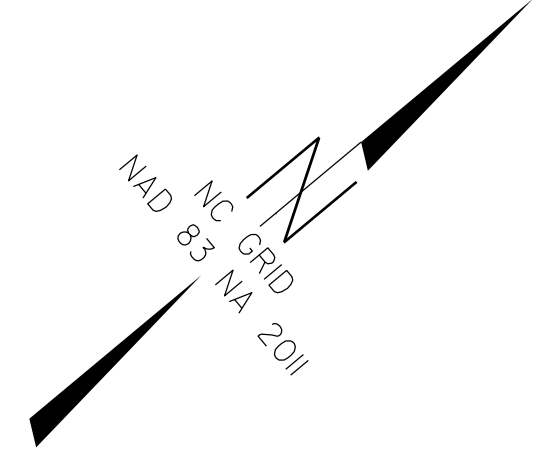
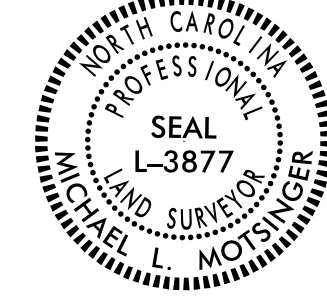


DOCUMENT NOT CONSIDERED FINAL
UNLESS ALL SIGNATURES COMPLETED

I, Michael L. Moisinger, certify that the right of way and permanent easement monumentation for this project shown herein was completed under my direct and responsible charge from an actual survey made under my supervision; that all horizontal closures had a minimum ratio of precision of 1:10,000 (Class A). Field work was performed from March 2021 to November 2021, and all coordinates are based on NAD83/2011. That this survey was performed to meet the requirements of 21NCAC 56.1600 as applicable.

This 19th day of December, 2023.

DocuSigned by:
Michael L. Moisinger
Professional Land Surveyor L-3877



89
JANE W. WHICKER
REVOCABLE TRUST
DB 3589 PG 2330

JANE W. WHICKER
REVOCABLE TRUST
DB 3589 PG 2330

JANE W. WHICKER
REVOCABLE TRUST
DB 3589 PG 2330

CAROL WESTMORELAND
DB 2105 PG 4144
DB 983 PG 526
DB 1809 PG 3712

NOTES:

1. IF FURTHER INFORMATION REGARDING PROJECT CONTROL IS NEEDED PLEASE CONTACT THE LOCATION AND SURVEYS UNIT.
2. PROJECT CONTROL WAS ESTABLISHED USING GNSS, THE GLOBAL NAVIGATION SATELLITE SYSTEM.
3. RIGHT OF WAY MONUMENTATION ESTABLISHED ____ TO ____.

REVISIONS

MATCHLINE -L- STA. 151 + 00 SEE SHEET 15

MATCHLINE -L- STA. 164 + 00 SEE SHEET 17

IS:DEC-2023 10:37
 S:\Projects\03\Winston\Rights of Way\ControlSheets\231214\Files Pulled 2023-12-13\NR-2577A_rdy_psh16.dgn
 AT LS-3286081
 Bevington