

PROJECT REFERENCE NO.	SHEET NO.
R-2577A	RW06
Location and Surveys	
PROJECT SURVEYOR	



DOCUMENT NOT CONSIDERED FINAL
UNLESS ALL SIGNATURES COMPLETED

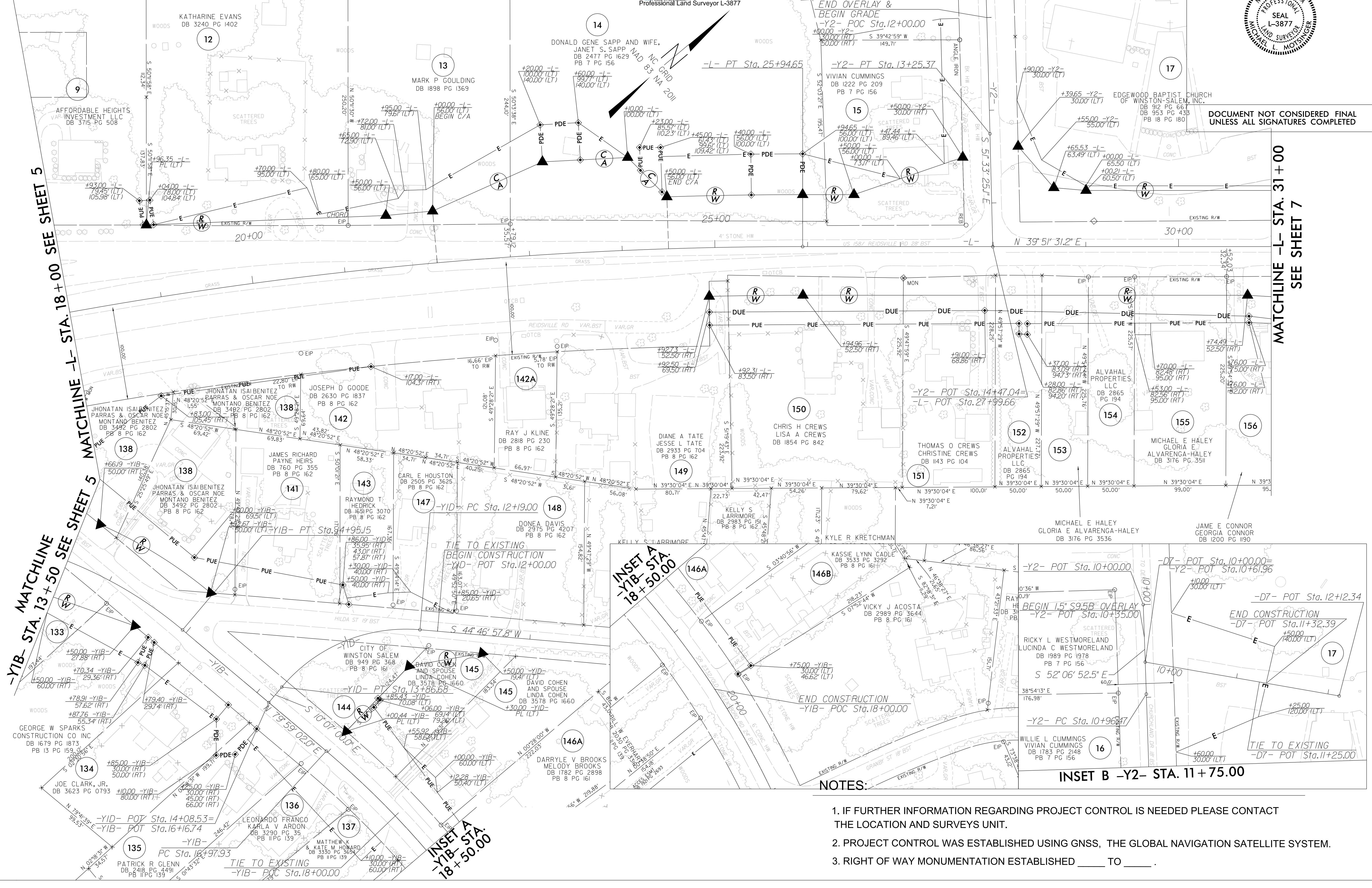
I, Michael L. Molsinger, certify that the right of way and permanent easement monumentation for this project shown herein was completed under my direct and responsible charge from an actual survey made under my supervision; that all horizontal closures had a minimum ratio of precision of 1:10,000 (Class A). Field work was performed from March 2021 to November 2021, and all coordinates are based on NAD83/2011; That this survey was performed to meet the requirements of 21NCAC 56.1600 as applicable.

This 19th day of December, 2023.
 Michael L. Molsinger
 Professional Land Surveyor L-3877



-L-	-Y1B-	-Y1D-	-Y2-
PI Sta 19+25.29 Δ = 17° 22' 15.0" (RT) D = 117' 15.2" L = 1349.14' T = 679.79' R = 450.00' SE = 0.003 DS = 50 MPH	PI Sta 13+94.41 Δ = 26° 06' 55.3" (RT) D = 12' 43' 56.6" L = 205.11' T = 104.37' R = 946.60' SE = 0.04 DS = 277.62 MPH	PI Sta 19+64.82 Δ = 31° 29' 26.0" (RT) D = 6' 03' 10.0" L = 520.27' T = 266.89' R = 175.00' SE = 0.04 DS = 50 MPH	PI Sta 13+09.91 Δ = 54° 53' 57.8" (LT) D = 32' 44' 25.6" L = 167.68' T = 90.90' R = 175.00' SE = 0.04 DS = 25 MPH
PI Sta 12+10.92 Δ = 0° 33' 26.9" (RT) D = 0' 14' 36.8" L = 228.90' T = 114.45' R = 23,525.00' SE = NC DS = 40 MPH			

INSET B -Y2- STA. 11 + 75.00



NOTES:

1. IF FURTHER INFORMATION REGARDING PROJECT CONTROL IS NEEDED PLEASE CONTACT THE LOCATION AND SURVEYS UNIT.
2. PROJECT CONTROL WAS ESTABLISHED USING GNSS, THE GLOBAL NAVIGATION SATELLITE SYSTEM.
3. RIGHT OF WAY MONUMENTATION ESTABLISHED _____ TO _____.

REVISIONS

S:\Projects\2023\1604\1604\Winston-Rural\2577A\Right of Way\Control\Sheets\231214\Files Pulled 2023-12-13\R-2577A_rdy_psh06.dgn
 16 DEC 2023 16:04
 S:\Projects\2023\1604\1604\Winston-Rural\2577A\Right of Way\Control\Sheets\231214\Files Pulled 2023-12-13\R-2577A_rdy_psh06.dgn
 AT LS-3246081

MATCHLINE -L- STA. 18 + 00 SEE SHEET 5

MATCHLINE -L- STA. 13 + 50 SEE SHEET 5

MATCHLINE -L- STA. 31 + 00
SEE SHEET 7