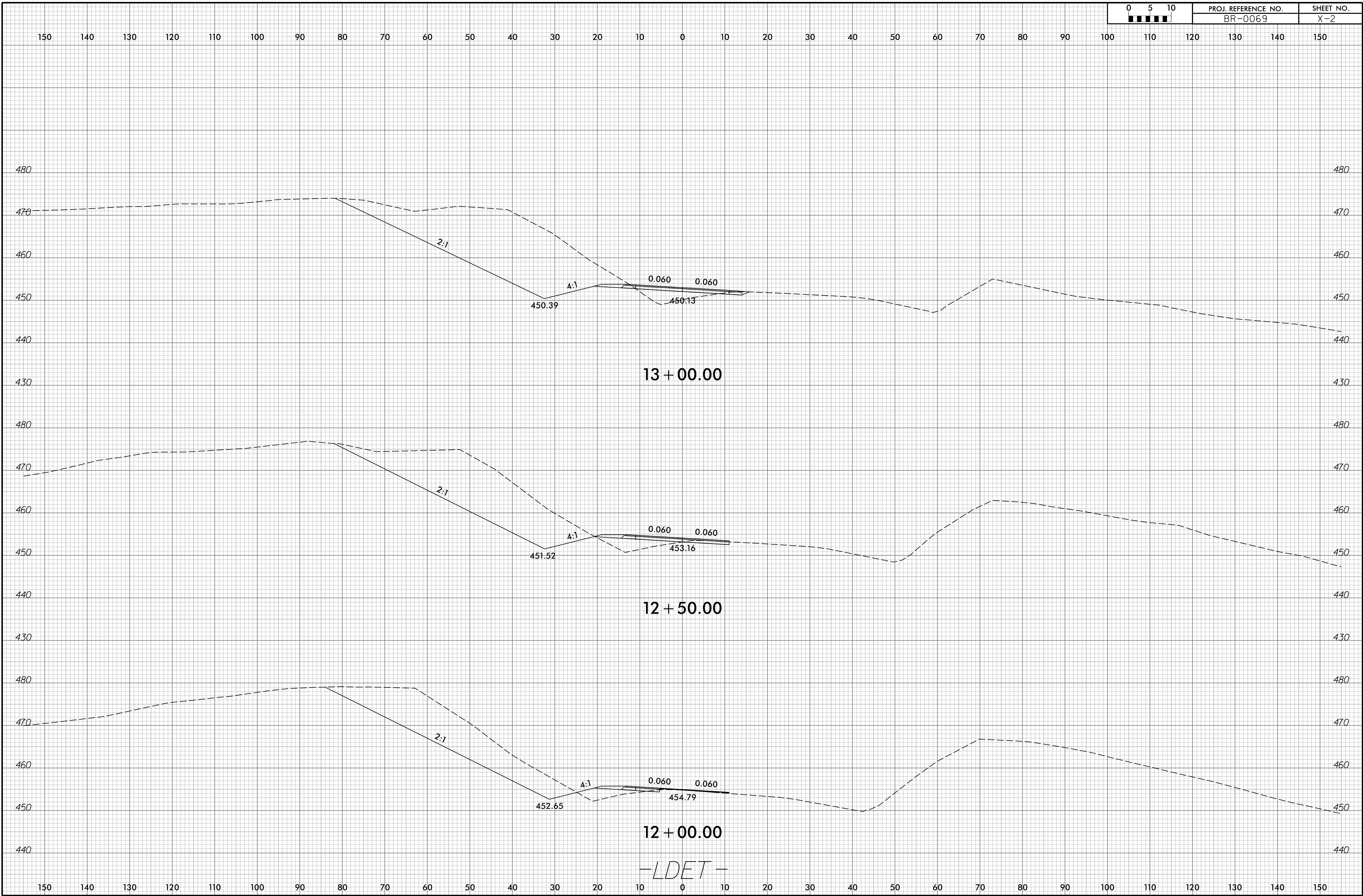


Note: Approximate quantities only. Shoulder Borrow, Fine Grading, Clearing and Grubbing, Breaking of Existing Pavement, and Removal of Existing Pavement will be paid for at the contract lump sum price for "Grading."

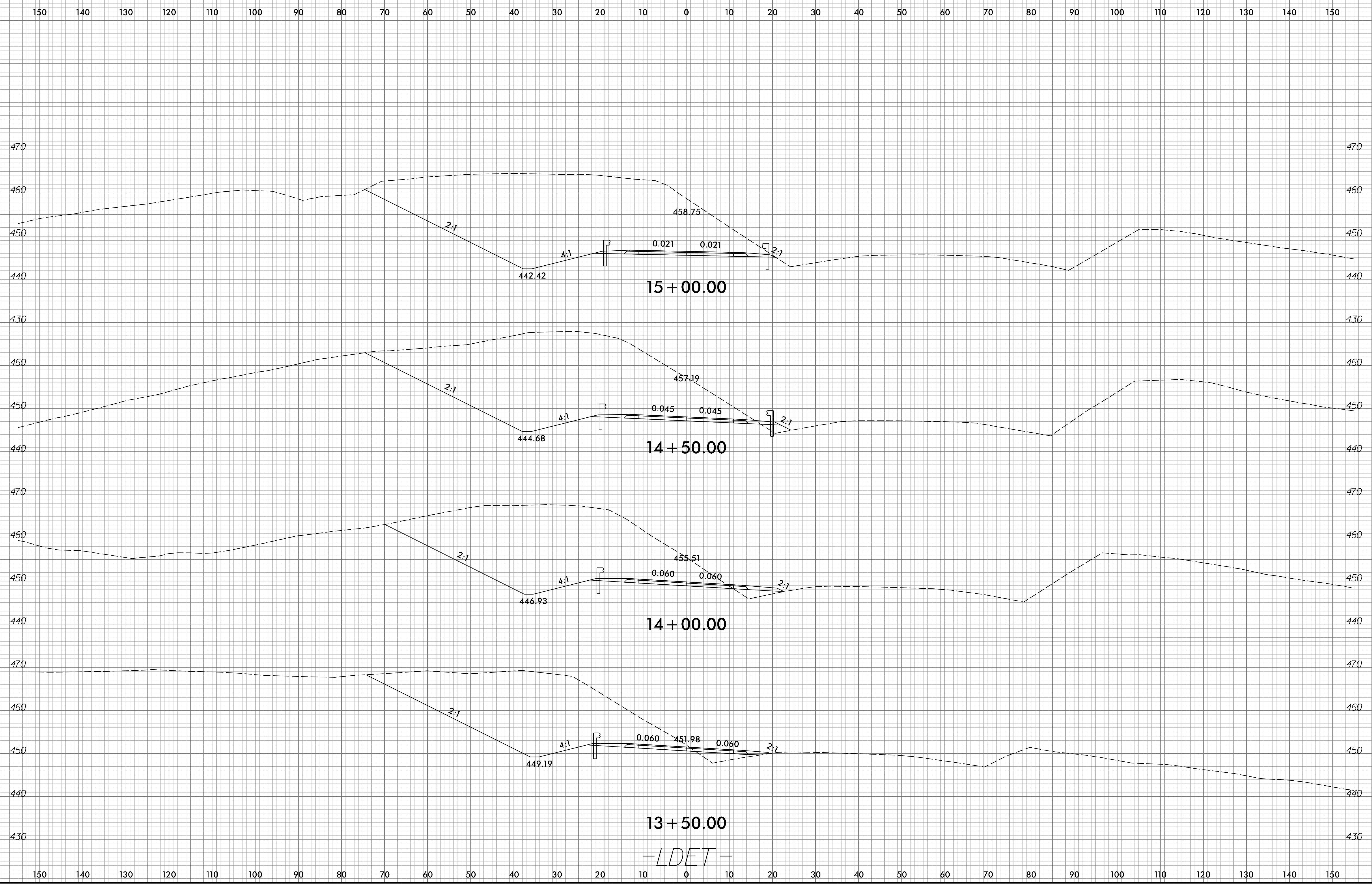
BEGIN CONSTRUCTION -LDET- STA 10+40.00
-LDET-



-LDET-

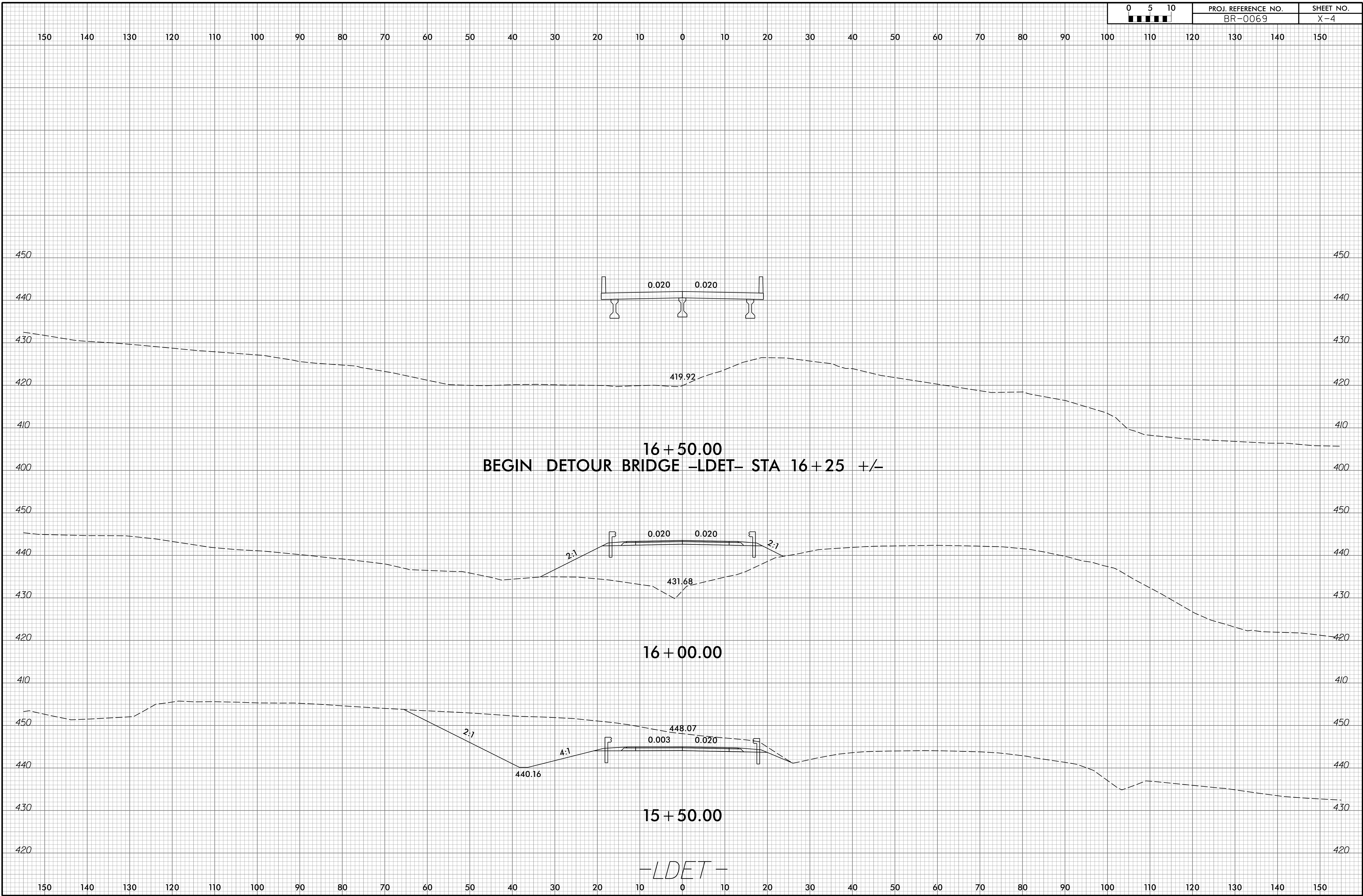
6/23/16

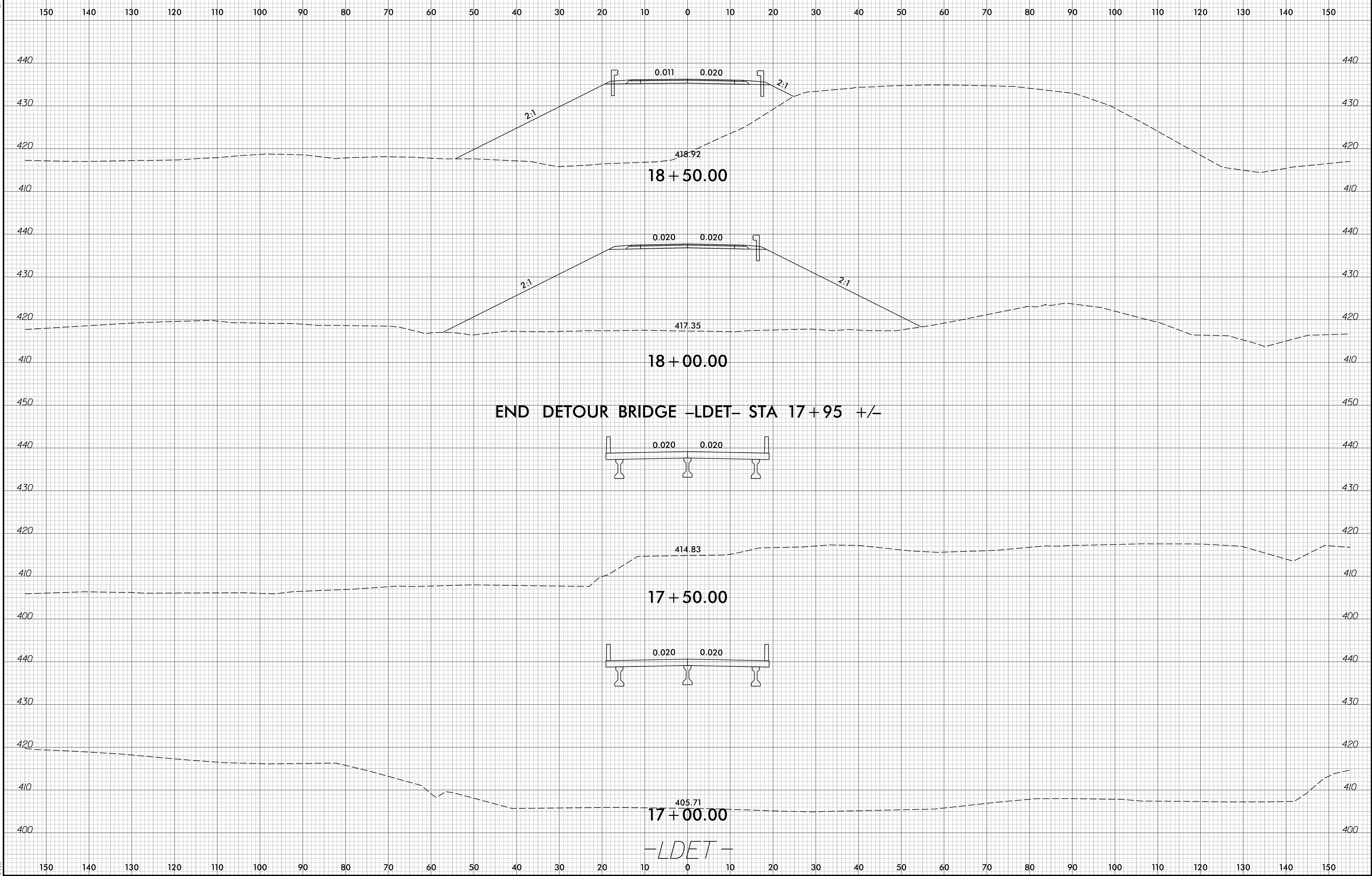
0 5 10	PROJ. REFERENCE NO.	SHEET NO.
	BR-0069	X-3

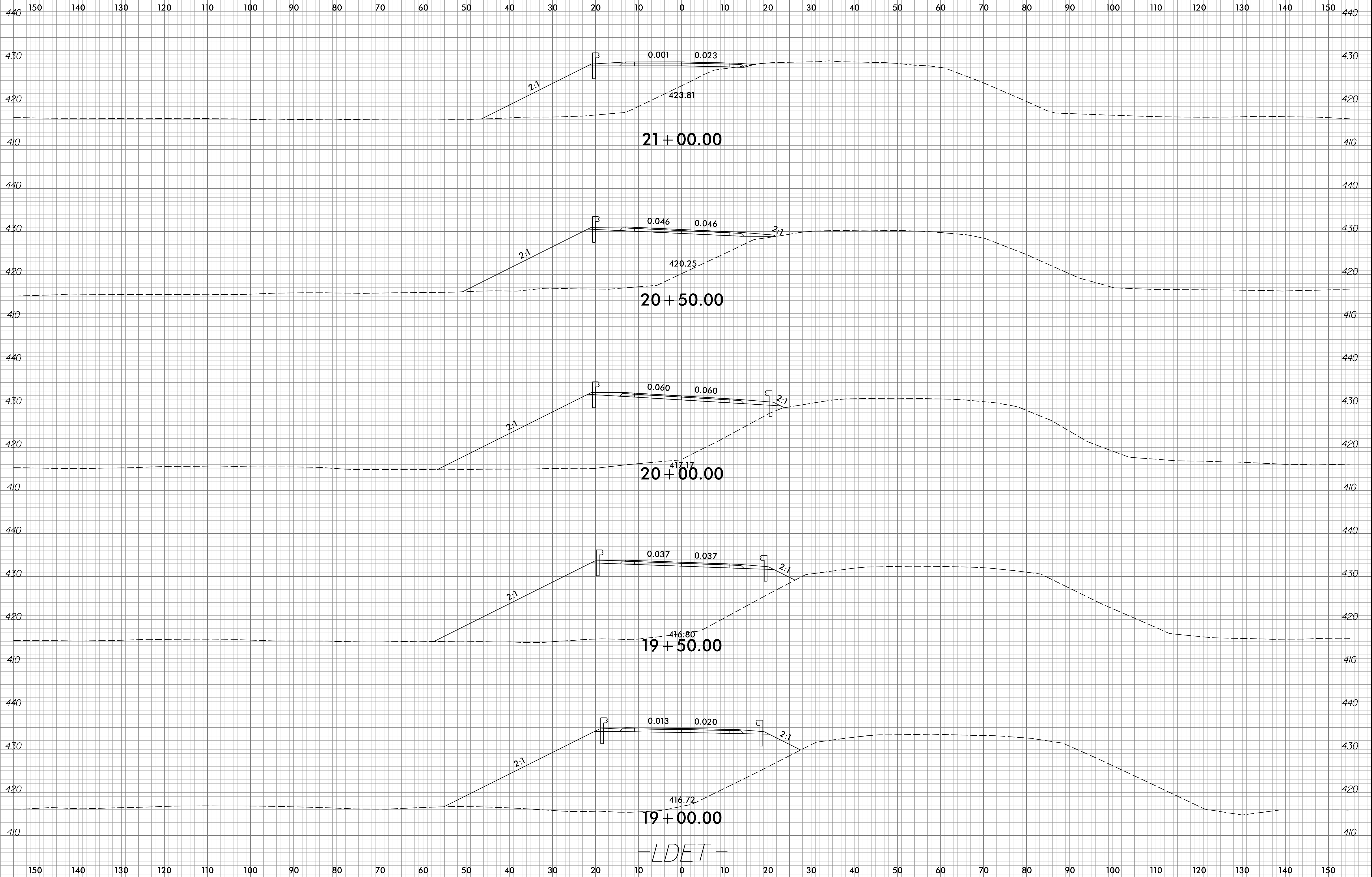


I:\28\2024\01\BR\10011-10\BR-0069\Roadway\SC\BR-0069_XPL_DET.dgn

-LDET-

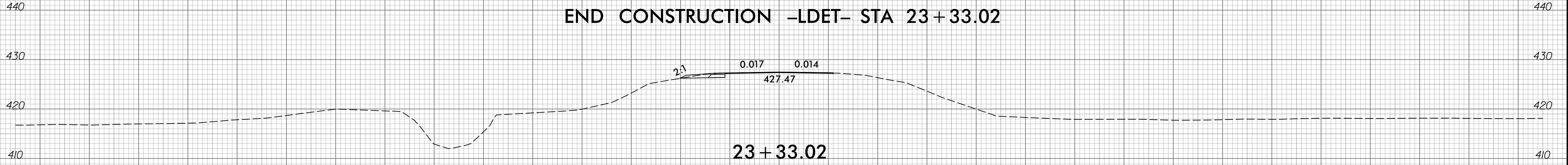




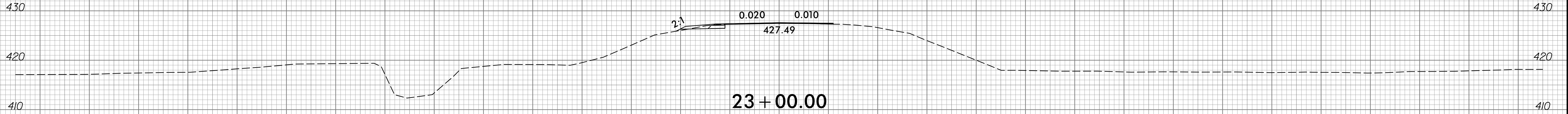


150 140 130 120 110 100 90 80 70 60 50 40 30 20 10 0 10 20 30 40 50 60 70 80 90 100 110 120 130 140 150

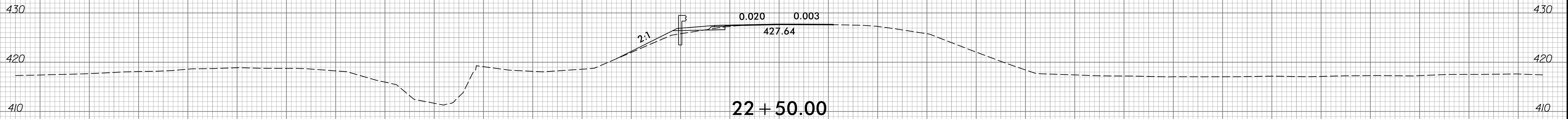
END CONSTRUCTION -LDET- STA 23 + 33.02



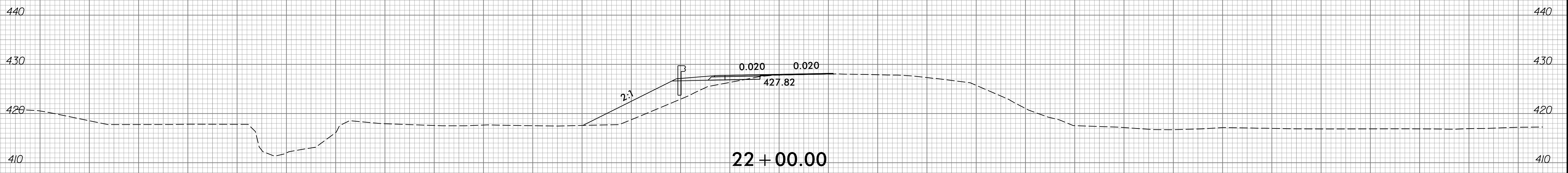
23 + 33.02



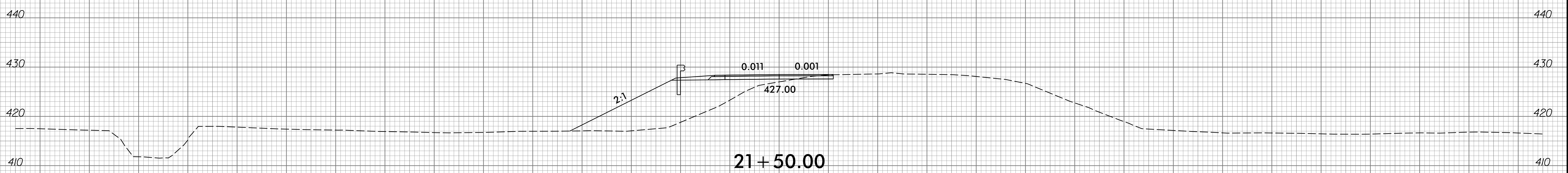
23 + 00.00



22 + 50.00



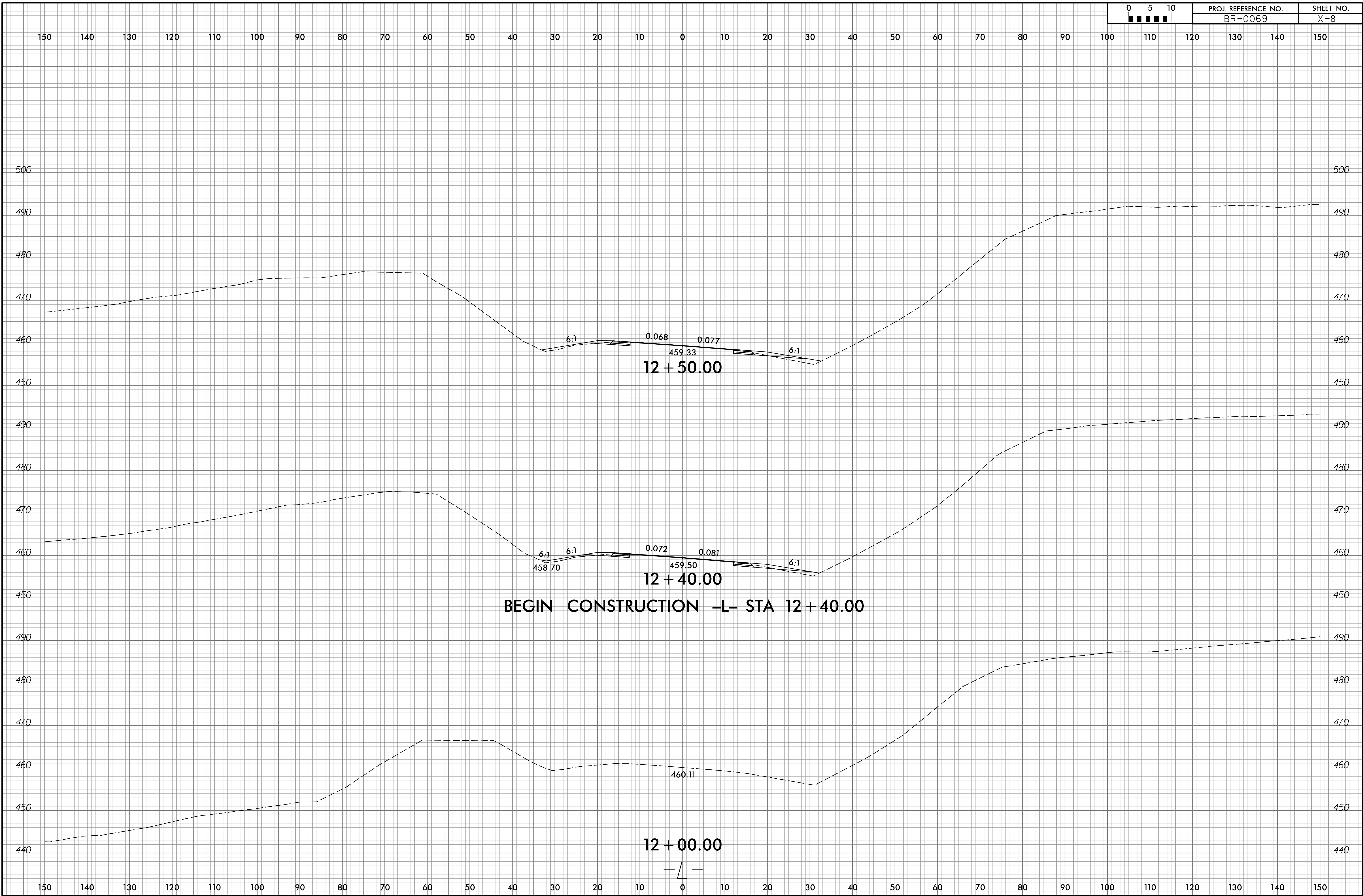
22 + 00.00

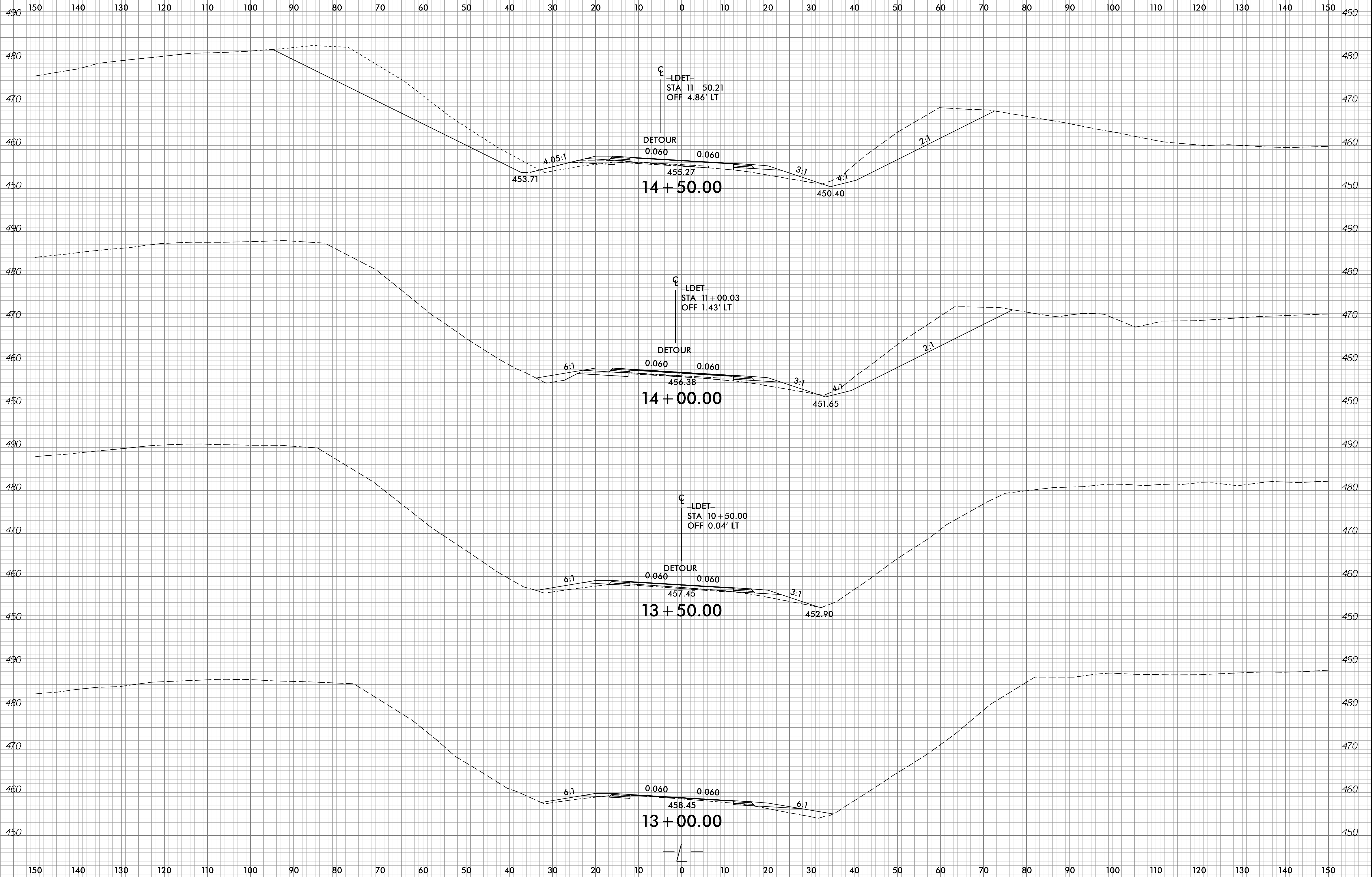


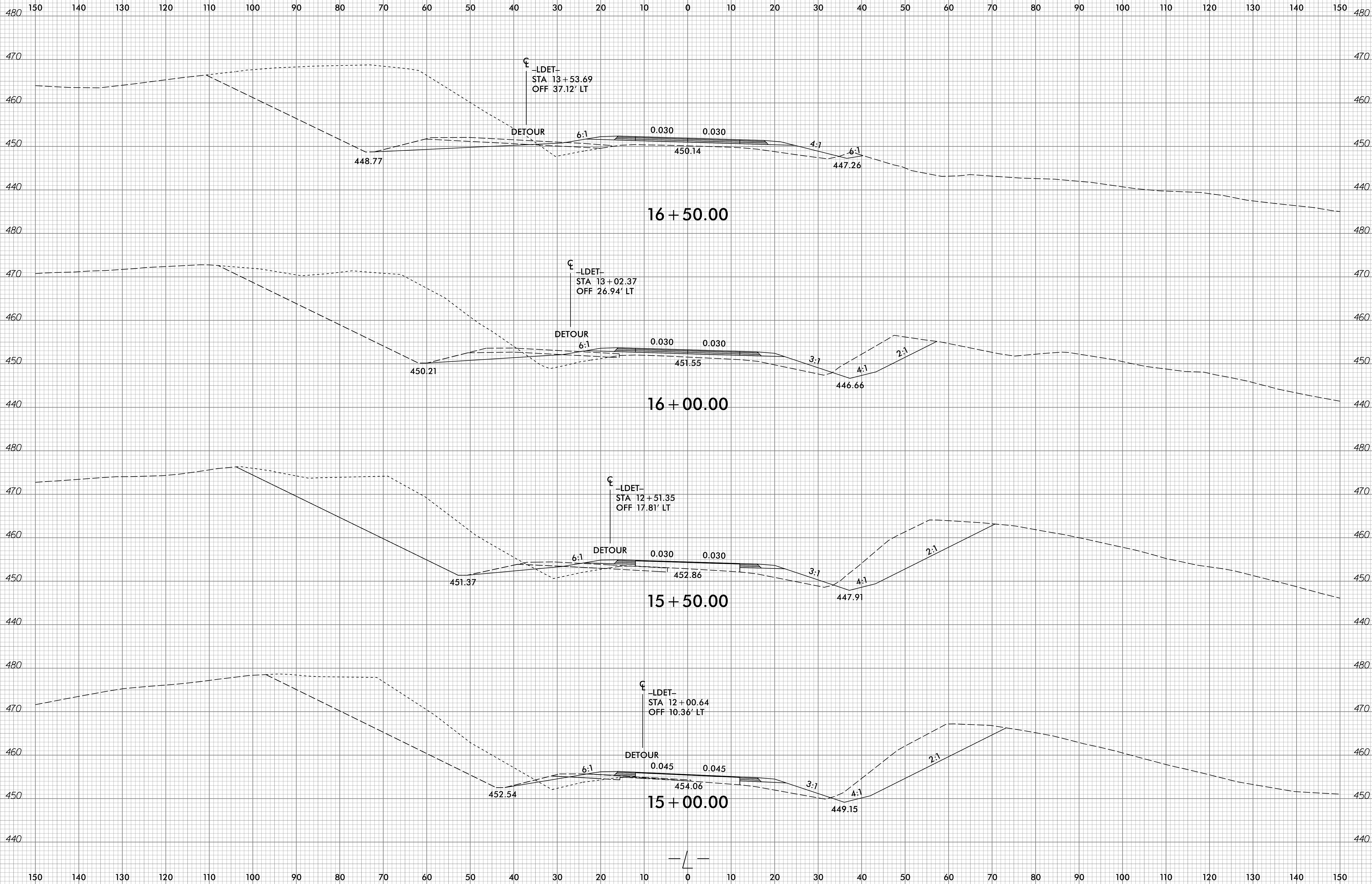
21 + 50.00

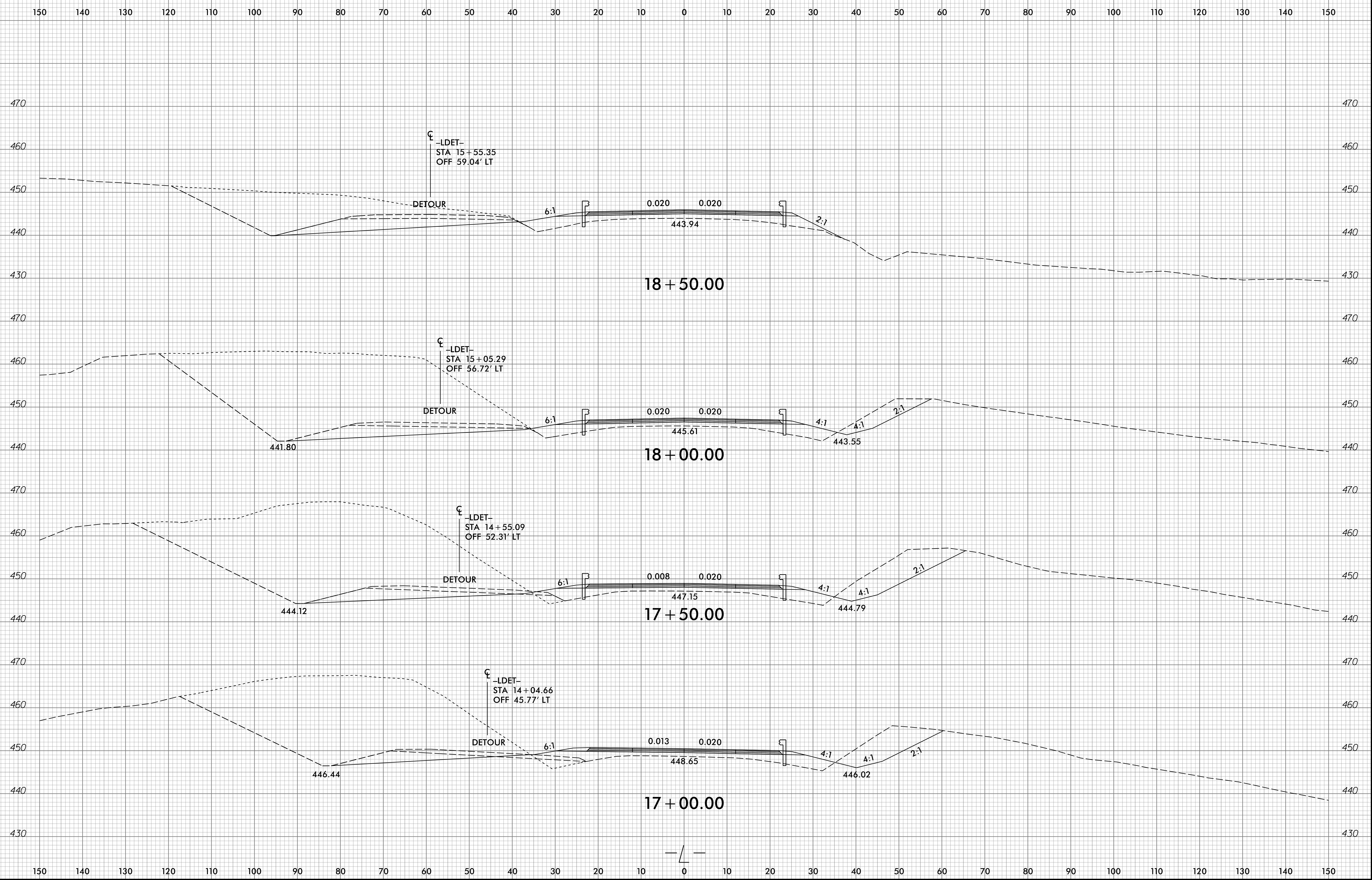
-LDET-

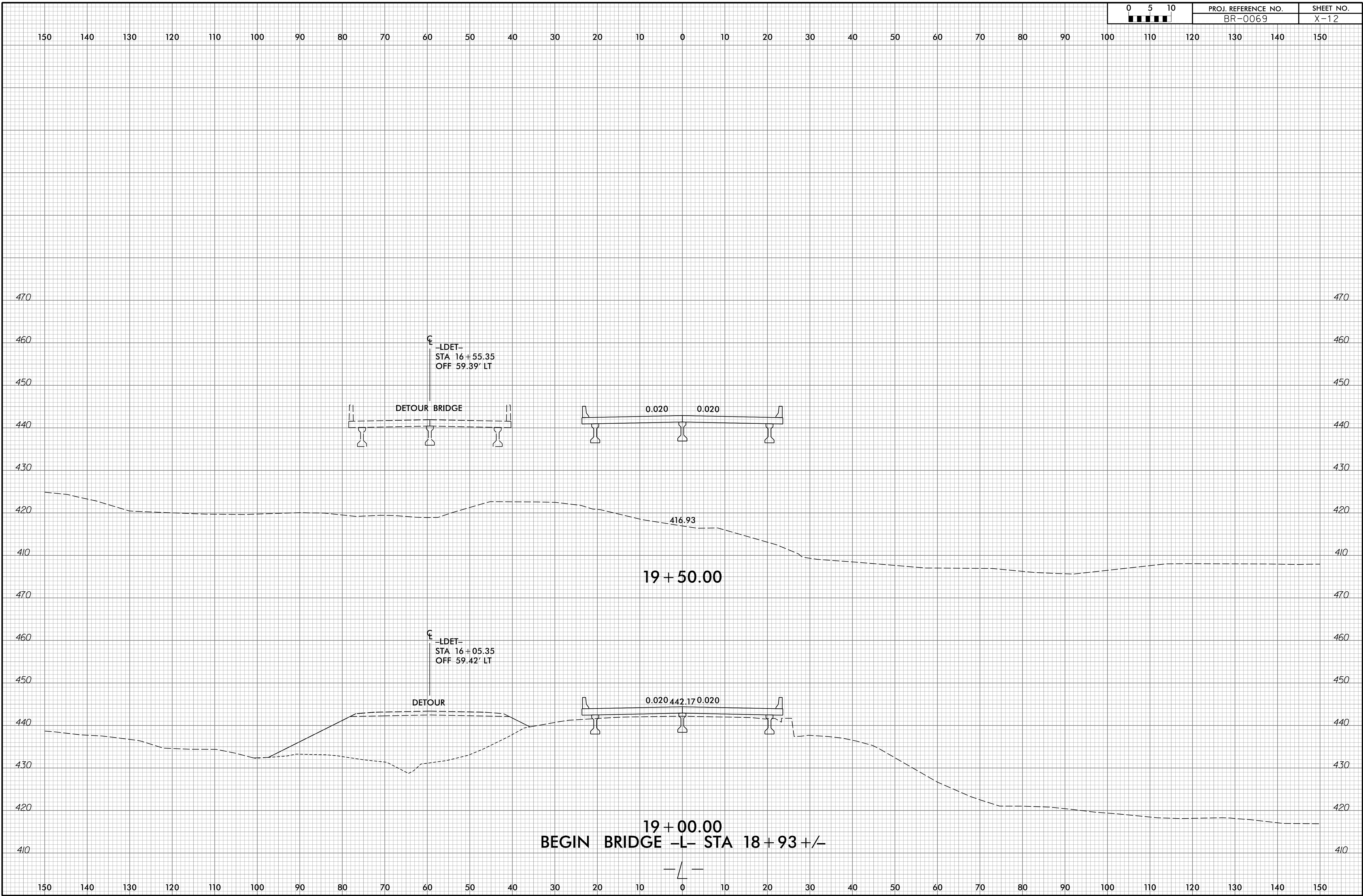
150 140 130 120 110 100 90 80 70 60 50 40 30 20 10 0 10 20 30 40 50 60 70 80 90 100 110 120 130 140 150

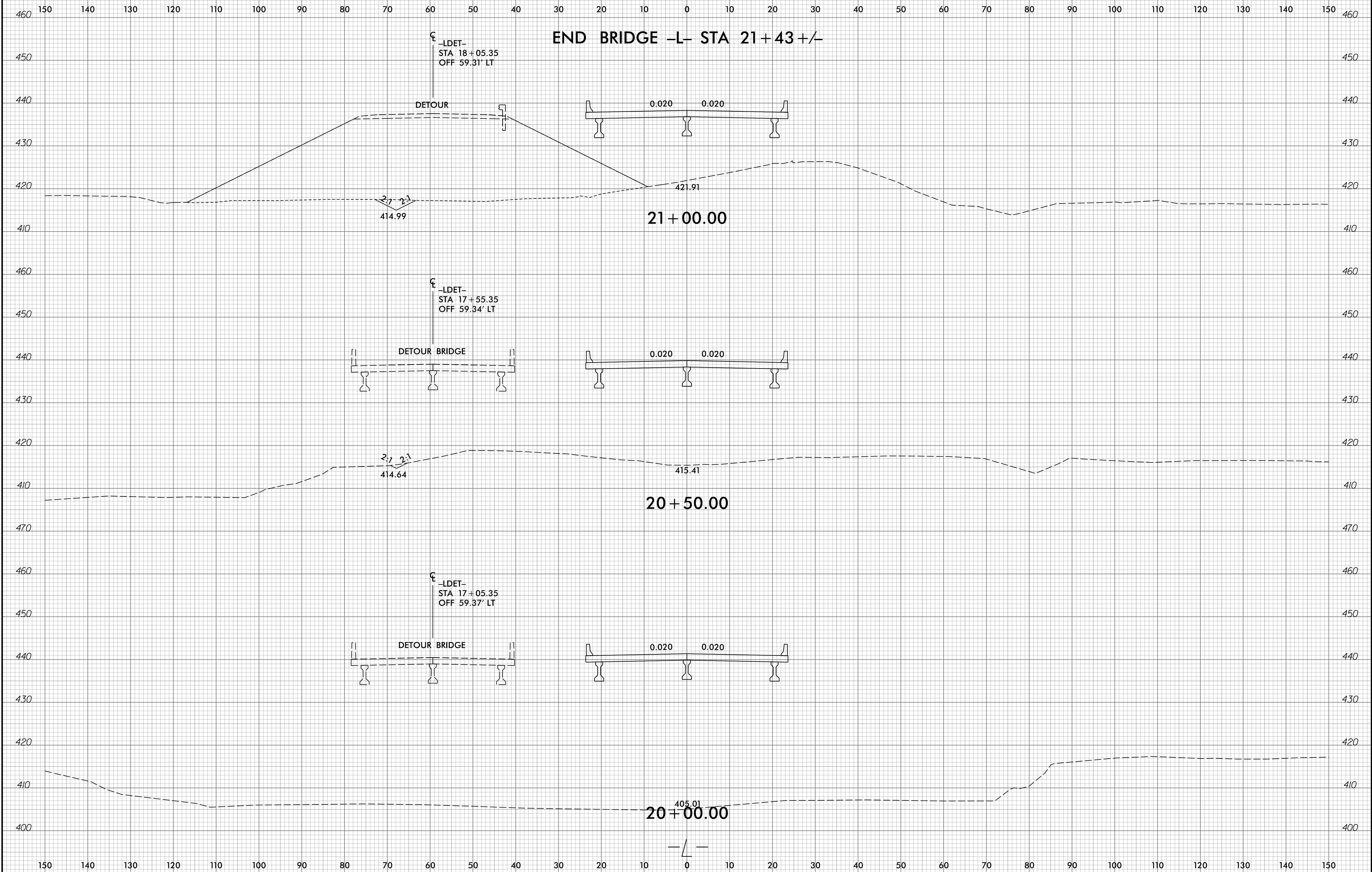


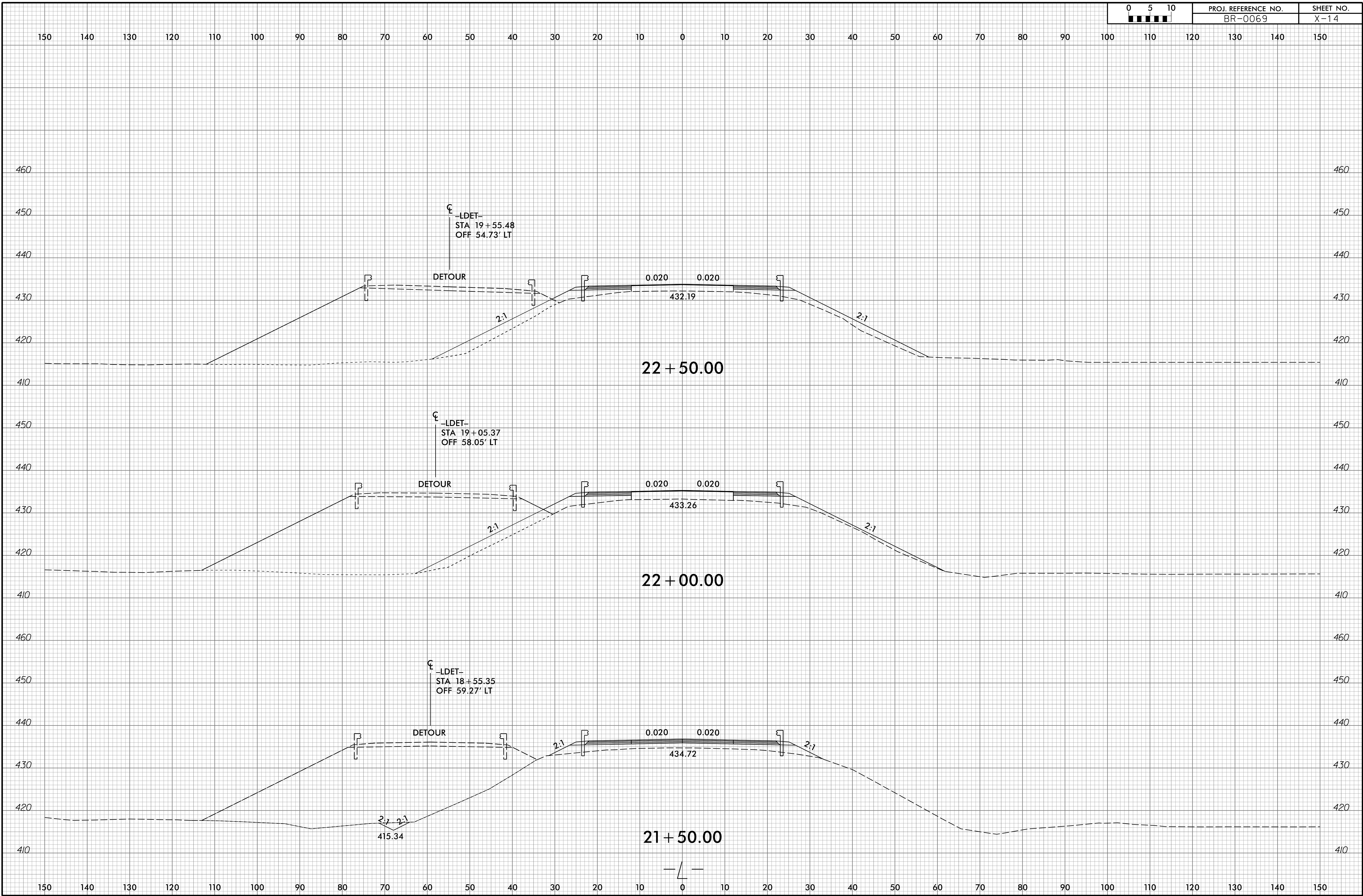


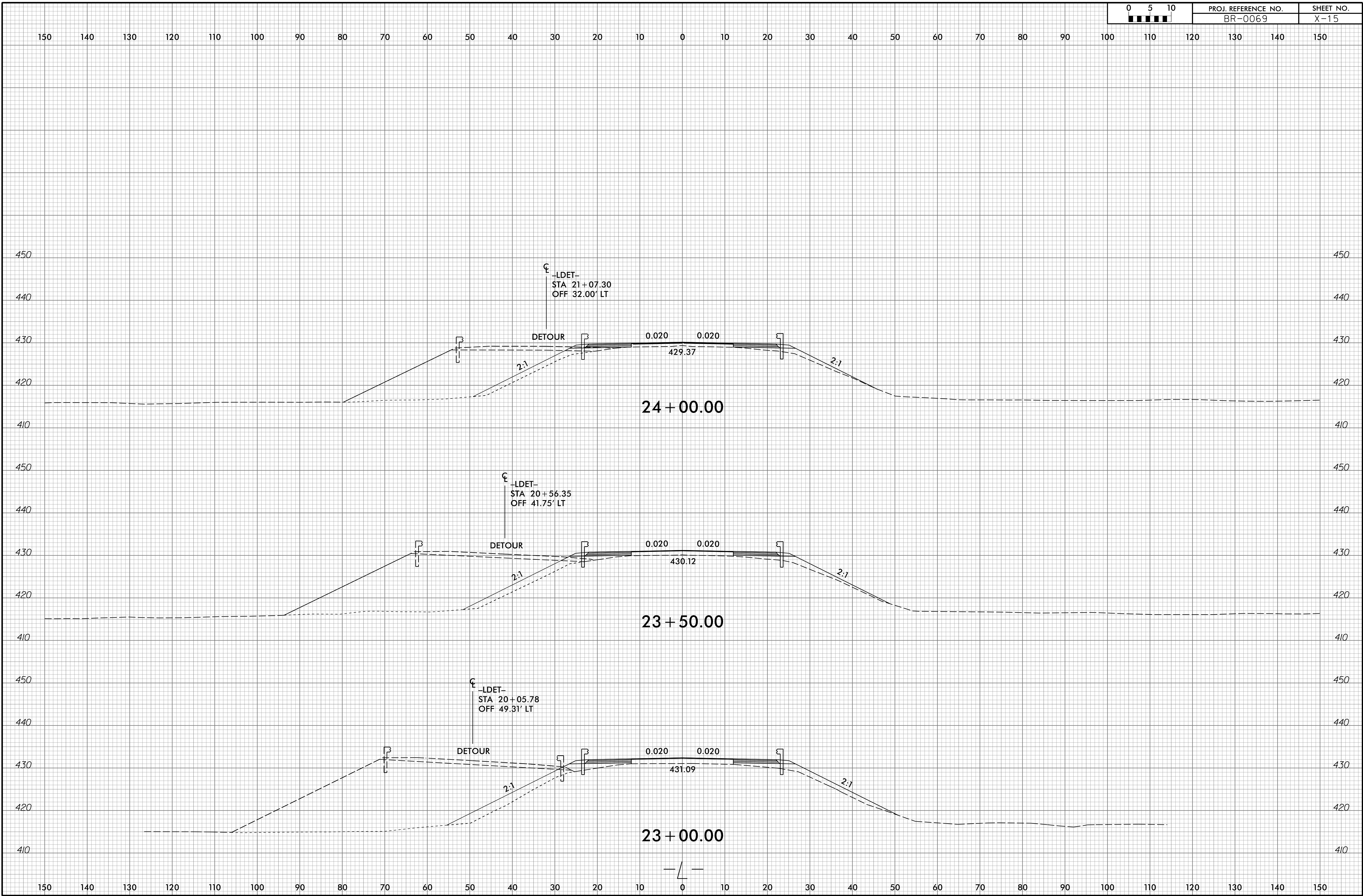


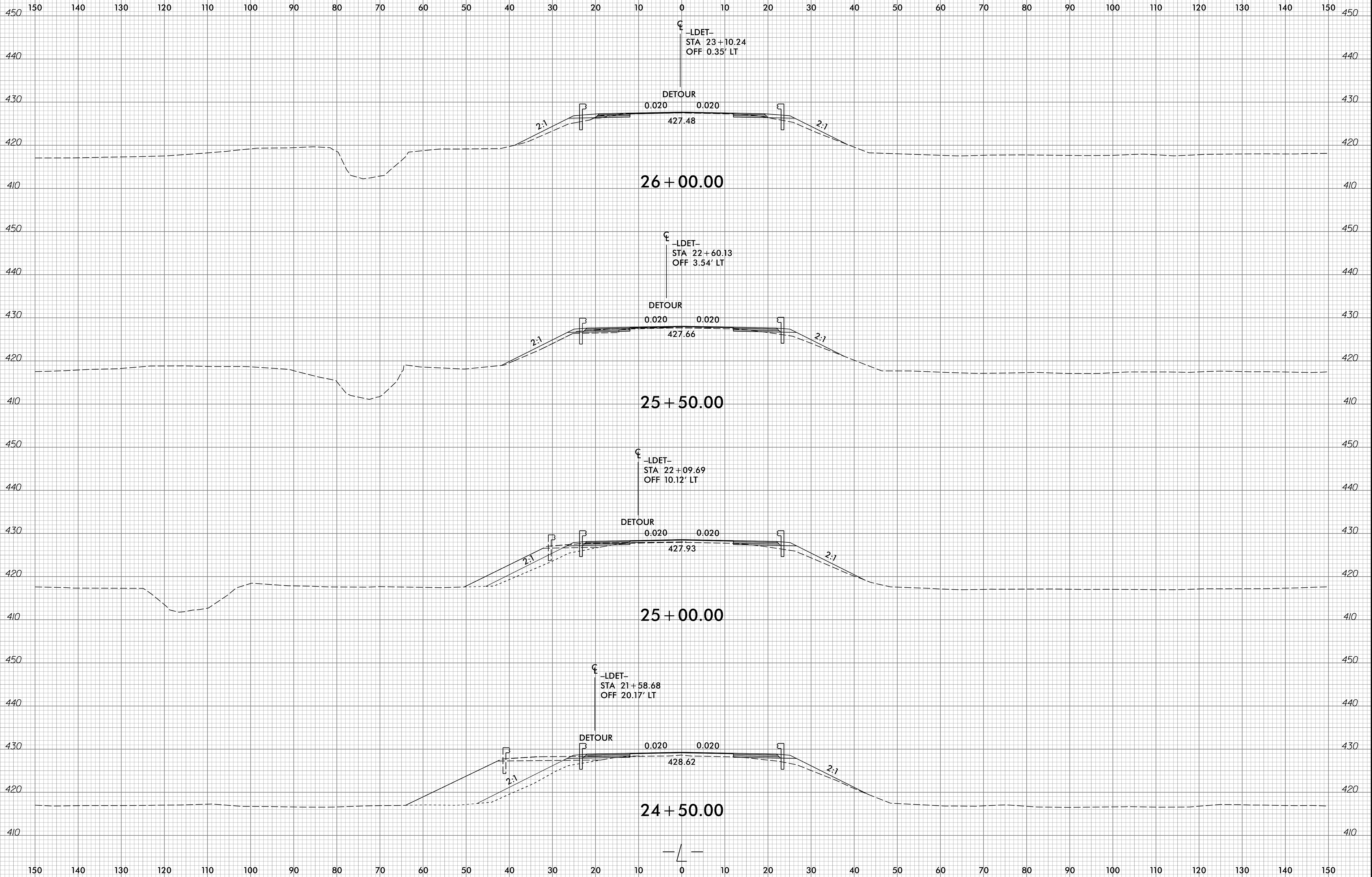












150 140 130 120 110 100 90 80 70 60 50 40 30 20 10 0 10 20 30 40 50 60 70 80 90 100 110 120 130 140 150

