

REFERENCE: B-4654

PROJECT: 38454

CONTENTS

<u>SHEET NO.</u>	<u>DESCRIPTION</u>
1	TITLE SHEET
2	LEGEND (SOIL & ROCK)
3	SITE PLAN
4, 5	PROFILE(S)
6	SOIL TEST RESULTS

STATE OF NORTH CAROLINA
DEPARTMENT OF TRANSPORTATION
DIVISION OF HIGHWAYS
GEOTECHNICAL ENGINEERING UNIT

STRUCTURE
SUBSURFACE INVESTIGATION

COUNTY WAKE
 PROJECT DESCRIPTION BRIDGE NO. 69 ON NC-50 (-L-)
(BENSON ROAD) OVER US HWY 70 (-YI-)

STATE	STATE PROJECT REFERENCE NO.	SHEET NO.	TOTAL SHEETS
N.C.	B-4654	1	6

CAUTION NOTICE

THE SUBSURFACE INFORMATION AND THE SUBSURFACE INVESTIGATION ON WHICH IT IS BASED WERE MADE FOR THE PURPOSE OF PREPARING THE SCOPE OF WORK TO BE INCLUDED IN THE REQUEST FOR PROPOSAL. THE VARIOUS FIELD BORING LOGS, ROCK CORES AND SOIL TEST DATA AVAILABLE MAY BE REVIEWED OR INSPECTED IN RALEIGH BY CONTACTING THE N. C. DEPARTMENT OF TRANSPORTATION, GEOTECHNICAL ENGINEERING UNIT AT (919) 707-6850. THE SUBSURFACE PLANS AND REPORTS, FIELD BORING LOGS, ROCK CORES AND SOIL TEST DATA ARE NOT PART OF THE CONTRACT.

SOIL AND ROCK BOUNDARIES WITHIN A BOREHOLE ARE BASED ON GEOTECHNICAL INTERPRETATION UNLESS ENCOUNTERED IN A SAMPLE. INTERPRETED BOUNDARIES MAY NOT NECESSARILY REFLECT ACTUAL SUBSURFACE CONDITIONS BETWEEN SAMPLED STRATA AND BOREHOLE INFORMATION MAY NOT NECESSARILY REFLECT ACTUAL SUBSURFACE CONDITIONS BETWEEN BORINGS. THE LABORATORY SAMPLE DATA AND THE IN SITU (IN-PLACE) TEST DATA CAN BE RELIED ON ONLY TO THE DEGREE OF RELIABILITY INHERENT IN THE STANDARD TEST METHOD. THE OBSERVED WATER LEVELS OR SOIL MOISTURE CONDITIONS INDICATED IN THE SUBSURFACE INVESTIGATIONS ARE AS RECORDED AT THE TIME OF THE INVESTIGATION. THESE WATER LEVELS OR SOIL MOISTURE CONDITIONS MAY VARY CONSIDERABLY WITH TIME ACCORDING TO CLIMATIC CONDITIONS INCLUDING TEMPERATURES, PRECIPITATION AND WIND, AS WELL AS OTHER NON-CLIMATIC FACTORS.

THE BIDDER OR CONTRACTOR IS CAUTIONED THAT DETAILS SHOWN ON THE SUBSURFACE PLANS ARE PRELIMINARY ONLY AND IN MANY CASES THE FINAL DESIGN DETAILS ARE DIFFERENT. FOR BIDDING AND CONSTRUCTION PURPOSES, REFER TO THE CONSTRUCTION PLANS AND DOCUMENTS FOR FINAL DESIGN INFORMATION ON THIS PROJECT. THE DEPARTMENT DOES NOT WARRANT OR GUARANTEE THE SUFFICIENCY OR ACCURACY OF THE INVESTIGATION MADE, NOR THE INTERPRETATIONS MADE, OR OPINION OF THE DEPARTMENT AS TO THE TYPE OF MATERIALS AND CONDITIONS TO BE ENCOUNTERED. THE BIDDER OR CONTRACTOR IS CAUTIONED TO MAKE SUCH INDEPENDENT SUBSURFACE INVESTIGATIONS AS HE DEEMS NECESSARY TO SATISFY HIMSELF AS TO CONDITIONS TO BE ENCOUNTERED ON THE PROJECT. THE CONTRACTOR SHALL HAVE NO CLAIM FOR ADDITIONAL COMPENSATION OR FOR AN EXTENSION OF TIME FOR ANY REASON RESULTING FROM THE ACTUAL CONDITIONS ENCOUNTERED AT THE SITE DIFFERING FROM THOSE INDICATED IN THE SUBSURFACE INFORMATION.

- NOTES:
- THE INFORMATION CONTAINED HEREIN IS NOT IMPLIED OR GUARANTEED BY THE N. C. DEPARTMENT OF TRANSPORTATION AS ACCURATE NOR IS IT CONSIDERED PART OF THE PLANS, SPECIFICATIONS OR CONTRACT FOR THE PROJECT.
 - BY HAVING REQUESTED THIS INFORMATION, THE CONTRACTOR SPECIFICALLY WAIVES ANY CLAIMS FOR INCREASED COMPENSATION OR EXTENSION OF TIME BASED ON DIFFERENCES BETWEEN THE CONDITIONS INDICATED HEREIN AND THE ACTUAL CONDITIONS AT THE PROJECT SITE.

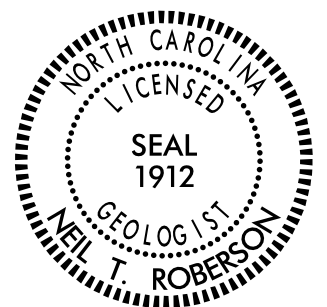
PERSONNEL

N.O. MOORE

D.G. PINTER

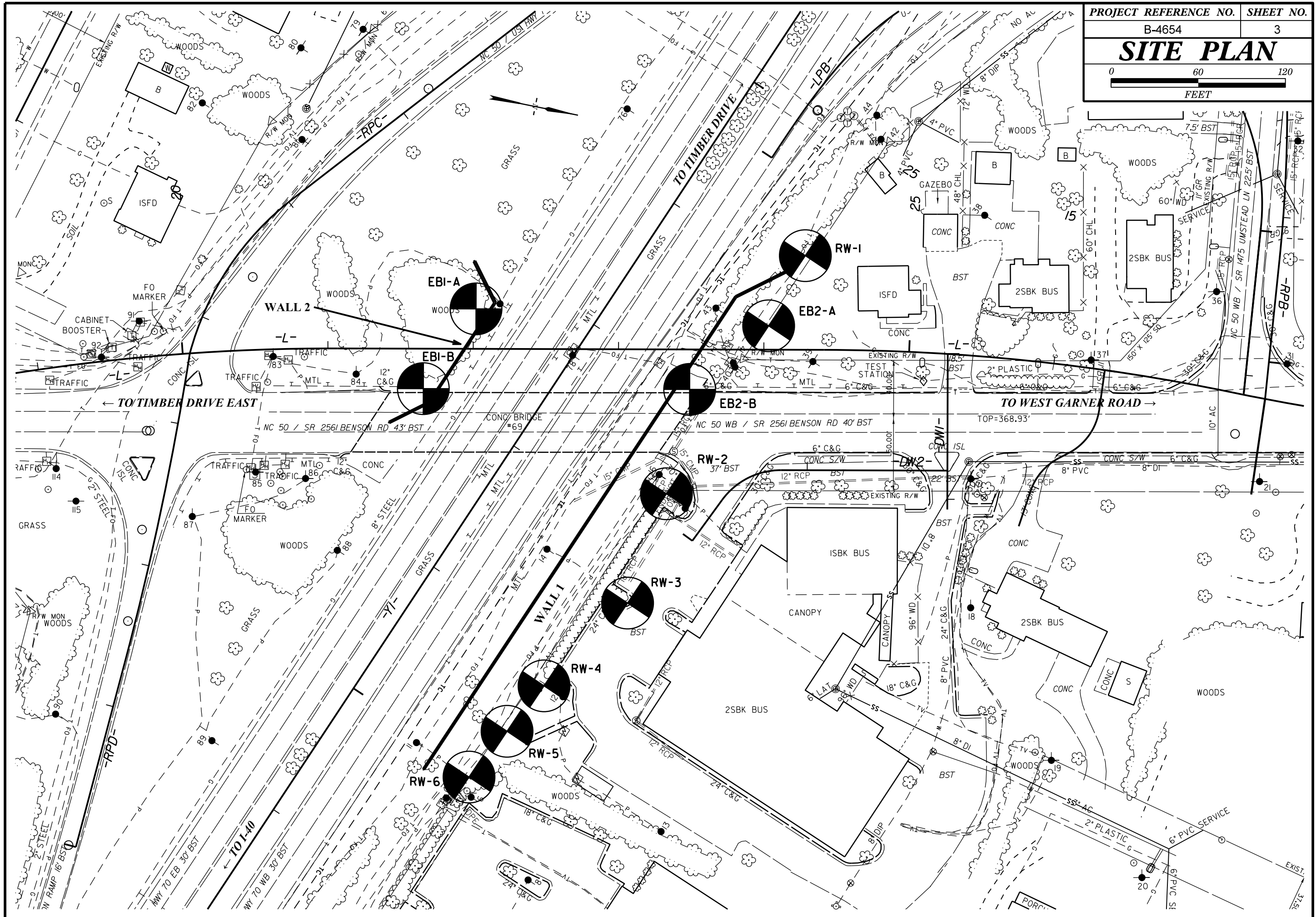
R.E. CLARKE

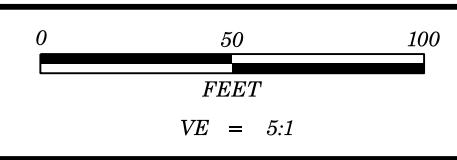
INVESTIGATED BY N.O. MOORE
 DRAWN BY N.O. MOORE
 CHECKED BY N.T. ROBERSON
 SUBMITTED BY N.T. ROBERSON
 DATE NOVEMBER 2018



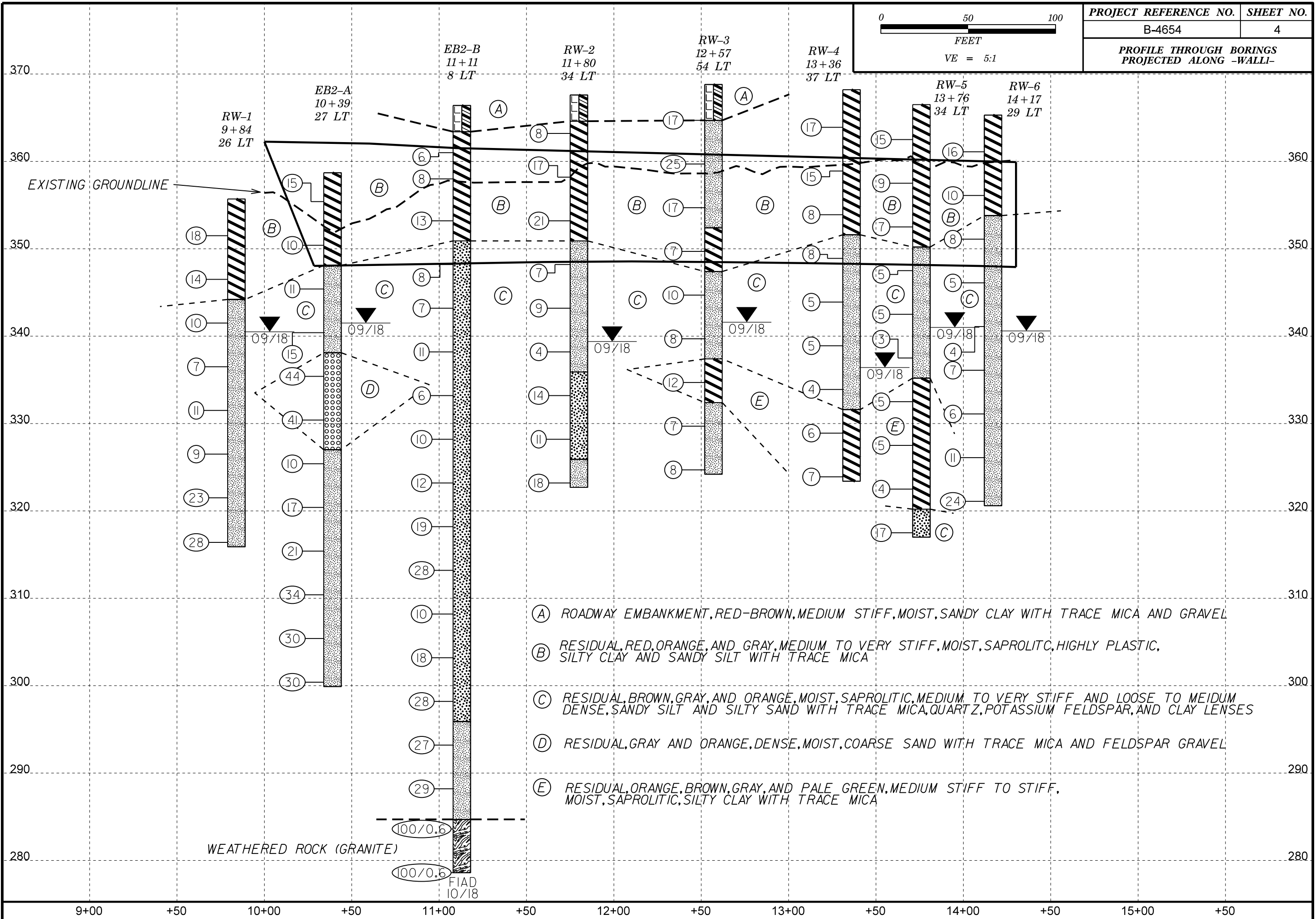
DocuSigned by:
Neil T. Roberson 3/1/2019
 4061D9A8C6E40C SIGNATURE DATE

**DOCUMENT NOT CONSIDERED FINAL
 UNLESS ALL SIGNATURES COMPLETED**



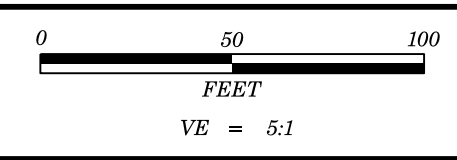


PROJECT REFERENCE NO.	SHEET NO.
B-4654	4
PROFILE THROUGH BORINGS PROJECTED ALONG -WALL-	



- (A) ROADWAY EMBANKMENT, RED-BROWN, MEDIUM STIFF, MOIST, SANDY CLAY WITH TRACE MICA AND GRAVEL
- (B) RESIDUAL, RED, ORANGE, AND GRAY, MEDIUM TO VERY STIFF, MOIST, SAPROLITE, HIGHLY PLASTIC, SILTY CLAY AND SANDY SILT WITH TRACE MICA
- (C) RESIDUAL, BROWN, GRAY, AND ORANGE, MOIST, SAPROLITIC, MEDIUM TO VERY STIFF AND LOOSE TO MEDIUM DENSE, SANDY SILT AND SILTY SAND WITH TRACE MICA, QUARTZ, POTASSIUM FELDSPAR, AND CLAY LENSES
- (D) RESIDUAL, GRAY AND ORANGE, DENSE, MOIST, COARSE SAND WITH TRACE MICA AND FELDSPAR GRAVEL
- (E) RESIDUAL, ORANGE, BROWN, GRAY, AND PALE GREEN, MEDIUM STIFF TO STIFF, MOIST, SAPROLITIC, SILTY CLAY WITH TRACE MICA

(100/0.6)
FIAD 10/18



PROJECT REFERENCE NO.	SHEET NO.
B-4654	5
PROFILE THROUGH BORINGS PROJECTED ALONG -WALL2-	

