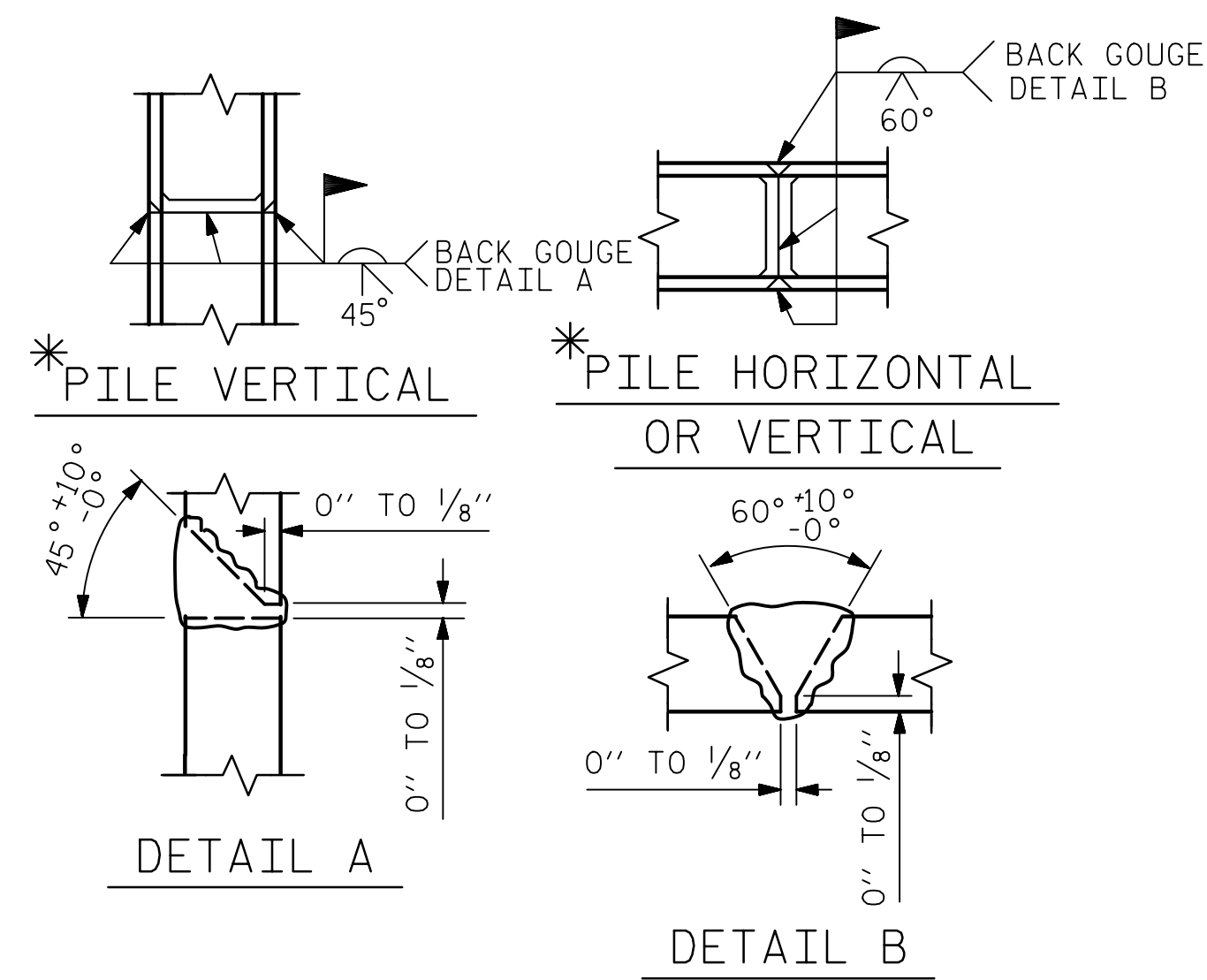


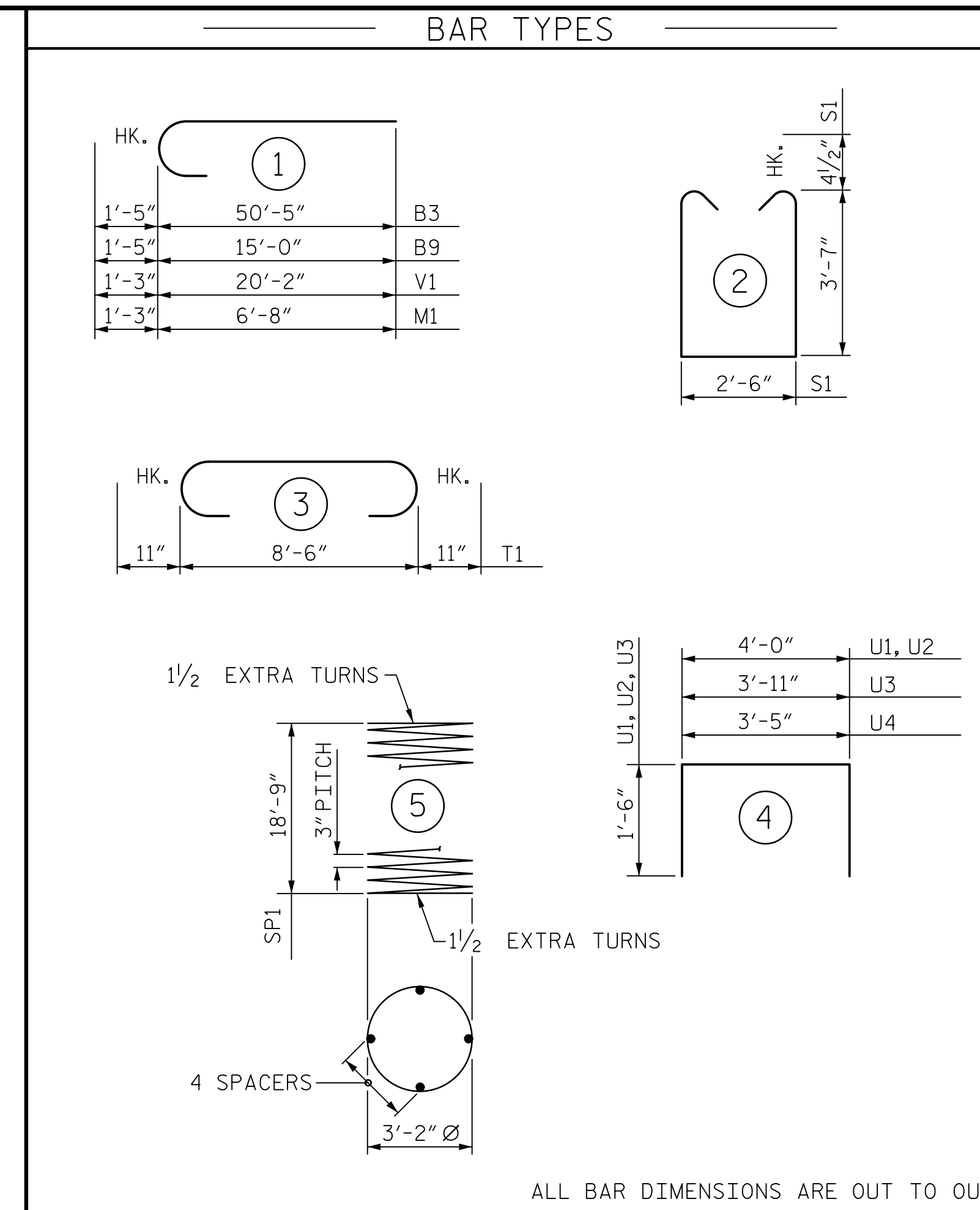
DATE: 1/19/2023
TIME: 10:34:14 AM

USER: rmeach
DIR: \\vnc\comnet\comnet\sa\AME\RA\leigh\USRAL3\Legacy\Projects\60436195-B-465A-000\Werk\910\CAD\YO_MCDOT_TIP\Structures\04_Drawing\2022_Updates\400_T9_540_B#654_SKI_BTL_3.dgn



PILE SPLICE DETAILS

* POSITION OF PILE DURING WELDING.



ALL BAR DIMENSIONS ARE OUT TO OUT

BILL OF MATERIAL STAGE 1						BILL OF MATERIAL STAGE 2					
BAR	No.	SIZE	TYPE	LENGTH	WEIGHT	BAR	No.	SIZE	TYPE	LENGTH	WEIGHT
B1	7	10	STR	50'-5"	1519	B7	7	10	STR	15'-1"	454
B2	12	5	STR	27'-2"	341	B8	6	5	STR	16'-1"	101
B3	8	10	1	51'-10"	1784	B9	8	10	1	17'-6"	602
B4	8	4	STR	21'-4"	114	B10	8	4	STR	4'-10"	26
B5	8	4	STR	15'-4"	82						
B6	8	4	STR	11'-6"	61	M1	12	9	1	7'-11"	323
M1	36	9	1	7'-11"	969	S1	38	5	2	10'-7"	402
S1	118	5	2	10'-7"	1249	T1	36	8	3	10'-4"	993
T1	108	8	3	10'-4"	2980	T2	22	6	STR	8'-6"	281
T2	66	6	STR	8'-6"	843	U1	24	4	4	7'-0"	112
U1	66	4	4	7'-0"	309	U2	5	4	4	7'-0"	23
U2	5	4	4	7'-0"	23	U3	5	4	4	6'-5"	21
U4	5	4	4	6'-11"	23	V1	12	9	1	21'-5"	874
V1	36	9	1	21'-5"	2621						
REINFORCING STEEL 12,918 LBS.						REINFORCING STEEL 4,212 LBS.					
SP-1	3	*	5	766'-0"	1535	SP-1	1	*	5	766'-0"	512
SPIRAL COLUMN REINFORCING STEEL 1535 LBS.						SPIRAL COLUMN REINFORCING STEEL 512 LBS.					
* THE SP-1 SPIRAL REINFORCING STEEL SHALL BE W20 OR D-20 COLD DRAWN WIRE OR #4 PLAIN OR DEFORMED BAR						* THE SP-1 SPIRAL REINFORCING STEEL SHALL BE W20 OR D-20 COLD DRAWN WIRE OR #4 PLAIN OR DEFORMED BAR					
CLASS A CONCRETE BREAKDOWN						CLASS A CONCRETE BREAKDOWN					
POUR #1 (FOOTINGS) 31.5 C.Y.						POUR #1 (FOOTINGS) 10.5 C.Y.					
POUR #2 (COLUMNS) 19.8 C.Y.						POUR #2 (COLUMNS) 6.6 C.Y.					
POUR #3 (CAP) 36.8 C.Y.						POUR #3 (CAP) 10.9 C.Y.					
TOTAL CLASS A CONCRETE 88.1 C.Y.						TOTAL CLASS A CONCRETE 28.0					
HP 12 X 53 STEEL PILES						HP 12 X 53 STEEL PILES					
NO. = 18 1080 LIN. FT.						NO. = 6 360 LIN. FT.					
STEEL PILE POINTS 18 EA.						STEEL PILE POINTS 6 EA.					
PILE REDRIVES 9 EA.						PILE REDRIVES 3 EA.					

PROJECT NO. B-4654
WAKE COUNTY
 STATION: 22+71.80 -L-

SHEET 3 OF 3

AECOM
 AECOM TECHNICAL SERVICES OF NC, INC.
 5438 WADE PARK BOULEVARD, SUITE 200
 RALEIGH, NC 27607
 (919) 854-6200 www.aecom.com
 AECOM License No. F-0342

SEAL
 NORTH CAROLINA PROFESSIONAL ENGINEER
 JOHN C. MORRISON
 1/19/2023

STATE OF NORTH CAROLINA
 DEPARTMENT OF TRANSPORTATION
 RALEIGH

SUBSTRUCTURE
 BENT 1

REVISIONS					
NO.	BY:	DATE:	NO.	BY:	DATE:
1			3		
2			4		

SHEET NO. S-40
 TOTAL SHEETS 49

DRAWN BY : T.B. STUMP DATE : 12/2018
 CHECKED BY : J.C. MORRISON DATE : 12/2018
 DESIGNED BY : T.B. STUMP DATE : 12/2018
 DESIGN CHECKED BY : J.C. MORRISON DATE : 12/2018

DOCUMENT NOT CONSIDERED FINAL UNLESS ALL SIGNATURES COMPLETED