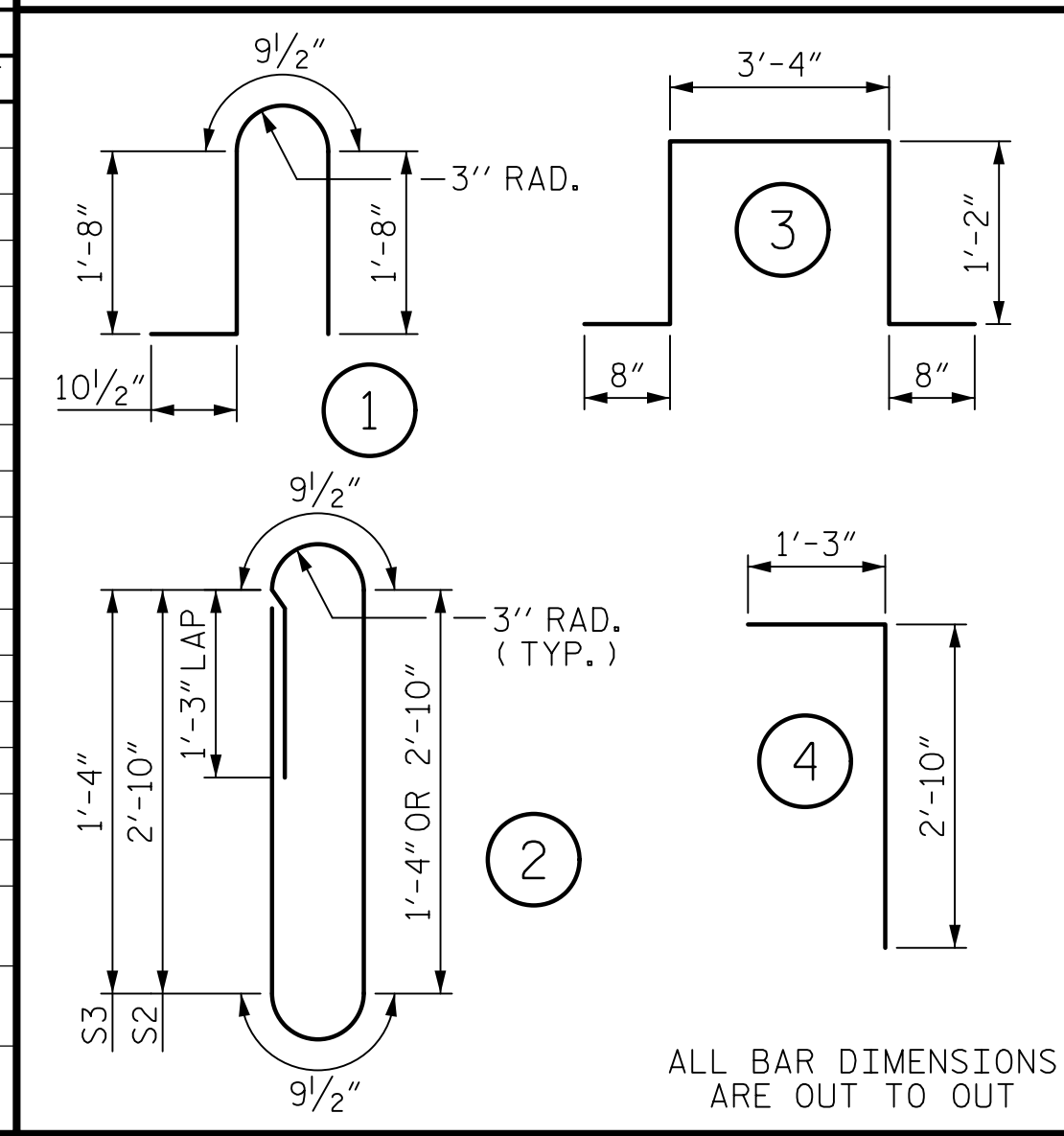


BILL OF MATERIAL

STAGE I						STAGE II					
BAR NO.	NO.	SIZE	TYPE	LENGTH	WEIGHT	BAR NO.	NO.	SIZE	TYPE	LENGTH	WEIGHT
*B1	2	5	STR	21'-8"	45	*B2	4	5	STR	31'-8"	132
*B2	4	5	STR	31'-8"	132	*B3	4	5	STR	34'-8"	145
*B3	4	5	STR	34'-8"	145	*B5	2	5	STR	22'-4"	47
*B4	2	5	STR	23'-4"	49	*B6	2	5	STR	22'-7"	47
*B7	2	7	STR	21'-8"	89	*B8	4	7	STR	31'-8"	129
*B8	4	7	STR	31'-8"	259	*B9	4	7	STR	34'-8"	283
*B9	4	7	STR	34'-8"	283	*B11	2	7	STR	22'-4"	183
*B10	2	7	STR	23'-4"	95	*B12	2	7	STR	22'-7"	92
*S1	224	4	1	5'-0"	748	*S1	224	4	1	5'-0"	748
*S2	224	4	2	8'-6"	1272	*S2	224	4	2	8'-6"	1272
*S3	12	4	2	5'-6"	44	*S3	12	4	2	5'-6"	44
*U1	24	4	3	7'-0"	112	*U1	24	4	3	7'-0"	112
*V1	24	4	4	4'-1"	65	*V1	24	4	4	4'-1"	65
* EPOXY COATED REINF. STEEL 3,338 LBS.						* EPOXY COATED REINF. STEEL 3,299 LBS.					
CLASS AA CONCRETE 25.7 CU. YDS.						CLASS AA CONCRETE 25.7 CU. YDS.					
CLASSIC CONCRETE BRIDGE RAIL 180.35 LIN. FT.						CLASSIC CONCRETE BRIDGE RAIL 180.35 LIN. FT.					

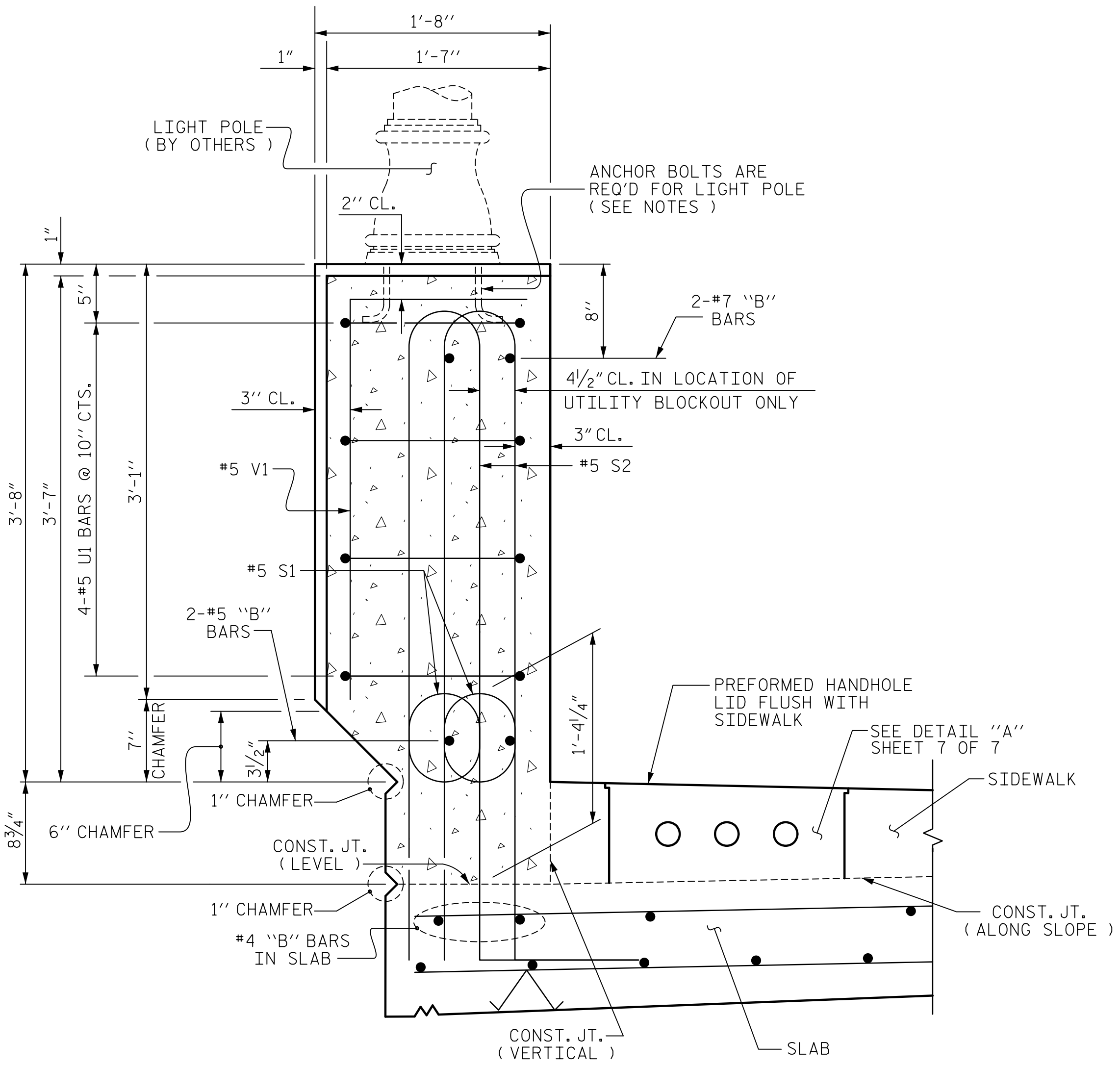
BAR TYPES



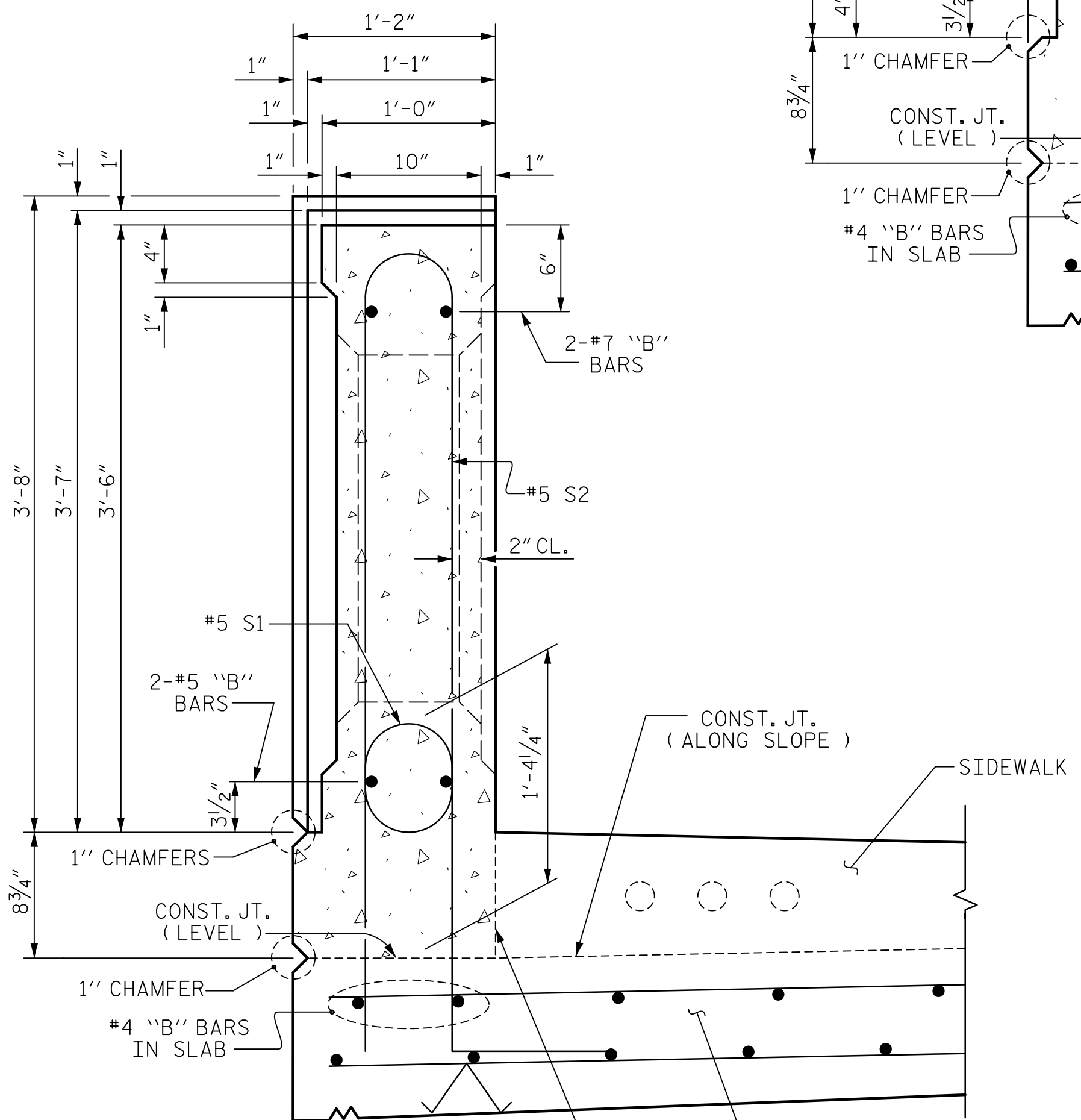
NOTES:  
 COORDINATE WITH TOWN OF GARNER FOR INSTALLATION OF ANCHOR BOLTS. ANCHOR BOLT SIZE AND LOCATION ARE TO BE AS SPECIFIED BY LIGHT POLE MANUFACTURER.  
 FOR LOCATION OF SECTIONS, SEE SHEET 2 OF 7.  
 FOR LOCATION OF #4S3 BARS, SEE SHEET 7 OF 7.

DATE: 10/20/22 TIME: 9:54:53 AM

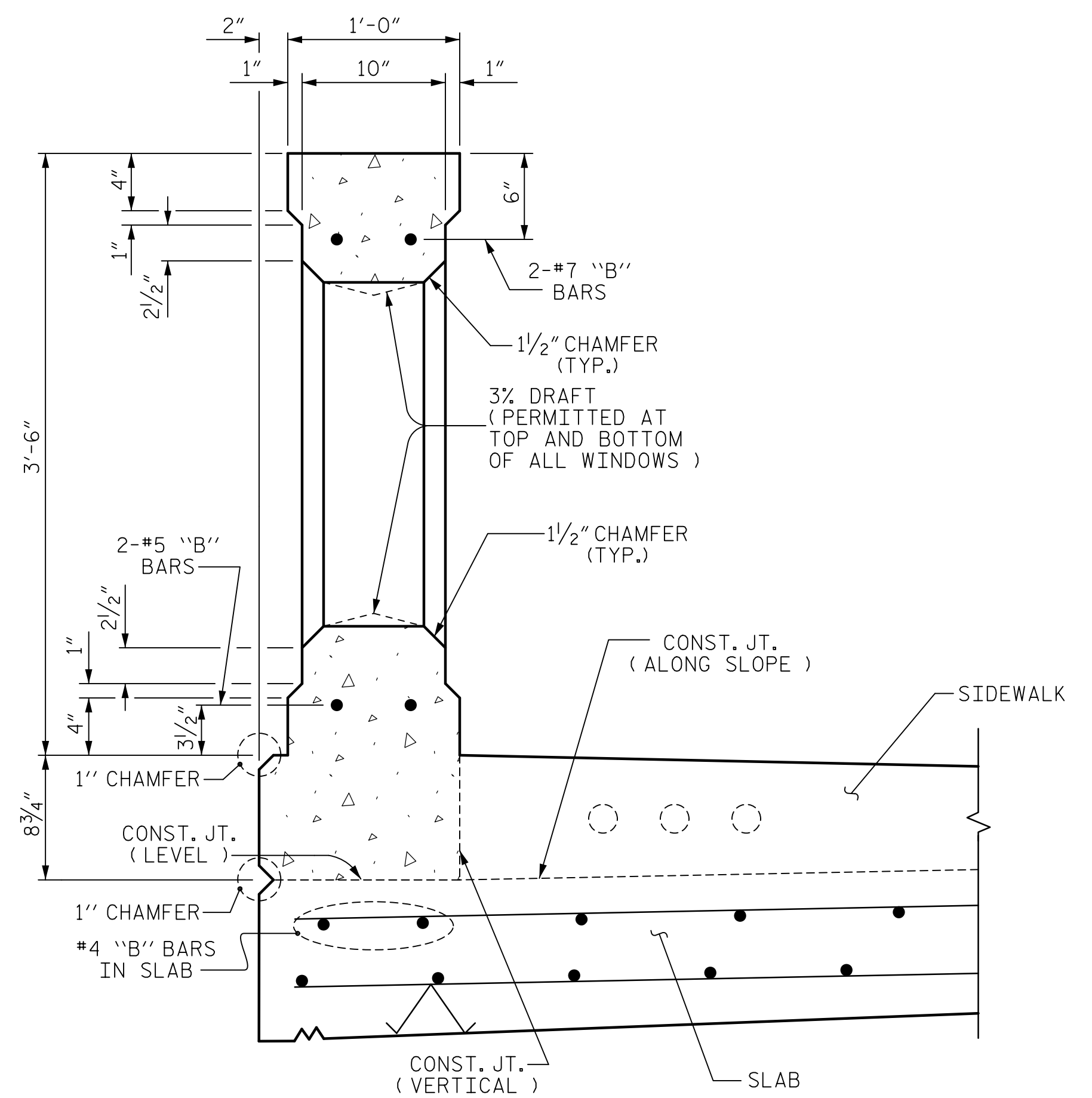
USER: muench V:\aecom\m\proj\60436195-B-4654-000\Ker\K910\CLC\AD\VO\_MCDOT\_TIP\Structures\04 Drawings\400\_49\_525\_B4654\_SML\CCB66.dgn



SECTION E-E  
 (SHOWING LIGHTING PILASTER)  
 (FOR LOCATION OF CONDUIT, SEE SHEET 7 OF 7)  
 (LEFT SIDE SHOWN, RIGHT SIDE SIMILAR)



SECTION F-F  
 (SHOWING JOINT IN PILASTER)  
 (LEFT SIDE SHOWN, RIGHT SIDE SIMILAR)



SECTION G-G  
 (SHOWING WINDOW OF RAIL)  
 (LEFT SIDE SHOWN, RIGHT SIDE SIMILAR)

\* SHOWN IN LEFT RAIL, COORDINATE LOCATION WITH ELECTRICAL PLANS.

PROJECT NO. B-4654  
WAKE COUNTY  
 STATION: 22+71.80 -L-  
 SHEET 6 OF 7



STATE OF NORTH CAROLINA  
 DEPARTMENT OF TRANSPORTATION  
 RALEIGH  
 SUPERSTRUCTURE  
 CLASSIC CONCRETE  
 BRIDGE RAIL  
 DETAILS

DRAWN BY : K. MUENCH DATE : 10/20/22  
 CHECKED BY : J.C. MORRISON DATE : 10/20/22  
 DESIGNED BY : K. MUENCH DATE : 10/20/22  
 DESIGN CHECKED BY : J.C. MORRISON DATE : 10/20/22

DOCUMENT NOT CONSIDERED FINAL UNLESS ALL SIGNATURES COMPLETED

REVISIONS						SHEET NO.
NO.	BY:	DATE:	NO.	BY:	DATE:	S-25
1			3			TOTAL SHEETS
2			4			49

1/19/2023