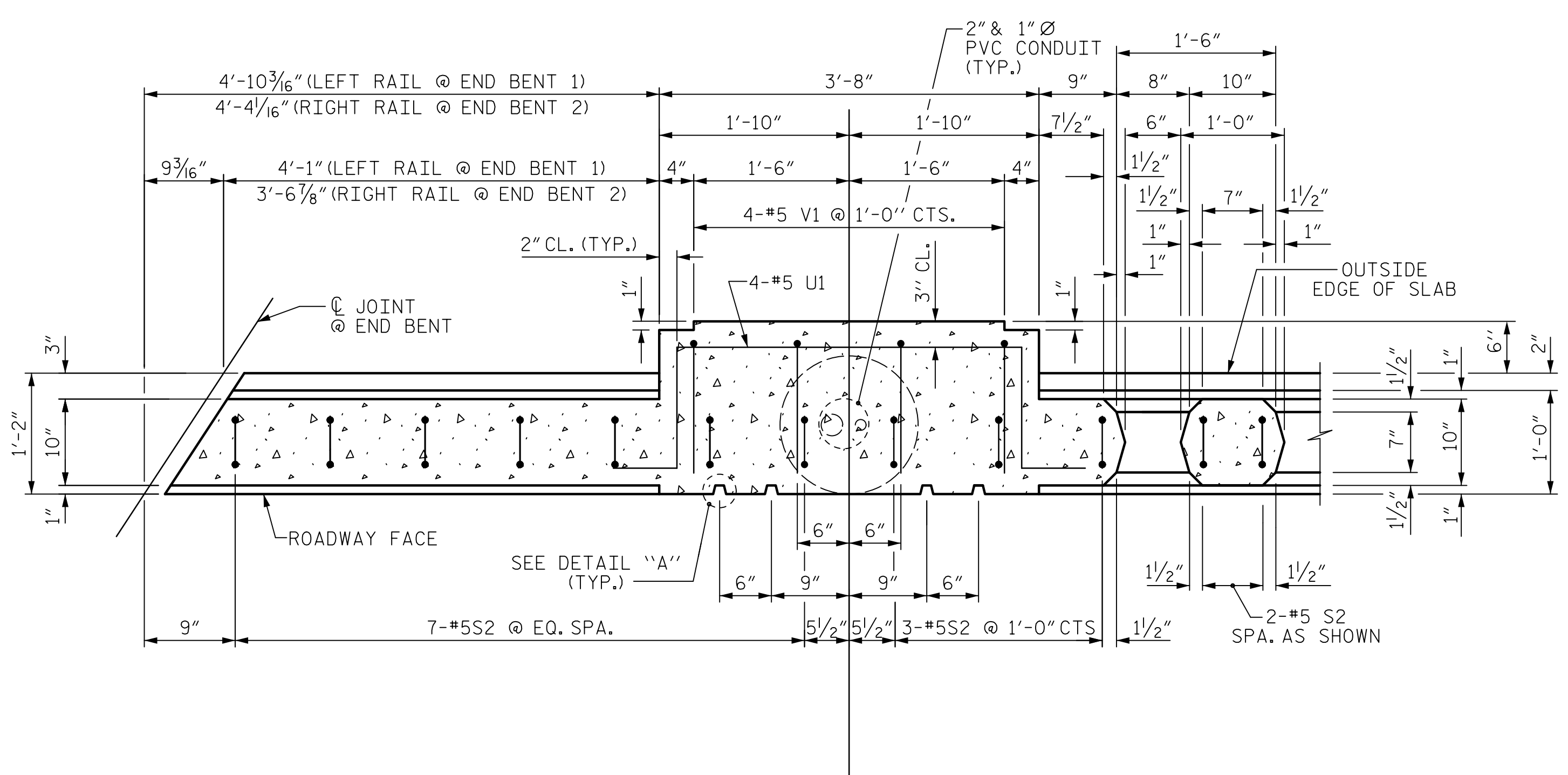
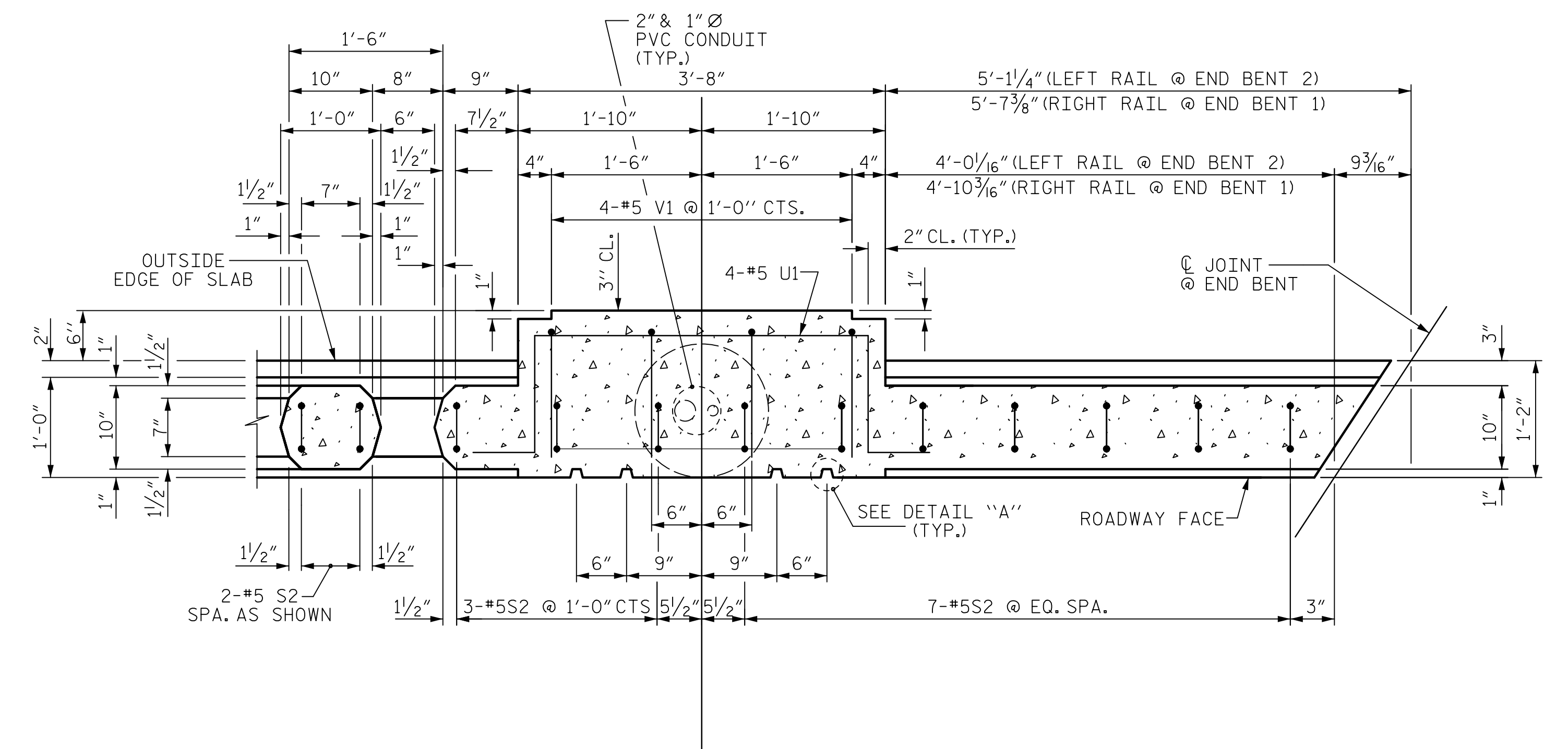


DATE: 10/19/2023
TIME: 9:56:54 AM

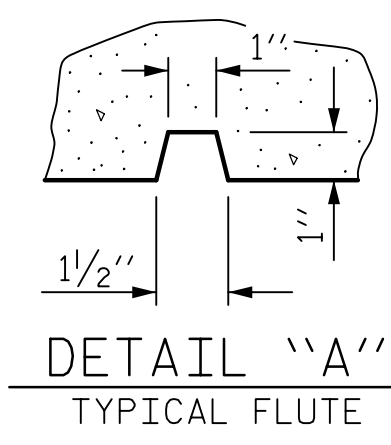
USER: research
DIR: \\vncorcom\com\fr\AMEFA\raleigh\USRAL3\loggy\Projects\60436195-B-465A-000\kwr\K910\CAD\VO_MCDOT_TIP\Structures\04_Drawing\2022_Updates\400_fr_524_B#54_SKU_LCB#55.dgn



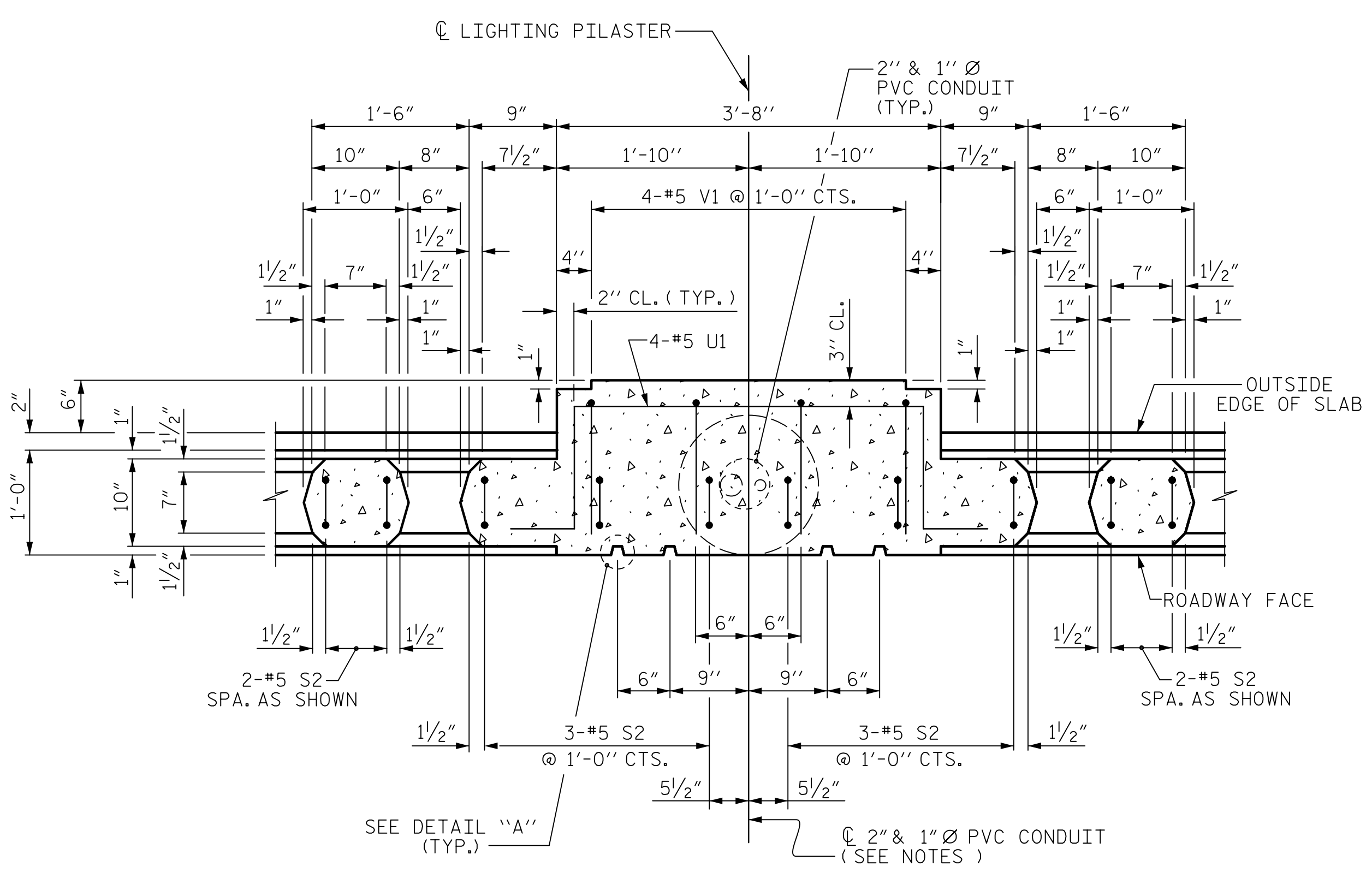
SECTION A-A
SHOWING LIGHTING PILASTER AT END BENT



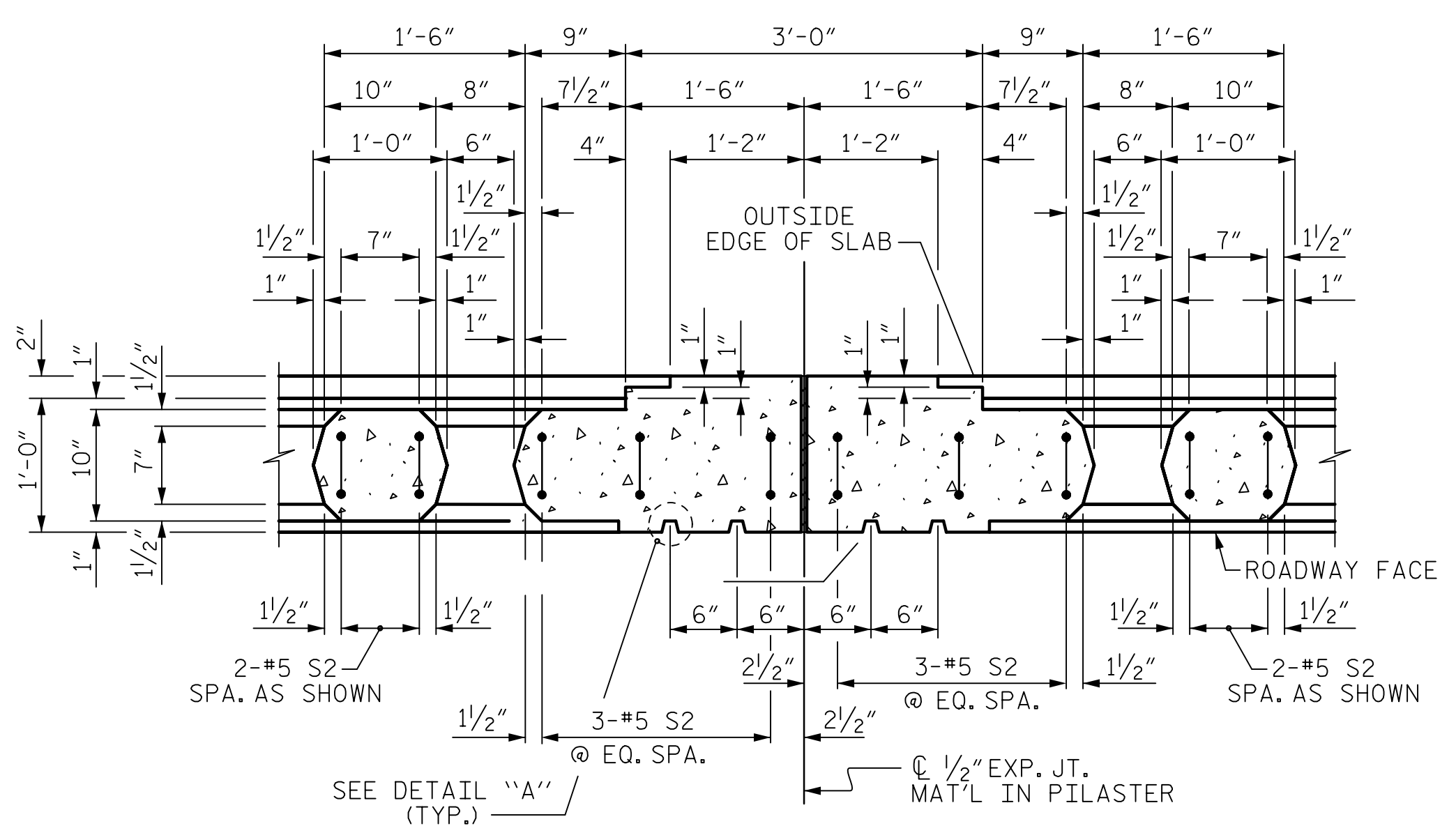
SECTION B-B
SHOWING LIGHTING PILASTER AT END BENT



DETAIL "A"
TYPICAL FLUTE



SECTION C-C
SHOWING LIGHTING PILASTER



SECTION D-D
SHOWING JOINT IN PILASTER

NOTES:
#5S1 BARS NOT SHOWN FOR CLARITY.
#5S2 BARS ARE PAIRED WITH #5S1 BARS.
FOR CONDUIT AND JUNCTION BOX DETAILS, SEE "ELECTRICAL CONDUIT SYSTEM" PLAN SHEET.
ANCHOR BOLTS FOR LIGHT POLE ARE REQUIRED IN LIGHTING PILASTER.

PROJECT NO. B-4654
WAKE COUNTY
STATION: 22+71.80 -L-

SHEET 5 OF 7

DRAWN BY : K. MUENCH DATE : 10/2022
CHECKED BY : J.C. MORRISON DATE : 10/2022
DESIGNED BY : K. MUENCH DATE : 10/2022
DESIGN CHECKED BY : J.C. MORRISON DATE : 10/2022

DOCUMENT NOT CONSIDERED
FINAL UNLESS ALL
SIGNATURES COMPLETED

AECOM
AECOM TECHNICAL SERVICES OF NC, INC.
5438 WADE PARK BOULEVARD, SUITE 200
RALEIGH, NC 27607
(919) 854-6200 www.aecom.com
AECOM License No. F-0342

PROFESSIONAL ENGINEER
NORTH CAROLINA
SEAL
030474
John C. Morrison
JOHN C. MORRISON

1/19/2023

STATE OF NORTH CAROLINA DEPARTMENT OF TRANSPORTATION RALEIGH					
SUPERSTRUCTURE CLASSIC CONCRETE BRIDGE RAIL DETAILS					
REVISIONS					
NO.	BY:	DATE:	NO.	BY:	DATE:
1			3		
2			4		
SHEET NO. S-24					TOTAL SHEETS 49