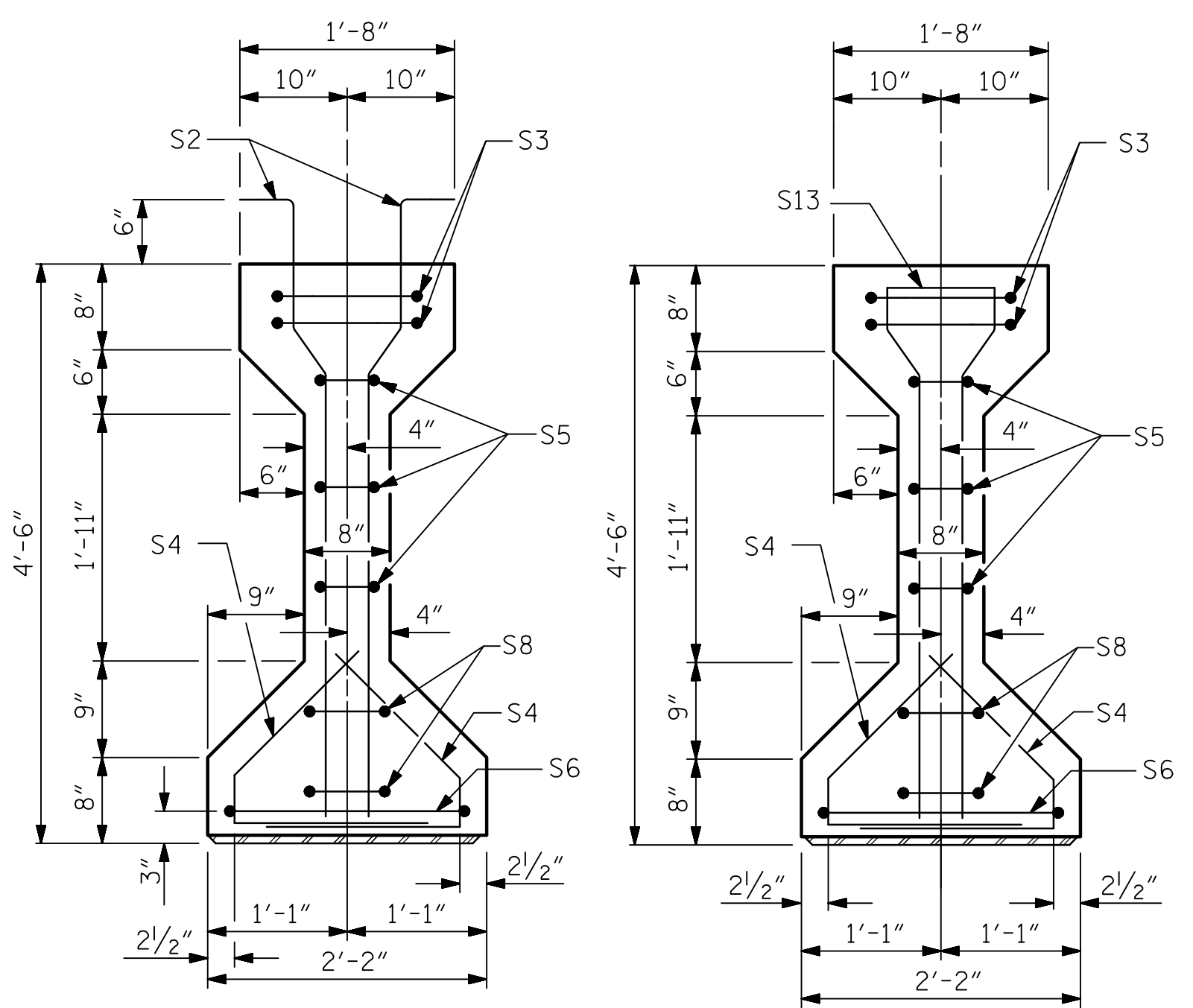


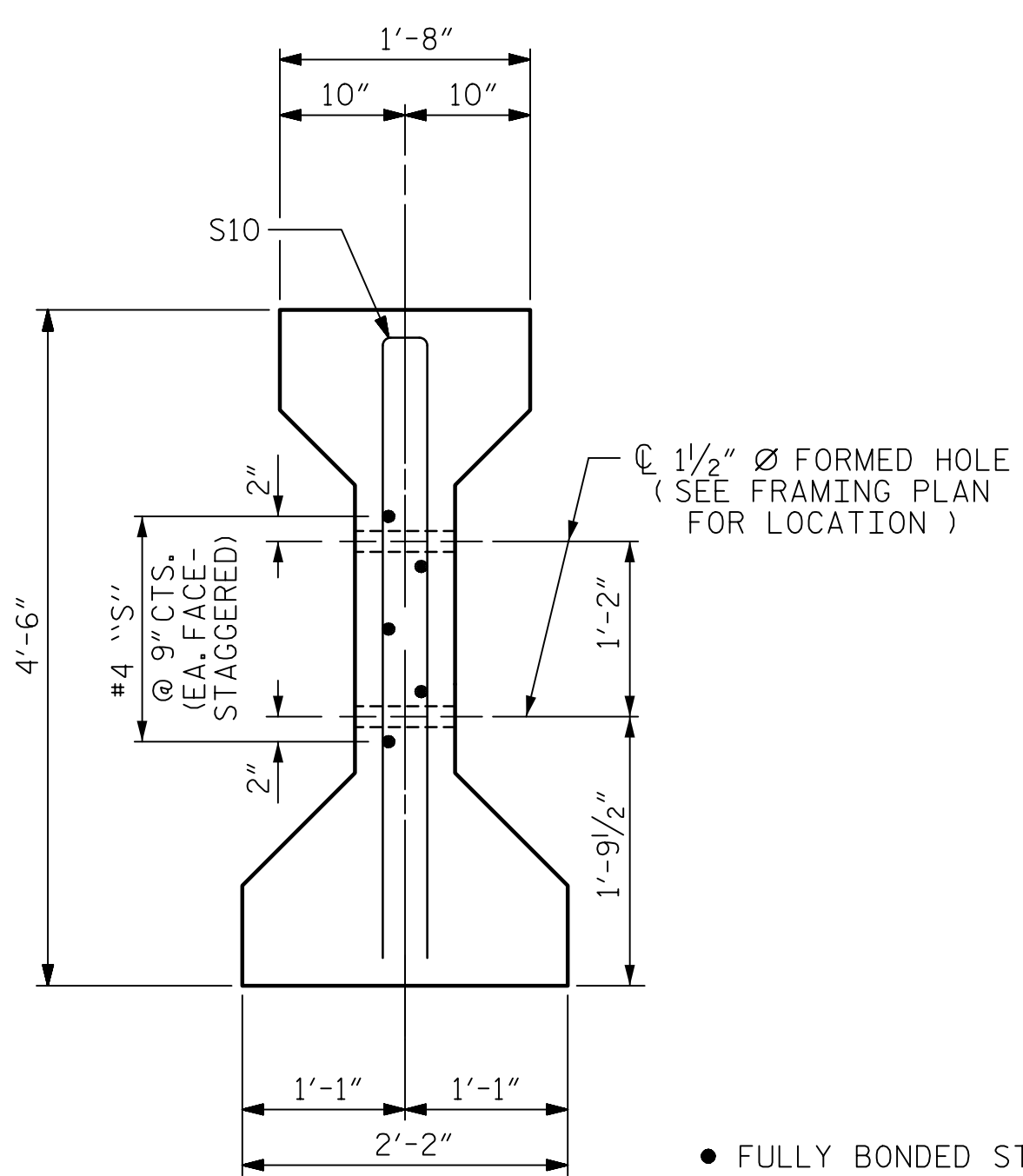
DATE: 1/19/2023
TIME: 9:36:47 AM

USER: vjw@acorn.com V:\AMEFA\ Raleigh\USRAL3\Utility\Projects\60436195-B-465A\GDR\K910\CAD\YO_MCDOT_TIP\Structures\04_Drawing\2022_Updates\400_31_S16_B465A_LSMU_PCG4.dgn



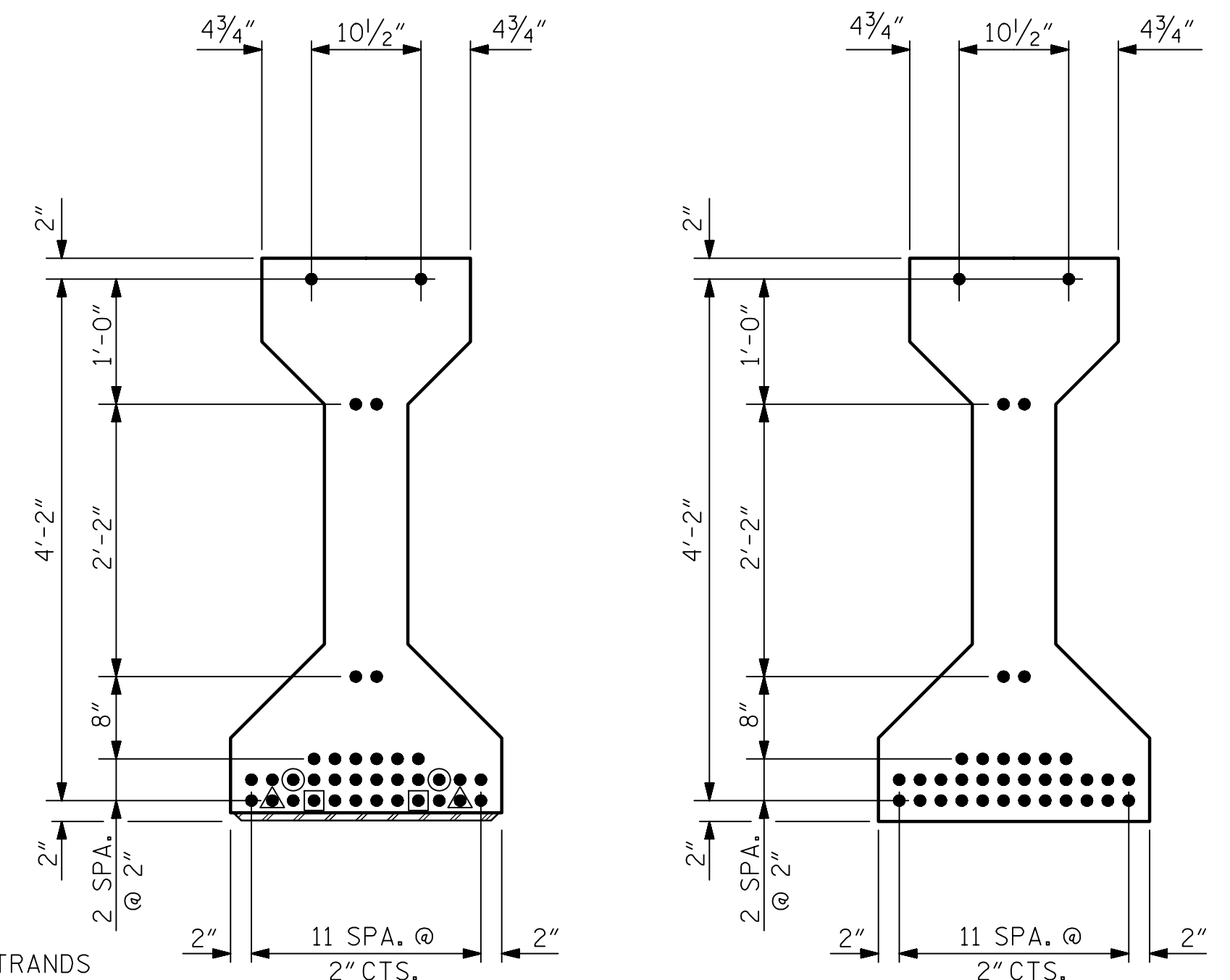
SECTION A-A

SECTION B-B



SECTION C-C
(S1 BARS NOT SHOWN)

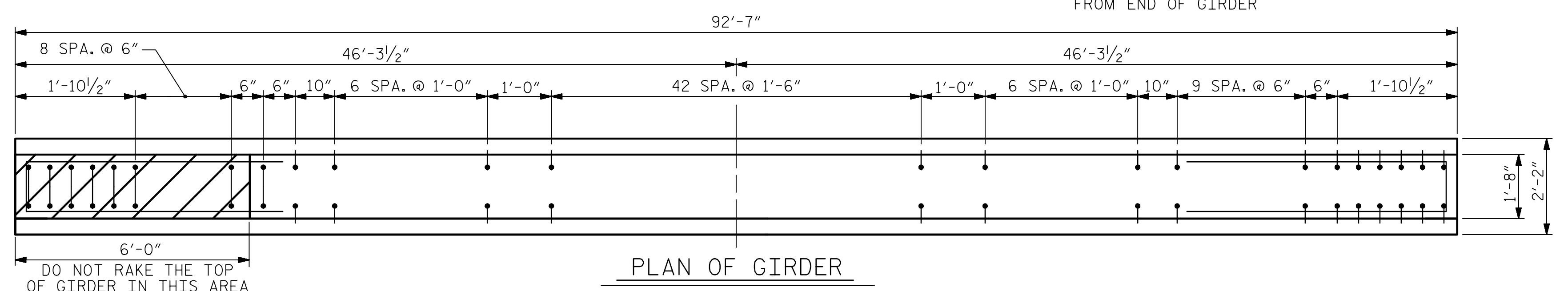
- FULLY BONDED STRANDS
- STRANDS DEBONDED FOR 8'-0" FROM END OF GIRDER
- ▲ STRANDS DEBONDED FOR 4'-0" FROM END OF GIRDER
- ◎ STRANDS DEBONDED FOR 12'-0" FROM END OF GIRDER



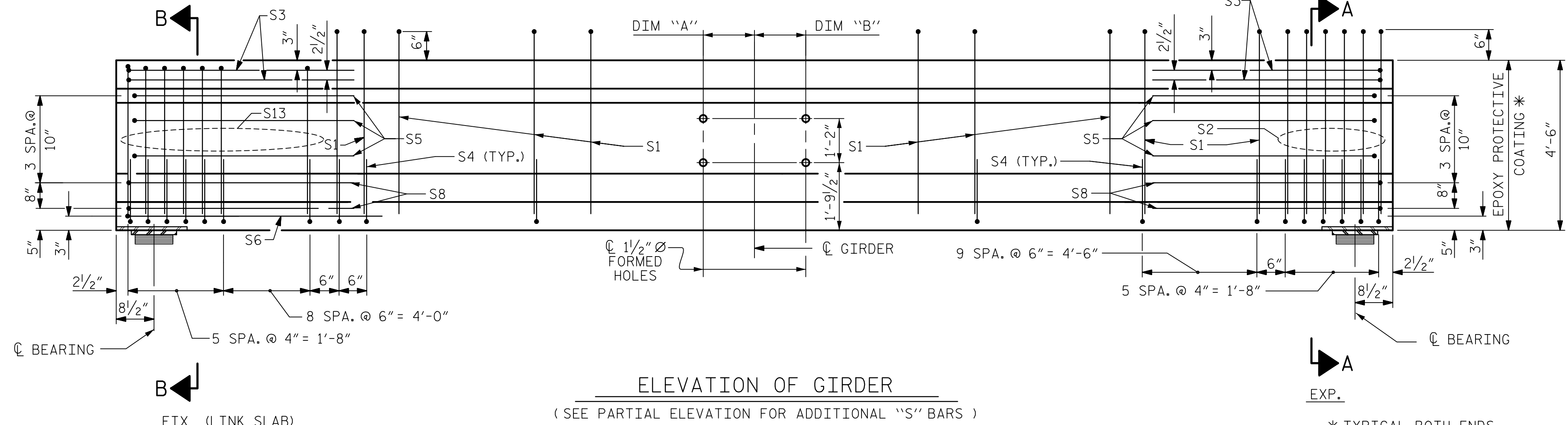
AT END OF GIRDER

AT C OF GIRDER

0.6" Ø LOW RELAXATION STRAND LAYOUT

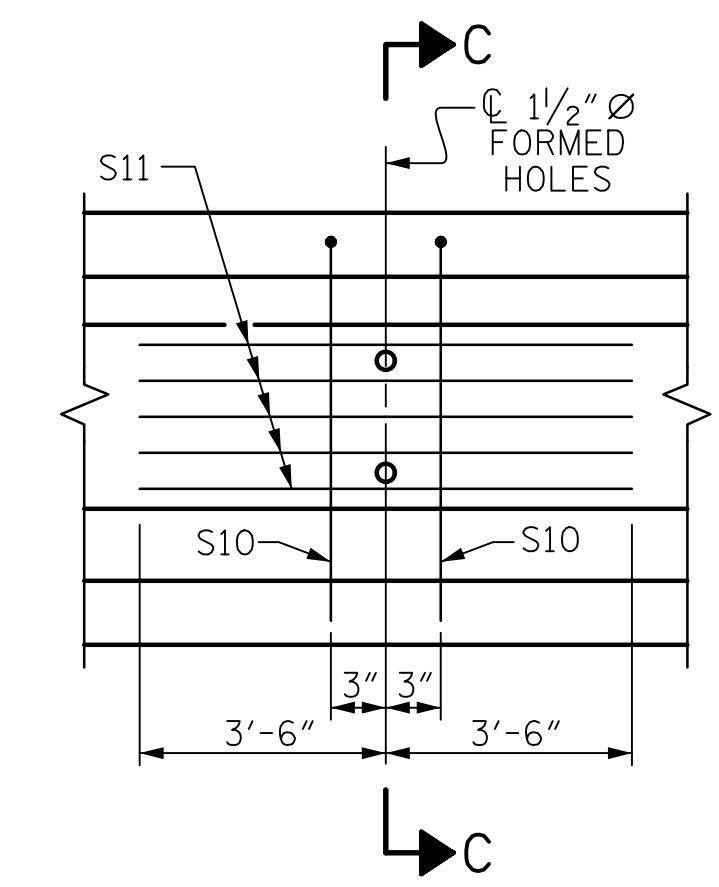


PLAN OF GIRDER



ELEVATION OF GIRDER

(SEE PARTIAL ELEVATION FOR ADDITIONAL "S" BARS)



PARTIAL ELEVATION

SHOWING INTERMEDIATE DIAPHRAGM REINFORCING STEEL FOR GIRDER Nos. 5 & 6

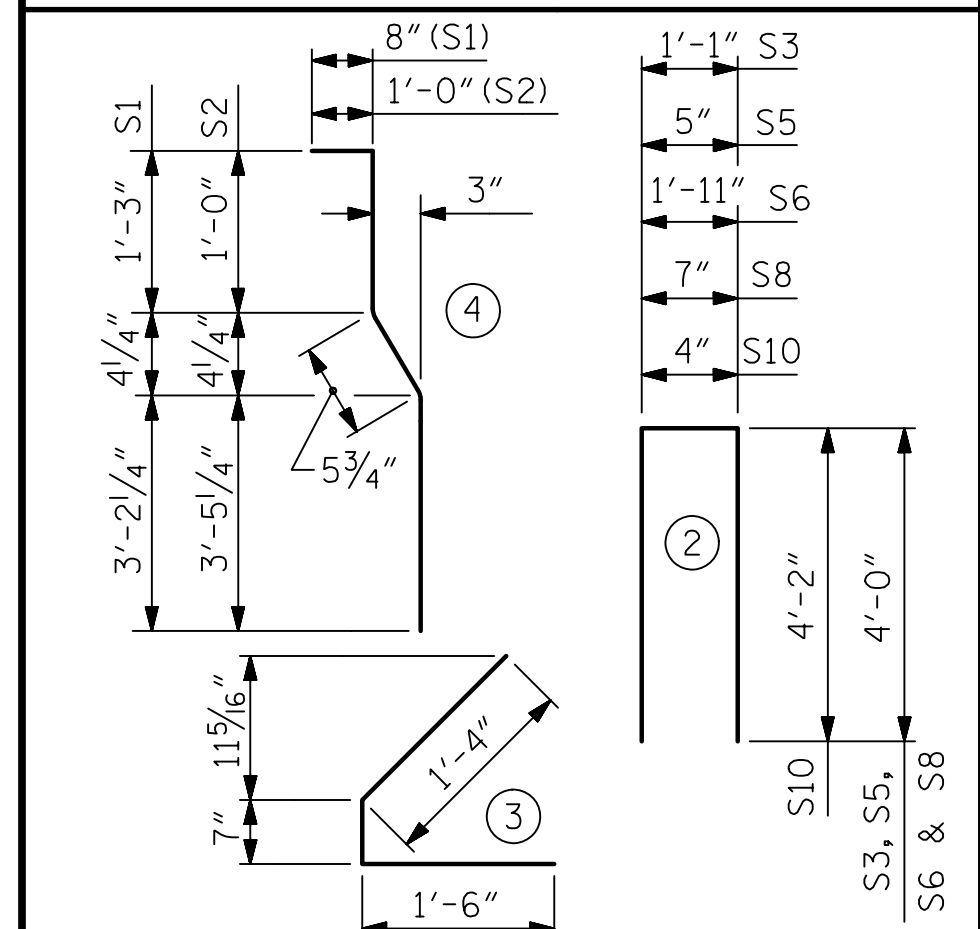
1/2" FORMED HOLE LOCATIONS		
	DIM "A"	DIM "B"
GDR. 5	-	3'-0 7/16"
GDR. 6	3'-0 7/16"	-

0.6" Ø L. R. GRADE 270 STRANDS		
AREA (SQUARE INCHES)	ULTIMATE STRENGTH (LBS. PER STRAND)	APPLIED PRESTRESS (LBS. PER STRAND)
0.217	58,600	43,950

REINFORCING STEEL FOR ONE GIRDER					
BAR	NUMBER	SIZE	TYPE	LENGTH	WEIGHT
S1	138	#4	4	5'-7"	485
S2	12	#6	4	5'-11"	107
S3	4	#4	2	9'-1"	24
S4	64	#4	3	3'-5"	146
S5	6	#4	2	8'-5"	34
S6	2	#4	2	9'-11"	13
S8	4	#4	2	8'-7"	23
S10	2	#5	2	8'-8"	18
S10	4	#5	2	8'-8"	36
S11	5	#4	STR	7'-0"	23
S12	5	#4	STR	13'-2"	44
S13	14	#6	1**	9'-4"	196

** FOR S13 BEND DIAGRAM, SEE SHEET S-13

ALL BAR DIMENSIONS ARE OUT-TO-OUT

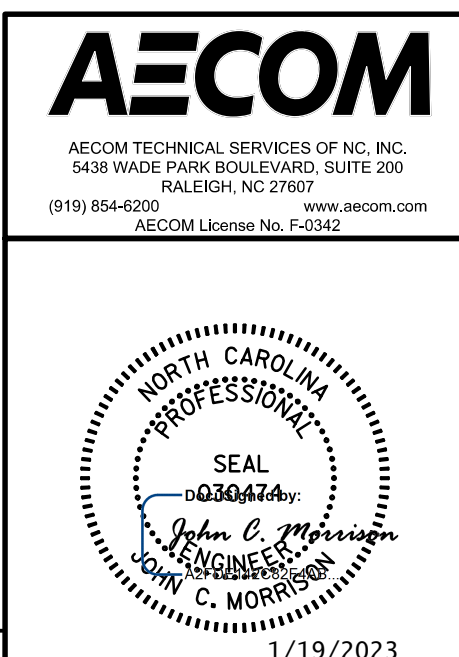


QUANTITIES FOR ONE GIRDER			
	REINFORCING STEEL LB.	7000 PSI CONCRETE C.Y.	0.6" Ø L. R. STRANDS No.
GDR. 5 & 6	1055	18.8	36

GIRDERS REQUIRED		
NUMBER	LENGTH	TOTAL LENGTH
2	92'-7"	185'-2"

PROJECT NO. B-4654
WAKE COUNTY
STATION: 22+71.80 -L-

SHEET 3 OF 5



STATE OF NORTH CAROLINA
DEPARTMENT OF TRANSPORTATION
RALEIGH
STANDARD
AASHTO TYPE IV
PRESTRESSED CONCRETE GIRDER
LINK SLAB
(SPAN B, GIRDERS 5 & 6)

REVISIONS						SHEET NO.
NO.	BY:	DATE:	NO.	BY:	DATE:	S-16
1			3			TOTAL SHEETS
2			4			49

DOCUMENT NOT CONSIDERED FINAL UNLESS ALL SIGNATURES COMPLETED

ASSEMBLED BY : K. MUENCH	DATE : 05/2022
CHECKED BY : J.C. MORRISON	DATE : 05/2022
DRAWN BY : BNB 09/21	REV. ---
CHECKED BY : AAI 09/21	REV. ---