

Prepared In the Office of:

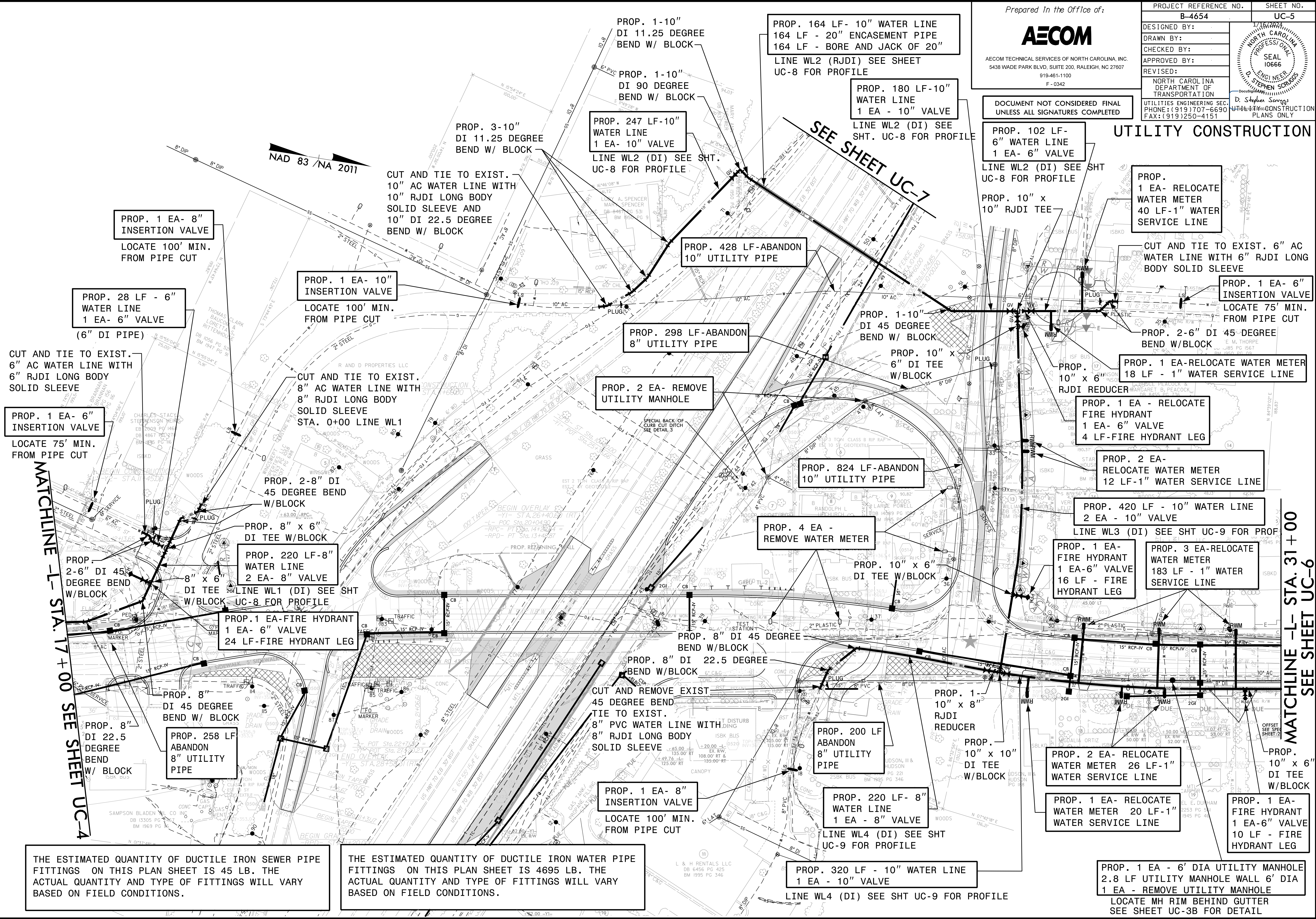


AECOM TECHNICAL SERVICES OF NORTH CAROLINA, INC.
5438 WADE PARK BLVD, SUITE 200, RALEIGH, NC 27607
919-461-1100
F-0342

PROJECT REFERENCE NO. B-4654	SHEET NO. UC-5
DESIGNED BY:	
DRAWN BY:	
CHECKED BY:	
APPROVED BY:	
REVISED:	
NORTH CAROLINA DEPARTMENT OF TRANSPORTATION UTILITIES ENGINEERING SEC. PHONE: (919) 707-6690 FAX: (919) 250-4151	

DOCUMENT NOT CONSIDERED FINAL UNLESS ALL SIGNATURES COMPLETED

UTILITY CONSTRUCTION



THE ESTIMATED QUANTITY OF DUCTILE IRON SEWER PIPE FITTINGS ON THIS PLAN SHEET IS 45 LB. THE ACTUAL QUANTITY AND TYPE OF FITTINGS WILL VARY BASED ON FIELD CONDITIONS.

THE ESTIMATED QUANTITY OF DUCTILE IRON WATER PIPE FITTINGS ON THIS PLAN SHEET IS 4695 LB. THE ACTUAL QUANTITY AND TYPE OF FITTINGS WILL VARY BASED ON FIELD CONDITIONS.

PROP. 320 LF - 10" WATER LINE
1 EA - 10" VALVE
LINE WL4 (DI) SEE SHT UC-9 FOR PROFILE

PROP. 1 EA - 6" DIA UTILITY MANHOLE
2.8 LF UTILITY MANHOLE WALL
6" DIA
1 EA - REMOVE UTILITY MANHOLE
LOCATE MH RIM BEHIND GUTTER
SEE SHEET UC-3B FOR DETAIL

DATE: 1/16/2024
TIME: 2:39:33 PM
DGN: B4654_UC_151005.dgn