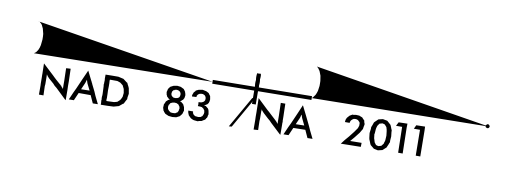
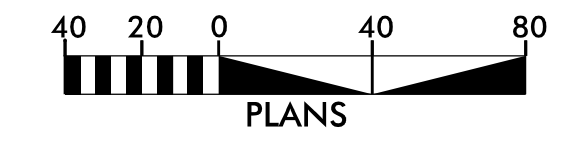
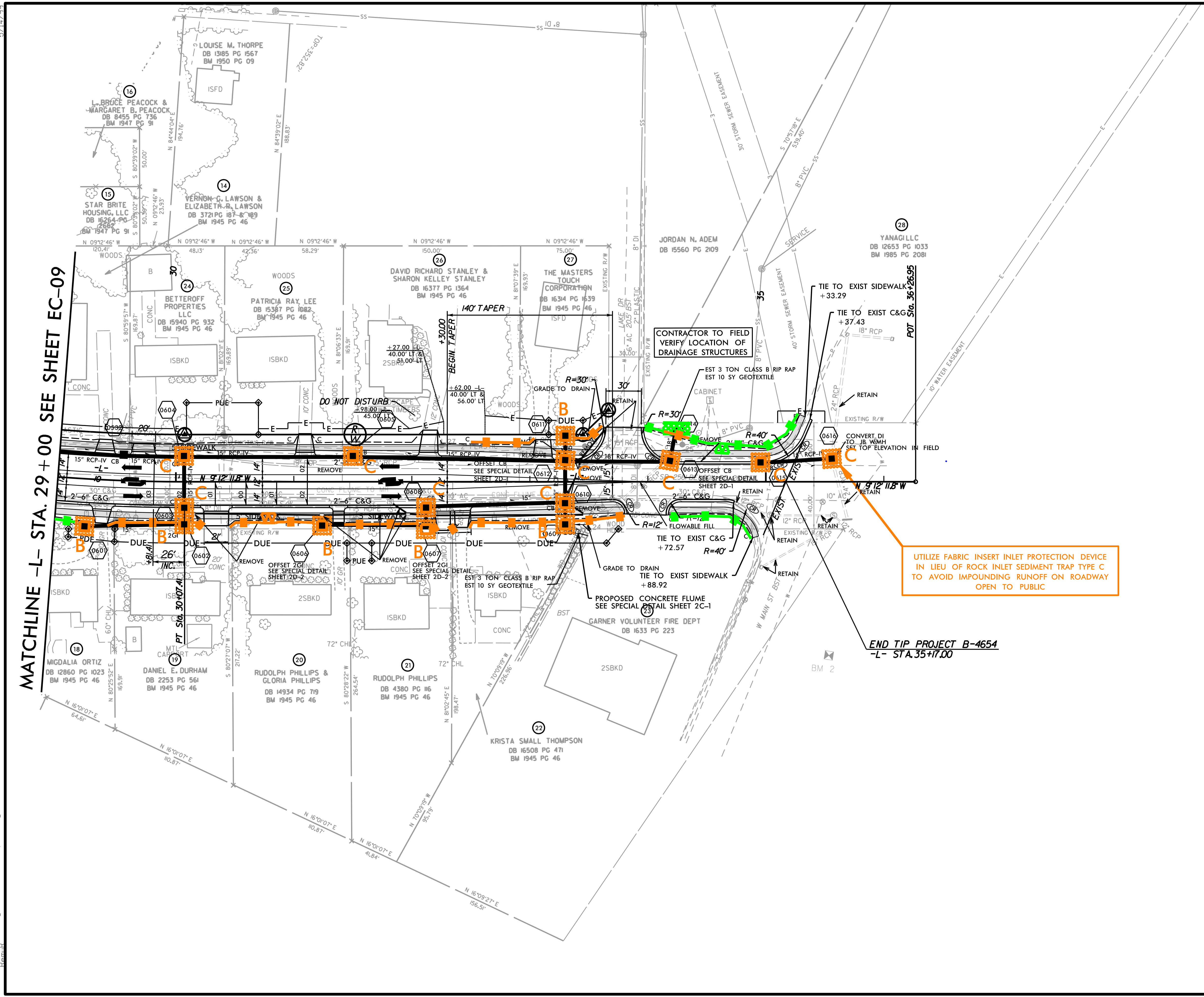


PROJECT REFERENCE NO.	SHEET NO.
B-4654	EC-10/CONST.6
R/W SHEET NO.	
Prepared in the Office of:	
<b>AECOM</b>	NC FIRM LICENSE No F-0342 5438 Wade Park Boulevard, Suite 200 Raleigh, NC 27607 +1-919-461-0000



MATCHLINE -L- STA. 29 + 00 SEE SHEET EC-09



UTILIZE FABRIC INSERT INLET PROTECTION DEVICE IN LIEU OF ROCK INLET SEDIMENT TRAP TYPE C TO AVOID IMPOUNDING RUNOFF ON ROADWAY OPEN TO PUBLIC

END TIP PROJECT B-4654  
-L- STA. 35 + 17.00

NOTE: ALL DRIVEWAYS ARE 16' UNLESS OTHERWISE NOTED  
FOR -L- PROFILE SEE SHEET 8

R:\Environment\Design\B4654\_rev.ECpsht(0).dgn 11/16/19 AM 10:11:11