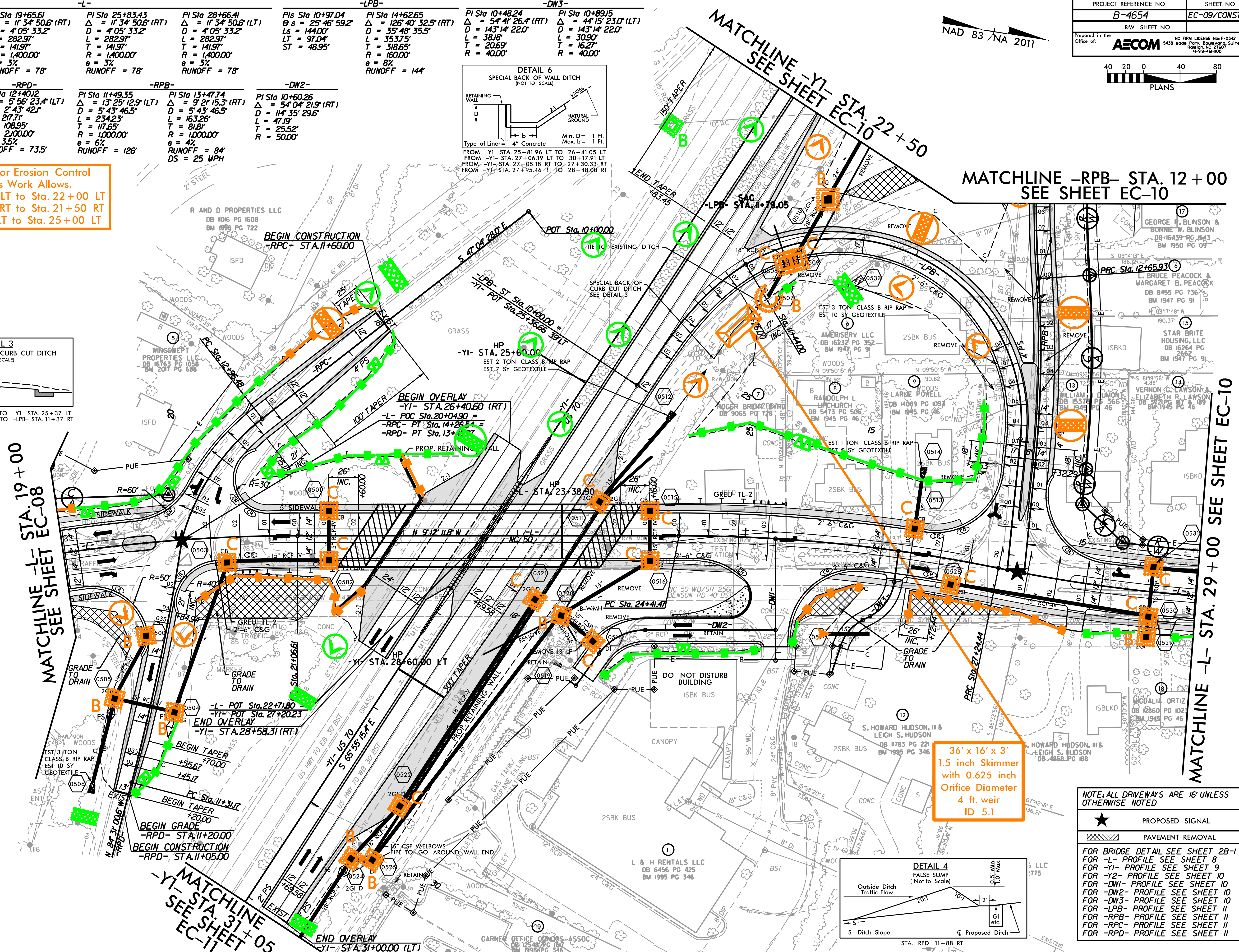
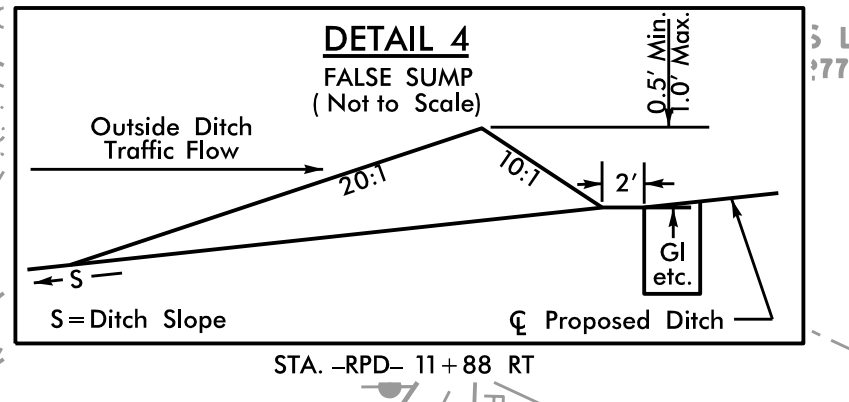
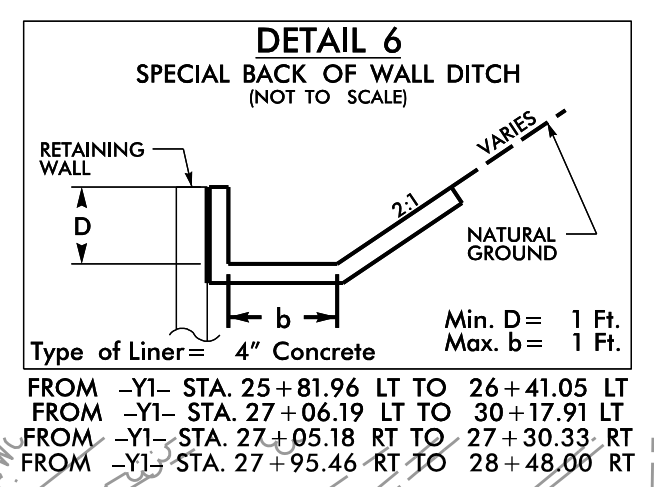
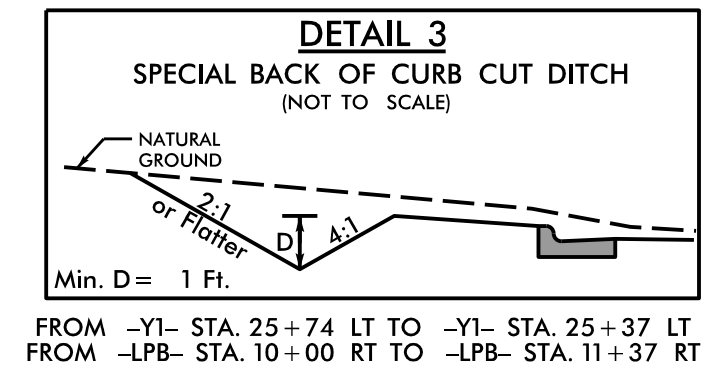




-L-		-LPB-		-DW3-	
PI Sta 16+82.64 Δ = 11°34'50.6" (LT) D = 4'05" 33.2" L = 282.97' T = 141.97' R = 1,400.00' e = 3% RUNOFF = 78'	PI Sta 19+65.61 Δ = 11°34'50.6" (RT) D = 4'05" 33.2" L = 282.97' T = 141.97' R = 1,400.00' e = 3% RUNOFF = 78'	PI Sta 25+83.43 Δ = 11°34'50.6" (RT) D = 4'05" 33.2" L = 282.97' T = 141.97' R = 1,400.00' e = 3% RUNOFF = 78'	PI Sta 28+66.41 Δ = 11°34'50.6" (LT) D = 4'05" 33.2" L = 282.97' T = 141.97' R = 1,400.00' e = 3% RUNOFF = 78'	PI Sta 10+97.04 θ s = 25°46'59.2" Ls = 144.00' LT = 97.04' ST = 48.95'	PI Sta 14+62.65 Δ = 126°40'32.5" (RT) D = 35'48" 35.5" L = 38.375' T = 318.65' R = 160.00' e = 8% RUNOFF = 144'
-RPC-		-RPD-		-DW2-	
PI Sta 13+63.90 Δ = 37°15'31.6" (LT) D = 28'38" 52.4" L = 130.06' T = 67.42' R = 200.00' DS = 25 MPH	PI Sta 12+40.12 Δ = 5°56'23.4" (LT) D = 2'43" 42.1" L = 217.71' T = 108.95' R = 2,100.00' e = 3.5% RUNOFF = 73.5'	PI Sta 11+49.35 Δ = 13°25'12.9" (LT) D = 5'43" 46.5" L = 234.23' T = 117.65' R = 1,000.00' e = 6% RUNOFF = 126'	PI Sta 13+47.74 Δ = 9°21'15.3" (RT) D = 5'43" 46.5" L = 163.26' T = 81.81' R = 1,000.00' e = 4% RUNOFF = 84' DS = 25 MPH	PI Sta 10+60.26 Δ = 54°04'21.9" (RT) D = 114'35" 29.6" L = 47.19' T = 25.52' R = 50.00'	PI Sta 10+48.24 Δ = 54°41'26.4" (RT) D = 143'14" 22.0" L = 38.18' T = 206.9' R = 40.00'

Place Matting for Erosion Control on Slope as Work Allows.
 -L- Sta. 20+70 LT to Sta. 22+00 LT
 -L- Sta. 21+00 RT to Sta. 21+50 RT
 -L- Sta. 24+20 LT to Sta. 25+00 LT



36' x 16' x 3'
1.5 inch Skimmer
with 0.625 inch
Orifice Diameter
4 ft. weir
ID 5.1

NOTE: ALL DRIVEWAYS ARE 16' UNLESS OTHERWISE NOTED

★ PROPOSED SIGNAL

PAVEMENT REMOVAL

FOR BRIDGE DETAIL SEE SHEET 2B-1
 FOR -L- PROFILE SEE SHEET 8
 FOR -Y1- PROFILE SEE SHEET 9
 FOR -Y2- PROFILE SEE SHEET 10
 FOR -DW1- PROFILE SEE SHEET 10
 FOR -DW2- PROFILE SEE SHEET 10
 FOR -DW3- PROFILE SEE SHEET 10
 FOR -LPB- PROFILE SEE SHEET 11
 FOR -RPB- PROFILE SEE SHEET 11
 FOR -RPC- PROFILE SEE SHEET 11
 FOR -RPD- PROFILE SEE SHEET 11