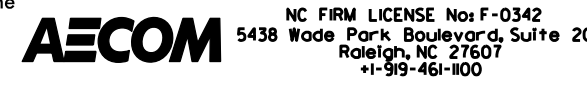
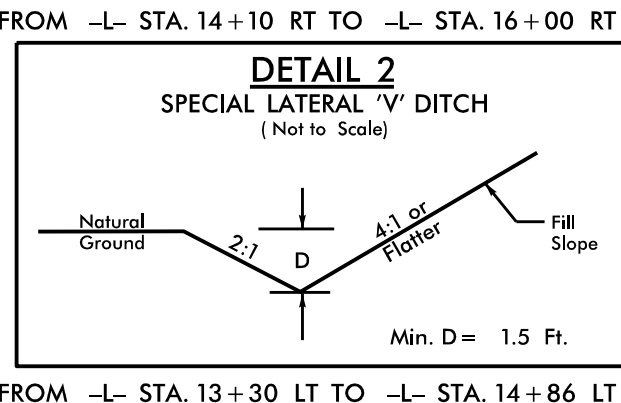
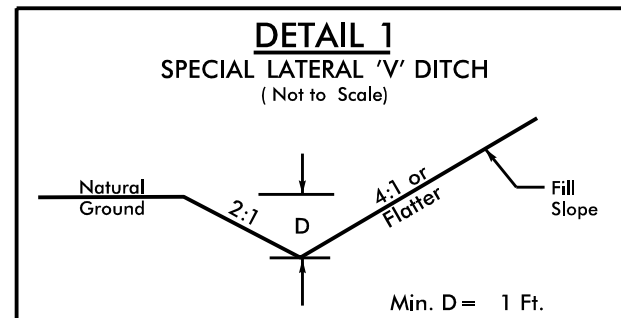


**-L-**  
 PI Sta 16+82.64  
 $\Delta = 17' 34" 50.6" (LT)$   
 $D = 4' 05" 33.2"$   
 $L = 282.97'$   
 $T = 141.97'$   
 $R = 1,400.00'$   
 $e = 3\%$   
 RUNOFF = 78'

**-Y2-**  
 PI Sta 12+51.86  
 $\Delta = 38' 18" 32.2" (LT)$   
 $D = 52' 05" 13.5"$   
 $L = 73.55'$   
 $T = 38.21'$   
 $R = 110.00'$   
 DS = 20 MPH

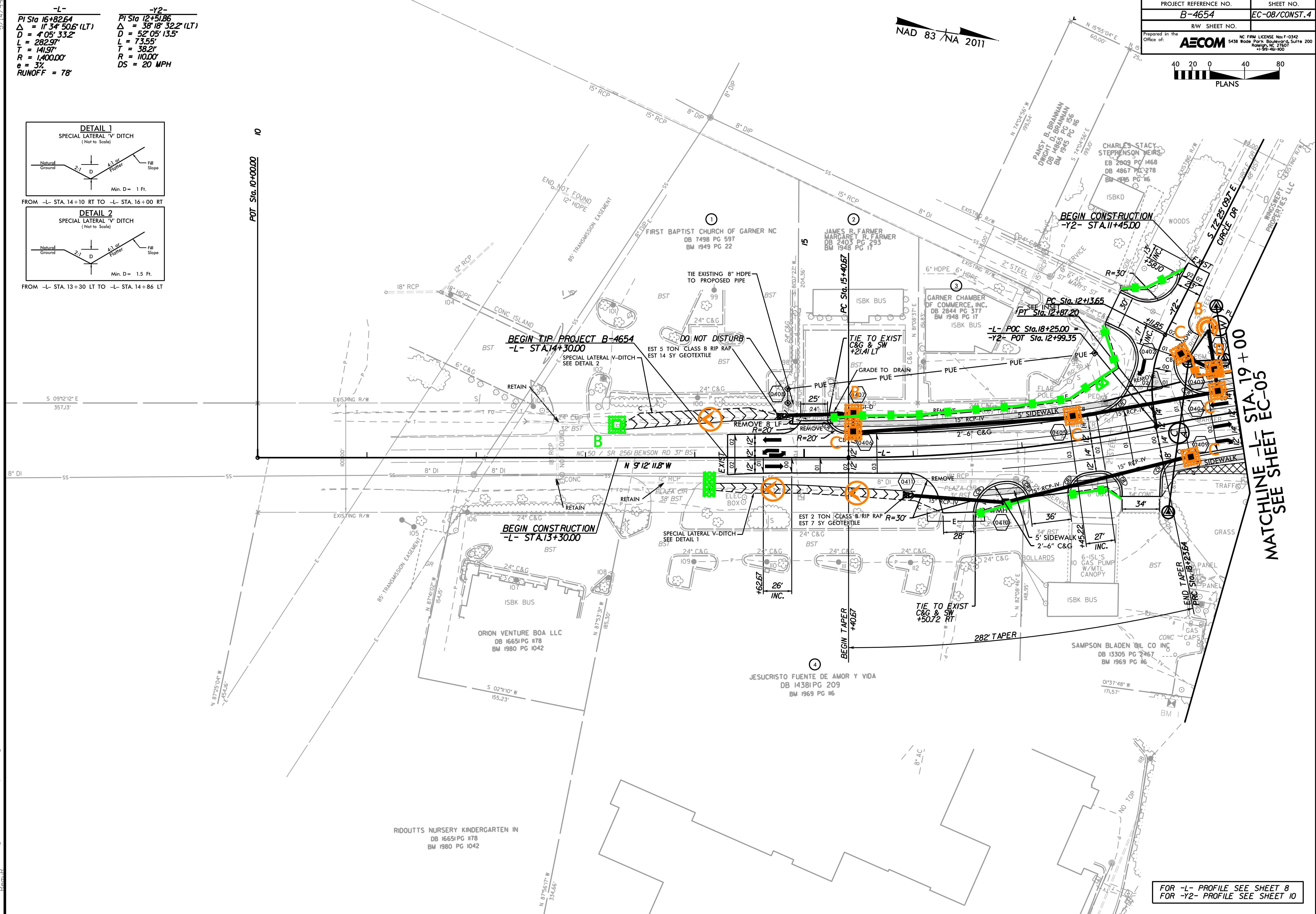
PROJECT REFERENCE NO.	SHEET NO.
B-4654	EC-08/CONST.4
RW SHEET NO.	
Prepared in the Office of:	
	
<small>NC FIRM LICENSE No F-0342        5438 Wade Park Boulevard, Suite 200        Raleigh, NC 27607        +1-919-461-0000</small>	



FROM -L- STA. 14+10 RT TO -L- STA. 16+00 RT

FROM -L- STA. 13+30 LT TO -L- STA. 14+86 LT

POT Sta. 10+00.00 10



MATCHLINE -L- STA. 19+00  
 EC-05  
 SHEET  
 SEE SHEET

FOR -L- PROFILE SEE SHEET 8  
 FOR -Y2- PROFILE SEE SHEET 10