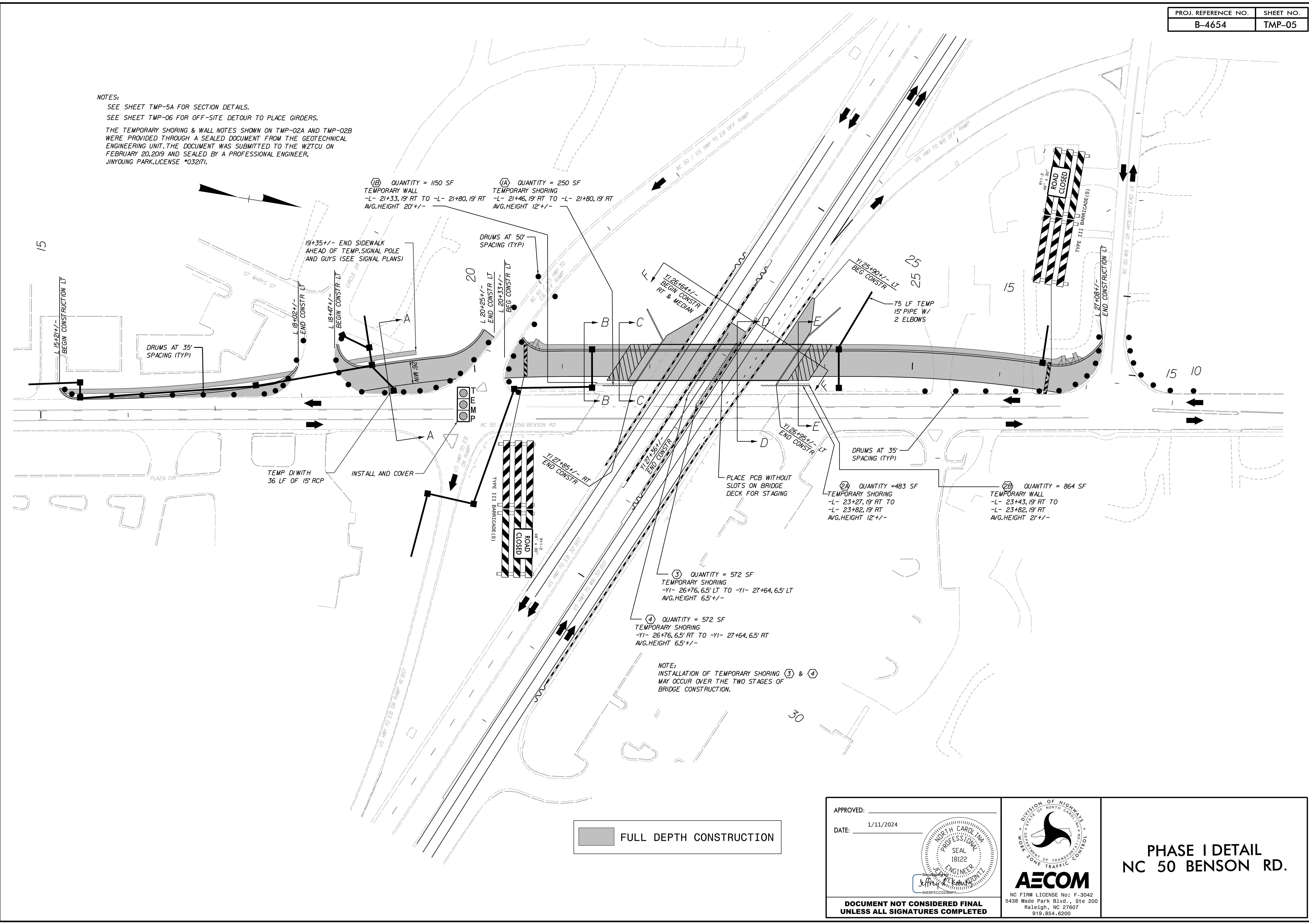


NOTES:
 SEE SHEET TMP-5A FOR SECTION DETAILS.
 SEE SHEET TMP-06 FOR OFF-SITE DETOUR TO PLACE GIRDERS.
 THE TEMPORARY SHORING & WALL NOTES SHOWN ON TMP-02A AND TMP-02B WERE PROVIDED THROUGH A SEALED DOCUMENT FROM THE GEOTECHNICAL ENGINEERING UNIT. THE DOCUMENT WAS SUBMITTED TO THE WZTCU ON FEBRUARY 20, 2019 AND SEALED BY A PROFESSIONAL ENGINEER, JINYOUNG PARK, LICENSE #032171.



1/11/2024
 L:\Legacy\Projects\60436195-B-4654\900_CAD\70_CAD\70_NGD01_TIP\TrafficControl\CP\Current_files\B4654_TC_TMP_05_PhaseI.dgn
 pattrick.mcpherson

■ FULL DEPTH CONSTRUCTION

APPROVED: _____
 DATE: 1/11/2024

**DOCUMENT NOT CONSIDERED FINAL
 UNLESS ALL SIGNATURES COMPLETED**

NC FIRM LICENSE No: F-3042
 5438 Wade Park Blvd., Ste 200
 Raleigh, NC 27607
 919.854.6200

**PHASE I DETAIL
 NC 50 BENSON RD.**