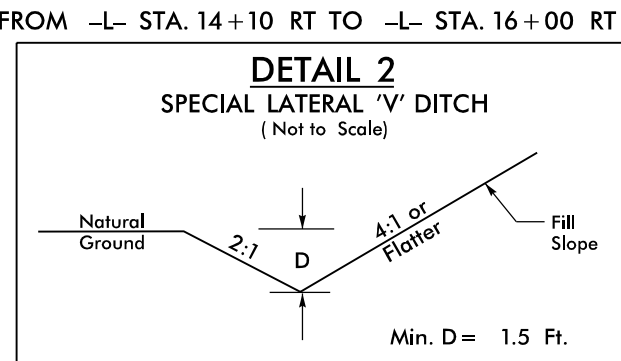
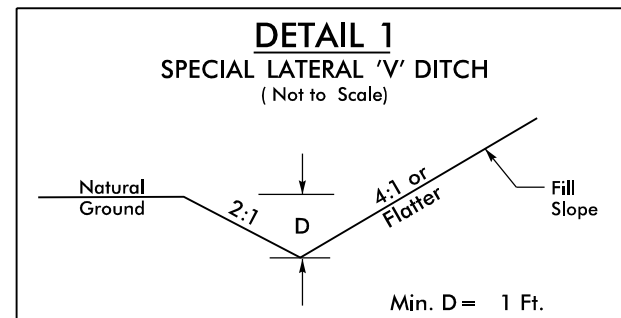


PROJECT REFERENCE NO. B-4654	SHEET NO. 4
ROADWAY DESIGN ENGINEER 5/24/2023 NORTH CAROLINA PROFESSIONAL SEAL 18470 EDWARD GLENN EDWARDS, JR.	HYDRAULICS ENGINEER 5/24/2023 NORTH CAROLINA PROFESSIONAL SEAL 037863 MORRIS B. BUSCH
DOCUMENT NOT CONSIDERED FINAL UNLESS ALL SIGNATURES COMPLETED	

-L-
 PI Sta 16+82.64
 $\Delta = 11' 34" 50.6' (LT)$
 $D = 4' 05" 33.2'$
 $L = 282.97'$
 $T = 141.97'$
 $R = 1,400.00'$
 $e = 3\%$
 RUNOFF = 78'

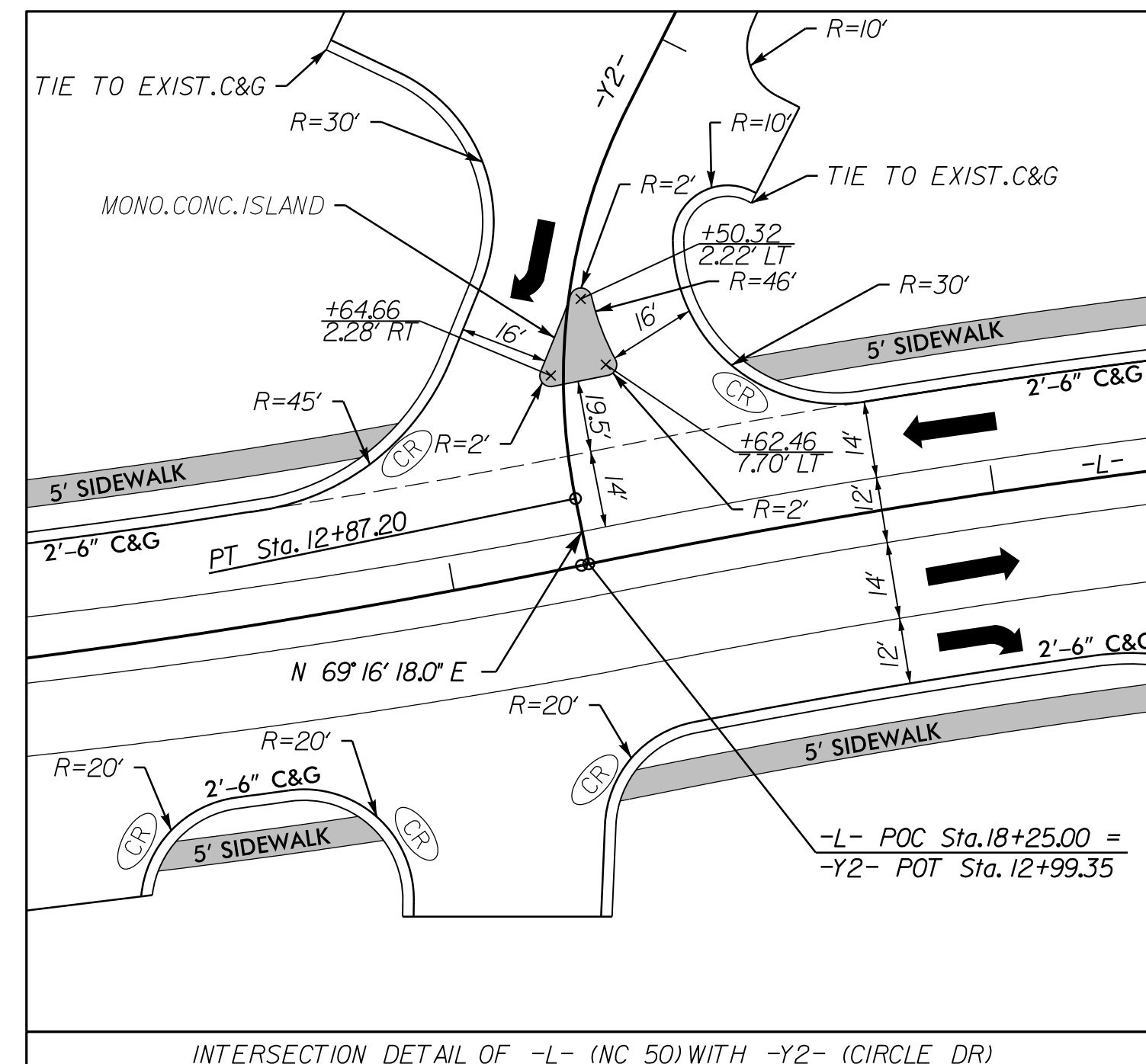
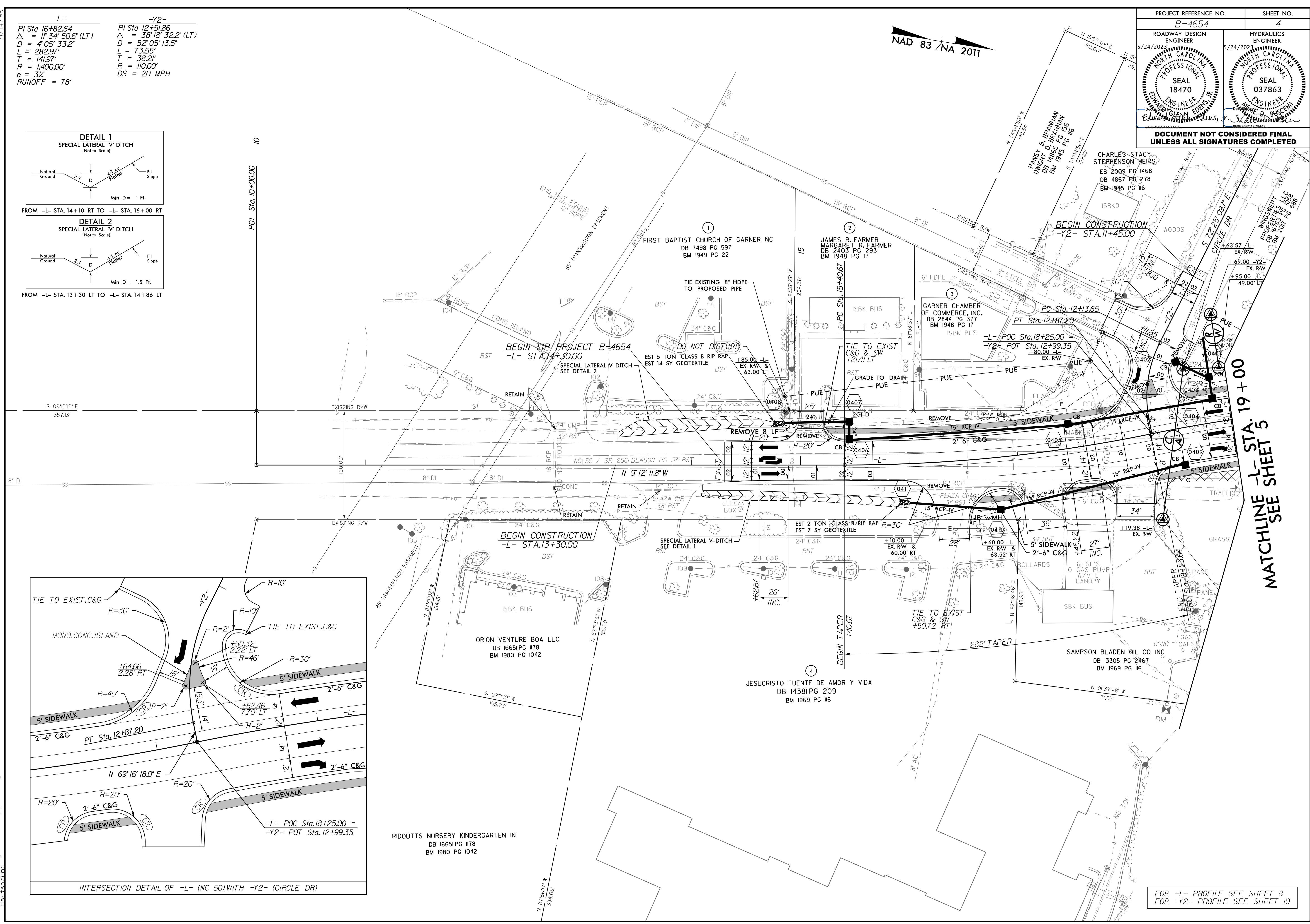
-Y2-
 PI Sta 12+51.86
 $\Delta = 38' 18" 32.2' (LT)$
 $D = 52' 05" 13.5'$
 $L = 73.55'$
 $T = 38.21'$
 $R = 110.00'$
 DS = 20 MPH



FROM -L- STA. 14+10 RT TO -L- STA. 16+00 RT

FROM -L- STA. 13+30 LT TO -L- STA. 14+86 LT

REVISIONS



MATCHLINE SEE SHEET 5

FOR -L- PROFILE SEE SHEET 8
FOR -Y2- PROFILE SEE SHEET 10

R:\2023\05\24\2023\B-4654-rd-j_esh04.dgn