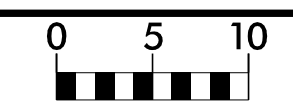
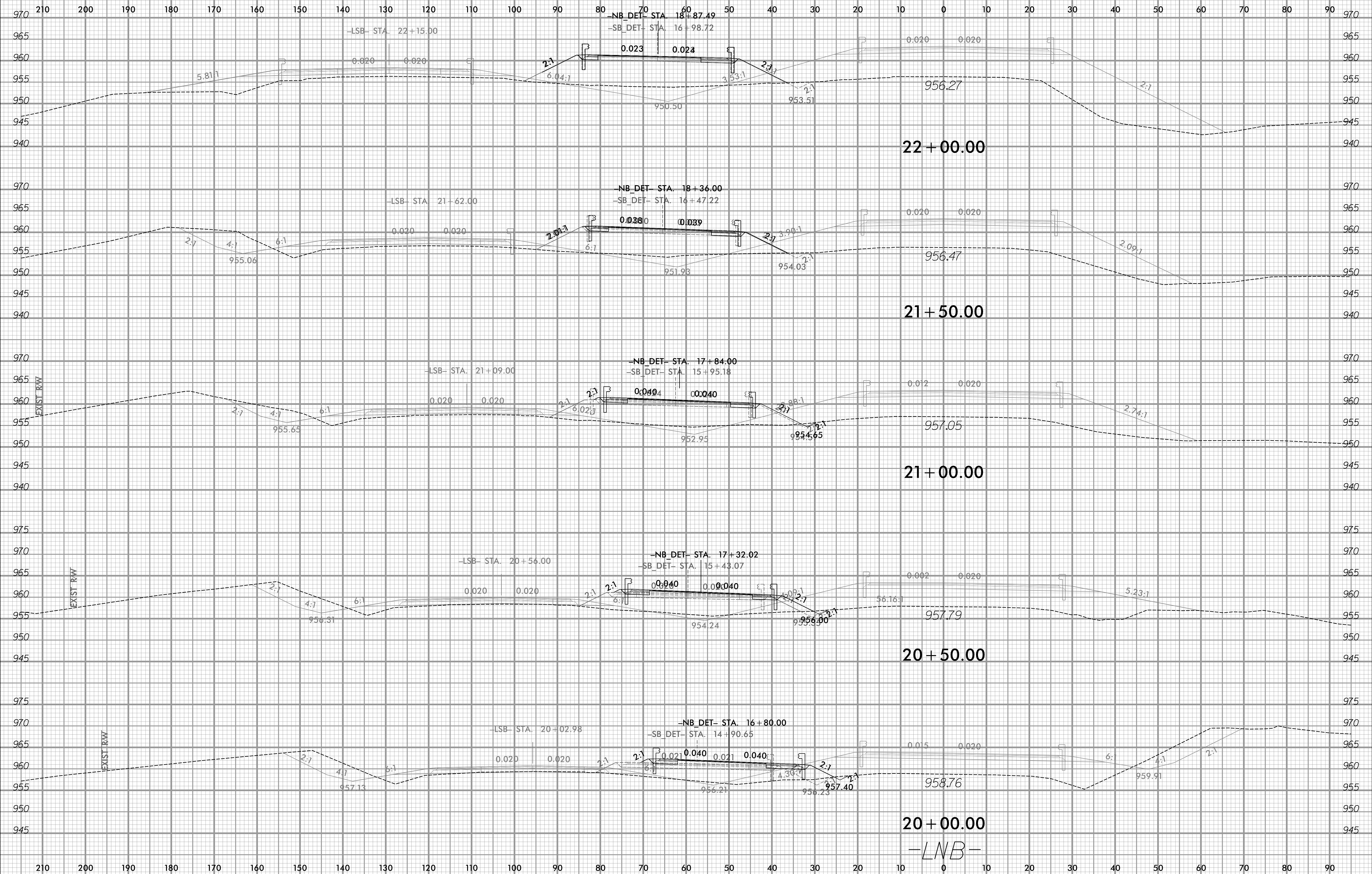


6/23/16

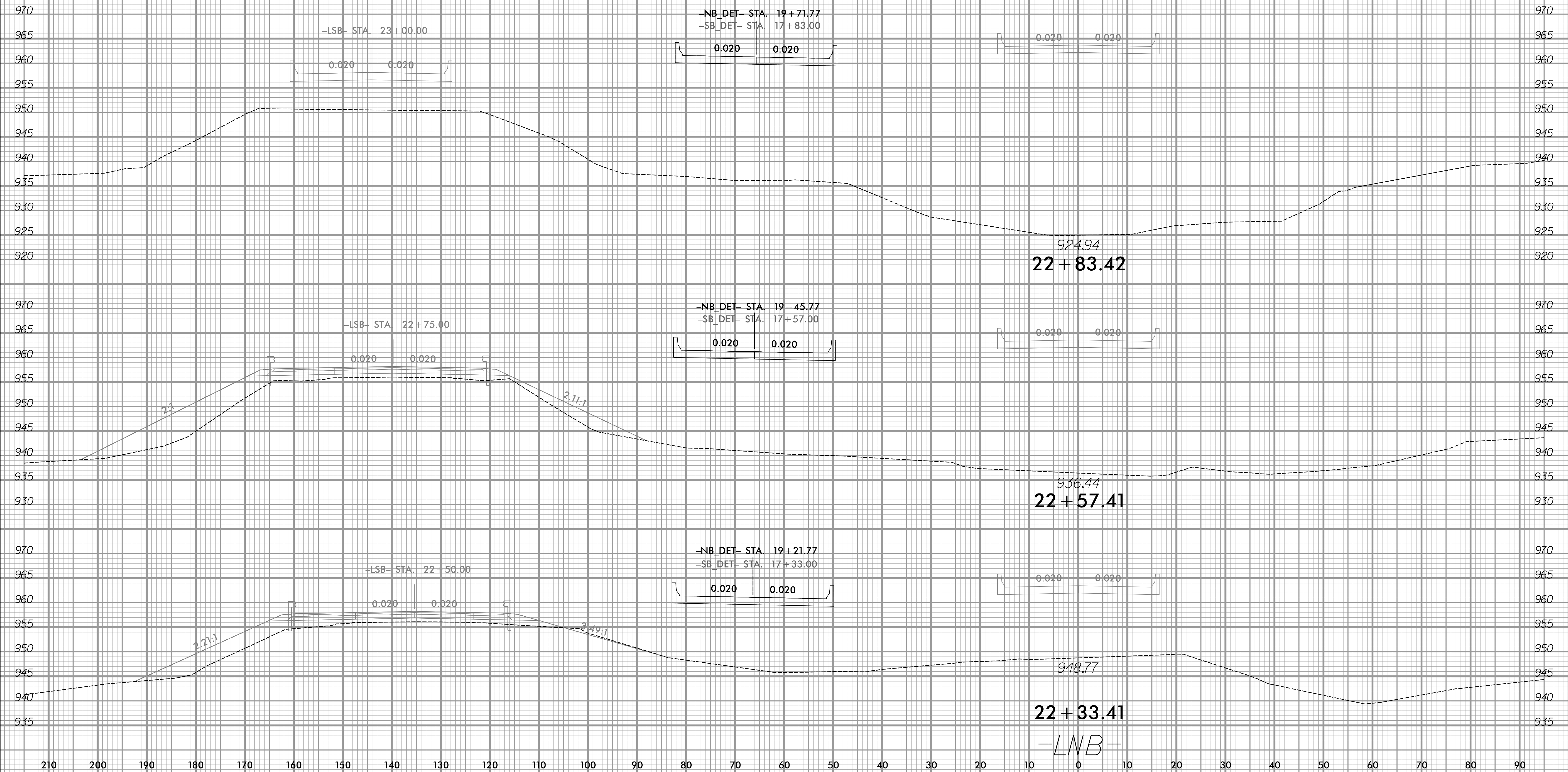


PROJ. REFERENCE NO.	SHEET NO.
B-5527	X-6B

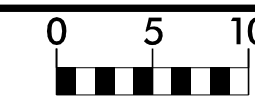


9/20/2023  
 X:\Projects\114-783\0050 - B-5527 CE Update\05-CAD\B5527\Roadway\XSC\B5527\_Rdy\_Xpl\_LNB.dgn  
 LNB

210 200 190 180 170 160 150 140 130 120 110 100 90 80 70 60 50 40 30 20 10 0 10 20 30 40 50 60 70 80 90

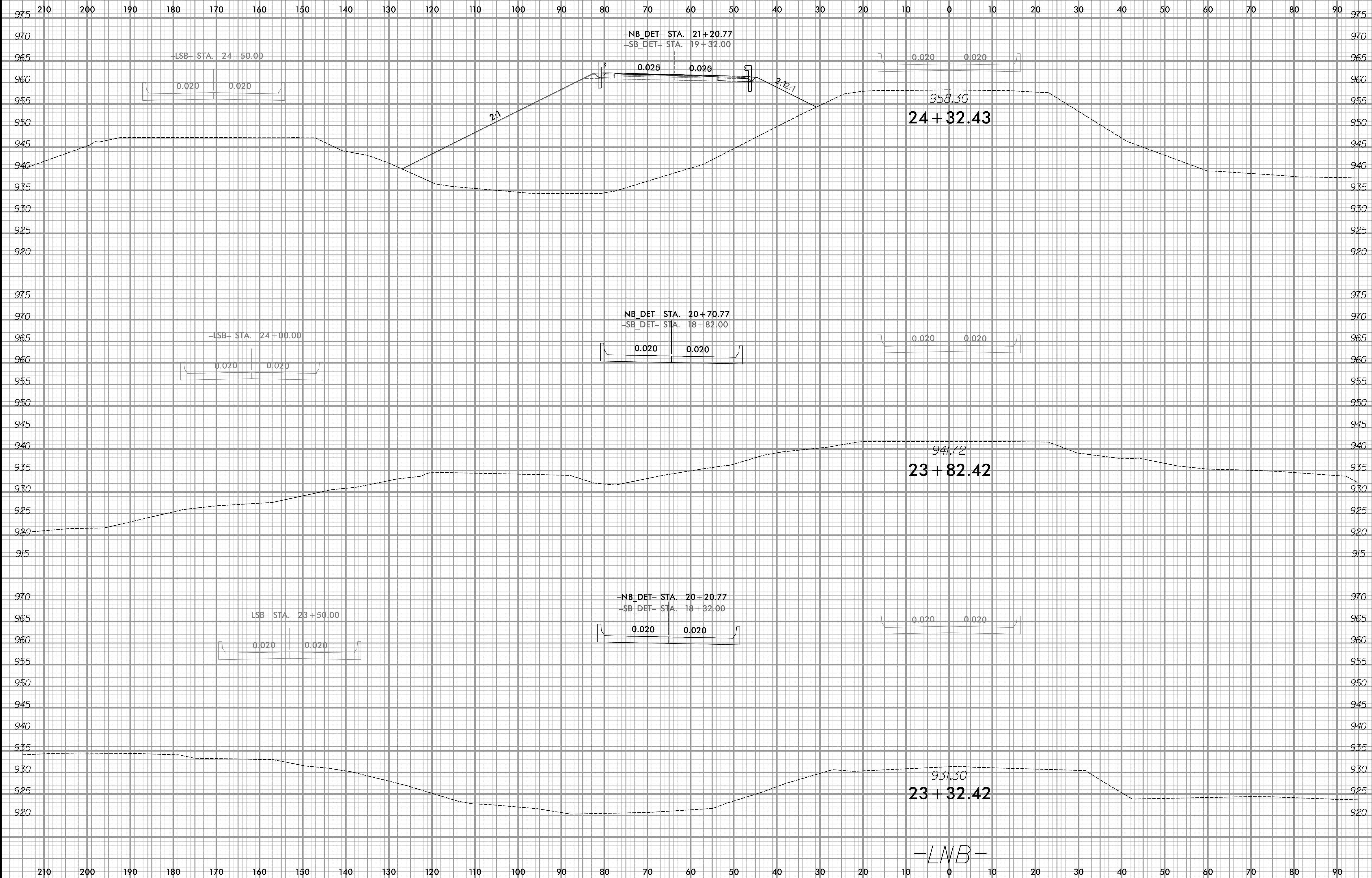


6/23/16



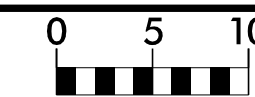
PROJ. REFERENCE NO.  
B-5527

SHEET NO.  
X-8B



9/20/2023  
X:\Projects\114-783\0050 - B-5527 CE Update\05-CAD\B5527\Roadway\XSC\B5527\_Rdy\_Xpl\_LNBendNB\_DET.dgn  
micougas

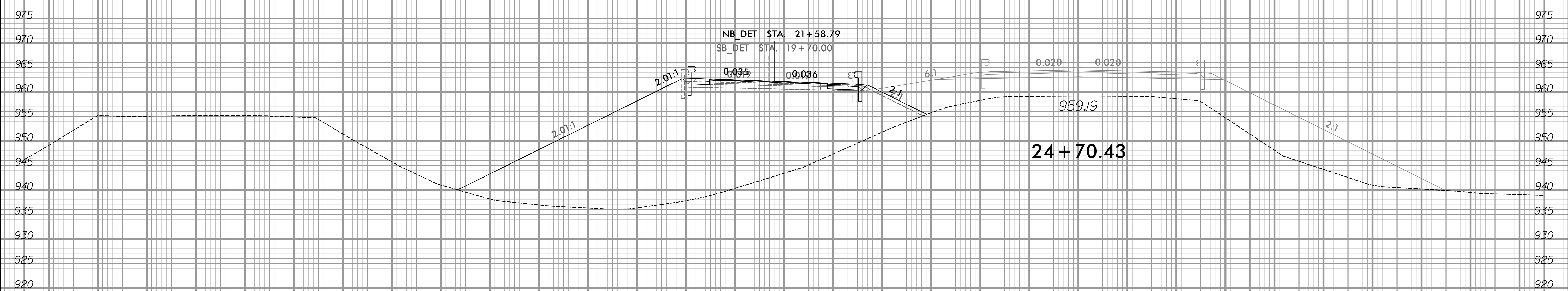
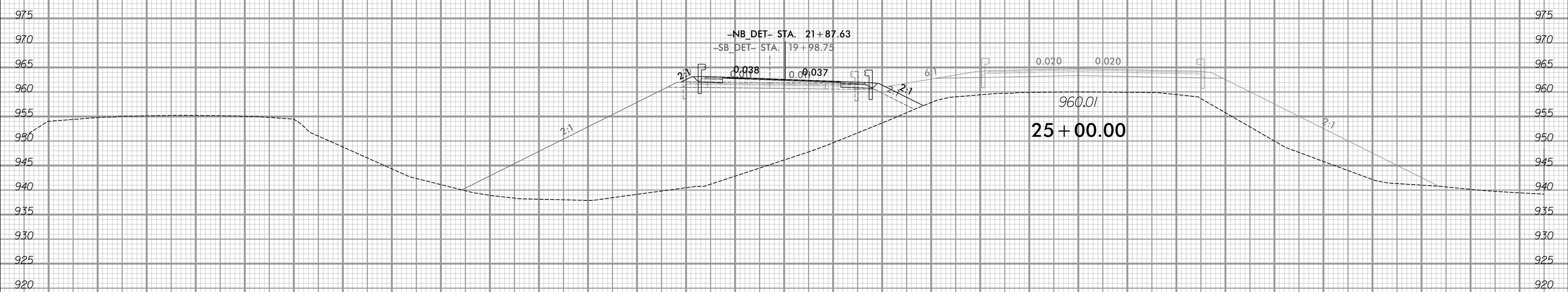
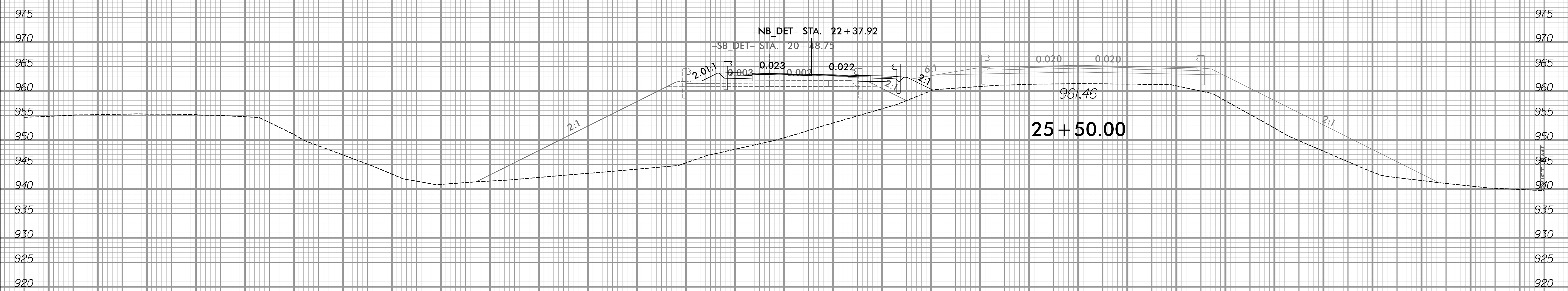
6/23/16



PROJ. REFERENCE NO.  
B-5527

SHEET NO.  
X-9B

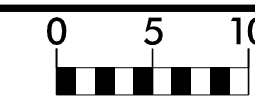
210 200 190 180 170 160 150 140 130 120 110 100 90 80 70 60 50 40 30 20 10 0 10 20 30 40 50 60 70 80 90



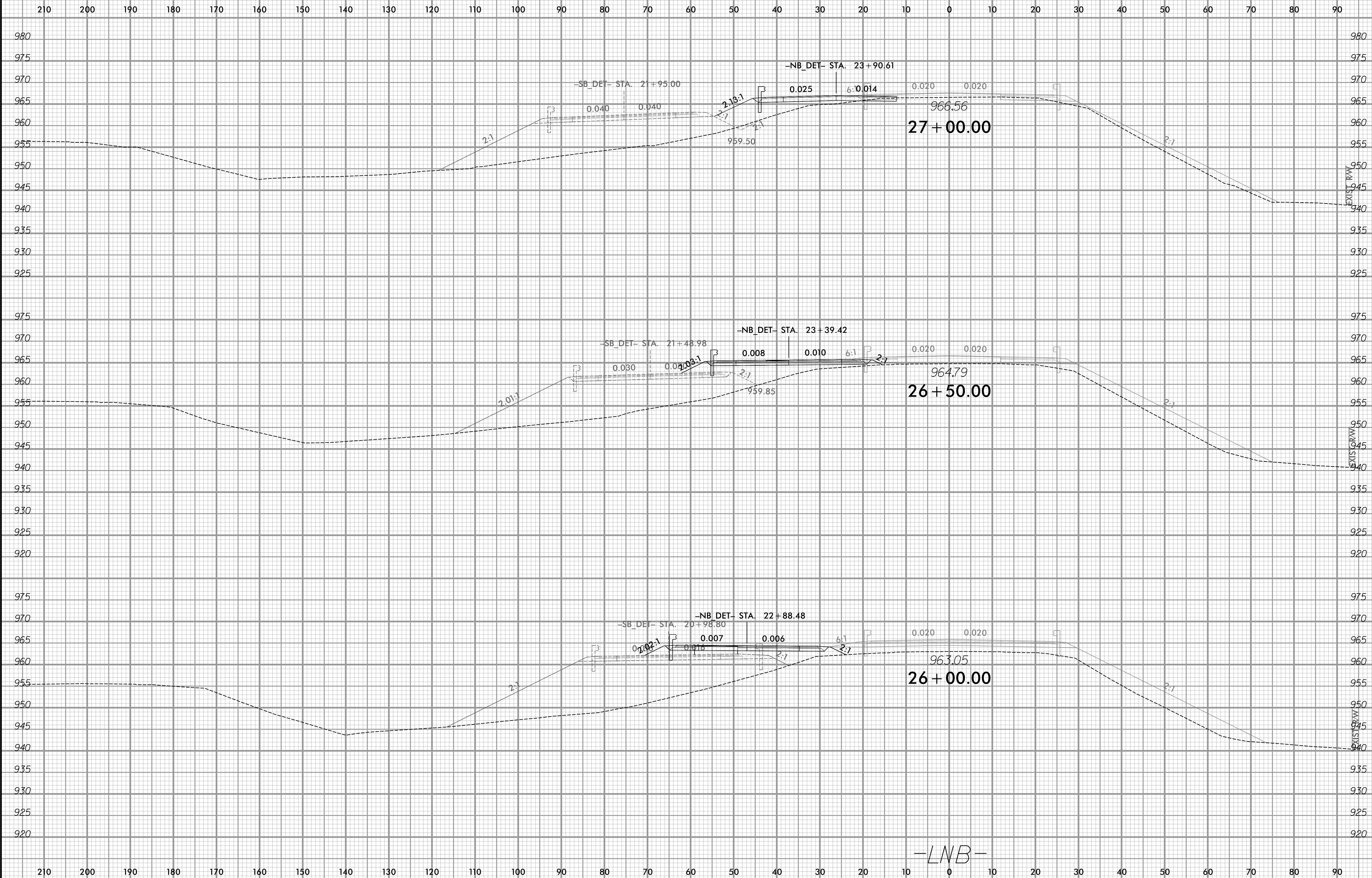
-LNB-

9/20/2023  
 X:\Projects\114-783\0050 - B-5527 CE Update\05-CAD\B5527\Roadway\XSC\B5527\_Rdy\_Xpl\_LNBendNB\_DET.dgn  
 micougas

6/23/16



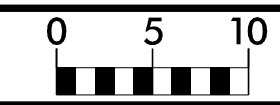
PROJ. REFERENCE NO.	SHEET NO.
B-5527	X-10B



-LNB-

9/20/2023 X:\Projects\114-783\0050 - B-5527 CE Update\05-CAD\B5527\Roadway\XSC\B5527\_Rdy\_Xpl\_LNBendNB\_DET.dgn

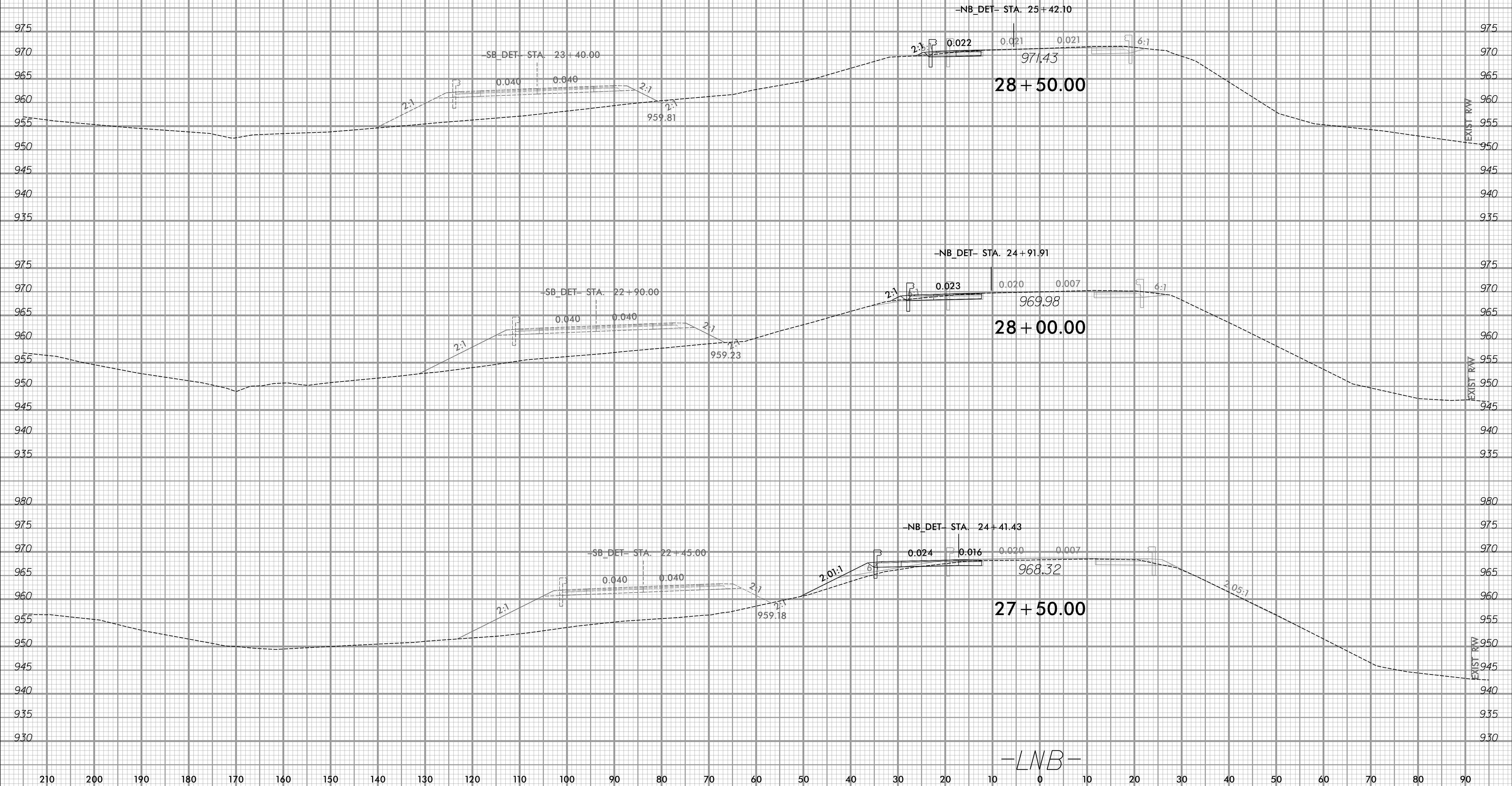
6/23/16



PROJ. REFERENCE NO.  
B-5527

SHEET NO.  
X-11B

210 200 190 180 170 160 150 140 130 120 110 100 90 80 70 60 50 40 30 20 10 0 10 20 30 40 50 60 70 80 90



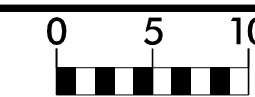
9/20/2023  
X:\Projects\114-783\0050 - B-5527 CE Update\05-CAD\B5527\Roadway\XSC\B5527\_Rdy\_Xpl\_LNB.dwg  
miculdas

210 200 190 180 170 160 150 140 130 120 110 100 90 80 70 60 50 40 30 20 10 0 10 20 30 40 50 60 70 80 90

-LNB-

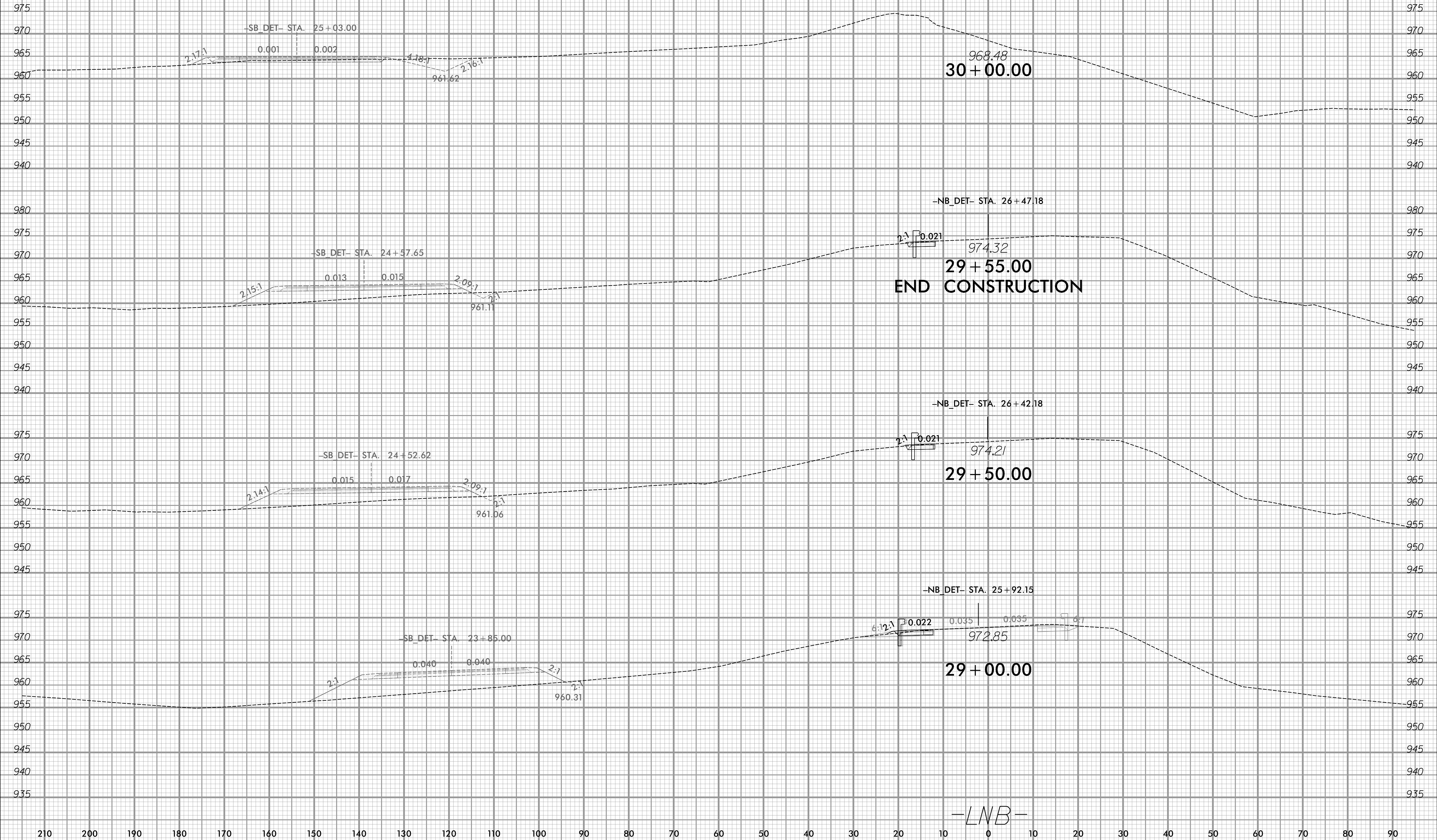


6/23/16



PROJ. REFERENCE NO.	SHEET NO.
B-5527	X-12B

210 200 190 180 170 160 150 140 130 120 110 100 90 80 70 60 50 40 30 20 10 0 10 20 30 40 50 60 70 80 90



968.48  
30 + 00.00

29 + 55.00  
END CONSTRUCTION

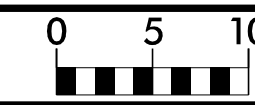
29 + 50.00

29 + 00.00

-LNB-

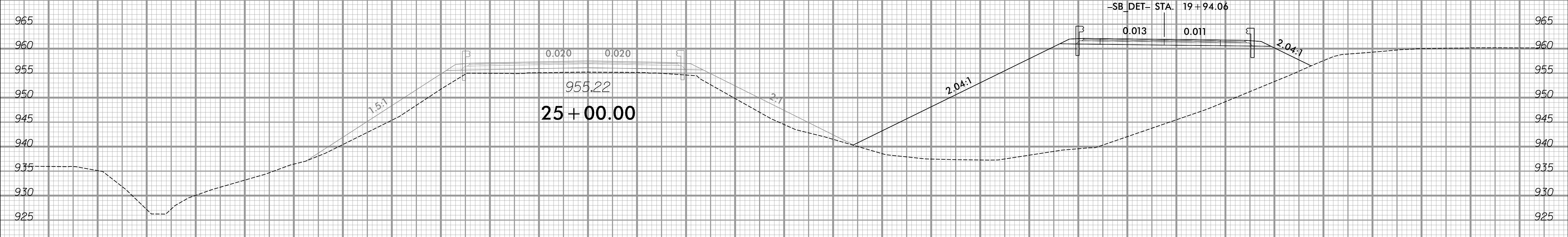
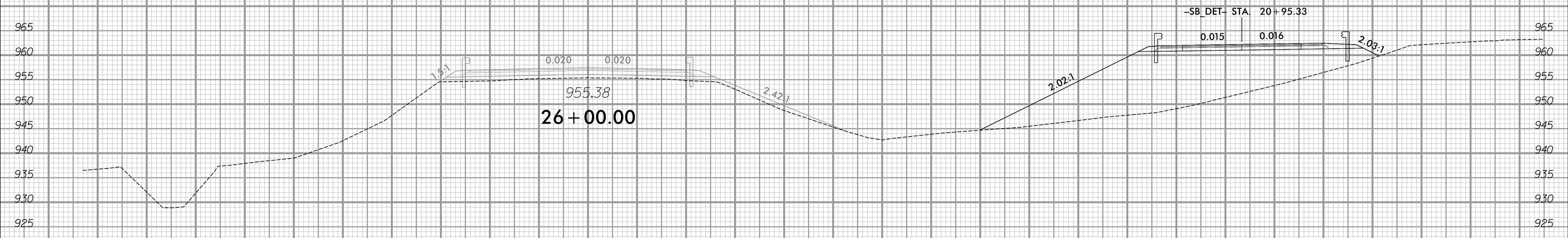
9/20/2023  
X:\Projects\114-783,0050 - B-5527 CE Update\05-CAD\B5527\Roadway\XSC\B5527\_Rdy\_Xpl\_LNBendNB\_DET.dgn  
micougas

6/23/16



PROJ. REFERENCE NO. B-5527	SHEET NO. X-13A
-------------------------------	--------------------

110 100 90 80 70 60 50 40 30 20 10 0 10 20 30 40 50 60 70 80 90 100 110 120 130 140 150 160 170 180 190

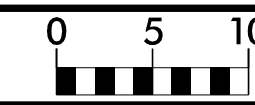


-LSB-

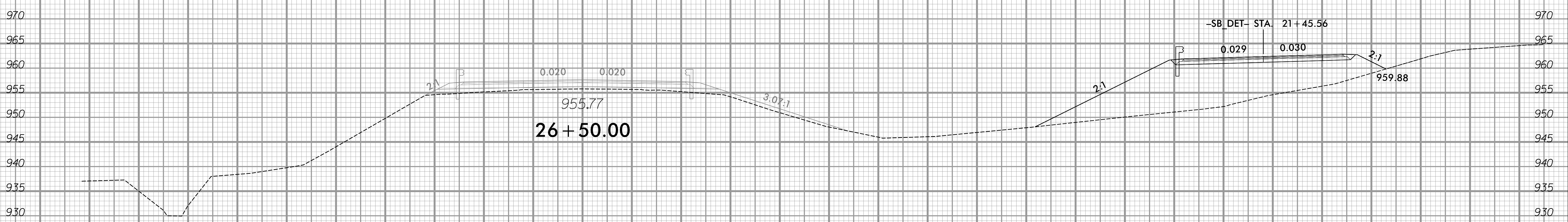
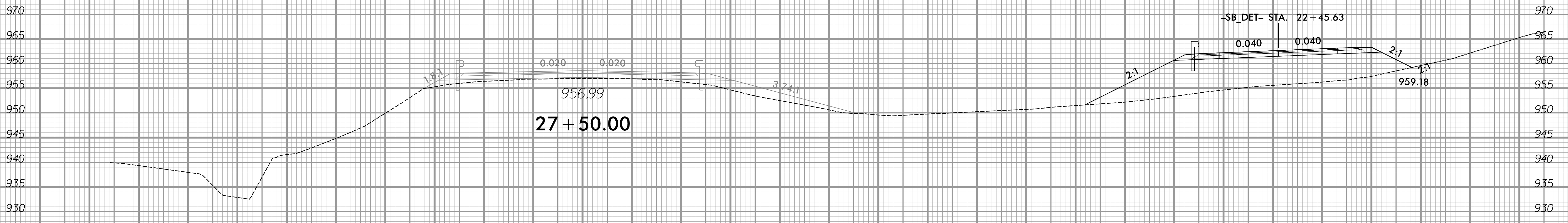
110 100 90 80 70 60 50 40 30 20 10 0 10 20 30 40 50 60 70 80 90 100 110 120 130 140 150 160 170 180 190

9/20/2023  
 X:\Projects\114-783\0050 - B-5527 CE Update\05-CAD\B5527\Roadway\XSC\B5527\_Rdy\_Xpl\_LSBandSB\_DET.dgn  
 microlog





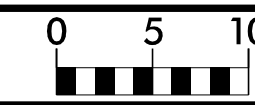
110 100 90 80 70 60 50 40 30 20 10 0 10 20 30 40 50 60 70 80 90 100 110 120 130 140 150 160 170 180 190



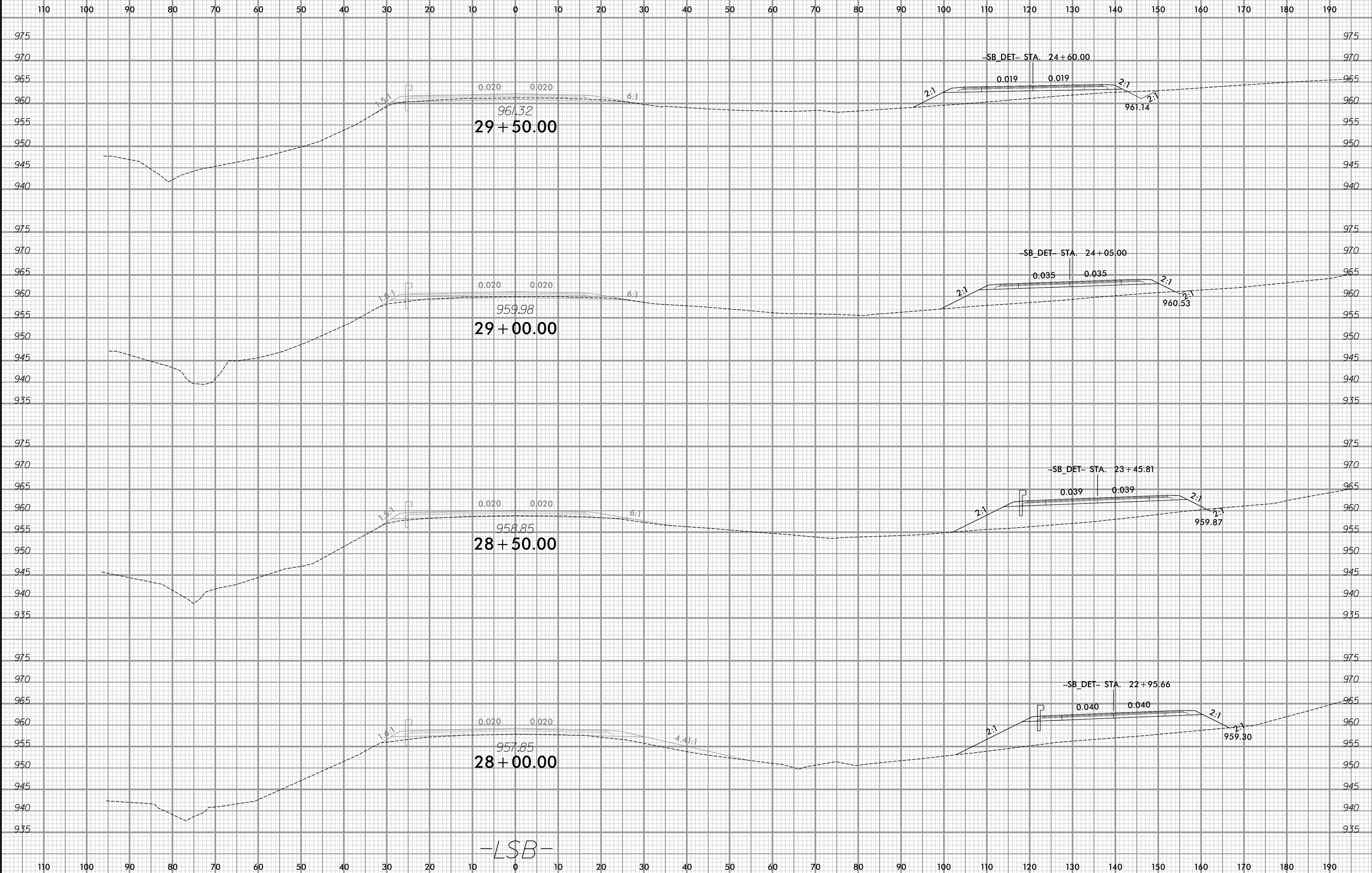
-LSB-

110 100 90 80 70 60 50 40 30 20 10 0 10 20 30 40 50 60 70 80 90 100 110 120 130 140 150 160 170 180 190

6/23/16



PROJ. REFERENCE NO.	SHEET NO.
B-5527	X-15A

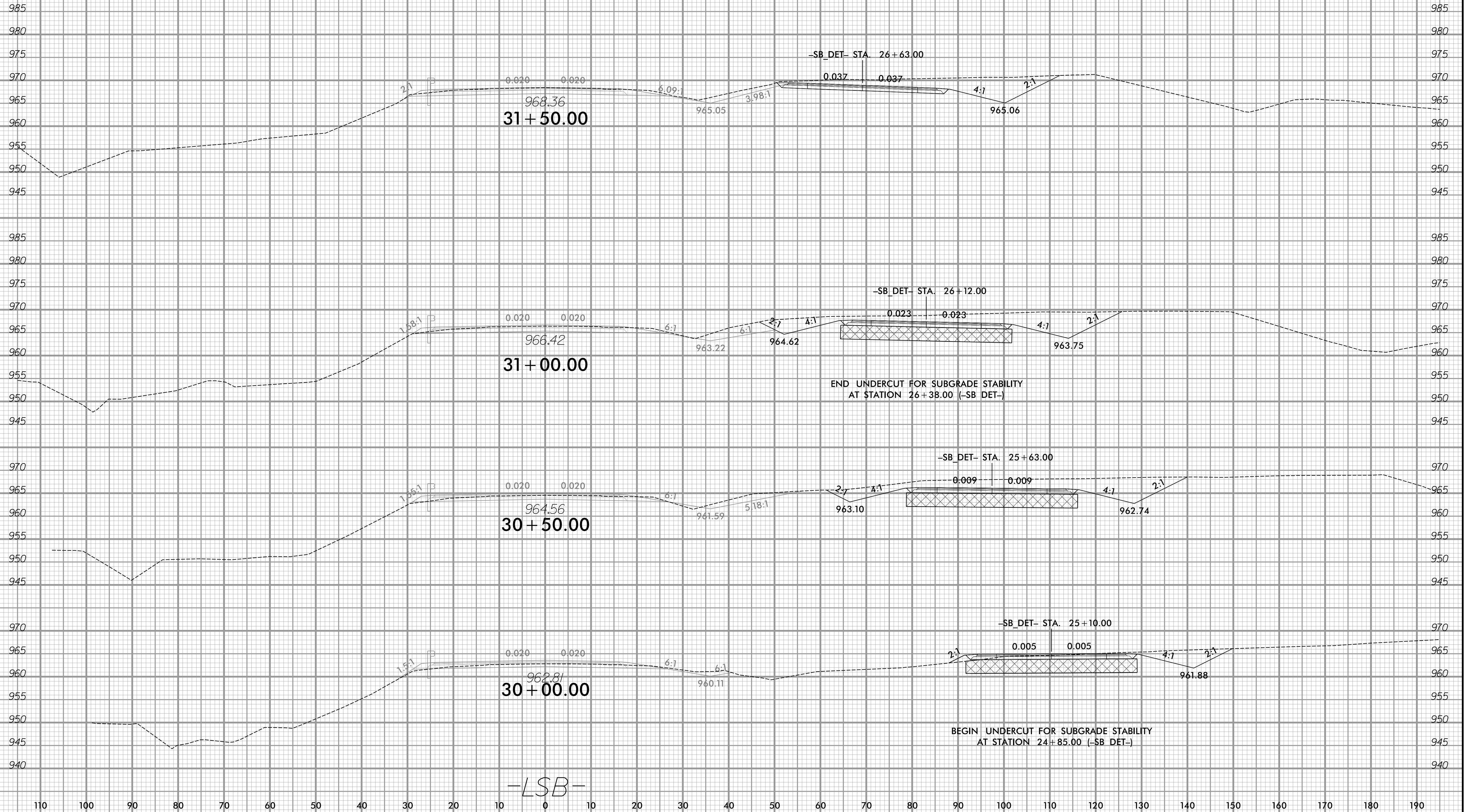


9/20/2023 X:\Projects\114-783\0050 - B-5527 CE Update\05-CAD\B5527\Roadway\XSC\B5527\_Rdy\_Xpl\_LSBandSB\_DET.dgn

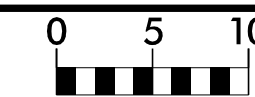
micoudtas

-LSB-

110 100 90 80 70 60 50 40 30 20 10 0 10 20 30 40 50 60 70 80 90 100 110 120 130 140 150 160 170 180 190

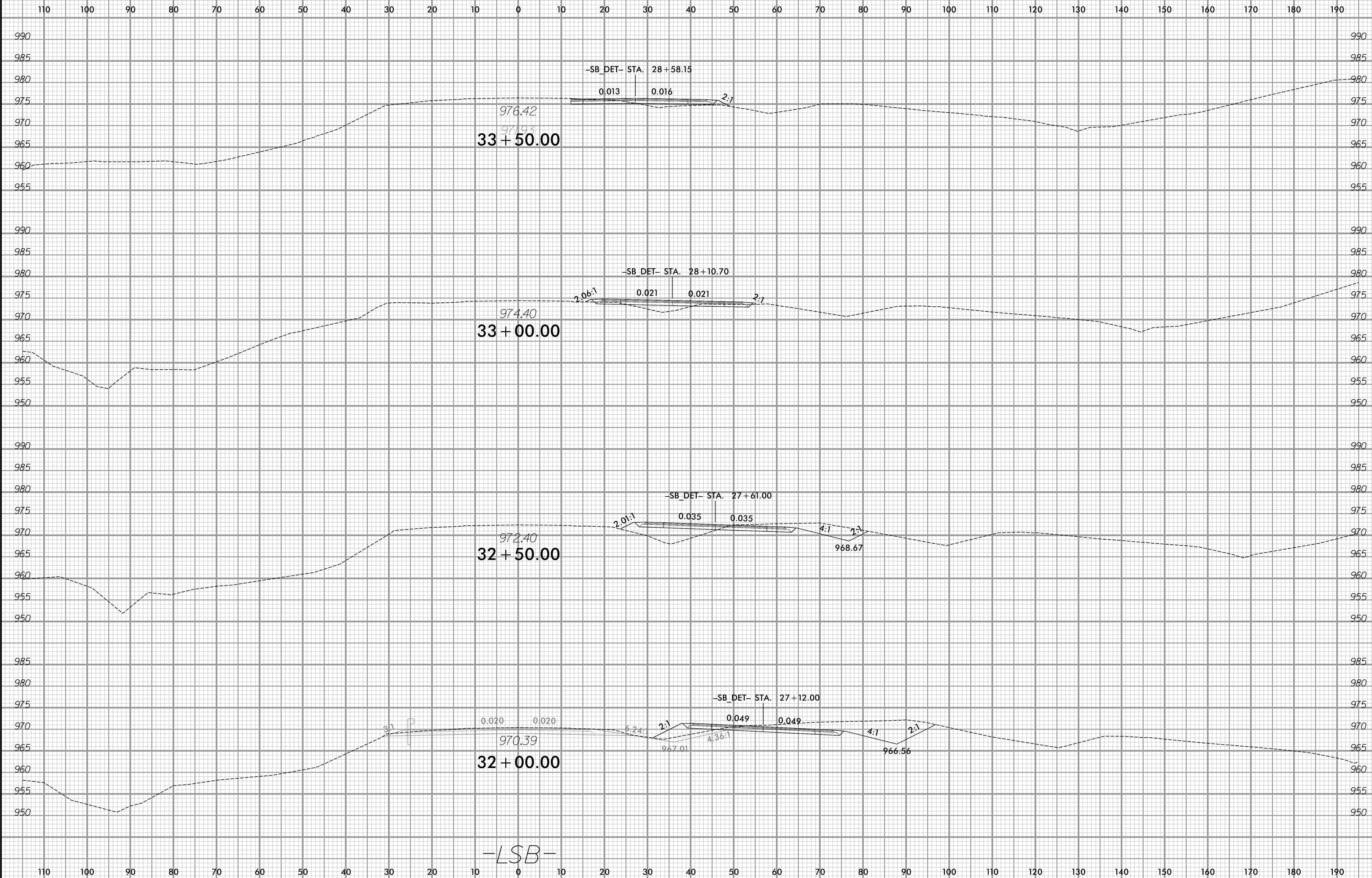


6/23/16



PROJ. REFERENCE NO.  
B-5527

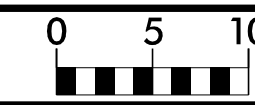
SHEET NO.  
X-17A



9/20/2023  
X:\Projects\114-783\0050 - B-5527 CE Update\05-CAD\B5527\Roadway\XSC\B5527\_Rdy\_Xpl\_LSBandSB\_DET.dgn

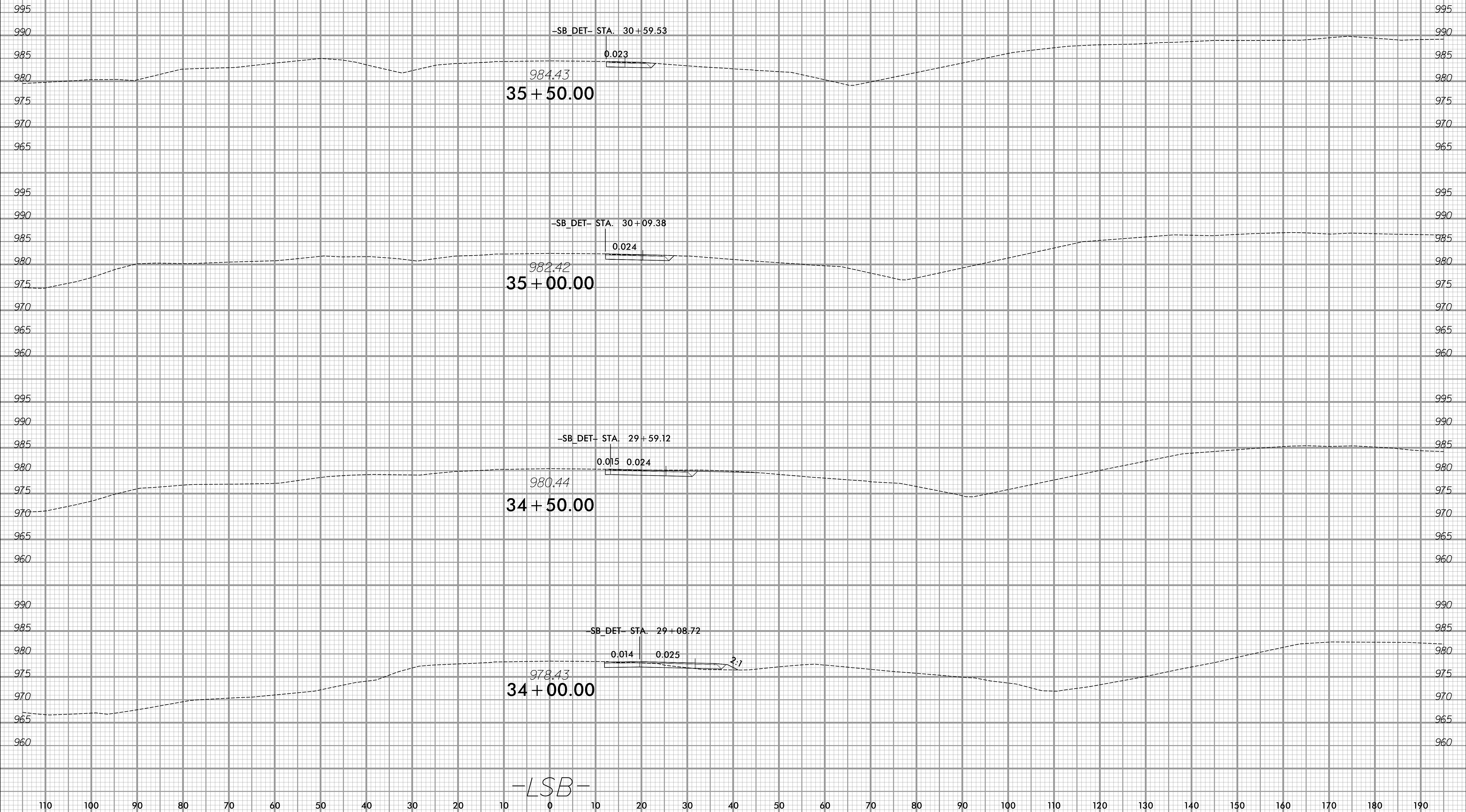
-LSB-

6/23/16



PROJ. REFERENCE NO.	SHEET NO.
B-5527	X-18A

110 100 90 80 70 60 50 40 30 20 10 0 10 20 30 40 50 60 70 80 90 100 110 120 130 140 150 160 170 180 190



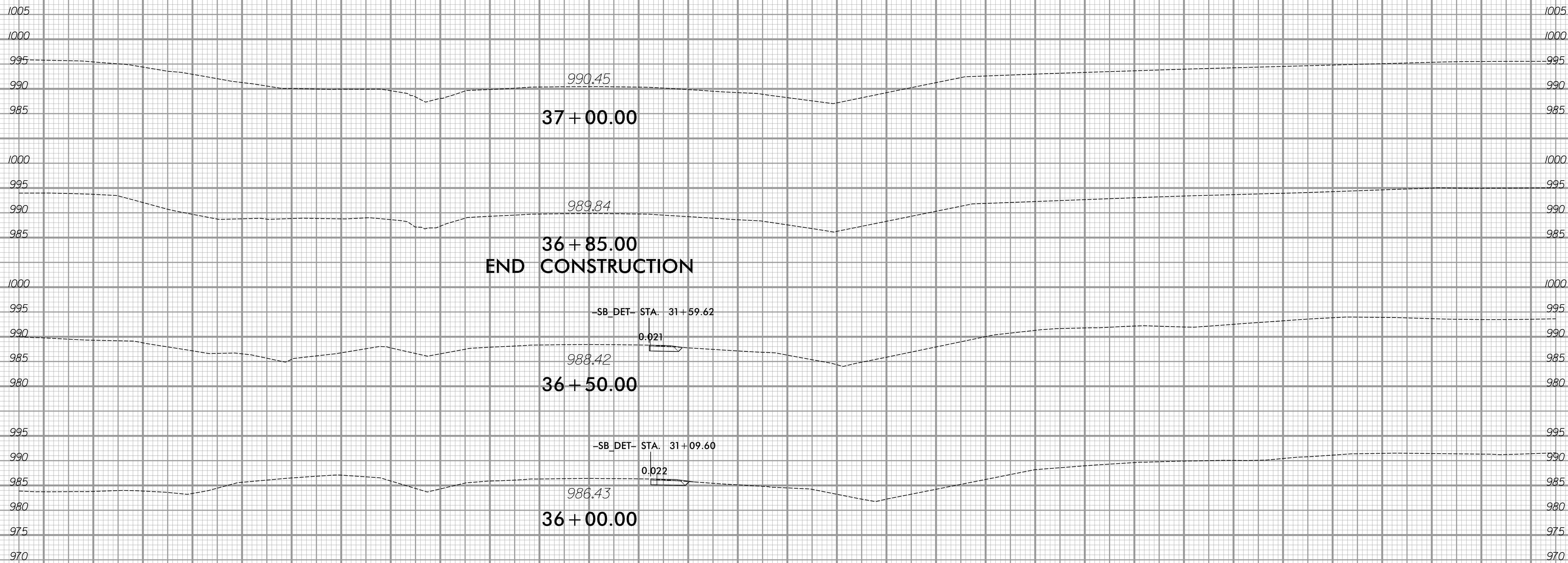
9/20/2023  
 X:\Projects\114-783\0050 - B-5527 CE Update\05-CAD\B5527-Roadway\XSC\B5527-Rdy\_Xpl\_LLSBendSB\_DET.dgn  
 mcdougals

6/23/16



PROJ. REFERENCE NO.	SHEET NO.
B-5527	X-19A

110 100 90 80 70 60 50 40 30 20 10 0 10 20 30 40 50 60 70 80 90 100 110 120 130 140 150 160 170 180 190



9/20/2023  
 X:\Projects\114-783\0050 - B-5527 CE Update\05-CAD\B5527\Roadway\XSC\B5527\_Rdy\_Xpl\_LSBandSB\_DET.dgn  
 mcdougla

110 100 90 80 70 60 50 40 30 20 10 0 10 20 30 40 50 60 70 80 90 100 110 120 130 140 150 160 170 180 190

-LSB-