

**STATE OF NORTH CAROLINA
DEPARTMENT OF TRANSPORTATION**

**SIGNING PLAN
SURRY COUNTY**

TIP NO. B-5527	SHEET NO. SIGN-1
APPROVED: _____	
DATE: _____	
SEAL	
2/6/2024	
DOCUMENT NOT CONSIDERED FINAL UNLESS ALL SIGNATURES COMPLETED	

ROADWAY STANDARD DRAWING

THE FOLLOWING ROADWAY STANDARDS AS APPEAR IN "ROADWAY STANDARD DRAWINGS" - PROJECT SERVICES UNIT - N.C. DEPARTMENT OF TRANSPORTATION - RALEIGH, N.C., DATED JANUARY 2024 ARE APPLICABLE TO THIS PROJECT AND BY REFERENCE HEREBY ARE CONSIDERED A PART OF THESE PLANS:

STD. NO.	TITLE
901.50	ARROWS AND SHIELDS
901.10	SIGNING - TYPE "A" SIGNS
901.70	SIGN STRINGERS & SUPPORT SPACING
901.80	SIGN MOUNTING DETAILS
902.10	FOUNDATIONS FOR GROUND MOUNTED SIGNS
903.10	GROUND MOUNTED SIGN SUPPORTS
904.10	SIGNING - ORIENTATION OF GROUND MOUNTED SIGNS
904.50	SIGNING - MOUNTING OF TYPE 'D', 'E', AND 'F' SIGNS ON 'U' CHANNEL POSTS

INDEX

SHEET NO.	DESCRIPTION
SIGN-1	SIGNING PLAN TITLE AND SCHEDULE SHEET
SIGN-2 THRU 3	TYPE "A" SIGNS
SIGN-4	TYPE "E" AND "F" SIGNS
SIGN-5 THRU 6	EXISTING AND PROPOSED SIGNS

SIGNING SUMMARY OF QUANTITIES

ITEM NO.	ITEM DESCRIPTION	QUANTITY	UNIT
4054000000	902 PLAIN CONCRETE SIGN FOUNDATIONS	1	CY
4060000000	903 SUPPORTS, BREAKAWAY STEEL BEAM	225	LB
4072000000	903 SUPPORTS, 3 LB STEEL U-CHANNEL	163	LF
4155000000	907 DISPOSAL OF SIGN SYSTEM, U-CHANNEL	2	EA
4158000000	907 DISPOSAL OF SIGN SYSTEM, WOOD	3	EA
4096000000	904 SIGN ERECTION TYPE D	2	EA
4102000000	904 SIGN ERECTION TYPE E	3	EA
4108000000	904 SIGN ERECTION TYPE F	1	EA
4110000000	904 SIGN ERECTION TYPE A (GROUND MOUNTED)	1	EA

GENERAL NOTES

THE FOLLOWING GENERAL NOTES APPLY AT ALL TIMES FOR THE DURATION OF THE CONSTRUCTION PROJECT, EXCEPT WHEN OTHERWISE NOTED IN THE PLAN, OR DIRECTED BY THE ENGINEER.

- A) SIGNS FURNISHED BY STATE
- B) CONFIRM IN WRITING AT LEAST 4 MONTHS IN ADVANCE, THE ACTUAL DATE THE DEPARTMENT FURNISHED SIGNS WILL BE REQUIRED.
- D) SIGNING PLANS DO NOT INCLUDE TEMPORARY CONSTRUCTION SIGNING OR PAVEMENT MARKINGS. SEE TRAFFIC CONTROL PLANS.
- E) WHEN NOT STATIONED OR DIMENSIONED ON PLANS, ALL 'E' SIGNS SHALL BE FIELD LOCATED BY THE ENGINEER
- F) ALL EXISTING SIGNS ON "U" CHANNEL POST WITHIN THE PROJECT LIMITS SHALL BE HANDLED WITH CARE AND RELOCATED TO AVOID CONFLICT WITH PROPOSED IMPROVEMENTS.
- G) WHEN EXISTING SIGNS ARE REMOVED AND INSTALLED ON NEW SUPPORTS, THE RE-ERECTION SHALL IMMEDIATELY FOLLOW THE REMOVAL.
- H) THE BACKGROUND FOR TYPE 'E' SIGNS SHALL BE TYPE C REFLECTIVE SHEETING.
- I) CONTRACTOR TO RELOCATE EXISTING SIGNS WITH CARE. DAMAGED SIGNS TO BE REPLACED.
- J) ALL EXITING SIGN LOCATIONS ARE APPROXIMATE.

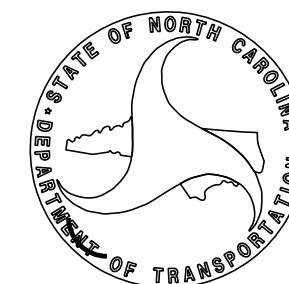
PLAN PREPARED BY: AMT

JASON T. GADDY, PE PROJECT MANAGER
JP HAINLINE, EI PROJECT DESIGN ENGINEER



PLAN REVIEWED BY: NCDOT

DANIEL R. ADAMS, PE DIVISION TRAFFIC ENGINEER
IVAN H. DISHMAN, PE DIVISION CONSTRUCTION ENGINEER



TIP NO. B-5527	SHEET NO. SIGN-2
APPROVED: _____	
DATE: _____	
SEAL	
Digitally signed by Jason T. Gaddy DN: cn=Jason T. Gaddy, o=AMT, ou=AMT, email=jgaddy@amt-engineering.com, c=US	
DOCUMENT NOT CONSIDERED FINAL UNLESS ALL SIGNATURES COMPLETED	

SIGN					ROADWAY STATION	NUMBER OF SUPPORTS	BEAM SECTION	SUPPORT TYPE BA or S	OMNI COUPLER	ATTACHMENT METHOD	MOUNTING METHOD	HORIZONTAL CLEARANCE* (ft.)	SUPPORT SPACING	LENGTH (ft)			LEFT SUPPORT (ft)			CENTER SUPPORT (ft)			RIGHT SUPPORT (ft)			SUPPORT WEIGHTS		FOOTINGS				FIELD VERIFIED SEE NOTE 2 (mm/dd/yy)
NUMBER	TYPE	SIZE (in.)												SNS HT	MTG HT	EMBED-MENT	S	L	LENGTH	S	L	TOTAL LENGTH	S	L	LENGTH	B/A (lbs.)	SIMPLE (lbs.)	DIAMETER (ft.)	DEPTH (ft.)	REINFORCED (c.y.)	PLAIN (c.y.)	
		w	x	h																												
201	A	90	x	60	33+75+/-	2	S3x5.7	BA	N/A	N/A	N/A	Δ	4.40	5.00	7.00	2.5	2.12	14.12	16.62	0.00	0.00	0.00	1.90	13.90	16.40	224.21	0	1.0	3	0.00	0.17	

NOTES

- DIMENSION "S" REPRESENTS AN INCREASE (+), OR A DECREASE (-) IN POLE LENGTH, RELATIVE TO THE ELEVATION OF THE EDGE OF TRAVEL LANE.
- FIELD VERIFICATIONS SHALL BE REQUIRED FOR ALL SUPPORTS, SEE (*) ARTICLE 903-3. FABRICATORS SHALL BE AISC CERTIFIED IN CATEGORY 1, SEE (*) ARTICLE 1072-1. (*) = N.C.D.O.T. STANDARD SPECIFICATIONS FOR ROADS AND STRUCTURES
- PLAN LOCATIONS FOR EXISTING UTILITIES ARE BASED ON THE BEST AVAILABLE INFORMATION AND, THEREFORE MAY NOT BE PRECISELY ACCURATE. THEREFORE, IT IS INCUMBENT UPON THE CONTRACTOR TO DETERMINE THE EXACT LOCATION OF UTILITIES BEFORE BEGINNING WORK IN A LOCATION.
- IF GROUNDWATER IS ENCOUNTERED AT A DEPTH SHALLOWER THAN 7 FEET, THE SIGN FOUNDATION MUST BE REDESIGNED UPON ACTUAL FIELD CONDITIONS THE FOUNDATION DESIGN DOES NOT APPLY TO VERY SOFT OR LOOSE SOIL, MUCK WEATHERED ROCK, OR HARD ROCK.

TYPE "A" GROUND MOUNTED SIGNS

2/6/2024 11:14:783.0050 - B-5527 CE Update\05-CAD\B5527\Traffic\Signing\CADD\B5527_TMP_SIGN02.dgn
 X:\Projects\114-783\0050 - B-5527 CE Update\05-CAD\B5527\Traffic\Signing\CADD\B5527_TMP_SIGN02.dgn
 oocarpenter

TIP NO. B-5527	SHEET NO. SIGN-3
APPROVED: _____	
DATE: _____	
SEAL	
DocuSigned by: BAED064400BA98	
DOCUMENT NOT CONSIDERED FINAL UNLESS ALL SIGNATURES COMPLETED	
A. MORTON THOMAS AND ASSOCIATES, INC. 900 RIDGEFIELD DRIVE, SUITE 300 W. RALEIGH, NC 27609 (919) 855-9989 • NC LICENSE NO. F-1049 WWW.AMTENGINEERING.COM	

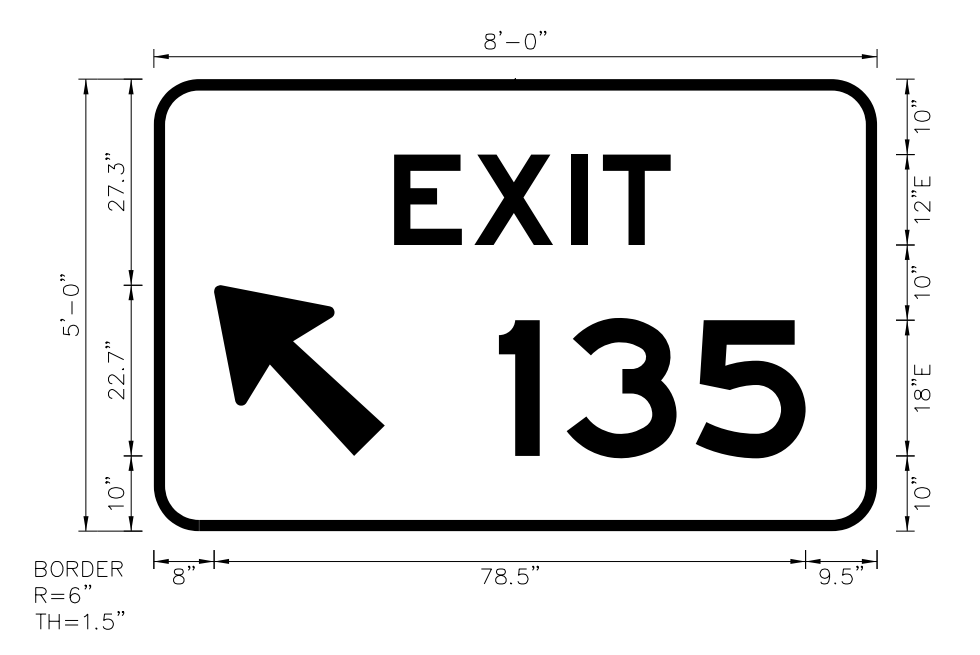
SIGN NUMBER: 201
TYPE: A
QUANTITY: 1
SIGN WIDTH: 8'-0"
HEIGHT: 5'-0"
TOTAL AREA: 40.0 Sq.Ft.
BORDER TYPE: FLUSH
RECESS: 0"
WIDTH: 1.5"
RADII: 6"
NO. Z BARS: 2
LENGTH: 88.0

BACKG COLOR: Green
COPY COLOR: White

SYMBOL	X	Y	WID	HT
Exit Arrow (Type A) 2012	8	10	18	28.8

MAT'L: 0.125" (3.2 mm) ALUMINUM

DESIGN BY: RDM
PROJECT ID: B-5527
CHECKED BY: JG
LOCATION: SURRY
Jan 09, 2024
DIV: 11



- USE NOTES:**
- Legend and border(except those that are colored black) shall be direct applied Grade C sheeting.
 - Background shall be Grade C reflective sheeting.

Spacing Factor is 1 unless specified otherwise

LETTER POSITIONS

Letter spacings are to start of next letter

Letter	E	X	I	T	Series/Size Text Length		
E	31.9	10.7	12.8	4.2	9	27.4	E 2000
X	1	3	5		E 2000		36.7
I	45.8	9	17.1	14.6	9.5		E 2000
T							40.7

B5527_TMP_SIGN_SignDsn NORTH CAROLINA D.O.T. SIGN DETAIL

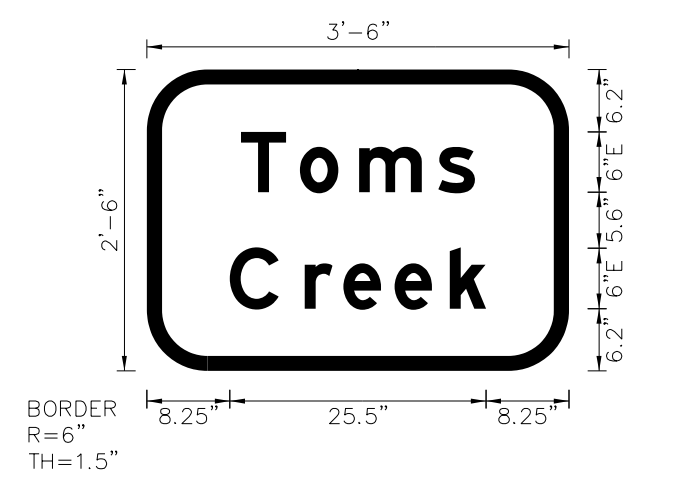
SIGN NUMBER: 301, 302
TYPE: D
QUANTITY: 2
SIGN WIDTH: 3'-6"
HEIGHT: 2'-6"
TOTAL AREA: 8.8 Sq.Ft.
BORDER TYPE: FLUSH
RECESS: 0"
WIDTH: 1.5"
RADII: 6"
NO. Z BARS: _____
LENGTH: _____

BACKG COLOR: Green
COPY COLOR: White

SYMBOL	X	Y	WID	HT

MAT'L: 0.125" (3.2 mm) ALUMINUM

DESIGN BY: RDM
PROJECT ID: B-5527
CHECKED BY: JG
LOCATION: SURRY
Jan 09, 2024
DIV: 11



- USE NOTES:**
- Legend and border(except those that are colored black) shall be direct applied Grade A, B, C sheeting.
 - Background shall be Grade A, B, or C reflective sheeting.

Spacing Factor is 1 unless specified otherwise

LETTER POSITIONS

Letter spacings are to start of next letter

Letter	T	o	m	s	C	r	e	e	k	Series/Size Text Length
T	9.4	5.9	5.9	7.9	3.7	9.4				E 2000
o										E 2000
m										E 2000
s										E 2000
C	8.3	7.5	3.9	5.1	5.5	3.6	8.3			25.5

B5527_TMP_SIGN_SignDsn NORTH CAROLINA D.O.T. SIGN DETAIL

2/6/2024 2:46:14 PM X:\Projects\114-783\0050 - B-5527 CE Update\05-CAD\B5527\Traffic\Signing\CADD\B5527_TMP_SIGN03.dgn acarpenter

TYPE A SIGN

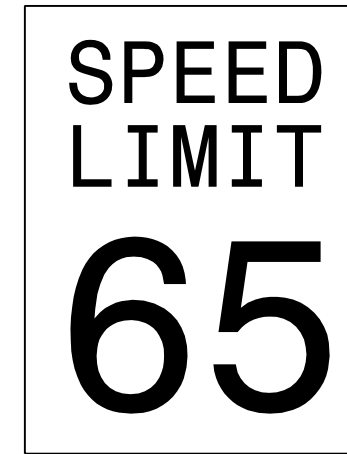
401 QUANTITY REQ'D 2



48" X 48"
W8-13

TWO "U" POST PER SIGN

402 QUANTITY REQ'D 1



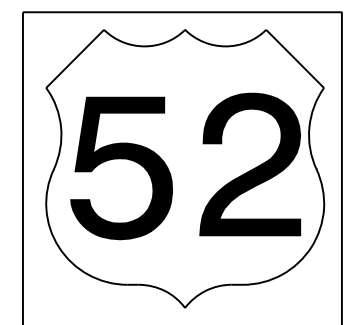
48" X 60"
R2-1

TWO "U" POSTS PER SIGN

501 QUANTITY REQ'D 1



30" X 15"
M3-3



36" X 36"
M1-4

ONE "U" POST PER SIGN

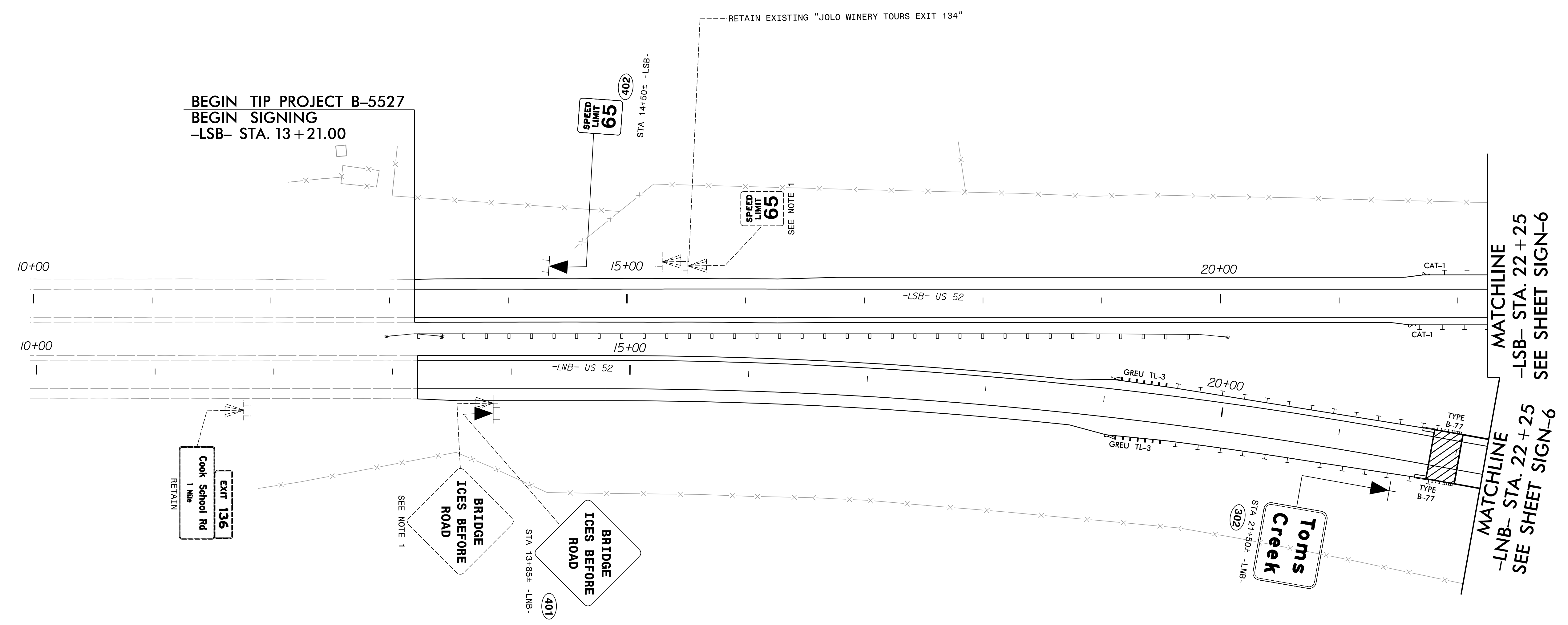
TIP NO. B-5527	SHEET NO. SIGN-4
APPROVED: _____	
DATE: _____	
SEAL	
2/6/2024	
<p>DOCUMENT NOT CONSIDERED FINAL UNLESS ALL SIGNATURES COMPLETED</p>	
<small>A. MORTON THOMAS AND ASSOCIATES, INC. 900 RIDGEFIELD DRIVE, SUITE 303 • RALEIGH, NC 27609 (919) 855-9985 • NC LICENSE NO. F-1049 WWW.AMTENGINEERING.COM</small>	

2/6/2024 2:14:11 PM X:\Projects\114-783\0050 - B-5527 CE Update\05-CAD\B5527\Traffic\Signing\CADD\B5527_TMP_SIGN04.dgn acarpenter

TYPE "E" AND "F" SIGNS



TIP NO. B-5527	SHEET NO. SIGN-5
APPROVED: _____	
DATE: _____	
SEAL	
2/6/2024	
DocuSigned by: <i>Jason T. Gaddy</i> BAE3D64020BA466	
DOCUMENT NOT CONSIDERED FINAL UNLESS ALL SIGNATURES COMPLETED	



**BEGIN TIP PROJECT B-5527
BEGIN SIGNING
-LSB- STA. 13+21.00**

PROJECT NOTES

- 1 DISPOSAL OF SIGN SYSTEM, U-CHANNEL
- 2 DISPOSAL OF SIGN SYSTEM, WOOD

EXISTING AND PROPOSED SIGNS

2/6/2024 X:\Projects\114-783,0050 - B-5527 CE Update\05-CAD\B5527-Traffic\Signing\CADD\B5527-TMP_SIGN05.dgn acarpenter

APPROVED: _____
 DATE: _____

SEAL

2/6/2024

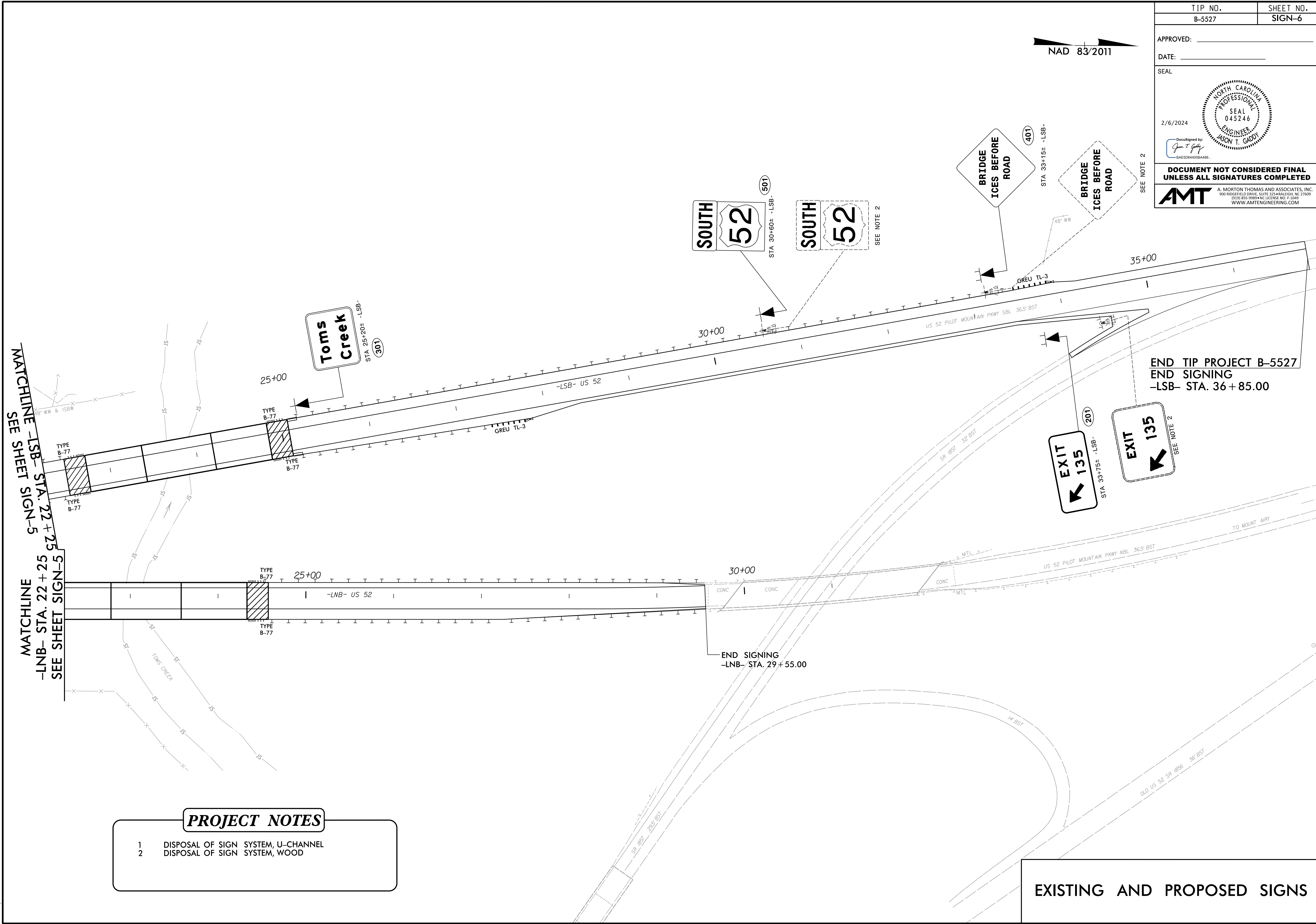
DocuSigned by:
Jason T. Gaddy
 BAES084408A488

PROFESSIONAL SEAL
 045246
 ENGINEER
 JASON T. GADDY

**DOCUMENT NOT CONSIDERED FINAL
 UNLESS ALL SIGNATURES COMPLETED**

AMT A. MORTON THOMAS AND ASSOCIATES, INC.
 900 RIDGEFIELD DRIVE, SUITE 320 RALEIGH, NC 27609
 (919) 855-9989 • NC LICENSE NO. F-1049
 WWW.AMTEngineering.COM

NAD 83/2011



MATCHLINE -LSB- STA. 22 + 25
 SEE SHEET SIGN-5
 MATCHLINE -LNB- STA. 22 + 25
 SEE SHEET SIGN-5

END TIP PROJECT B-5527
 END SIGNING
 -LSB- STA. 36 + 85.00

END SIGNING
 -LNB- STA. 29 + 55.00

- PROJECT NOTES**
- DISPOSAL OF SIGN SYSTEM, U-CHANNEL
 - DISPOSAL OF SIGN SYSTEM, WOOD

EXISTING AND PROPOSED SIGNS

2/6/2024
 X:\Projects\114-783.0050 - B-5527 CE Update\05-CAD\B5527-Traffic\Signing\CADD\B5527-TMP_SIGN06.dgn
 acarpenter