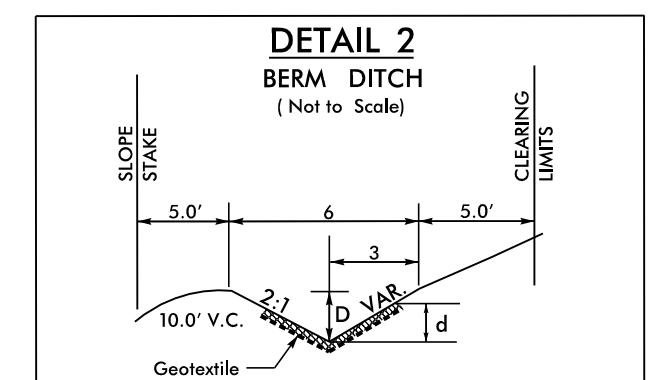
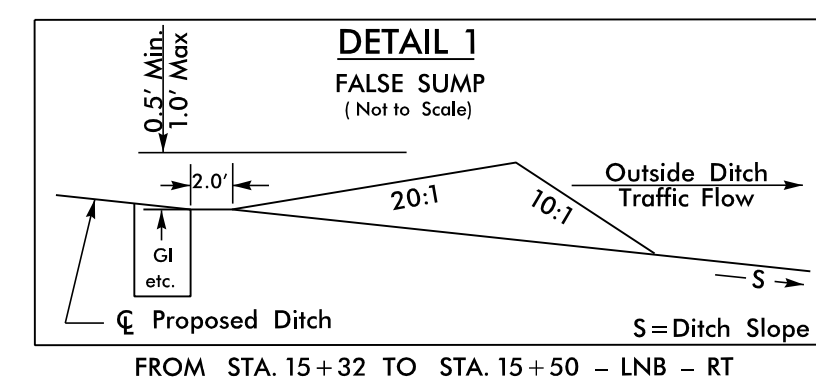
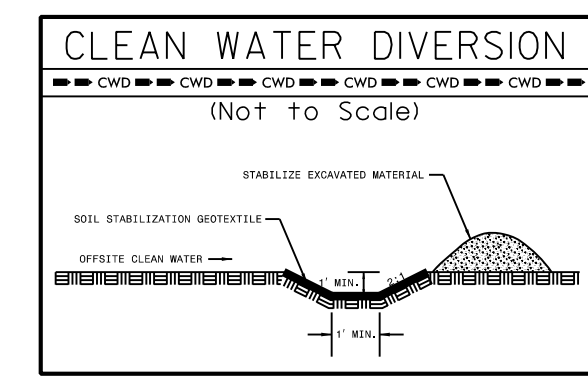


FINAL PHASE

-LNB-
 PI Sta 18+14.60
 $\Delta = 10^{\circ} 05' 07.9''$ (RT)
 $D = 1^{\circ} 30' 28.0''$
 $L = 668.90'$
 $T = 335.31'$
 $R = 3,800.00'$
 $e = 5.0\%$
 $Ro = 180'$

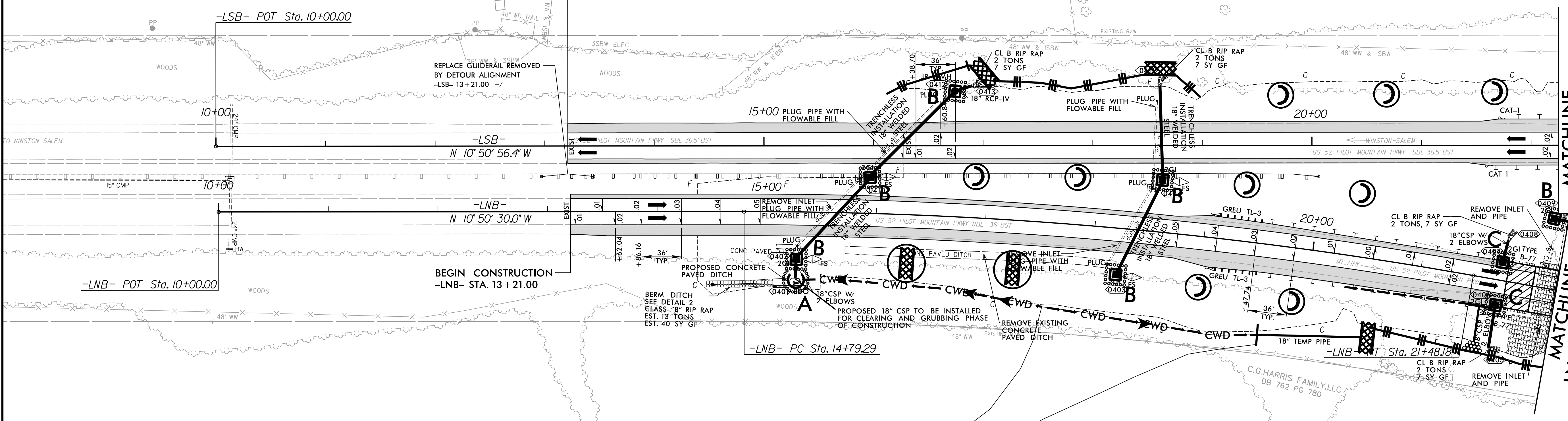


FROM STA. 15+32 TO STA. 15+50 - LNB - RT
 FROM STA. 18+28 TO STA. 18+44 - LNB - RT
 FROM STA. 16+00 TO STA. 16+18 - LNB - LT
 FROM STA. 18+64 TO STA. 18+82 - LNB - LT

FROM STA. 14+50 TO STA. 15+00 - LNB - RT
 Type of Liner = Class "B" Rip-Rap
 Min. D=1.5 Ft.
 Max. d=1.0 Ft.

BEGIN TIP PROJECT B-5527
BEGIN CONSTRUCTION
-LSB- STA. 13+21.00

LESLIE G. BENNETT
 WENDI G. BENNETT
 DB 1066 PG 233
 PB 20 PG 64



MATCHLINE
-LSB- STA. 22+25
SEE SHEET EC-7
MATCHLINE
-LNB- STA. 22+25
SEE SHEET EC-7

PROPOSED SHOULDER BERM GUTTER LIMITS:
 -LNB- STA. 21+69.00 TO BEGIN APPROACH SLAB - LT
 -LNB- STA. 21+69.00 TO BEGIN APPROACH SLAB - RT

Place Matting for Erosion Control
on Slope as Work Allows.
-LNB-RT Sta. 30+35 to Sta. 21+68

3/5/2024 X:\Raleigh\114-783\050 - B-5527 CE Update\05-CAD\B5527\Hydro\lics\CADD\PSH\B5527-EC_psh_06.dgn