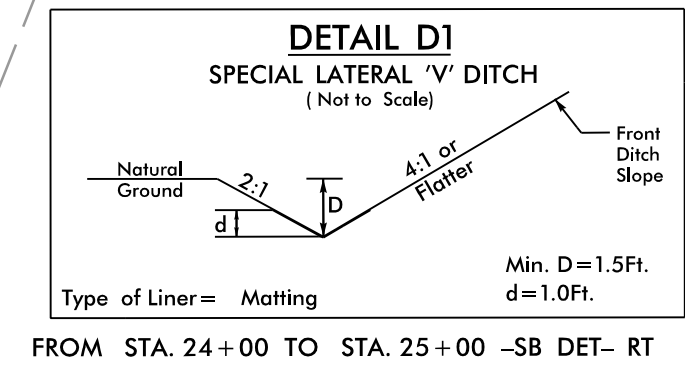




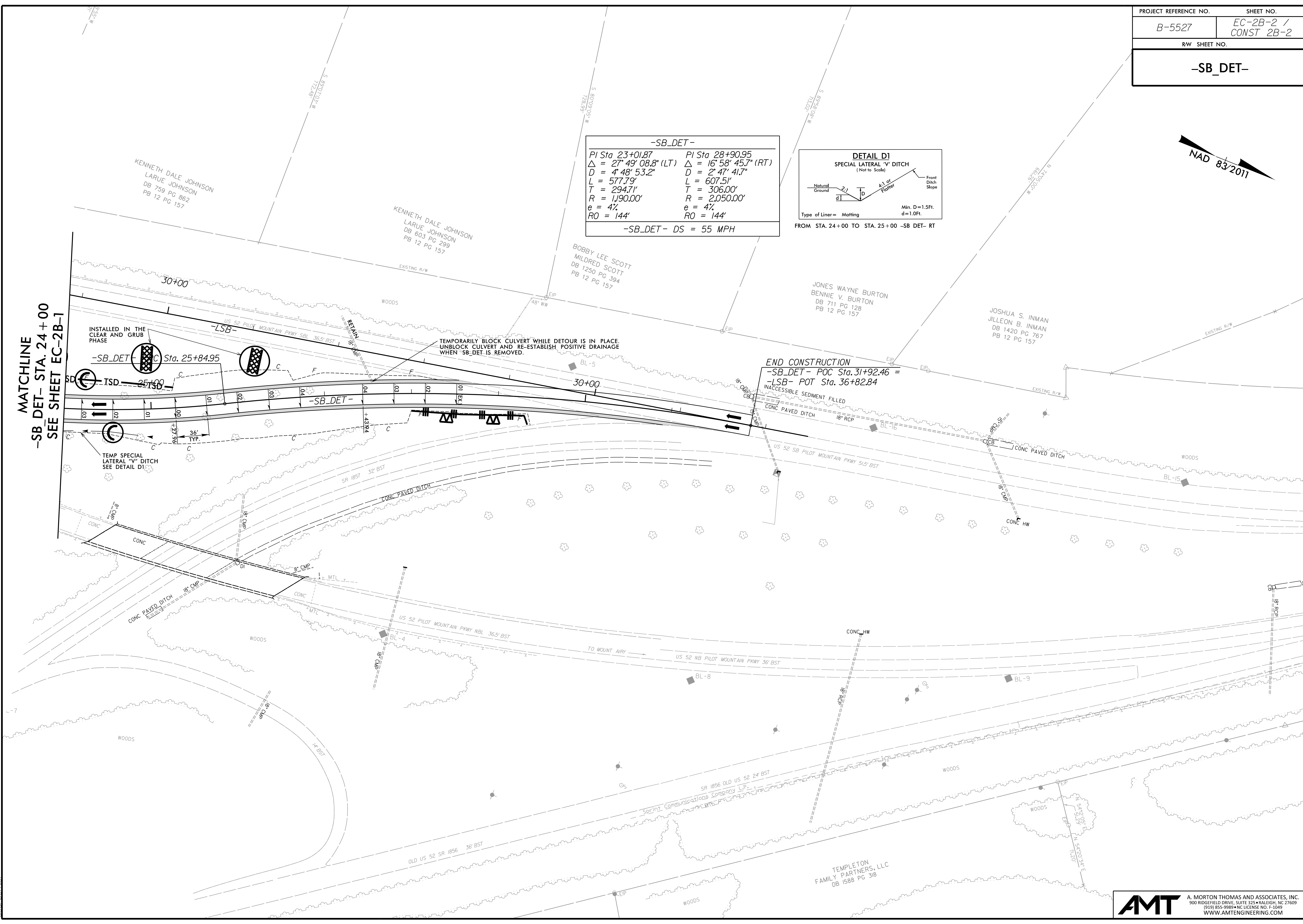
-SB\_DET-

PI Sta 23+01.87	PI Sta 28+90.95
$\Delta = 27^{\circ} 49' 08.8''$ (LT)	$\Delta = 16^{\circ} 58' 45.7''$ (RT)
D = 4' 48' 53.2"	D = 2' 47' 41.7"
L = 577.79'	L = 607.51'
T = 294.71'	T = 306.00'
R = 1,190.00'	R = 2,050.00'
e = 4%	e = 4%
RO = 144'	RO = 144'

-SB\_DET- DS = 55 MPH



MATCHLINE  
-SB\_DET- STA. 24+00  
SEE SHEET EC-2B-1



INSTALLED IN THE CLEAR AND GRUB PHASE

TEMP SPECIAL LATERAL 'V' DITCH SEE DETAIL D1

TEMPORARILY BLOCK CULVERT WHILE DETOUR IS IN PLACE. UNBLOCK CULVERT AND RE-ESTABLISH POSITIVE DRAINAGE WHEN -SB\_DET- IS REMOVED.

END CONSTRUCTION  
-SB\_DET- POC Sta. 31+92.46 =  
-LSB- POT Sta. 36+82.84

3/5/2024 X:\Raleigh\114-783\0050 - B-5527 CE Update\05-CAD\B5527\Hydraulics\CADD\PSH\B5527-EC\_psh\_02B-2.dgn