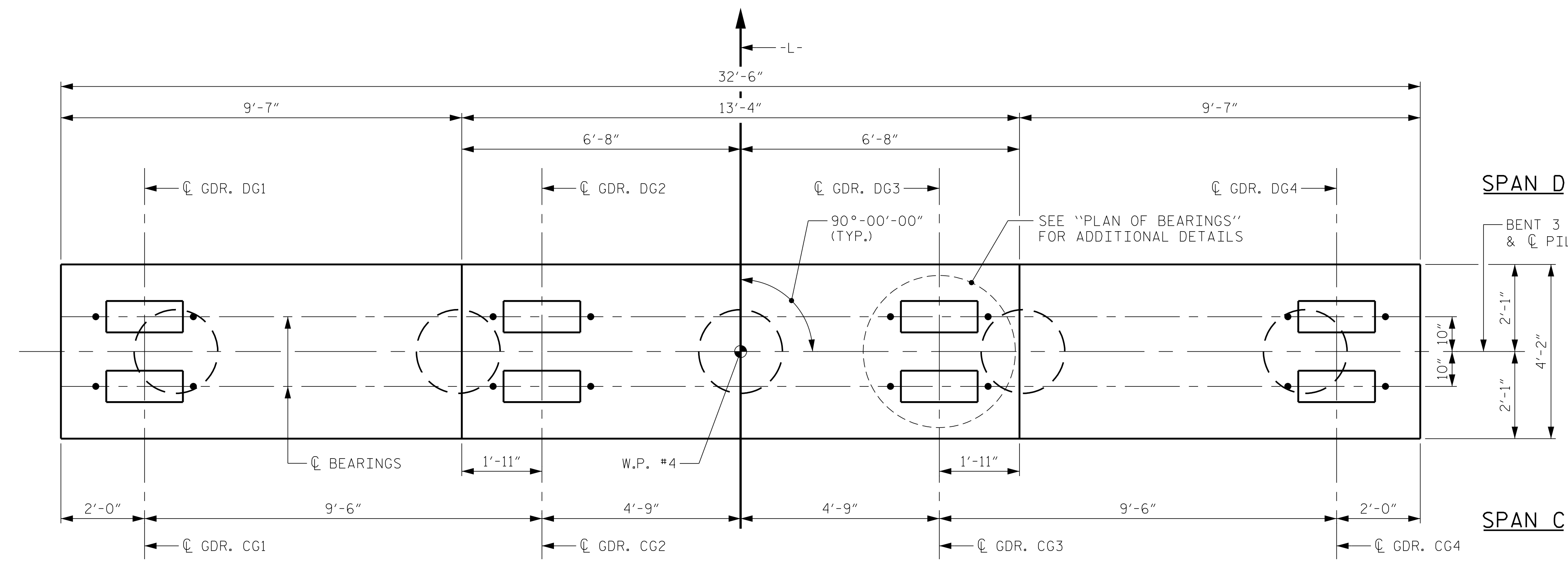


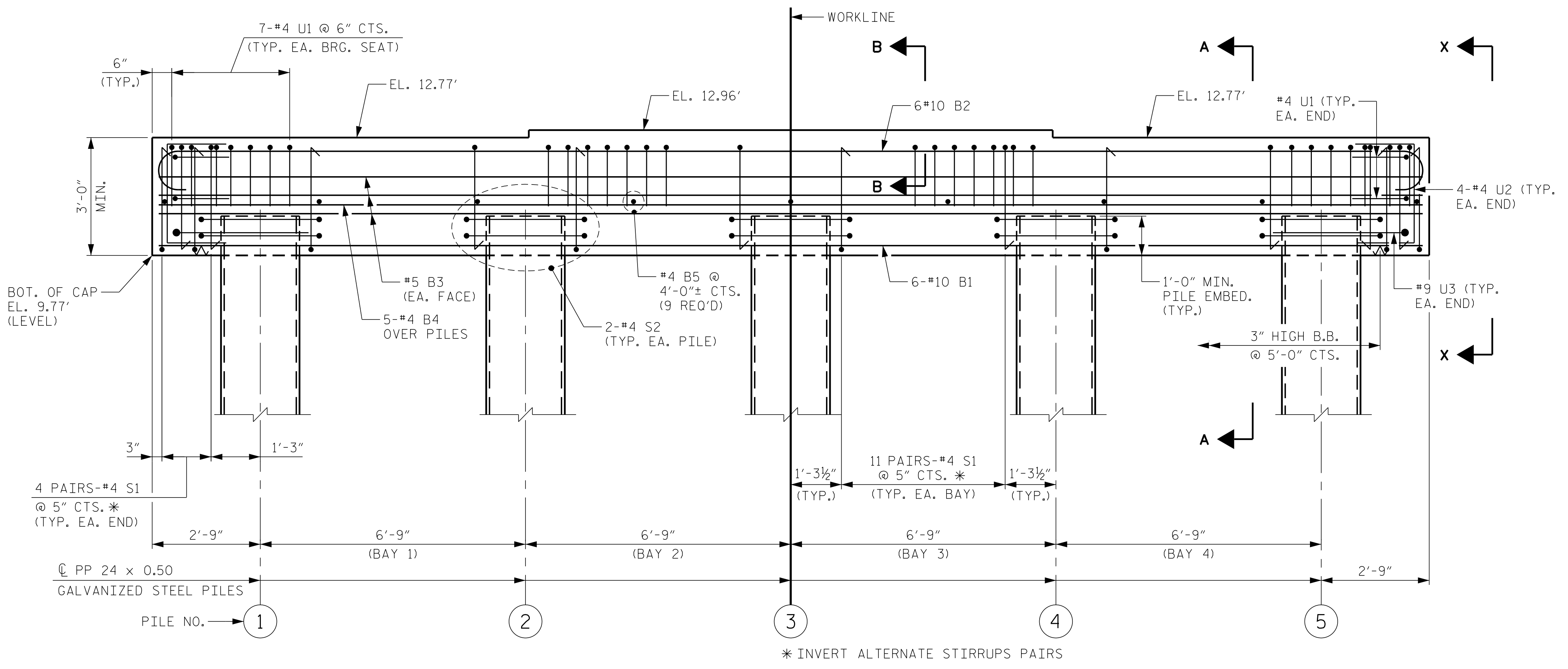
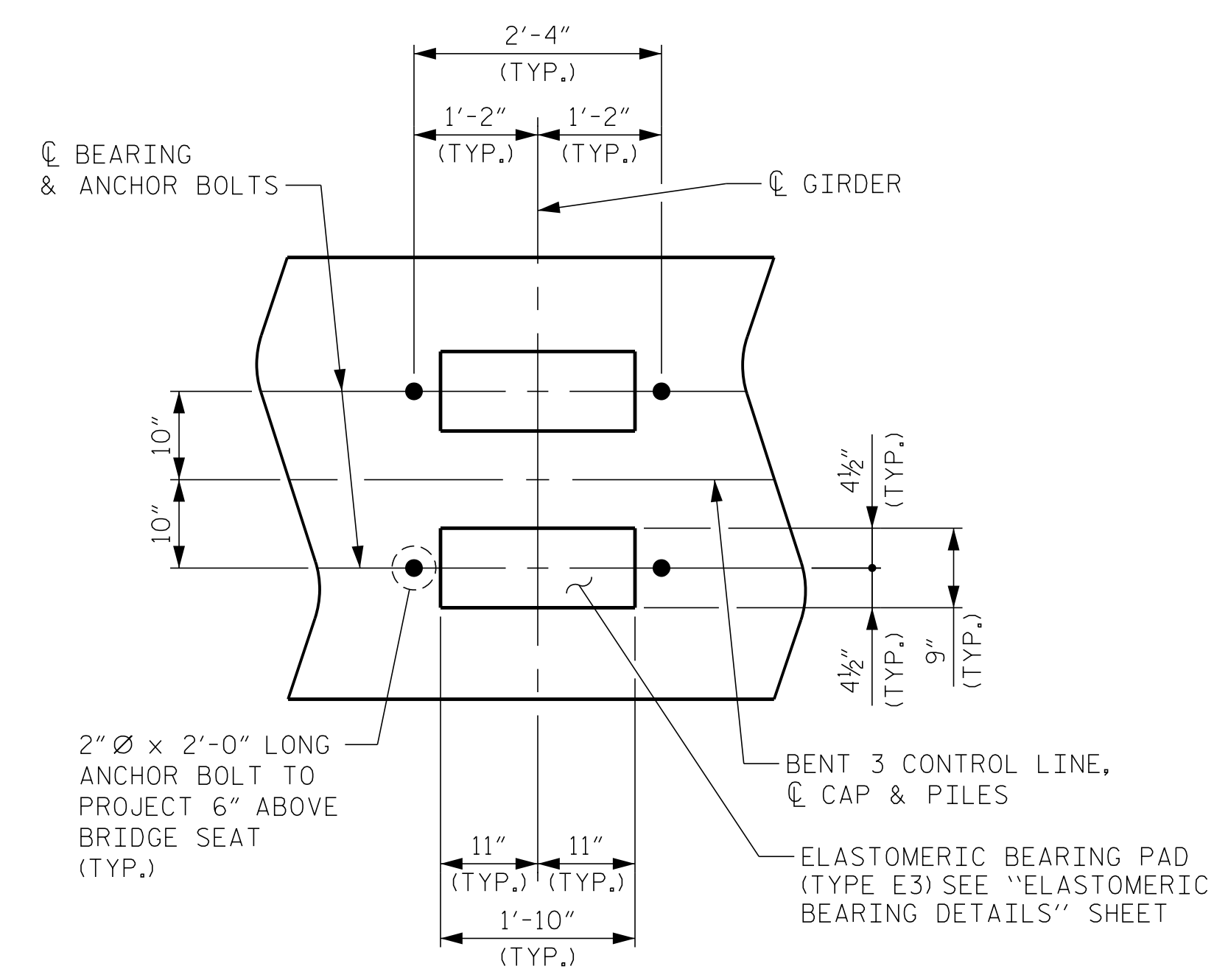
NOTES

- FOR SECTION A-A, PARTIAL SECTION B-B, AND VIEW X-X, SEE SHEET 2 OF 2.
- STIRRUPS AND "U" BARS IN CAP MAY BE SHIFTED AS NECESSARY TO CLEAR ANCHOR BOLTS.
- FOR REINFORCING STEEL IN PILE, SEE "24" STEEL PIPE PILE" SHEET.
- GALVANIZE THE TOP OF EACH INTERIOR BENT PILE A MINIMUM OF 38 FEET, GALVANIZE IN ACCORDANCE WITH SECTION 1076 OF THE STANDARD SPECIFICATION.
- FOR ADDITIONAL INFORMATION AND NOTES, SEE "GENERAL DRAWING" SHEETS 2 OF 4 AND 3 OF 4.
- CONCRETE DISPLAYED BY PP 24 x 0.50 GALVANIZED STEEL PILE HAS BEEN DEDUCTED FROM THE CONCRETE QUANTITY.



SPAN D

SPAN C



PROJECT NO. B-5156
PENDER COUNTY
 STATION: 22+90.50 -L-

SHEET 1 OF 2

Designed by: **Clay T. Poole**

Kimley»Horn

 421 Fayetteville Street, Suite 600

 Raleigh, NC 27601-1772

 Phone (919) 677-2000

 NC LICENSE # F-0102

STATE OF NORTH CAROLINA DEPARTMENT OF TRANSPORTATION RALEIGH						SHEET NO. S-36
SUBSTRUCTURE						TOTAL SHEETS 45
BENT 3 PLAN AND ELEVATION						
REVISIONS						
NO.	BY:	DATE:	NO.	BY:	DATE:	
1			3			
2			4			

**DOCUMENT NOT CONSIDERED FINAL
UNLESS ALL SIGNATURES COMPLETED**

1/10/2024 K:\BID Structures\Bridges\N.C. 011036491 - B-5156\Coord\Drawings\B5156_SML_B5_7002028.dgn

DRAWN BY: D. D. LOWERY DATE: 03/2023
 CHECKED BY: A. L. PHILLIPS DATE: 03/2023
 DESIGN ENGINEER OF RECORD: C. T. POOLE DATE: 03/2023