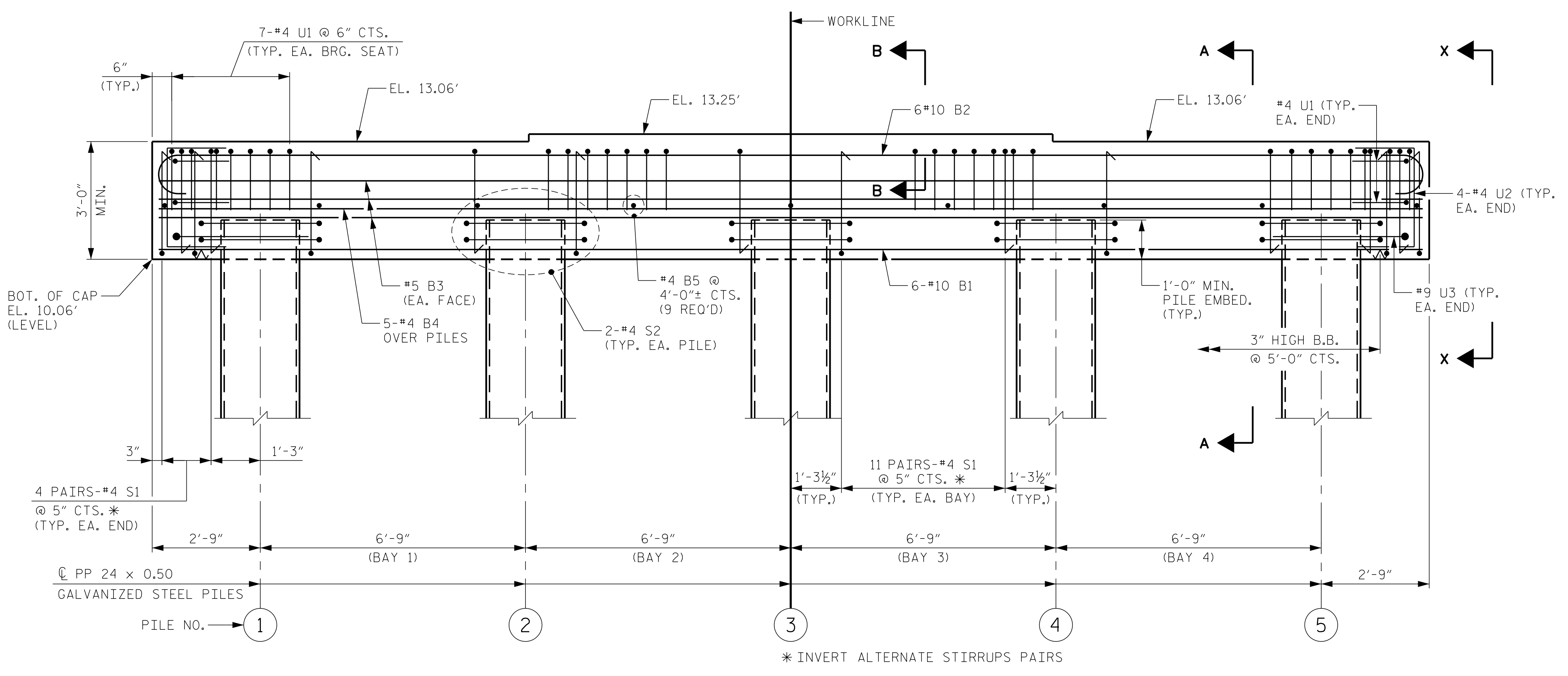
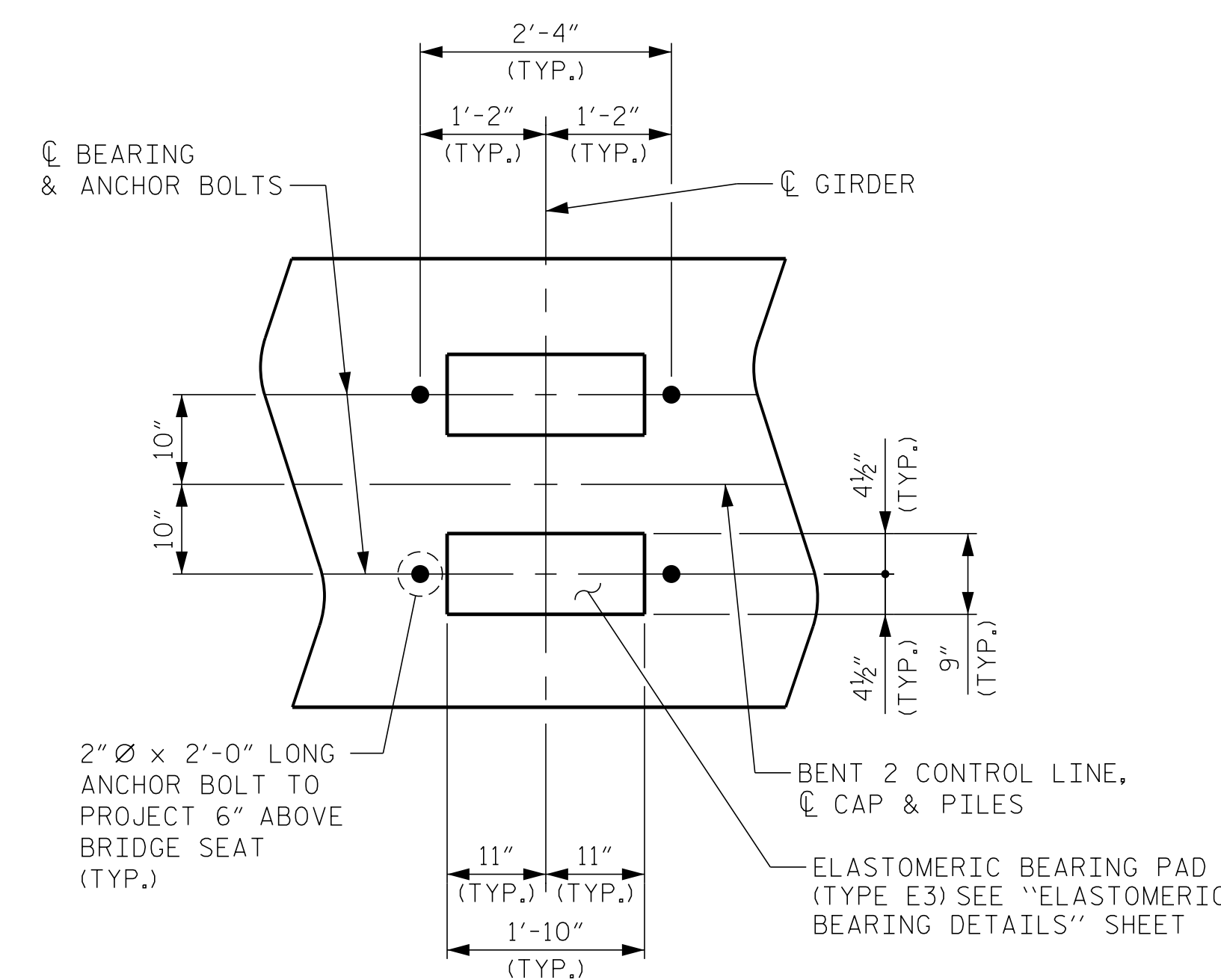
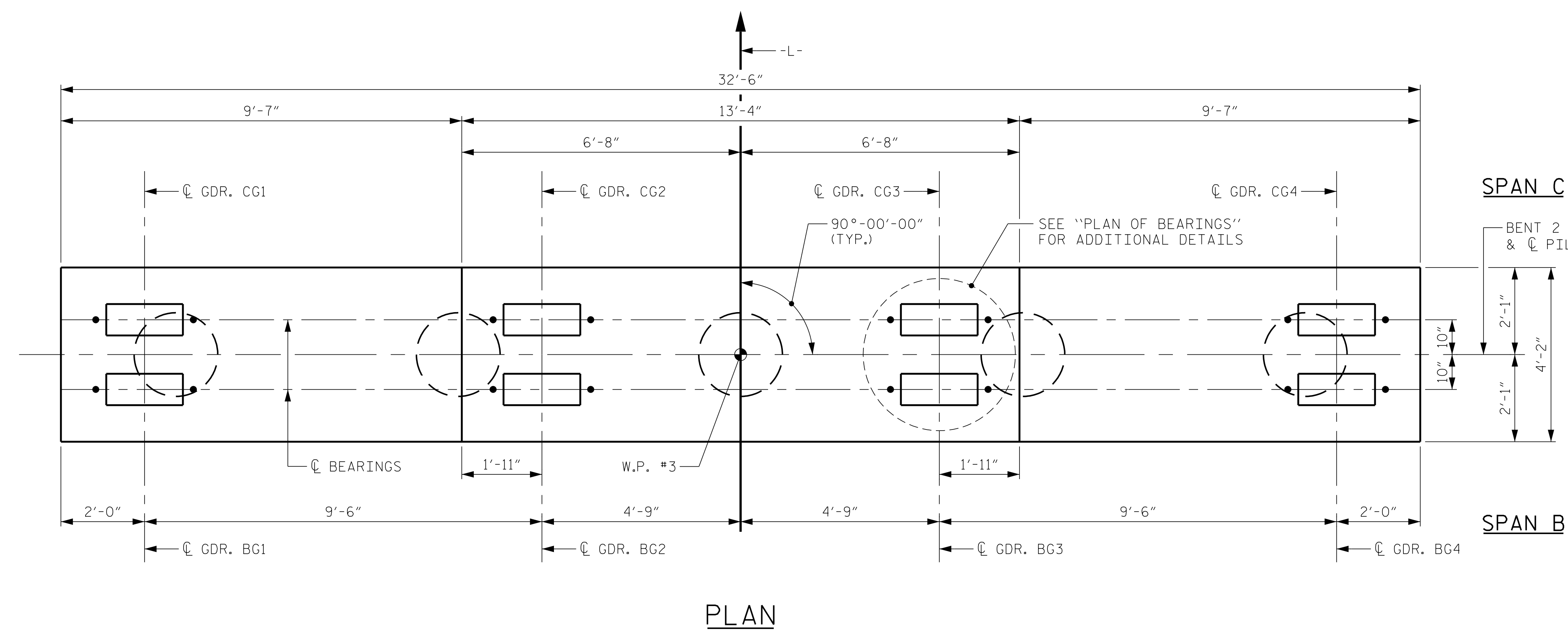


### NOTES

- FOR SECTION A-A, PARTIAL SECTION B-B, AND VIEW X-X, SEE SHEET 2 OF 2.
- STIRRUPS AND "U" BARS IN CAP MAY BE SHIFTED AS NECESSARY TO CLEAR ANCHOR BOLTS.
- FOR REINFORCING STEEL IN PILE, SEE "24" STEEL PIPE PILE" SHEET.
- GALVANIZE THE TOP OF EACH INTERIOR BENT PILE A MINIMUM OF 43 FEET, GALVANIZE IN ACCORDANCE WITH SECTION 1076 OF THE STANDARD SPECIFICATION.
- FOR ADDITIONAL INFORMATION AND NOTES, SEE "GENERAL DRAWING" SHEETS 2 OF 4 AND 3 OF 4.
- CONCRETE DISPLAYED BY PP 24 x 0.50 GALVANIZED STEEL PILE HAS BEEN DEDUCTED FROM THE CONCRETE QUANTITY.



K:\BID1-Structures\Bridges\NA\01036491 - B-5156\Coord\09\B5156\_SML\B3\_700208.dgn

PROJECT NO. B-5156  
PENDER COUNTY  
 STATION: 22+90.50 -L-

SHEET 1 OF 2

STATE OF NORTH CAROLINA  
 DEPARTMENT OF TRANSPORTATION  
 RALEIGH  
 SUBSTRUCTURE  
 BENT 2  
 PLAN AND ELEVATION

North Carolina Professional Engineer  
 SEAL 047653  
 CLAY T. POOLE  
 1/10/2024  
**Kimley»Horn**  
 421 Fayetteville Street, Suite 600  
 Raleigh, NC 27601-1772  
 Phone (919) 677-2000  
 NC LICENSE # F-0102

DRAWN BY: D. D. LOWERY DATE: 03/2023  
 CHECKED BY: A. L. PHILLIPS DATE: 03/2023  
 DESIGN ENGINEER OF RECORD: C.T. POOLE DATE: 03/2023

**DOCUMENT NOT CONSIDERED FINAL  
 UNLESS ALL SIGNATURES COMPLETED**

REVISIONS						SHEET NO.
NO.	BY:	DATE:	NO.	BY:	DATE:	S-34
1			3			TOTAL SHEETS
2			4			45