

NOTES

FOR SECTION A-A, PARTIAL SECTION B-B, AND VIEW X-X, SEE SHEET 2 OF 2.

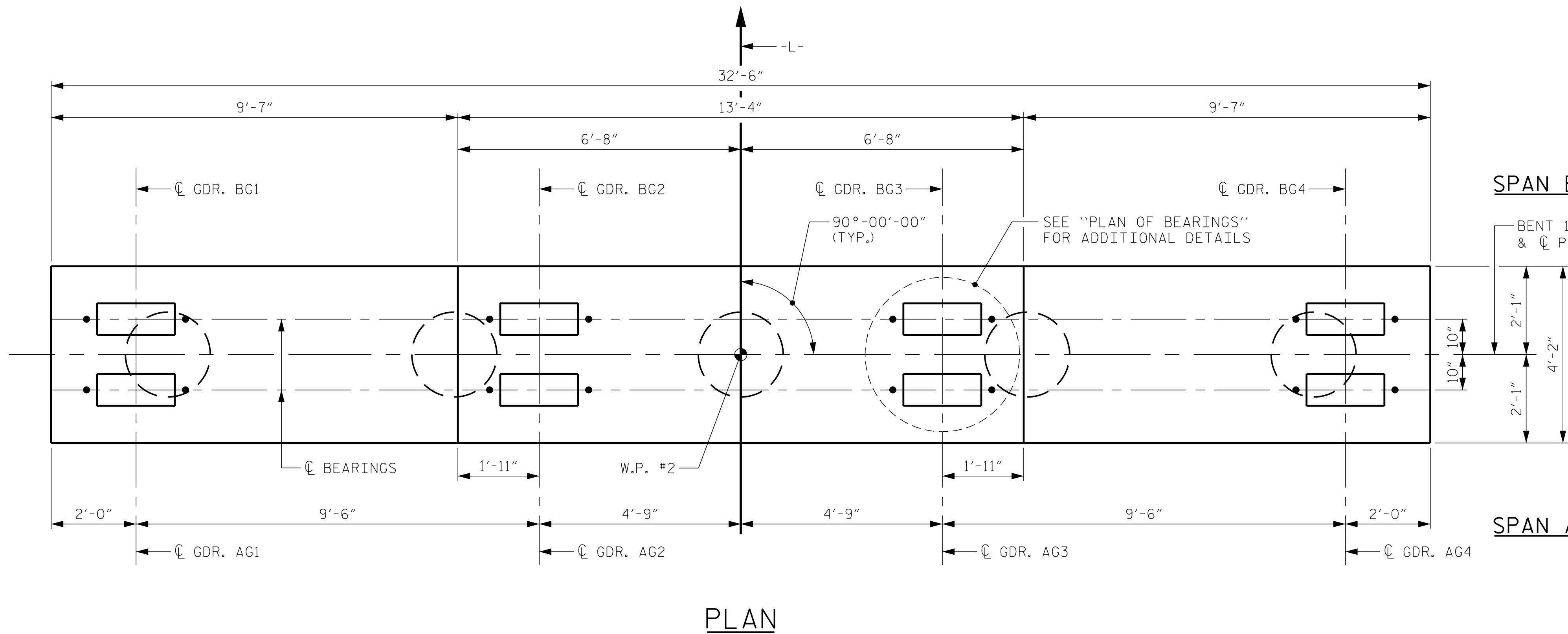
STIRRUPS AND "U" BARS IN CAP MAY BE SHIFTED AS NECESSARY TO CLEAR ANCHOR BOLTS.

FOR REINFORCING STEEL IN PILE, SEE "24" STEEL PIPE PILE" SHEET.

GALVANIZE THE TOP OF EACH INTERIOR BENT PILE A MINIMUM OF 35 FEET, GALVANIZE IN ACCORDANCE WITH SECTION 1076 OF THE STANDARD SPECIFICATION.

FOR ADDITIONAL INFORMATION AND NOTES, SEE "GENERAL DRAWING" SHEETS 2 OF 4 AND 3 OF 4.

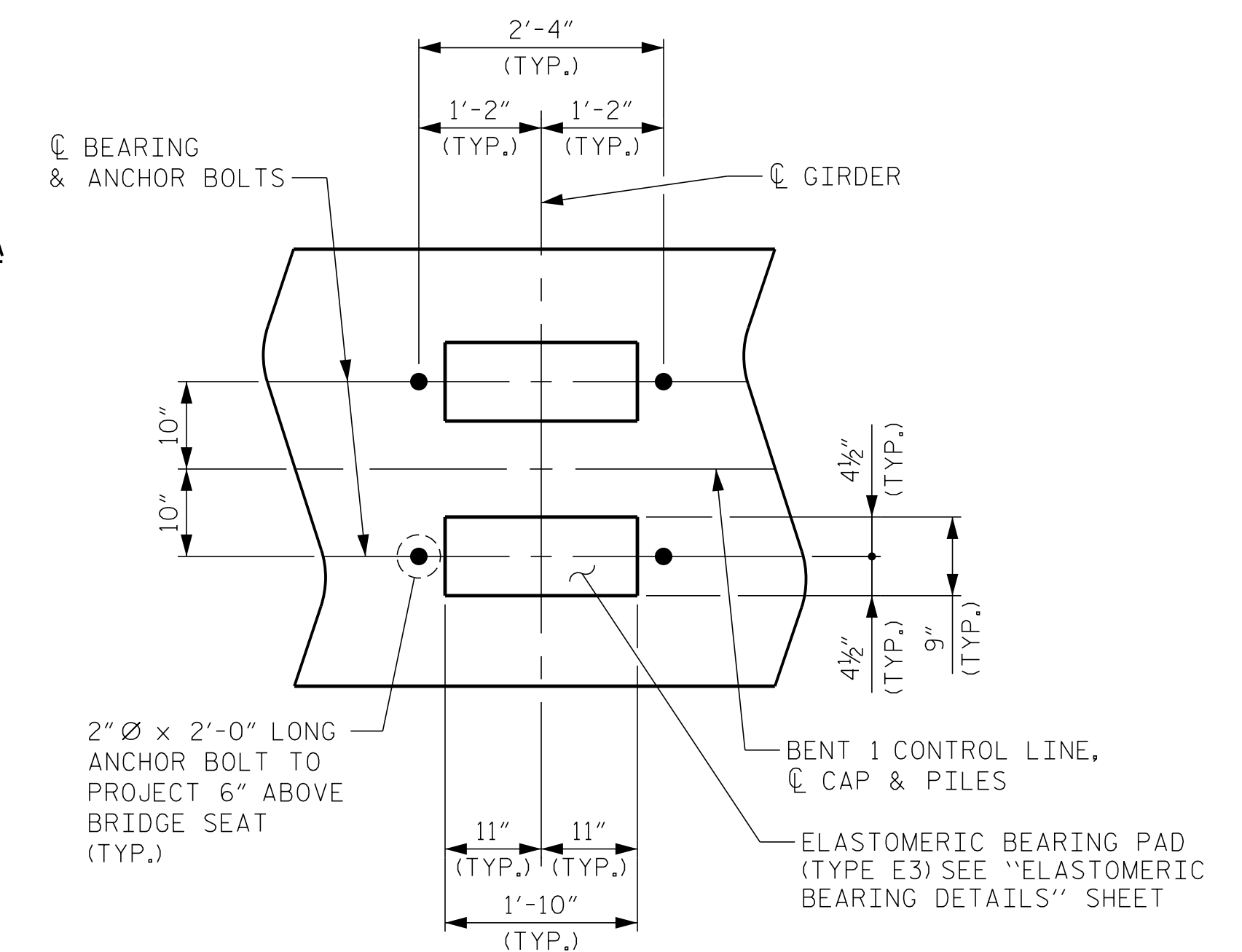
CONCRETE DISPLAYED BY PP 24 x 0.50 GALVANIZED STEEL PILE HAS BEEN DEDUCTED FROM THE CONCRETE QUANTITY.



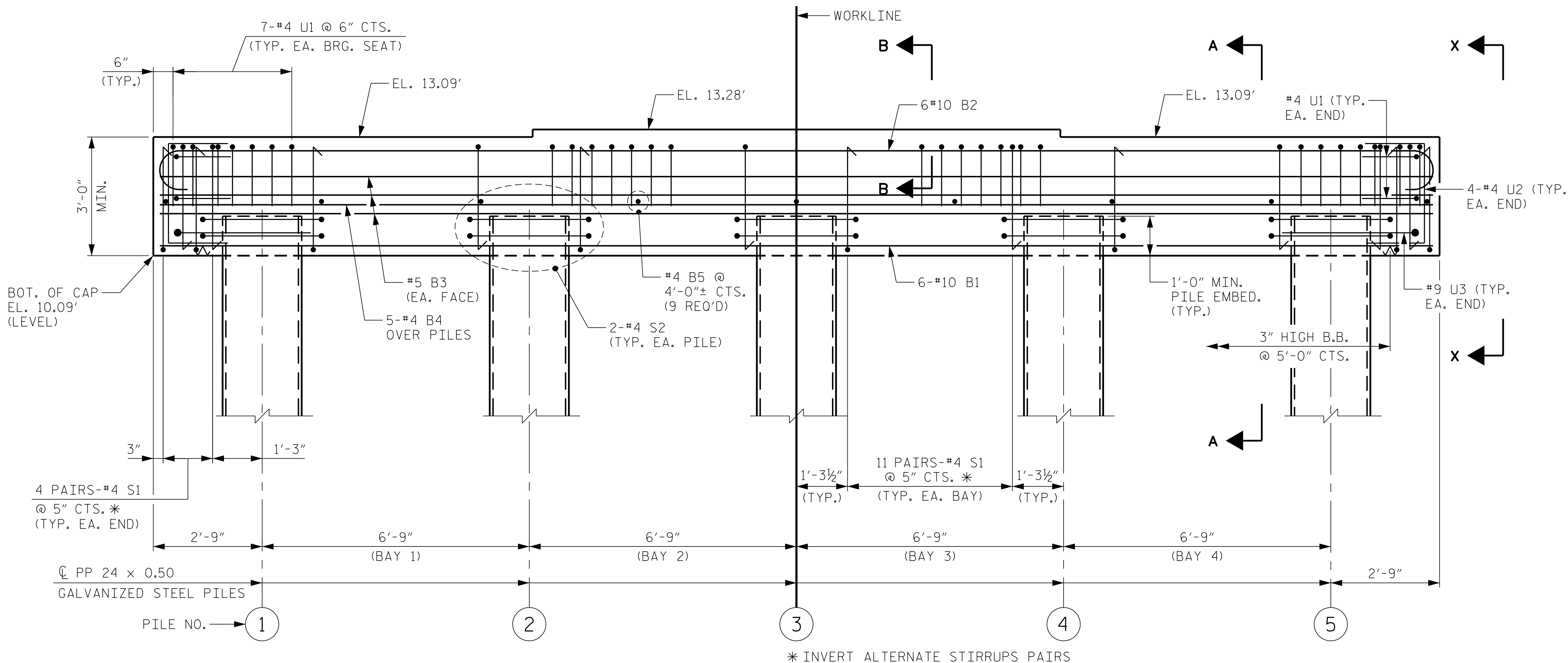
SPAN B

SPAN A

PLAN



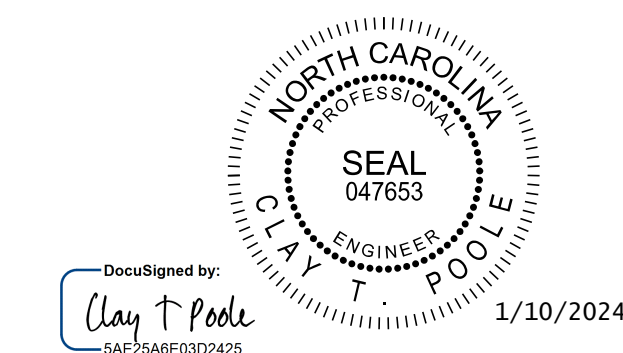
PLAN OF BEARINGS
(DIMENSIONS ARE TYPICAL EACH BEARING)



ELEVATION

PROJECT NO. B-5156
PENDER COUNTY
 STATION: 22+90.50 -L-

SHEET 1 OF 2



Kimley»Horn
 421 Fayetteville Street, Suite 600
 Raleigh, NC 27601-1772
 Phone (919) 677-2000
 NC LICENSE # F-0102

STATE OF NORTH CAROLINA
 DEPARTMENT OF TRANSPORTATION
 RALEIGH
 SUBSTRUCTURE
BENT 1
PLAN AND ELEVATION

REVISIONS						SHEET NO.
NO.	BY:	DATE:	NO.	BY:	DATE:	S-32
1			3			TOTAL SHEETS
2			4			45

**DOCUMENT NOT CONSIDERED FINAL
 UNLESS ALL SIGNATURES COMPLETED**

DRAWN BY: D. D. LOWERY DATE: 03/2023
 CHECKED BY: A. L. PHILLIPS DATE: 03/2023
 DESIGN ENGINEER OF RECORD: C. T. POOLE DATE: 03/2023

K:\BID1-Structures\Bridges\NC\101036491 - B-5156\Coord\09\B5156_SML.B1_1002028.dgn