

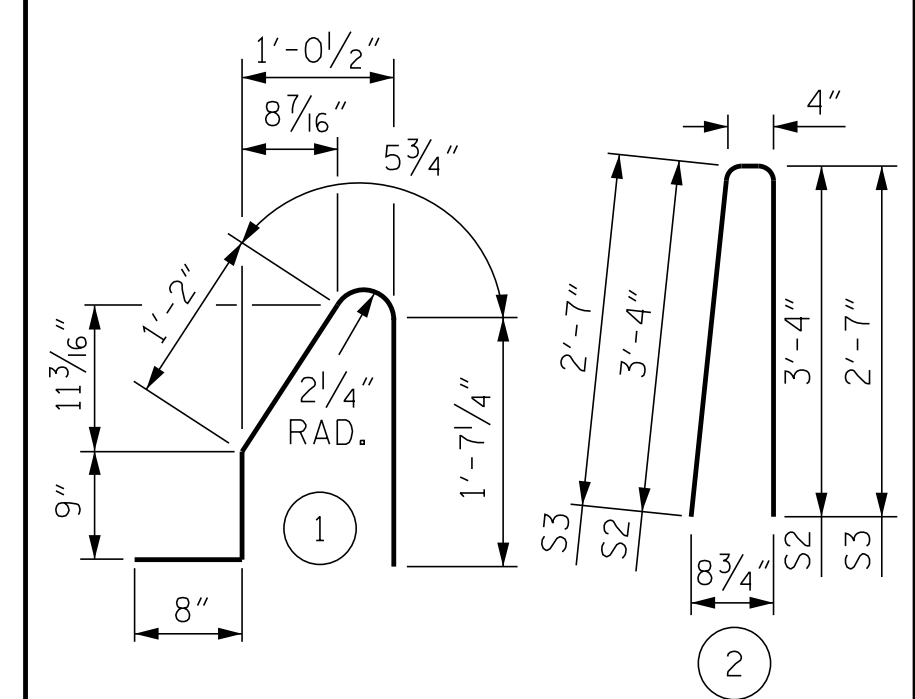
NOTES

THE BARRIER RAIL IN EACH SPAN SHALL NOT BE CAST UNTIL ALL SLAB CONCRETE IN THAT SPAN HAS BEEN CAST AND HAS REACHED A MINIMUM COMPRESSIVE STRENGTH OF 3,000 PSI.

ALL REINFORCING STEEL IN BARRIER RAILS SHALL BE EPOXY COATED.

GROOVED CONTRACTION JOINTS, 1/2" IN DEPTH, SHALL BE TOOLED IN ALL EXPOSED FACES OF THE BARRIER RAIL AND IN ACCORDANCE WITH ARTICLE 825-10(B) OF THE STANDARD SPECIFICATIONS. THE CONTRACTION JOINT SHALL BE LOCATED AT EACH THIRD POINT BETWEEN BARRIER RAIL EXPANSION JOINTS. ONLY ONE CONTRACTION JOINT IS REQUIRED AT MIDPOINT OF BARRIER RAIL SEGMENTS LESS THAN 20 FEET IN LENGTH AND NO CONTRACTION JOINTS ARE REQUIRED FOR THOSE SEGMENTS LESS THAN 10 FEET IN LENGTH.

BAR TYPES



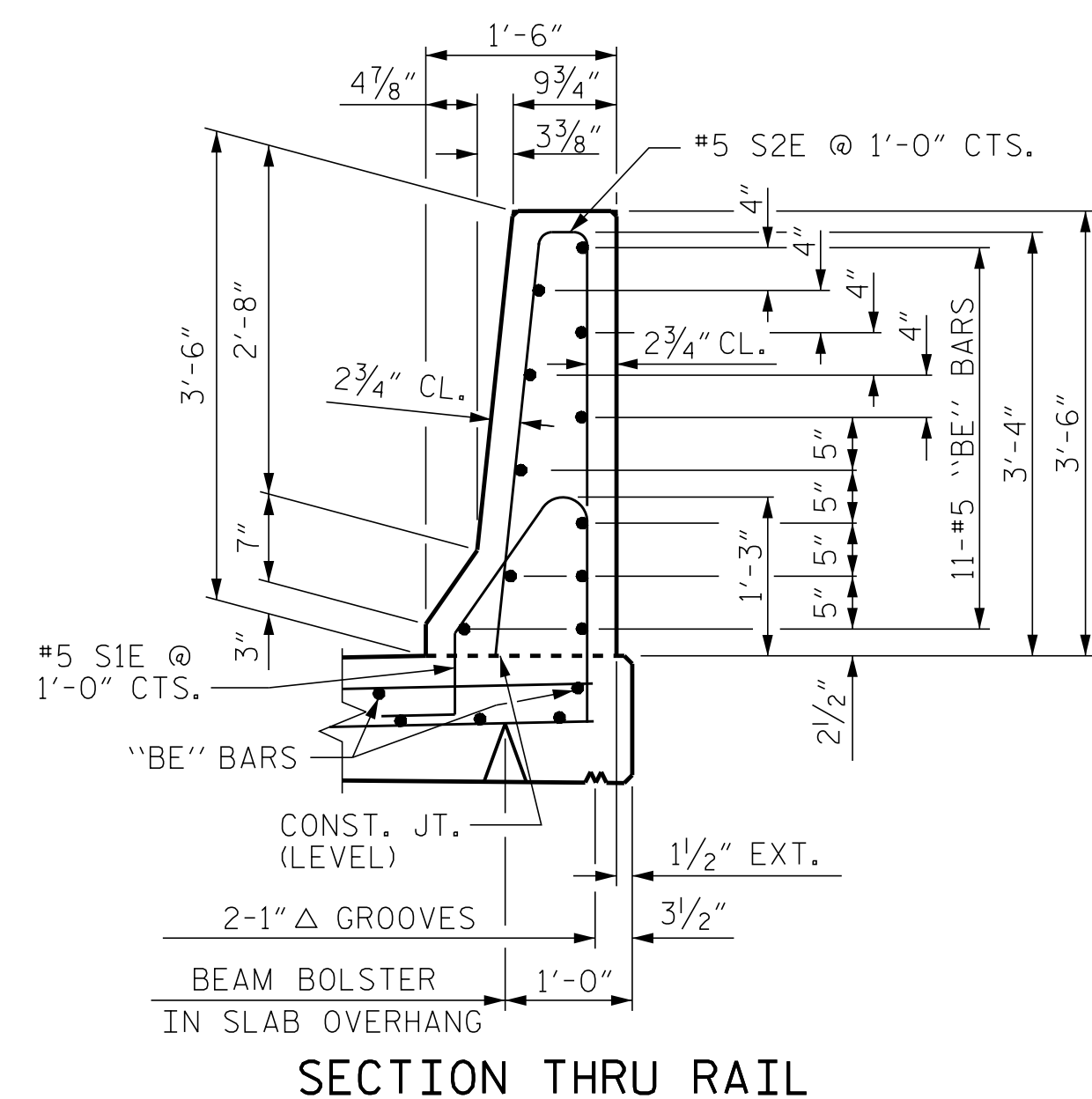
ALL BAR DIMENSIONS ARE OUT TO OUT

BILL OF MATERIAL

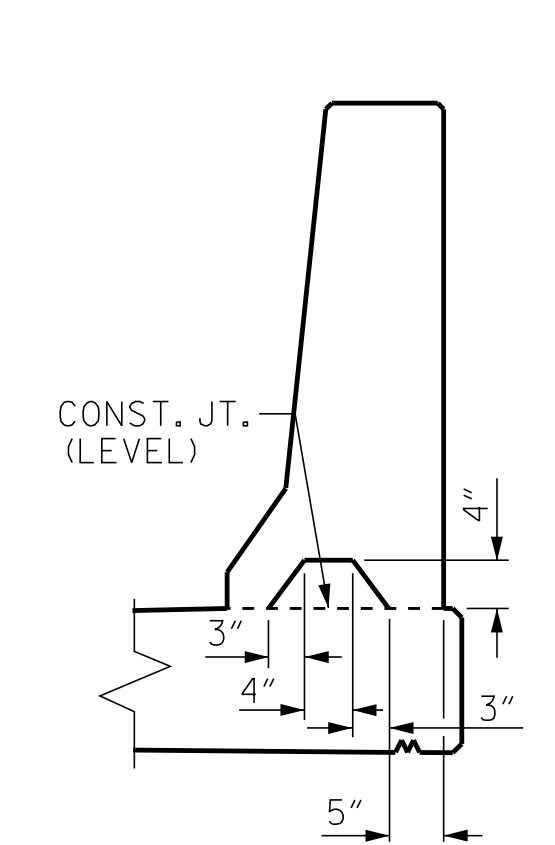
FOR CONCRETE BARRIER RAIL ONLY

BAR	NO.	SIZE	TYPE	LENGTH	WEIGHT
B1E	44	#5	STR	21'-8"	994
B2E	44	#5	STR	22'-1"	1,013
B3E	66	#5	STR	21'-3"	1,463
B4E	44	#5	STR	24'-2"	1,109
S1E	408	#5	1	4'-8"	1,986
S2E	400	#5	2	7'-0"	2,920
S3E	8	#5	2	5'-6"	46

EPOXY COATED REINFORCING STEEL	9,531 LBS.
CLASS AA CONCRETE	55.3 CU. YDS.
CONCRETE BARRIER RAIL	406.67 LIN. FT.

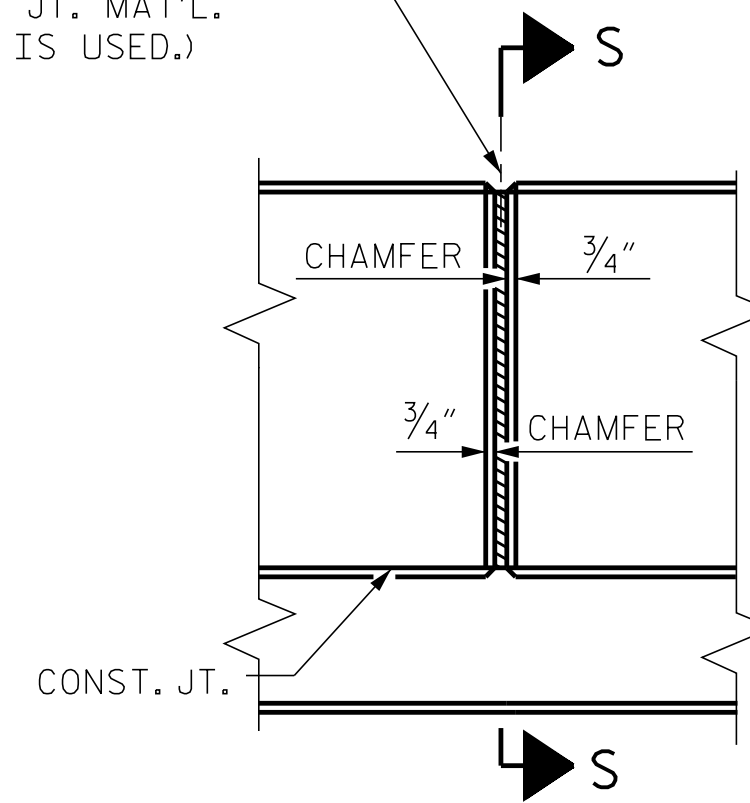


SECTION THRU RAIL

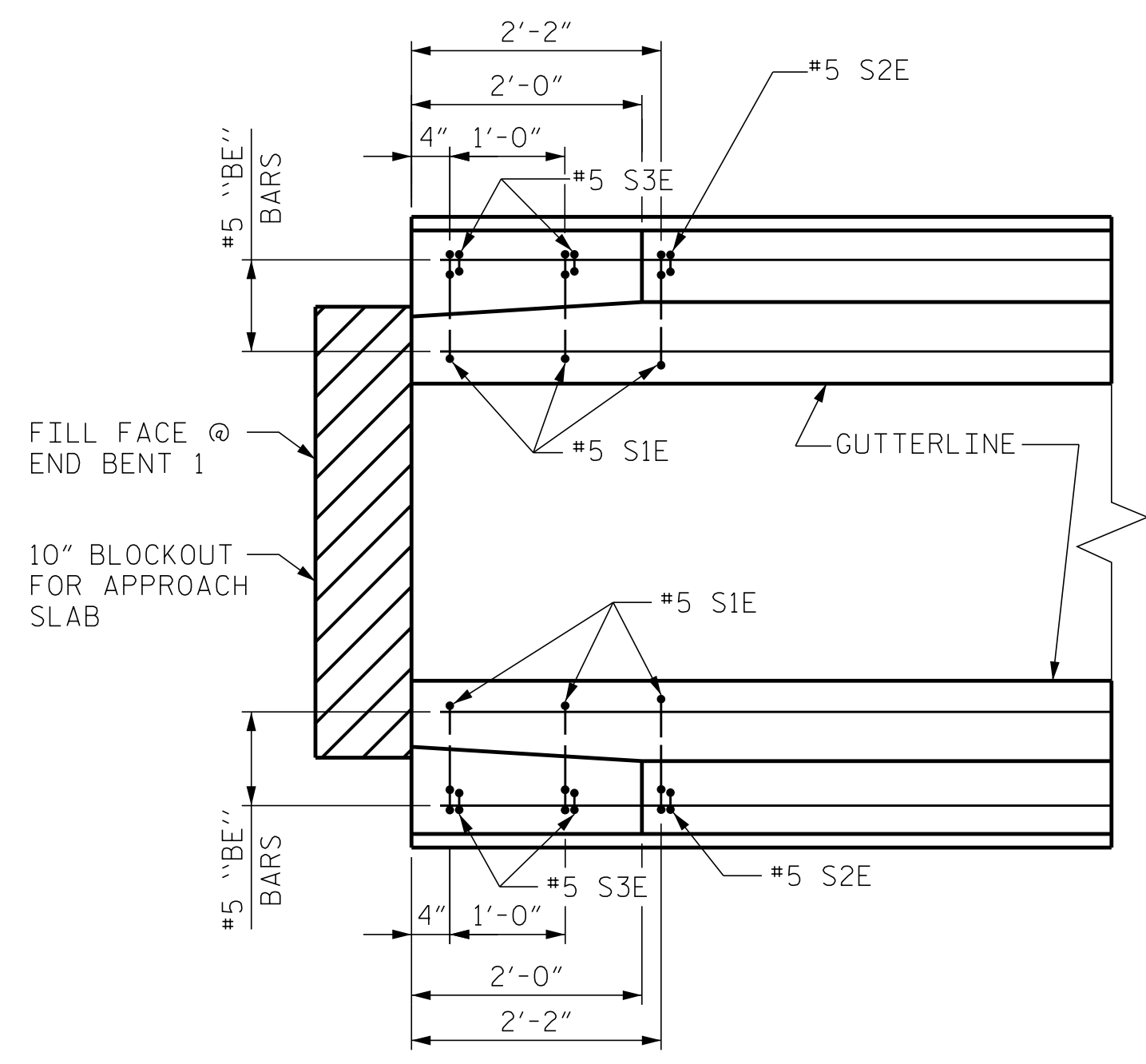


SECTION S-S
AT DAM IN OPEN JOINT
(THIS IS TO BE USED ONLY WHEN SLIP FORM IS USED)

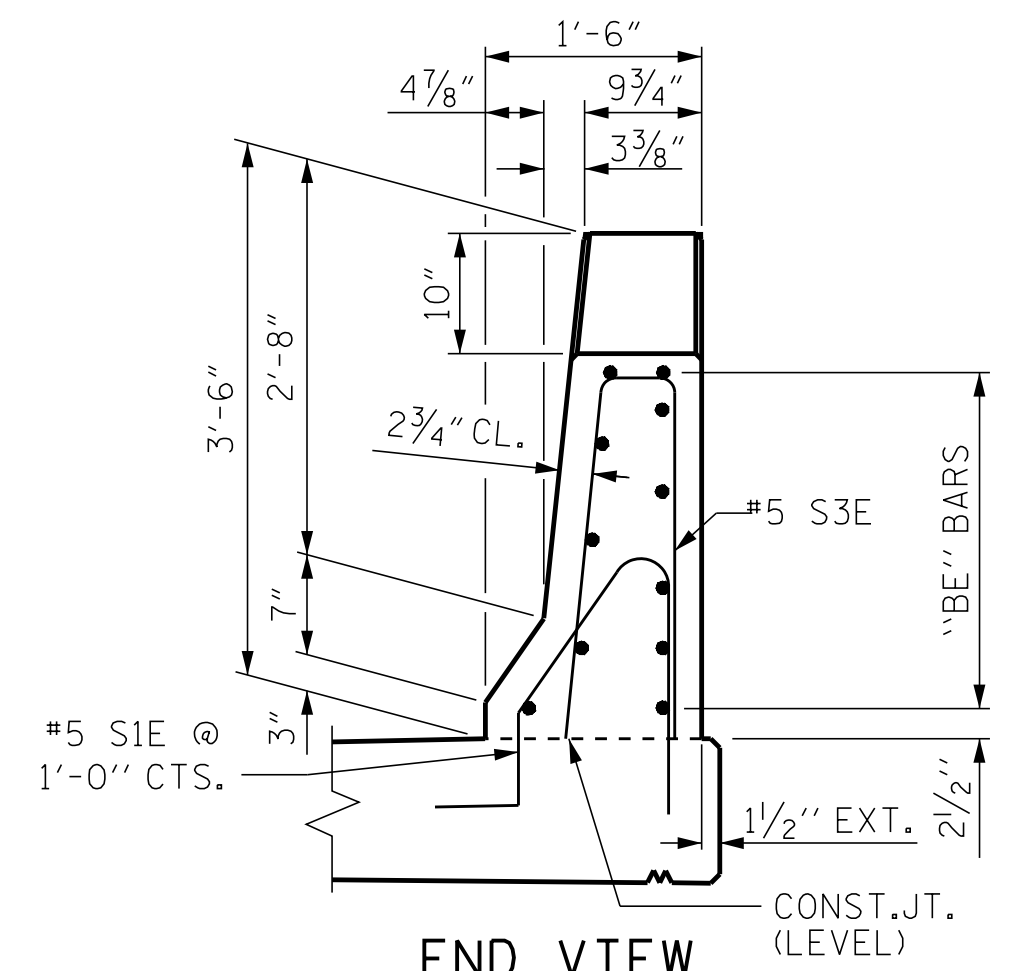
@ 1/2" EXP. JT. MAT'L HELD IN PLACE WITH GALVANIZED NAILS. (NOTE: OMIT EXP. JT. MAT'L. WHEN SLIP FORM IS USED.)



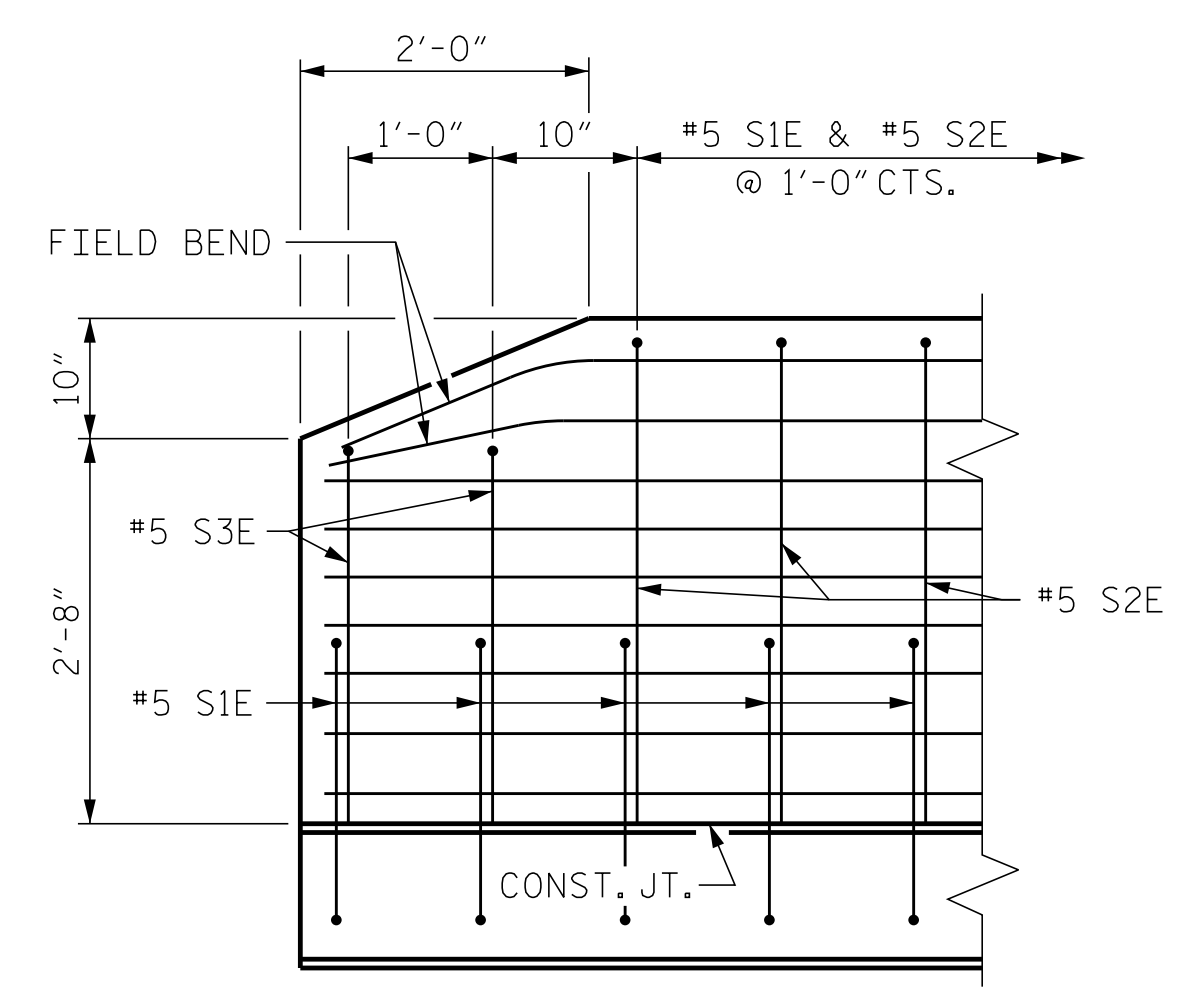
ELEVATION AT EXPANSION JOINTS
BARRIER RAIL DETAILS



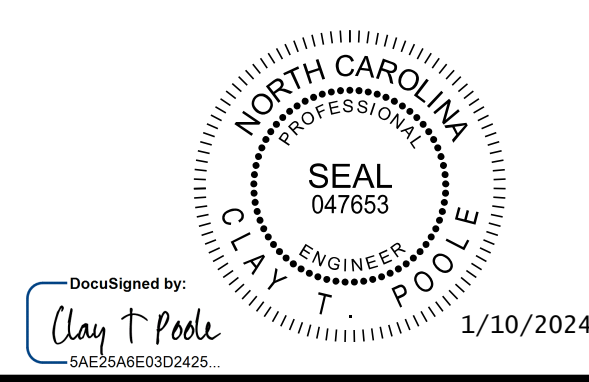
PLAN
END BENT 1 SHOWN, END BENT 2 SIMILAR



END VIEW
END OF RAIL DETAILS



SIDE VIEW



Kimley»Horn
421 Fayetteville Street, Suite 600
Raleigh, NC 27601-1772
Phone (919) 677-2000 NC LICENSE # F-0102

PROJECT NO. B-5156
PENDER COUNTY
STATION: 22+90.50 -L-

SHEET 2 OF 2

STATE OF NORTH CAROLINA
DEPARTMENT OF TRANSPORTATION
RALEIGH
STANDARD
CONCRETE
BARRIER RAIL

REVISIONS						SHEET NO.
NO.	BY:	DATE:	NO.	BY:	DATE:	S-26
1			3			TOTAL SHEETS
2			4			45

**DOCUMENT NOT CONSIDERED FINAL
UNLESS ALL SIGNATURES COMPLETED**

This document, together with the concepts and designs presented herein, is an instrument of service. It is intended only for the specific purpose and area for which it was prepared. No other use or application is authorized without the written authorization and adoption by Kimley-Horn and Associates, Inc. shall be without liability to Kimley-Horn and Associates, Inc.
Copyright Kimley-Horn and Associates, Inc., 2024

STD. NO. CBR1

K:\BID Structures\Bridges\NA\101036491 - B-5156\Coof\09\B5156_SML_BR2_700028.dgn 1/10/2024

ASSEMBLED BY : D. D. LOWERY	DATE : 03/2023
CHECKED BY : C. T. POOLE	DATE : 03/2023
DRAWN BY : ARB 5/87	REV. 7/12 MAA/GM
CHECKED BY : SJD 9/87	REV. 6/13 MAA/GM
	REV. 12/17 MAA/THC