

**NOTES**

AT ALL FIXED POINTS OF SUPPORT, NUTS FOR ANCHOR BOLTS ARE TO BE TIGHTENED FINGER TIGHT AND THEN BACKED OFF 1/2 TURN. THE THREAD OF THE NUT AND BOLT SHALL THEN BE BURRED WITH A SHARP POINTED TOOL.

THE 2" DIA. PIPE SLEEVE SHALL BE CUT FROM SCHEDULE 40 PVC PLASTIC PIPE. THE PVC PLASTIC PIPE SHALL MEET THE REQUIREMENTS OF ASTM D1785.

STEEL SOLE PLATES, ANCHOR BOLTS, NUTS, AND WASHERS SHALL BE GALVANIZED IN ACCORDANCE WITH THE STANDARD SPECIFICATIONS.

PRIOR TO WELDING, GRIND THE GALVANIZED SURFACE OF THE PORTION OF THE EMBEDDED PLATE AND SOLE PLATE THAT ARE TO BE WELDED. AFTER WELDING, DAMAGED GALVANIZED SURFACES SHALL BE REPAIRED IN ACCORDANCE WITH THE STANDARD SPECIFICATIONS.

WHEN WELDING THE SOLE PLATE TO THE EMBEDDED PLATE IN THE GIRDER, USE TEMPERATURE INDICATING WAX PENS, OR OTHER SUITABLE MEANS, TO ENSURE THAT THE TEMPERATURE OF THE SOLE PLATE DOES NOT EXCEED 300°F. TEMPERATURES ABOVE THIS MAY DAMAGE THE ELASTOMER.

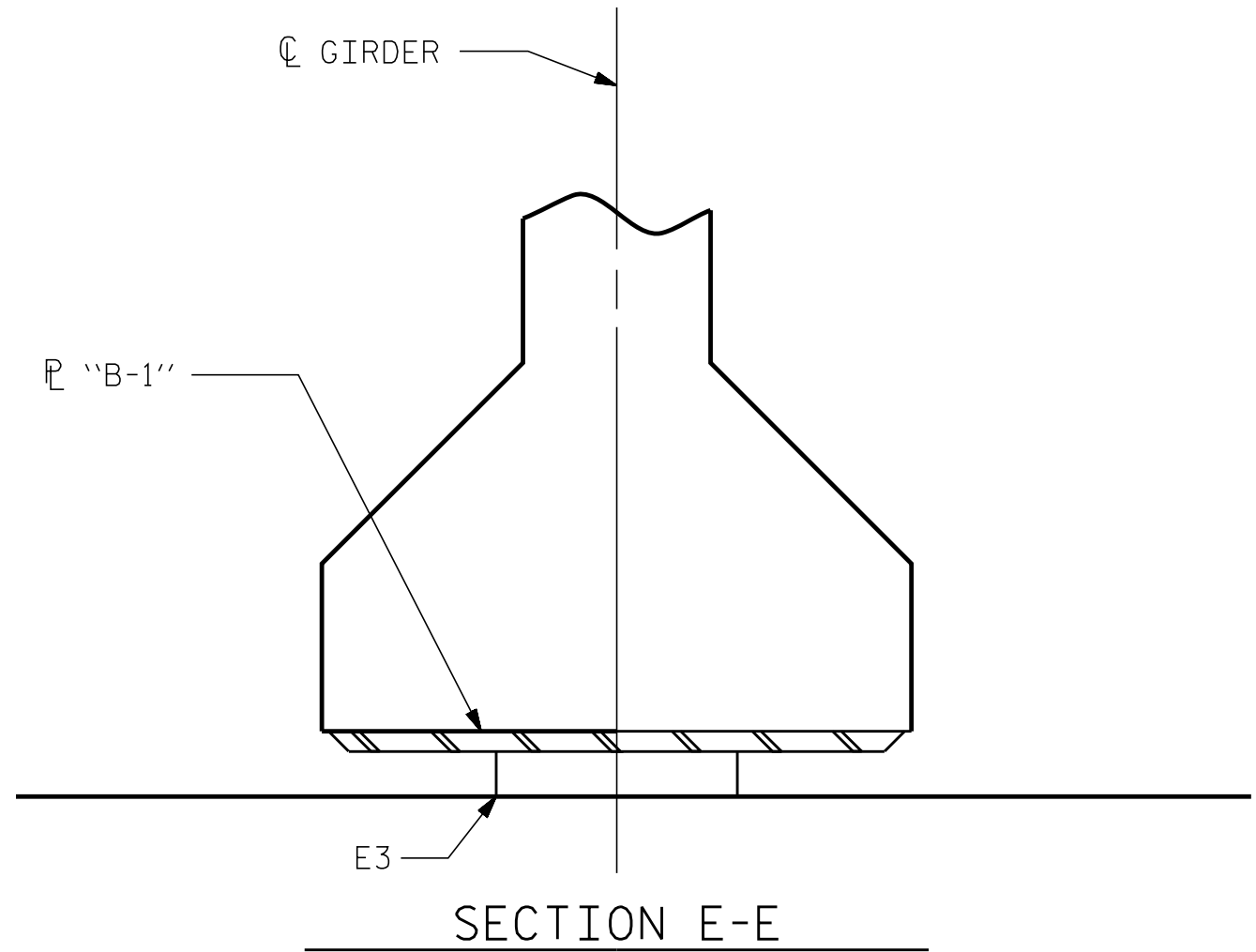
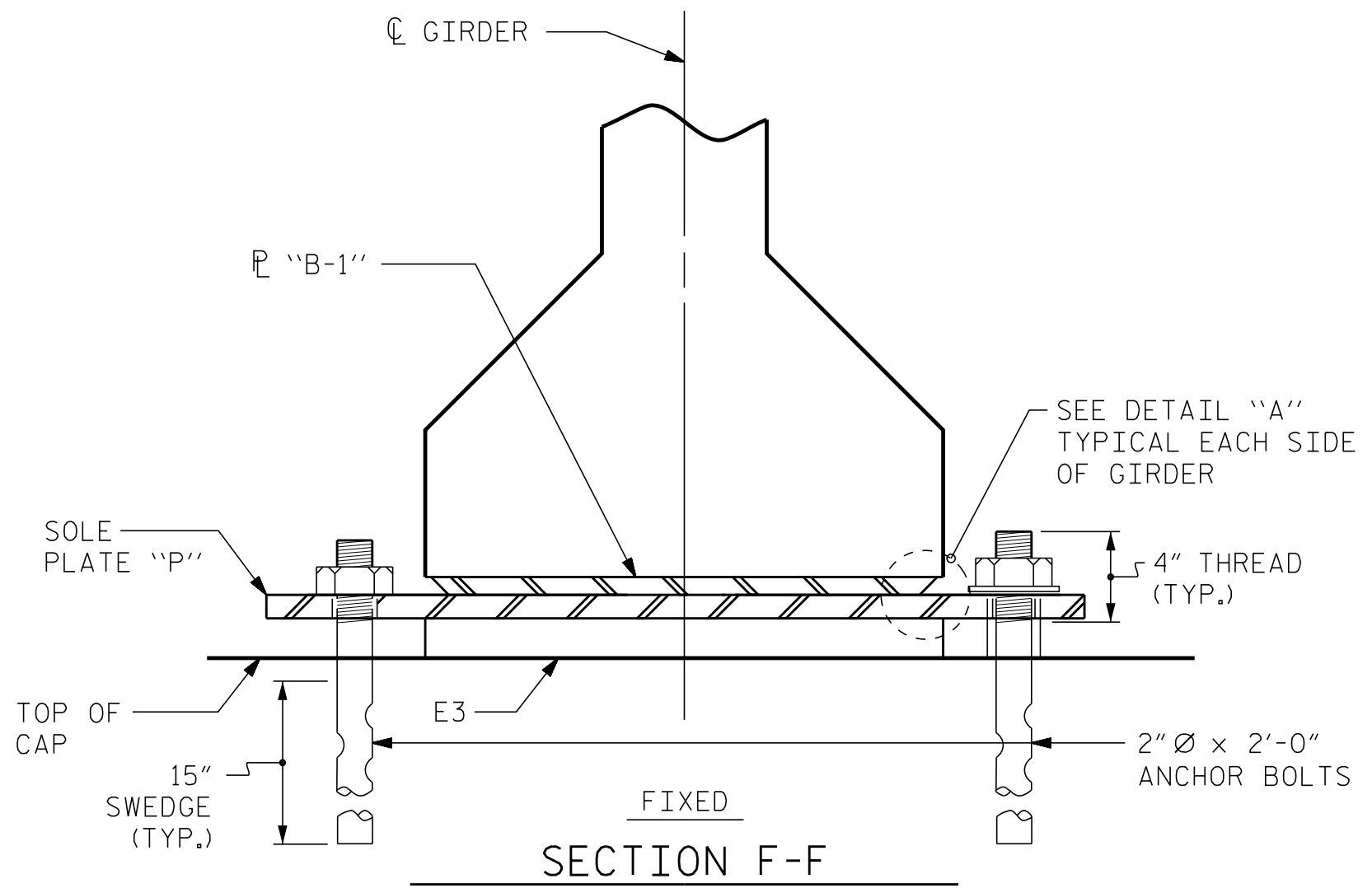
SOLE PLATE "P", BOLTS, NUTS, AND WASHERS SHALL BE INCLUDED IN THE PAY ITEM FOR PRESTRESSED CONCRETE GIRDERS.

ANCHOR BOLTS SHALL MEET THE REQUIREMENTS OF ASTM A449. NUTS SHALL MEET THE REQUIREMENTS OF AASHTO M291-DH OR AASHTO M292-2H. WASHERS SHALL MEET THE REQUIREMENTS OF AASHTO M293. SHOP DRAWINGS ARE NOT REQUIRED FOR ANCHOR BOLT, NUTS AND WASHERS. SHOP INSPECTION IS REQUIRED.

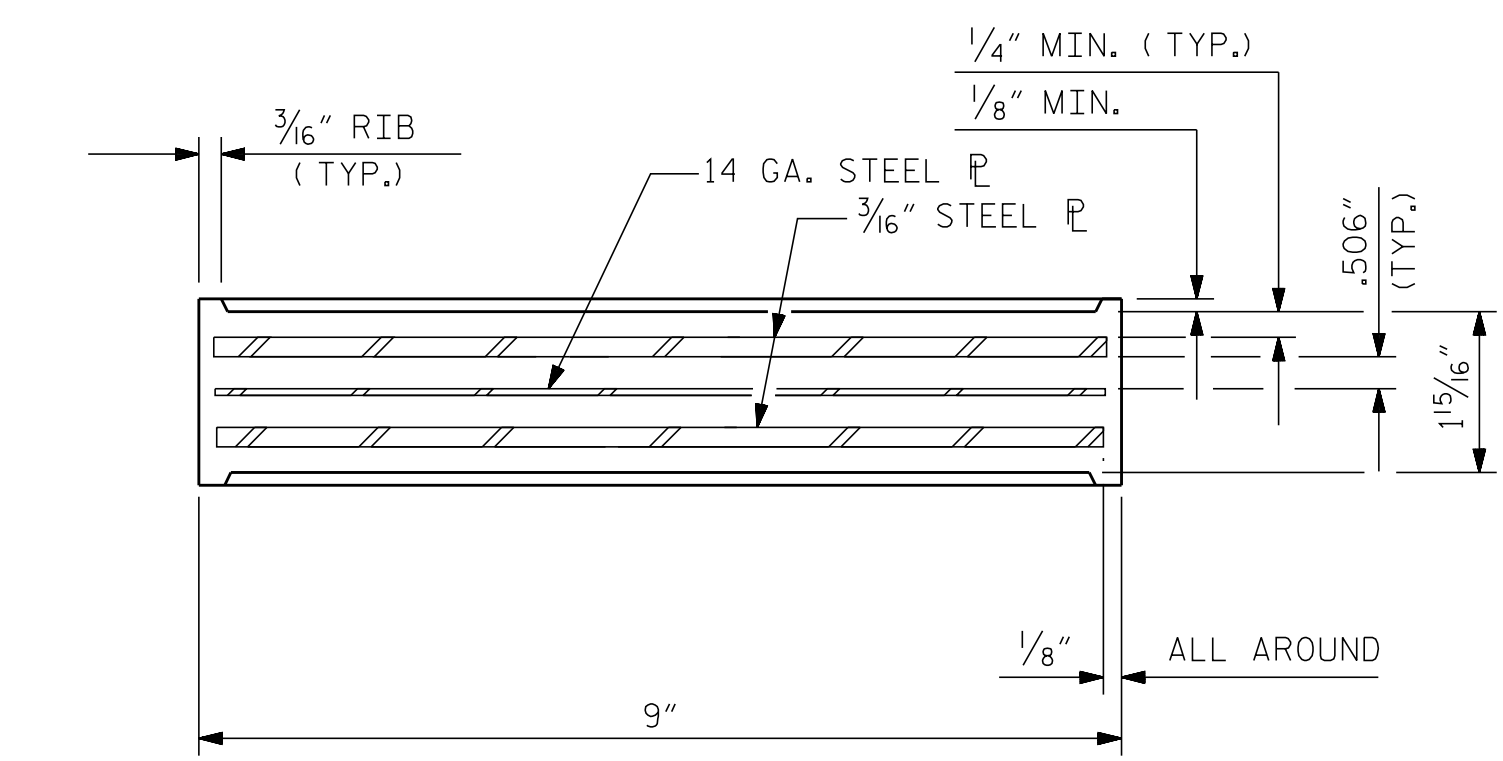
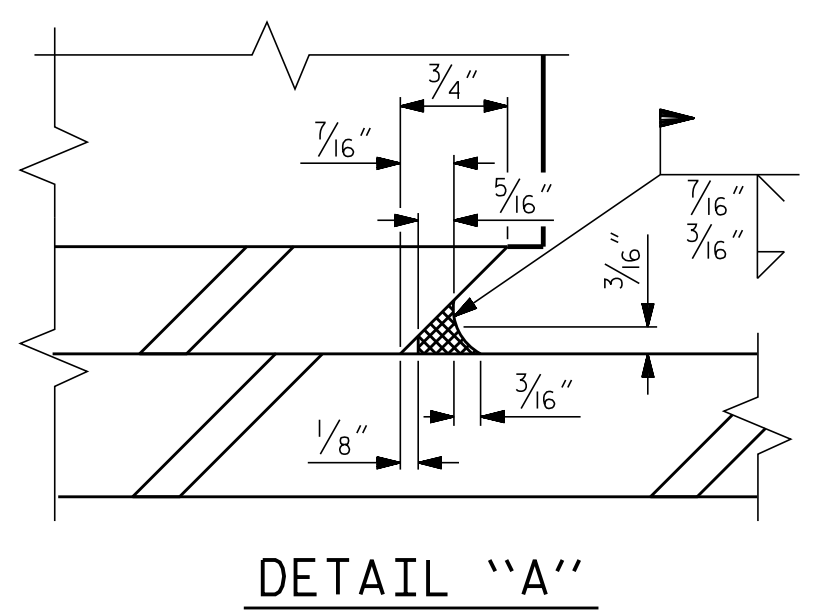
ALL SURFACES OF BEARING PLATES SHALL BE SMOOTH AND STRAIGHT.

THE ELASTOMER IN THE STEEL REINFORCED BEARINGS SHALL HAVE A SHEAR MODULUS OF 0.160 KSI, IN ACCORDANCE WITH AASHTO M251.

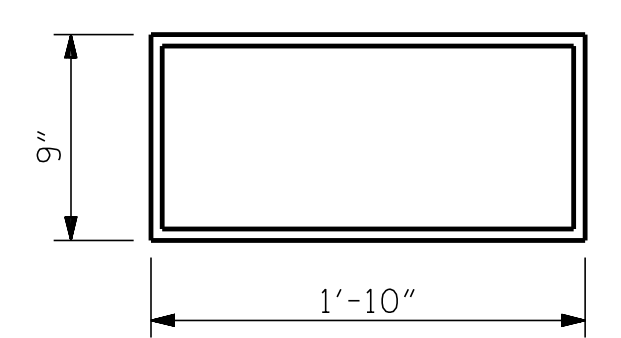
ALL SOLE PLATES SHALL BE AASHTO M270 GRADE 36.



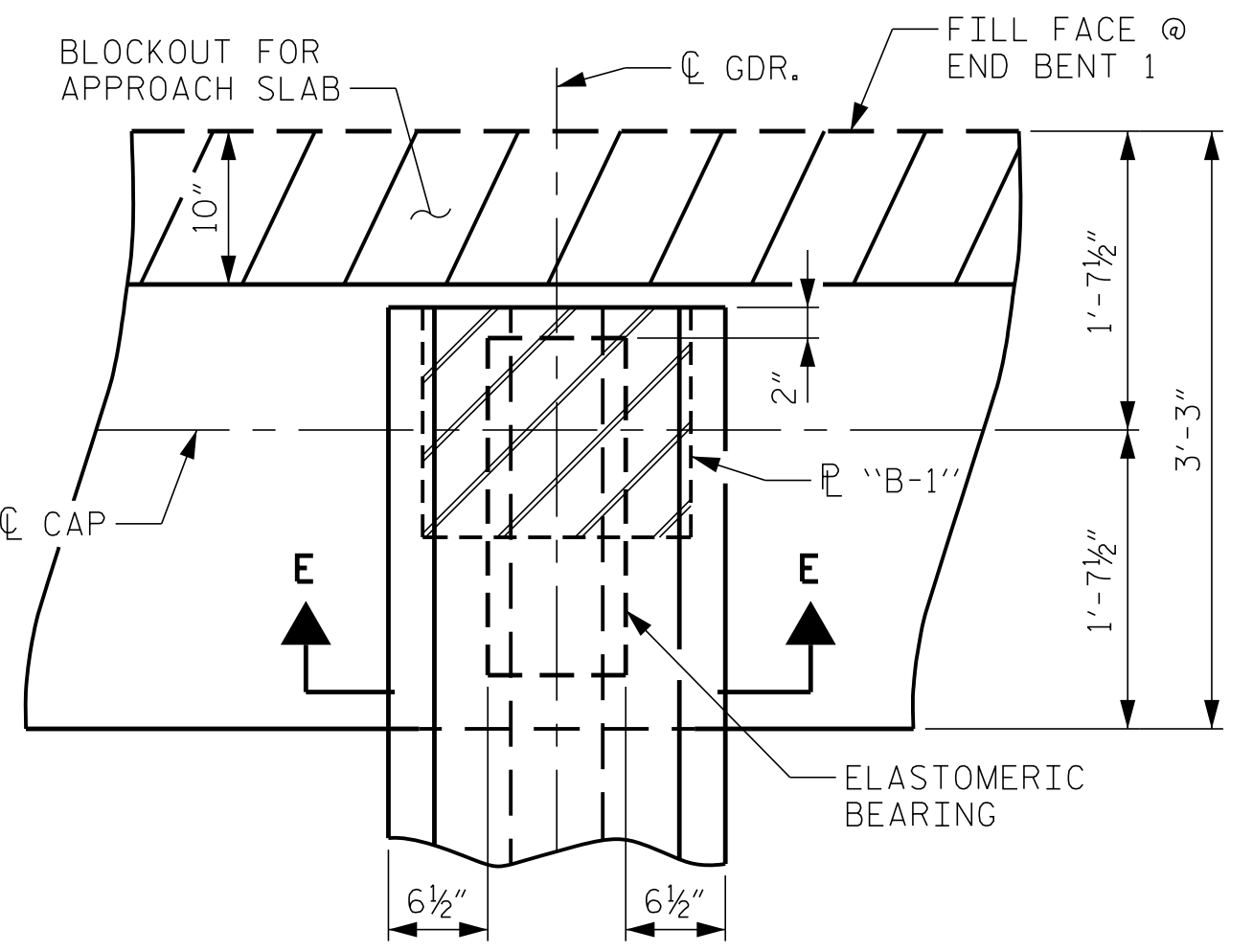
| MAXIMUM ALLOWABLE SERVICE LOADS |       |
|---------------------------------|-------|
| D.L.+L.L. (NO IMPACT)           |       |
| TYPE IV                         | 225 k |



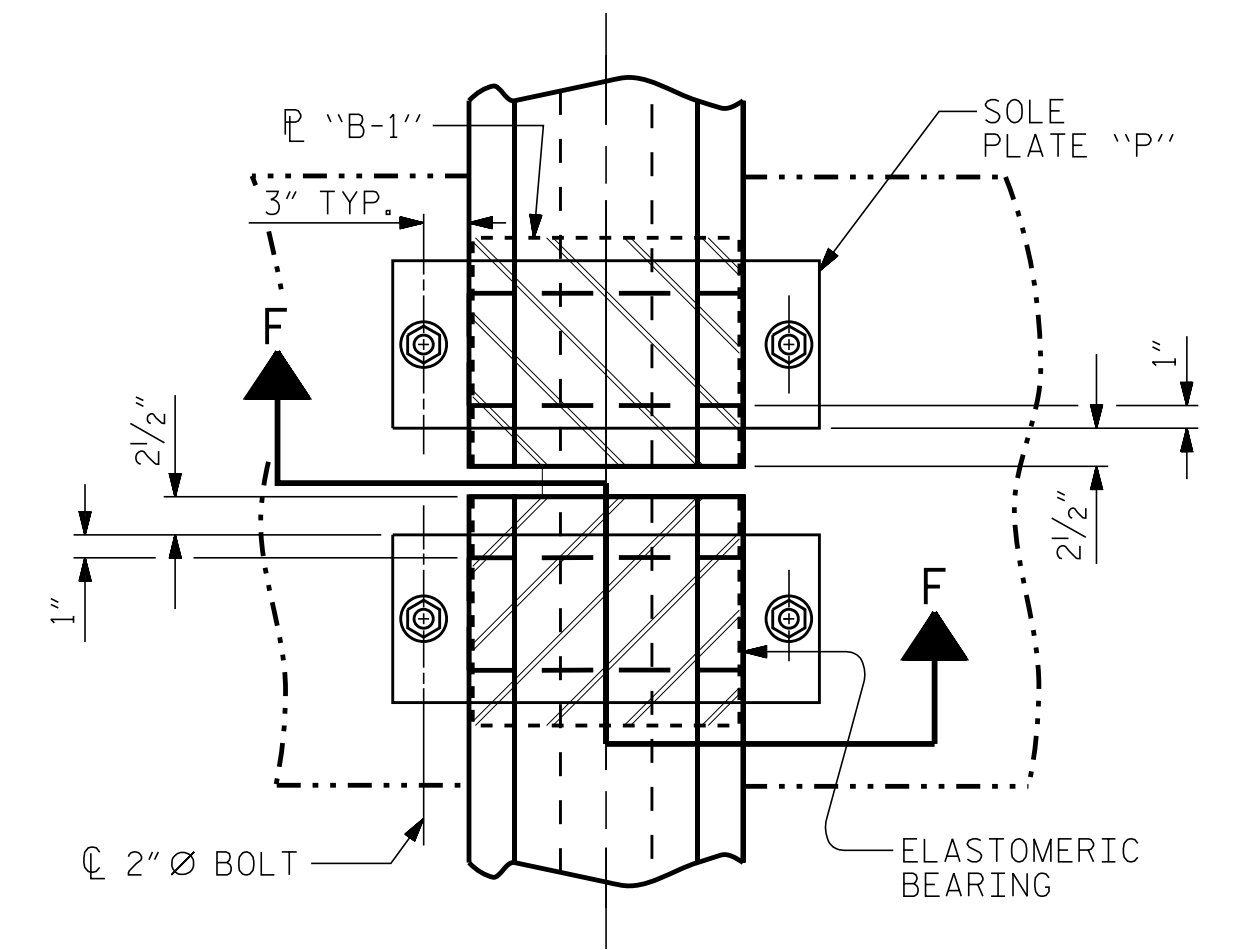
TYPICAL SECTION OF ELASTOMERIC BEARINGS



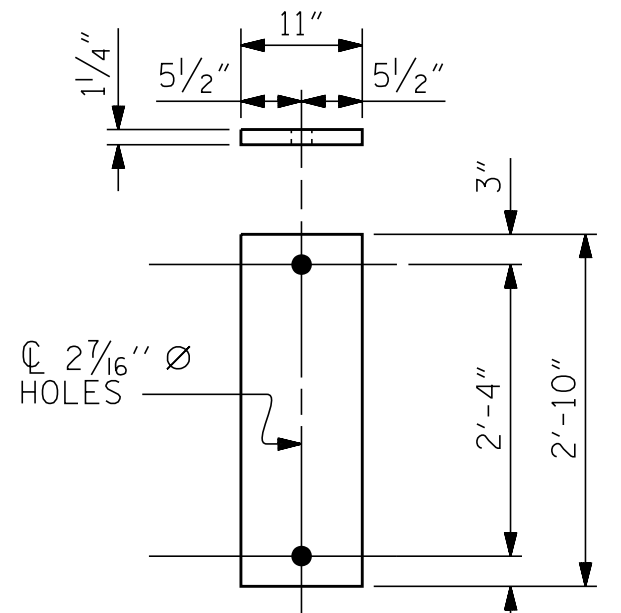
E3 (32 REQ'D)  
PLAN VIEW OF ELASTOMERIC BEARING  
TYPE IV



TYPICAL PLAN  
(SHOWING INTEGRAL END BENT)  
(END BENT 1 SHOWN, END BENT 2 SIMILAR)

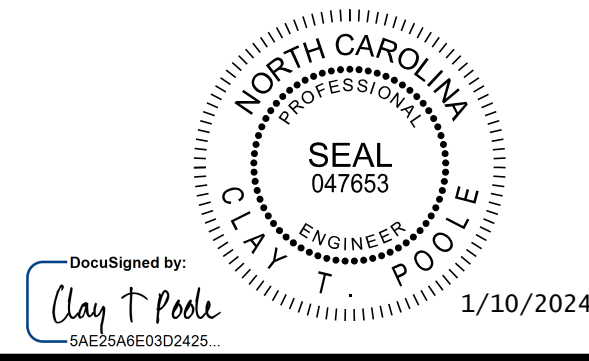


TYPICAL PLAN  
(SHOWING INTERIOR BENT)



SOLE PLATE DETAILS ("P")

PROJECT NO. B-5156  
PENDER COUNTY  
 STATION: 22+90.50 -L-



**Kimley»Horn**  
 421 Fayetteville Street, Suite 600  
 Raleigh, NC 27601-1772  
 Phone (919) 677-2000 NC LICENSE # F-0102

STATE OF NORTH CAROLINA  
 DEPARTMENT OF TRANSPORTATION  
 RALEIGH  
 STANDARD  
**ELASTOMERIC BEARING DETAILS**  
 PRESTRESSED CONCRETE GIRDER SUPERSTRUCTURE

| REVISIONS |     |       |     |     |       | SHEET NO.    |
|-----------|-----|-------|-----|-----|-------|--------------|
| NO.       | BY: | DATE: | NO. | BY: | DATE: | S-24         |
| 1         |     |       | 3   |     |       | TOTAL SHEETS |
| 2         |     |       | 4   |     |       | 45           |

**DOCUMENT NOT CONSIDERED FINAL UNLESS ALL SIGNATURES COMPLETED**

This document, together with the concepts and designs presented herein, is an instrument of service. It is intended only for the specific purpose and area for which it was prepared. It is not to be used for any other purpose without the written authorization and approval of Kimley-Horn and Associates, Inc. It shall be without liability to Kimley-Horn and Associates, Inc. Copyright Kimley-Horn and Associates, Inc., 2024.

1/10/2024 K:\BIDI\_Structures\Bridge\NC\01036491 - B-5156\Coord\09\B5156\_SML.B61\_700028.dgn

|                             |                    |
|-----------------------------|--------------------|
| ASSEMBLED BY : D. D. LOWERY | DATE : 03/2023     |
| CHECKED BY : C. T. POOLE    | DATE : 03/2023     |
| DRAWN BY : WJH 8/89         | REV. 1/15 MAA/TMG  |
| CHECKED BY : CRK 8/89       | REV. 12/17 MAA/THC |
|                             | REV. 10/21 BNB/AAI |