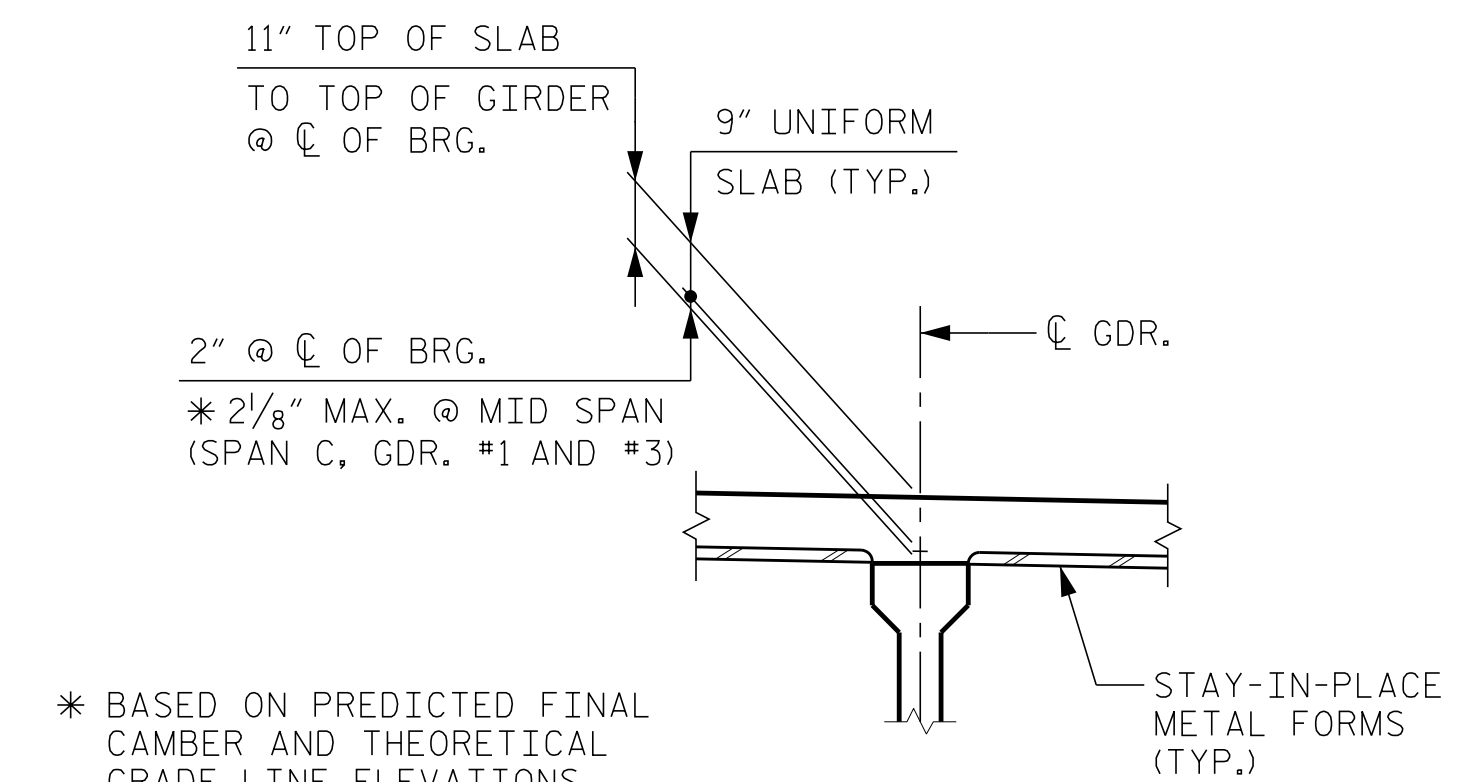


NOTES

PROVIDE 1/4" HIGH BEAM BOLSTERS UPPER AT 4'-0" CTS. ATOP THE METAL STAY-IN-PLACE FORMS TO SUPPORT THE BOTTOM MAT OF "A" BARS. WHEN USING REMOVABLE FORMS, PROVIDE CONTINUOUS HIGH CHAIRS FOR METAL DECK (C.H.C.M.) @ 4'-0" CTS. WITH A HEIGHT TO SUPPORT THE BOTTOM MAT OF "A" BARS A CLEAR DISTANCE OF 2 1/2" ABOVE THE TOP OF THE REMOVABLE FORM.

LONGITUDINAL STEEL MAY BE SHIFTED SLIGHTLY, AS NECESSARY, TO AVOID INTERFERENCE WITH STIRRUPS IN PRESTRESSED CONCRETE GIRDERS.

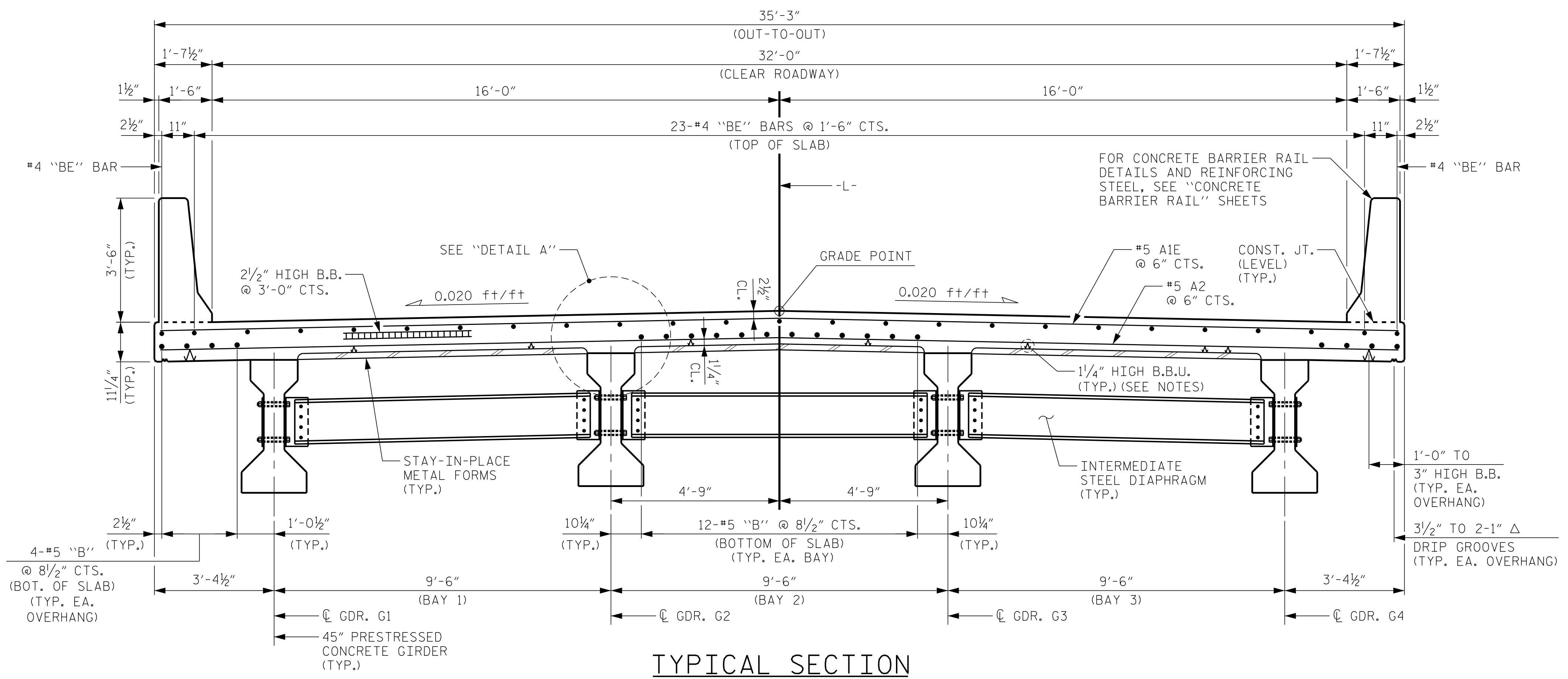
PREVIOUSLY CAST CONCRETE IN A CONTINUOUS UNIT SHALL HAVE ATTAINED A MINIMUM COMPRESSIVE STRENGTH OF 3,000 PSI BEFORE ADDITIONAL CONCRETE IS CAST IN THE UNIT.



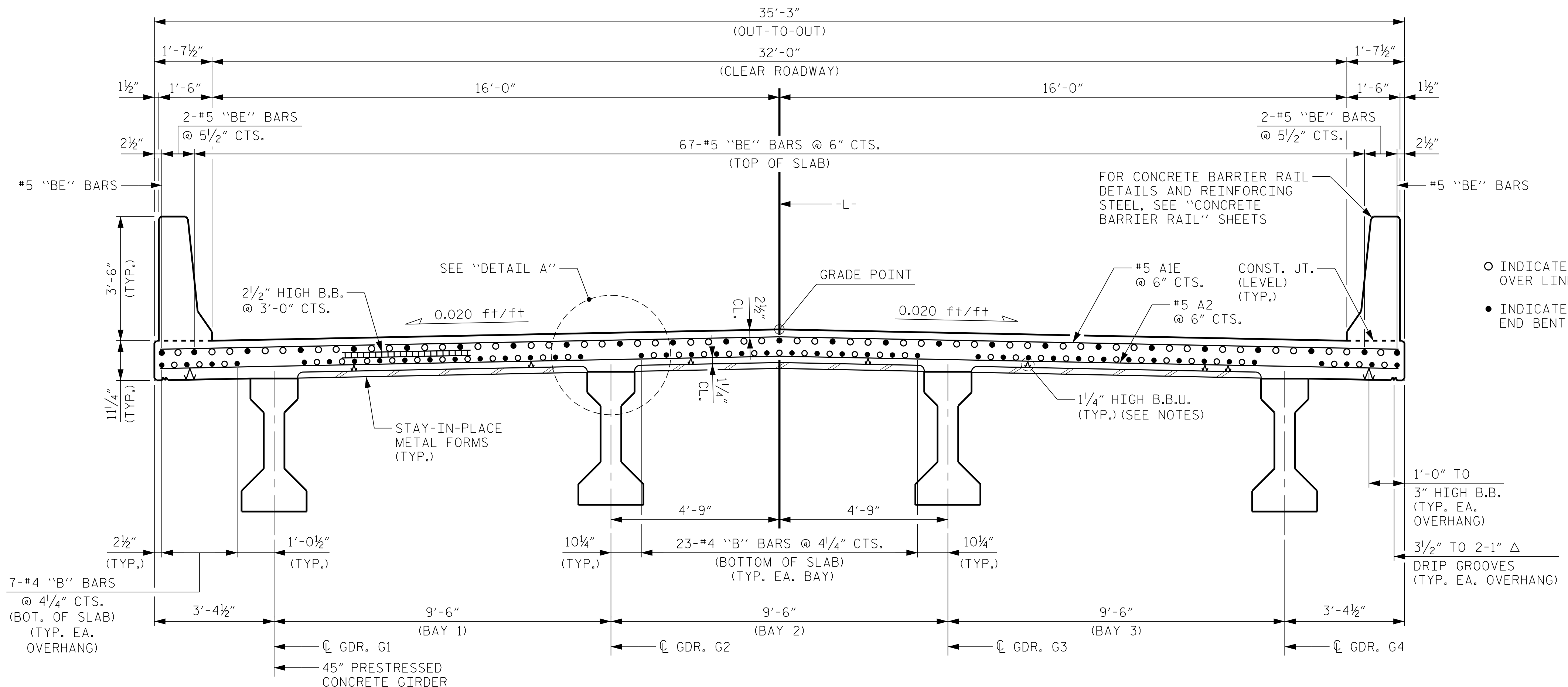
\* BASED ON PREDICTED FINAL CAMBER AND THEORETICAL GRADE LINE ELEVATIONS.

DETAIL "A"  
(TYP. EA. GDR. @ EA. BENT)

- INDICATES NON-CONTINUOUS REINFORCING STEEL OVER LINK SLAB.
- INDICATES CONTINUOUS REINFORCING STEEL FROM END BENT 1 TO END BENT 2.



TYPICAL SECTION  
(SHOWING INTERMEDIATE DIAPHRAGM)

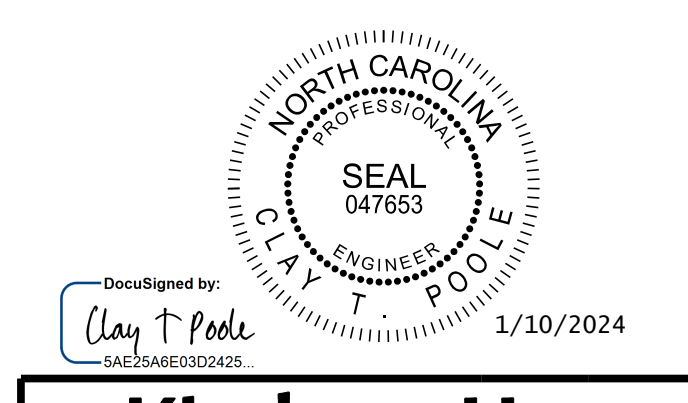


TYPICAL SECTION  
(SHOWING LINK SLAB)

PROJECT NO. B-5156  
PENDER COUNTY  
STATION: 22+90.50 -L-

SHEET 1 OF 3

STATE OF NORTH CAROLINA  
DEPARTMENT OF TRANSPORTATION  
RALEIGH  
SUPERSTRUCTURE  
TYPICAL SECTION



**Kimley»Horn**  
421 Fayetteville Street, Suite 600  
Raleigh, NC 27601-1772  
Phone (919) 677-2000  
NC LICENSE # F-0102

REVISIONS						SHEET NO.
NO.	BY:	DATE:	NO.	BY:	DATE:	S-6
1			3			TOTAL SHEETS
2			4			45

**DOCUMENT NOT CONSIDERED FINAL  
UNLESS ALL SIGNATURES COMPLETED**

K:\B01-Structures\Bridges\NA\01036491 - B-5156\Coord\09\B5156\_SML\_IS1\_700028.dgn

DRAWN BY: D. D. LOWERY DATE: 03/2023  
CHECKED BY: A. L. PHILLIPS DATE: 03/2023  
DESIGN ENGINEER OF RECORD: C. T. POOLE DATE: 03/2023