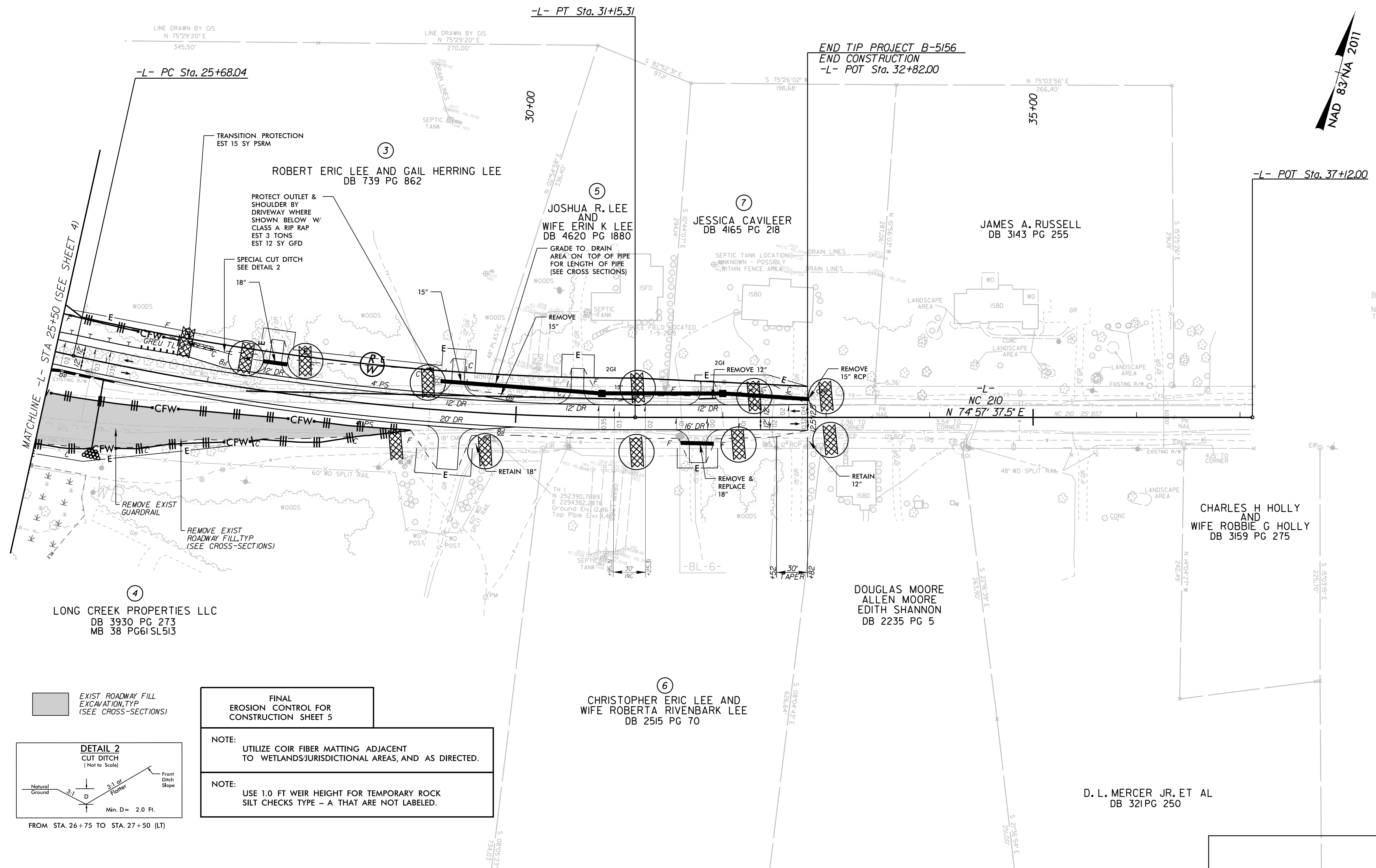
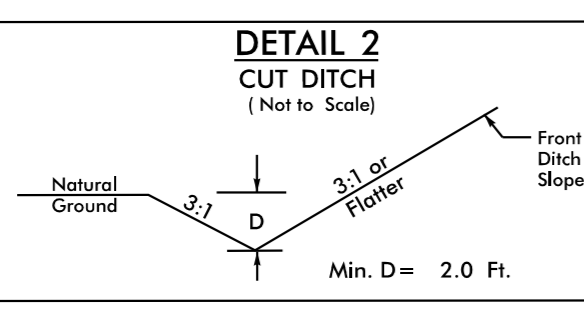


PROJECT REFERENCE NO.	SHEET NO.
B-5156	EC-7/CONST.5
R/W SHEET NO.	
ROADWAY DESIGN ENGINEER	HYDRAULICS ENGINEER

-L-
 PI Sta 28+42.77
 $\Delta = 12' 32" 32.8" (LT)$
 $D = 2' 17" 30.6"$
 $L = 547.27'$
 $T = 274.73'$
 $R = 2,500.00'$
 $SE = 0.035$
 $RO = 105'$



EXIST ROADWAY FILL EXCAVATION, TYP (SEE CROSS-SECTIONS)

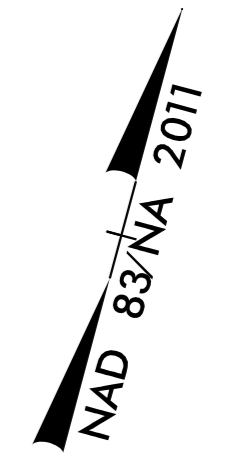


FROM STA. 26+75 TO STA. 27+50 (LT)

FINAL EROSION CONTROL FOR CONSTRUCTION SHEET 5

NOTE: UTILIZE COIR FIBER MATTING ADJACENT TO WETLANDS/JURISDICTIONAL AREAS, AND AS DIRECTED.

NOTE: USE 1.0 FT WEIR HEIGHT FOR TEMPORARY ROCK SILT CHECKS TYPE - A THAT ARE NOT LABELED.



BM2 ELEVATION= 23.72'
 L STA 37+12.00
 N 53°07'23.5\"/>

REVISIONS

5/14/99

1/10/2024