

Location and Surveys

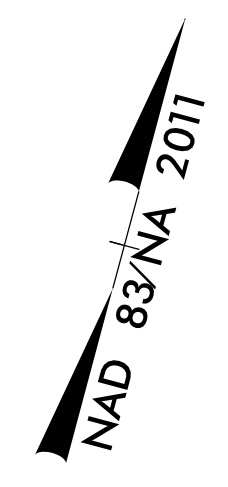
LOCATION AND SURVEYS UNIT
DIVISION 3
5310 BARBADOS BLVD, SUITE 102
CASTLE HAYNE, NORTH CAROLINA 28429

PROJECT SURVEYOR

SEAL
L-4526
CHRISTOPHER J. SAWYER

DOCUMENT NOT CONSIDERED FINAL
UNLESS ALL SIGNATURES COMPLETED

-L-
 PI Sta 28+42.77
 Δ = 12' 32" 32.8" (LT)
 D = 2' 17" 30.6"
 L = 547.27'
 T = 274.73'
 R = 2,500.00'
 SE = 0.035
 RO = 105'

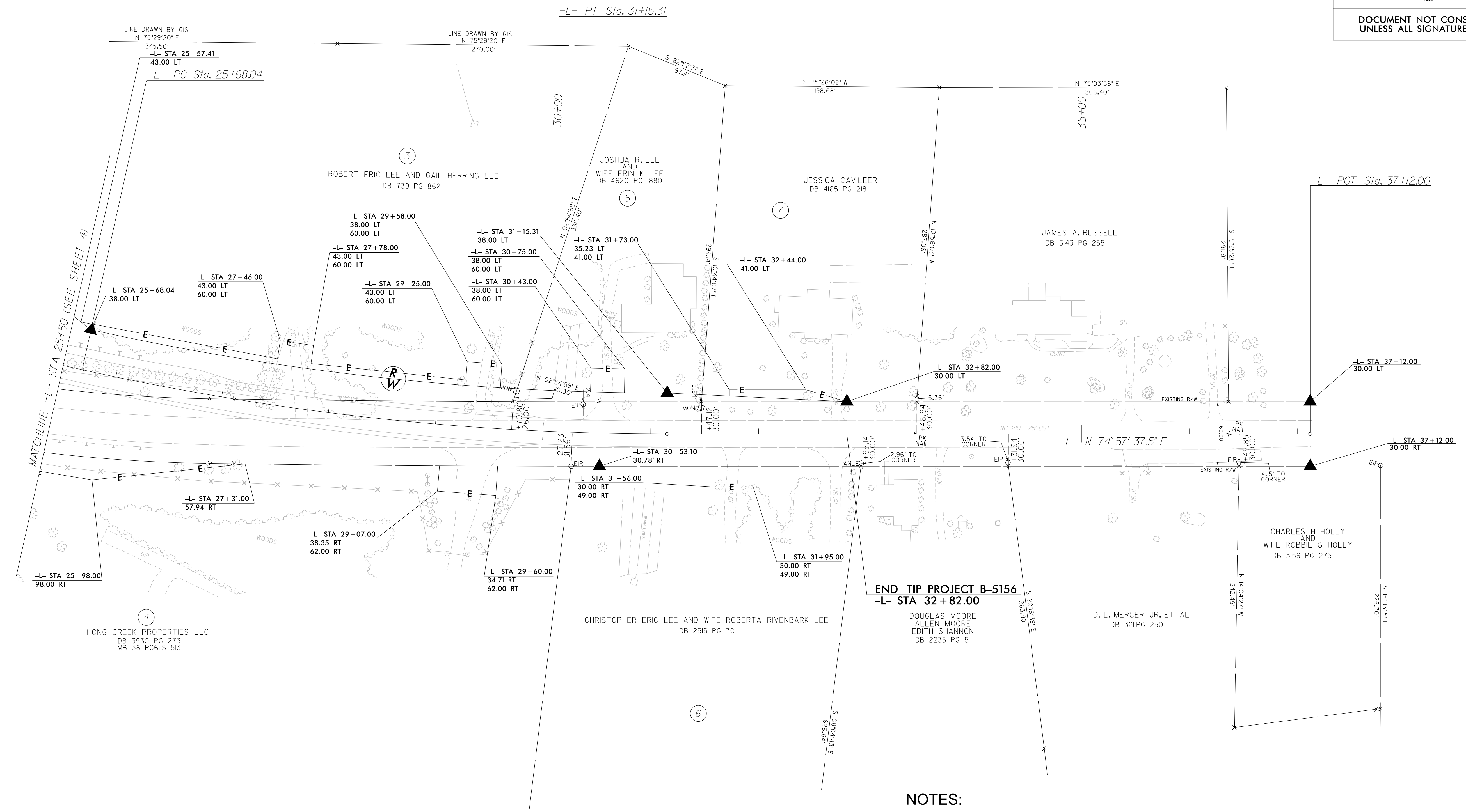


I, Christopher J. Sawyer, PLS, certify that the right of way and permanent easement monumentation for this project shown herein was completed under my direct and responsible charge from an actual survey made under my supervision; that all horizontal closures had a minimum ratio of precision of 1:10,000 (Class A). Field work was performed September 15 and December 5, 2022, and all coordinates are based on NAD83/2011; That this survey was performed to meet the requirements of 21NCAC 56.1600 as applicable.

This 9th day of June, 2023.

DocuSigned by:
 Christopher Sawyer
 Professional Land Surveyor L-4526

REVISIONS



END TIP PROJECT B-5156
 -L- STA 32+82.00

NOTES:

1. IF FURTHER INFORMATION REGARDING PROJECT CONTROL IS NEEDED PLEASE CONTACT THE LOCATION AND SURVEYS UNIT.
2. PROJECT CONTROL WAS ESTABLISHED USING GNSS, THE GLOBAL NAVIGATION SATELLITE SYSTEM.
3. RIGHT OF WAY MONUMENTATION ESTABLISHED SEPTEMBER 15 AND DECEMBER 5, 2022.

Q:\JUN-2023\1700...
 S:\Units\ATLS\287721...
 m\duval

Q:\JUN-2023\1700... series sheets\B5156.L\LongCreek Working\150 series sheets\B5156.Ls_rw05.dgn