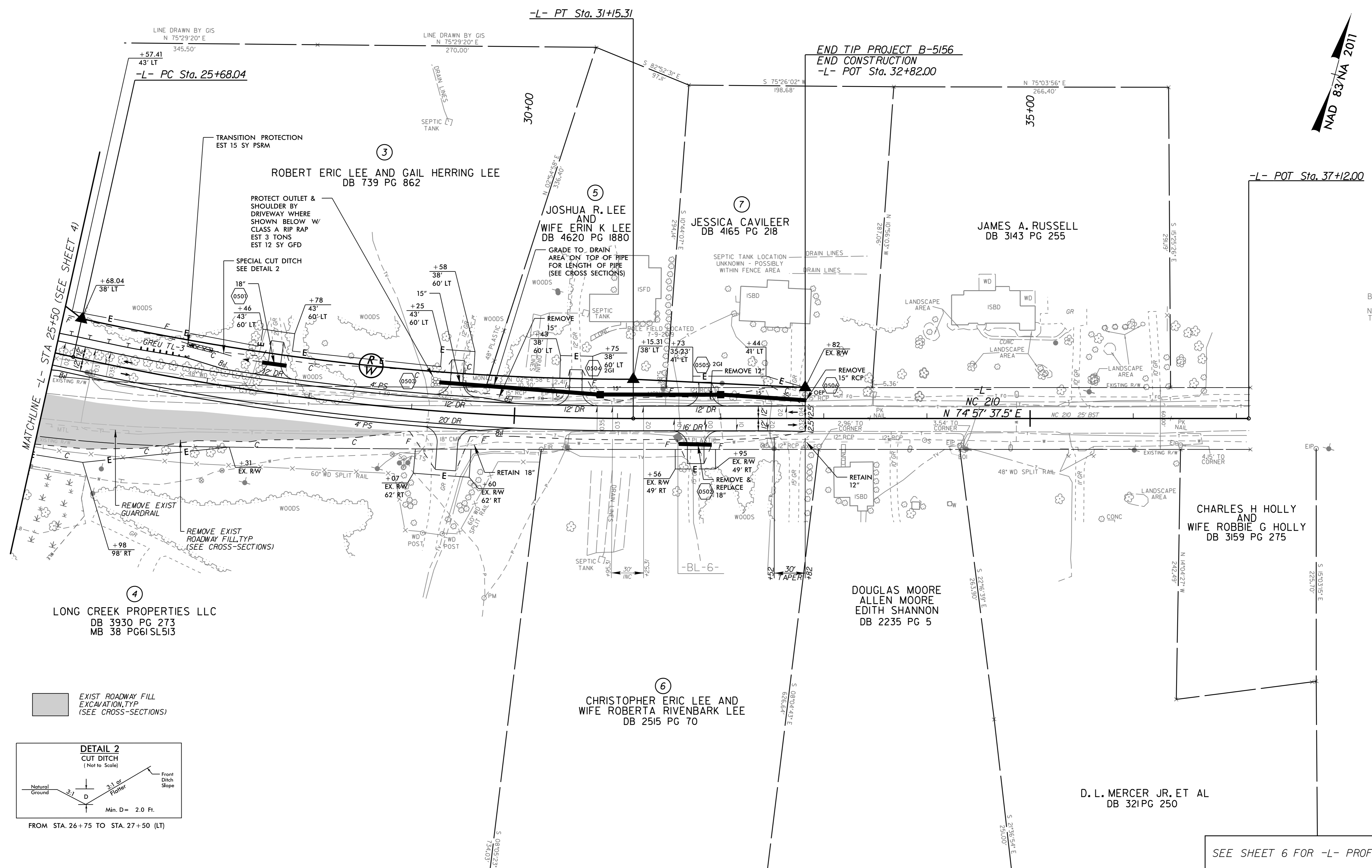
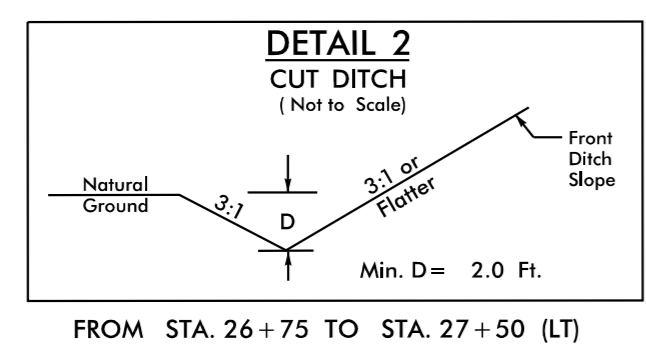


PROJECT REFERENCE NO. B-5156	SHEET NO. 5
RW SHEET NO.	
ROADWAY DESIGN ENGINEER	HYDRAULICS ENGINEER
DOCUMENT NOT CONSIDERED FINAL UNLESS ALL SIGNATURES COMPLETED	

-L-
 PI Sta 28+42.77
 $\Delta = 12' 32' 32.8''$ (LT)
 $D = 2' 17' 30.6''$
 $L = 547.27'$
 $T = 274.73'$
 $R = 2,500.00'$
 $SE = 0.035$
 $RO = 105'$



EXIST ROADWAY FILL
 EXCAVATION, TYP
 (SEE CROSS-SECTIONS)



FROM STA. 26+75 TO STA. 27+50 (LT)

REVISIONS

5/14/99

3/7/2024

SEE SHEET 6 FOR -L- PROFILE