

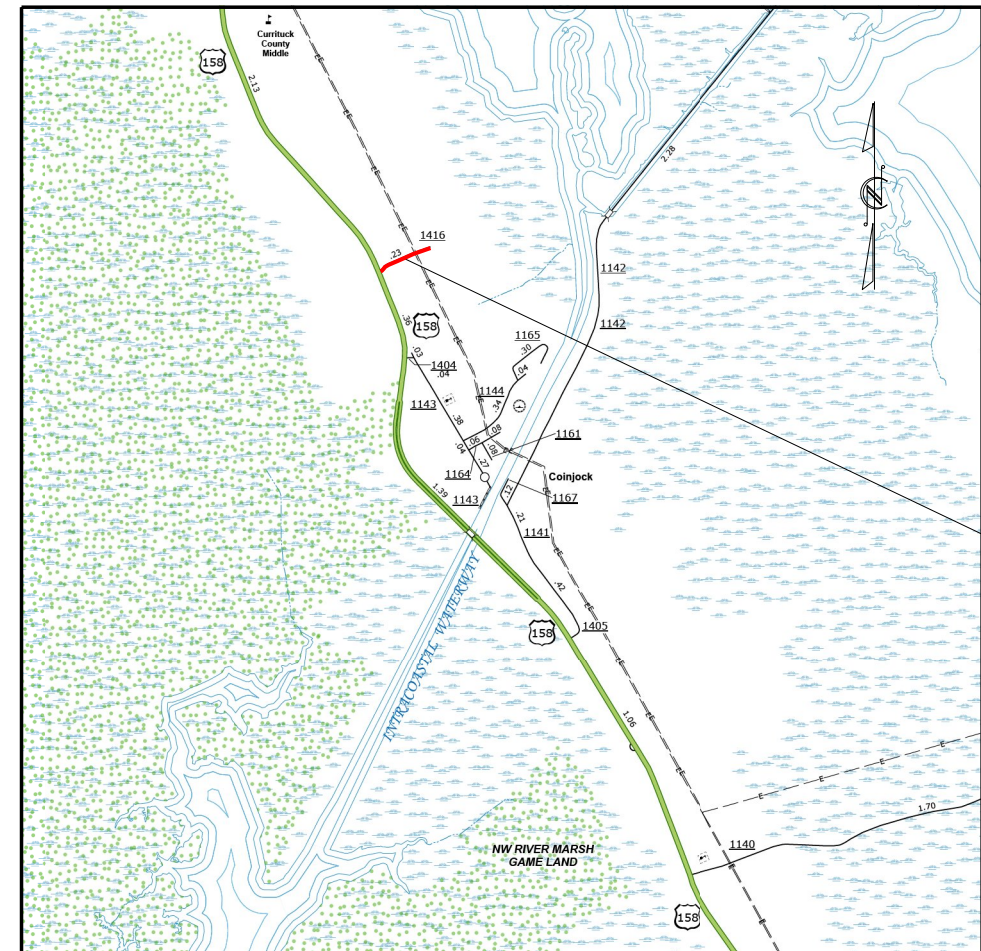
STATE	STATE PROJECT REFERENCE NO.	SHEET NO.
N.C.	2024CPT.01.06.10271, ETC.	5
STATE PROJ. NO.	F.A. PROJ. NO.	DESCRIPTION
2024CPT.01.06.20271		PE, CONST

STATE OF NORTH CAROLINA
DIVISION OF HIGHWAYS

CURRITUCK COUNTY

LOCATION: MAP 11 - SR 1416 FROM US 158 TO DEAD END

TYPE OF WORK: RESURFACING & SHOULDER RECONSTRUCTION



MAP 11

REV 01/11/24
D.H. STALLINGS

WBS NO.: 2024CPT.01.06.10271, ETC.

CONTRACT: C204932

\$\$\$\$\$SYTIME\$\$\$\$\$
\$\$\$\$\$DGN\$\$\$\$\$
\$\$\$\$\$USERNAME\$\$\$\$\$

GRAPHIC SCALES

NTS

MAP LENGTH

MAP 11 = 0.23 MILES

Prepared in the Office of:
DIVISION 1
DIVISION OF HIGHWAYS
113 AIRPORT DR., EDENTON NC, 27932

2024 STANDARD SPECIFICATIONS

B. N. BRASWELL, PE
DIVISION PROJECT DEVELOPMENT ENGINEER

CHRIS SLACHTA
DIVISION CONTRACT ENGINEER

D. H. STALLINGS
DIVISION DESIGN ENGINEER

