

STATE	STATE PROJECT REFERENCE NO.	SHEET NO.
N.C.	2024CPT.01.06.10271, ETC.	4
STATE PROJ. NO.	F.A. PROJ. NO.	DESCRIPTION
2024CPT.01.06.20271		PE, CONST
2024CPT.01.06.20272		PE, CONST

STATE OF NORTH CAROLINA  
DIVISION OF HIGHWAYS

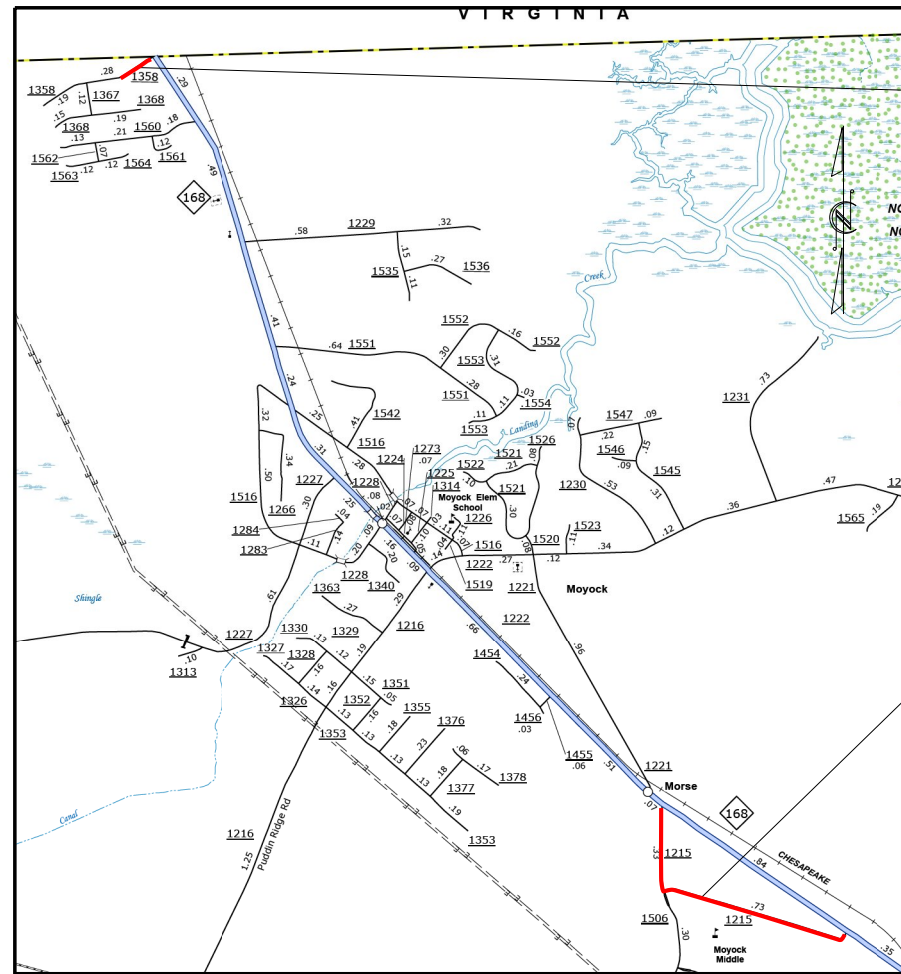
**CURRITUCK COUNTY**

**LOCATION:** MAP 8 - SR 1215 FROM NC 168 TO NC 168  
 MAP 9 - SR 1293 FROM SR 1222 TO CUL-DE-SAC  
 MAP 10 - SR 1358 FROM NC 168 TO BEGIN 3 LANE  
 MAP 12 - SR 1238 FROM SR 1222 TO DEAD END

MAP 13 - SR 1343 FROM NC 168 TO SR 1344  
 MAP 14 - SR 1344 FROM SR 1343 TO CUL-DE-SAC  
 MAP 15 - SR 1345 FROM SR 1343 TO SR 1344  
 MAP 16 - SR 1398 FROM SR 1345 TO CUL-DE-SAC

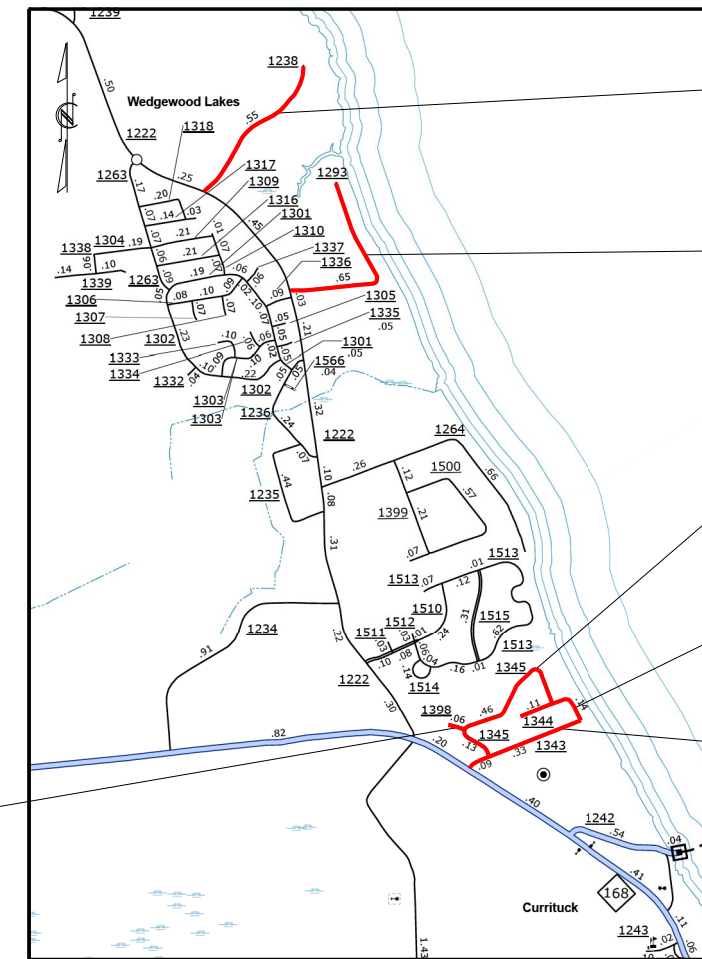
**TYPE OF WORK:** RESURFACING, THIN LIFT RESURFACING, SHOULDER RECONSTRUCTION, & LONG-LIFE PAVEMENT MARKINGS

WBS NO.: 2024CPT.01.06.10271, ETC.  
 CONTRACT: C204932



MAP 10

MAP 8



MAP 12

MAP 9

MAP 15

MAP 14

MAP 13

MAP 16

REV 01/11/24  
D.H. STALLINGS

GRAPHIC SCALES

NTS

MAP LENGTH

- MAP 8 = 1.05 MILES
- MAP 9 = 0.65 MILES
- MAP 10 = 0.11 MILES
- MAP 12 = 0.55 MILES
- MAP 13 = 0.42 MILES
- MAP 14 = 0.25 MILES
- MAP 15 = 0.59 MILES
- MAP 16 = 0.06 MILES

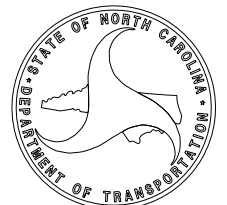
Prepared in the Office of:  
**DIVISION 1**  
**DIVISION OF HIGHWAYS**  
113 AIRPORT DR., EDENTON NC, 27932

2024 STANDARD SPECIFICATIONS

**B. N. BRASWELL, PE**  
DIVISION PROJECT DEVELOPMENT ENGINEER

**CHRIS SLACHTA**  
DIVISION CONTRACT ENGINEER

**D. H. STALLINGS**  
DIVISION DESIGN ENGINEER



\$\$\$\$\$SYTIME\$\$\$\$\$  
 \$\$\$SY\$\$\$\$\$DGN\$\$\$\$\$  
 \$\$\$USERNAME\$\$\$\$\$