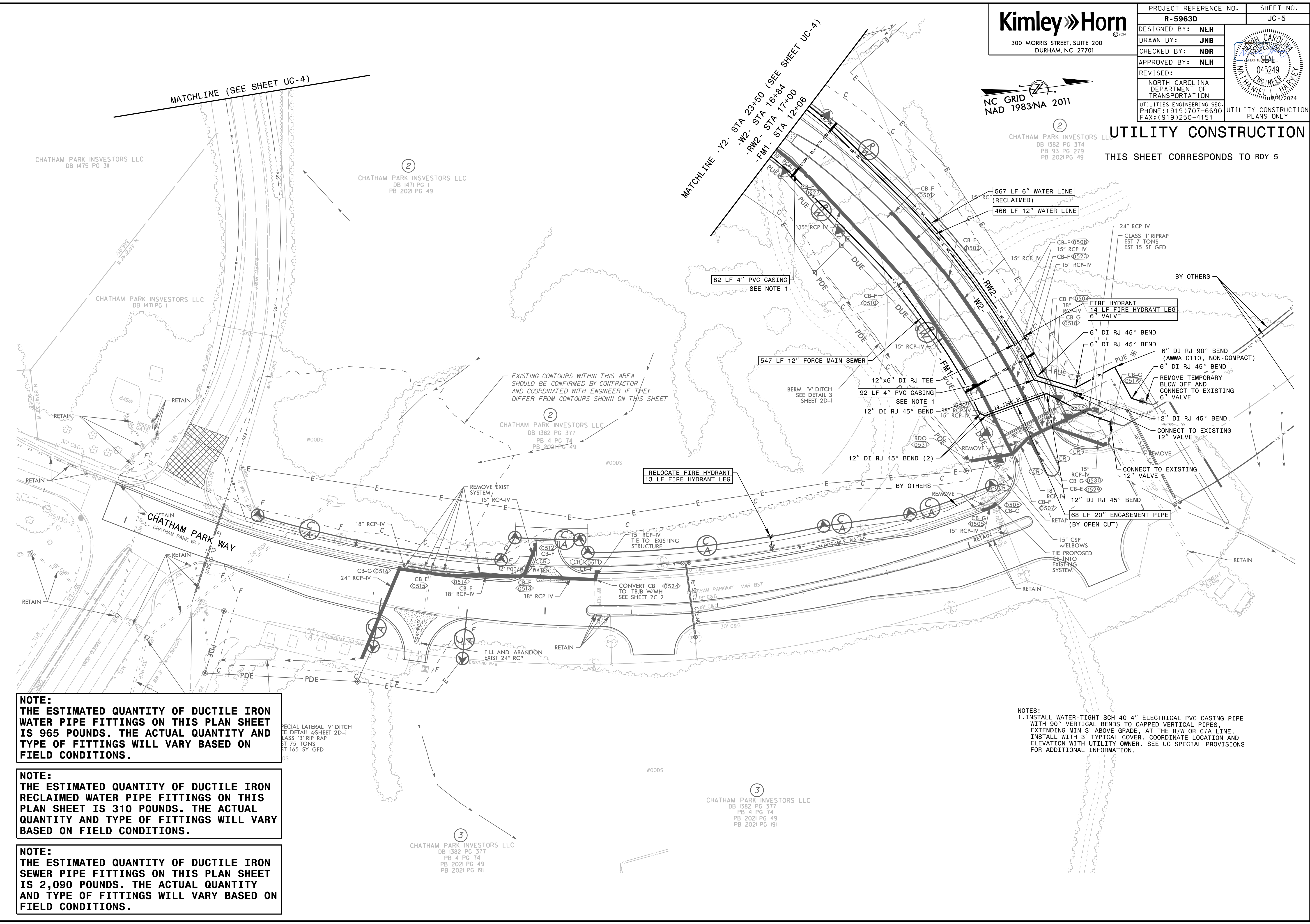


PROJECT REFERENCE NO.	SHEET NO.
R-5963D	UC-5
DESIGNED BY: NLH	
DRAWN BY: JNB	
CHECKED BY: NDR	
APPROVED BY: NLH	
REVISED:	
NORTH CAROLINA DEPARTMENT OF TRANSPORTATION UTILITIES ENGINEERING SEC. PHONE: (919) 707-6690 FAX: (919) 250-4151	
UTILITY CONSTRUCTION PLANS ONLY	



UTILITY CONSTRUCTION

THIS SHEET CORRESPONDS TO RDY-5



NOTE:
 THE ESTIMATED QUANTITY OF DUCTILE IRON WATER PIPE FITTINGS ON THIS PLAN SHEET IS 965 POUNDS. THE ACTUAL QUANTITY AND TYPE OF FITTINGS WILL VARY BASED ON FIELD CONDITIONS.

NOTE:
 THE ESTIMATED QUANTITY OF DUCTILE IRON RECLAIMED WATER PIPE FITTINGS ON THIS PLAN SHEET IS 310 POUNDS. THE ACTUAL QUANTITY AND TYPE OF FITTINGS WILL VARY BASED ON FIELD CONDITIONS.

NOTE:
 THE ESTIMATED QUANTITY OF DUCTILE IRON SEWER PIPE FITTINGS ON THIS PLAN SHEET IS 2,090 POUNDS. THE ACTUAL QUANTITY AND TYPE OF FITTINGS WILL VARY BASED ON FIELD CONDITIONS.

NOTES:
 1. INSTALL WATER-TIGHT SCH-40 4" ELECTRICAL PVC CASING PIPE WITH 90° VERTICAL BENDS TO CAPPED VERTICAL PIPES, EXTENDING MIN 3' ABOVE GRADE, AT THE R/W OR C/A LINE. INSTALL WITH 3" TYPICAL COVER. COORDINATE LOCATION AND ELEVATION WITH UTILITY OWNER. SEE UC SPECIAL PROVISIONS FOR ADDITIONAL INFORMATION.

SPECIAL LATERAL 'V' DITCH
 SEE DETAIL 4 SHEET 2D-1
 CLASS 'B' RIP RAP
 EST 75 TONS
 EST 165 SY GFD